

Installation of quick connectors for construction site electrical distribution boxes





Installation of quick connectors for construction site electrical distr



Cable Junction Boxes: 8 Types, Tech Specs & Installation

By: Thor, Senior Electrical Engineer at Weisho Electric Co., Ltd. Thor specializes in R&D and overseas technical support for high

[Contact Us](#)

Temporary Site Services - Wingate Electrical Plc

All of our electrical installations are installed in accordance with the Electricity at Work Regulations and BS7671.

[Contact Us](#)



Essential Guidelines for Safe Temporary Electrical

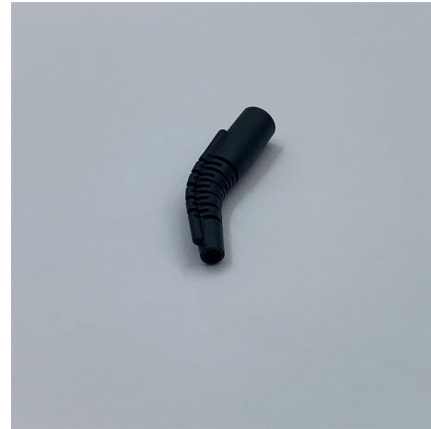
This article aims to provide a comprehensive overview of the essential guidelines for safe temporary electrical installations on construction sites, focusing on Best

[Contact Us](#)



Quality Control for Installation and Construction of Electrical Riser

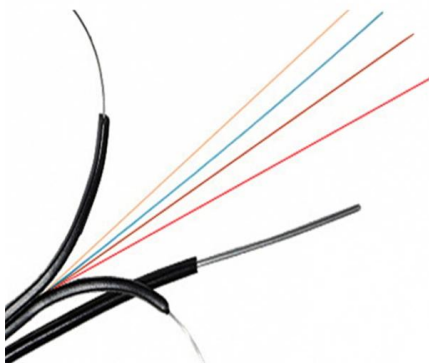
Master the key quality control methods for electrical riser & distribution box installation. Ensure safety, compliance, and prevent hazards in building electrical systems.



How to Install a Cable Distribution Box Safely and

In modern electrical systems, cable distribution boxes (also known as electrical distribution boxes or distribution boxes) play a crucial role as the key

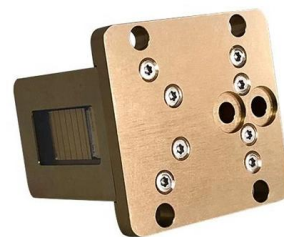
[Contact Us](#)



Construction site electrical enclosure

Find your construction site electrical enclosure easily amongst the 25 products from the leading brands (HLC, WALTHER WERKE, DIGITAL ELECTRIC,) on

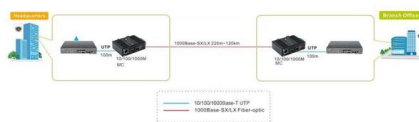
[Contact Us](#)



Temporary electrical wiring for construction sites

All 120-volt, single-phase, 15- and 20-ampere receptacles shall be of the grounding type and their contacts shall be grounded by connection to the equipment grounding conductor of the circuit

[Contact Us](#)





Which Connectors Are Used in Temporary Power Distribution Boxes?

What Makes Temporary Power Different from Permanent Power? Permanent electrical installations live in controlled environments. Temporary power lives in reality. Construction sites

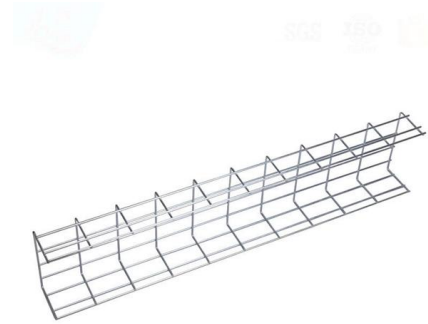
[Contact Us](#)



Requirements And Specifications For Installation Of

In flammable and explosive environments, explosion-proof distribution boxes should be selected and explosion-proof treatment should be carried out.

[Contact Us](#)



Temporary Construction Power Box Guide: Portable Distribution

Learn how temporary power boxes work on construction sites. Discover how E-abel portable distribution cabinets and IP67 waterproof connectors ensure safe and reliable job site

[Contact Us](#)



Temporary Power Construction Site Guide: Industrial Plug Sockets,

Discover how to supply temporary power safely on construction sites using E-abel distribution boxes, industrial plug sockets, and IP67 connectors for reliable outdoor electricity.

[Contact Us](#)



Summary of key points for construction and installation of distribution

The construction and installation points of distribution boxes and switch boxes are summarized as follows: 1. Select qualified products that meet national standards and safety requirements.

[Contact Us](#)



Electrical installation handbook

The scope of this electrical installation handbook is to provide the designer and user of electrical plants with a quick reference, immediate-use working tool.

[Contact Us](#)

Junction Box Installation: A Step-by-Step Guide for Safe

Junction boxes are essential components in electrical systems, serving as safe enclosures for electrical connections.

[Contact Us](#)



Site Boxes in stock at One Elec: express delivery

A site box is an electrical device used on temporary sites such as construction sites, market stalls, campsites and trade fairs. It provides temporary electrical distribution before the electrical panel is

[Contact Us](#)



Best Practices for Installing Temporary Electrical Systems on

Learn how to set up and maintain reliable temporary electrical systems for construction projects.

[Contact Us](#)



How to Install a Distribution Box--A Comprehensive

Whether you are an electrical contractor or a construction brigade, knowing how to properly and safely install distribution boxes is the basis of

[Contact Us](#)



Electric Panel Installation Method Statement

This document provides a method statement for installing and terminating electric panels and distribution boxes. It outlines 4 steps: 1) Pre-installation preparation

[Contact Us](#)



The installation requirements for the distribution box

A distribution box is the heart of any electrical system. It takes the incoming power and safely distributes it to different circuits throughout your

[Contact Us](#)

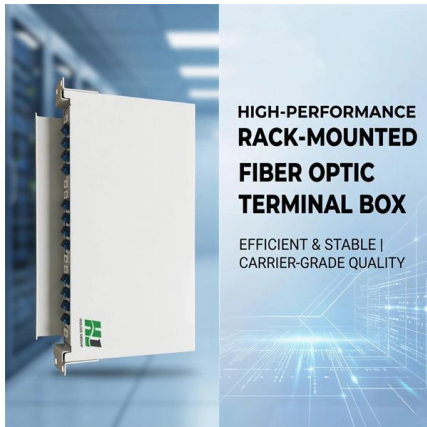




Temporary electrical wiring for construction sites

Temporary for construction Construction work requires electrical power for many purposes. However, exposure to weather, frequent relocation, rough use and other conditions not normally encountered

[Contact Us](#)



Key Points Of Installation And Collocation Of Distribution Box In

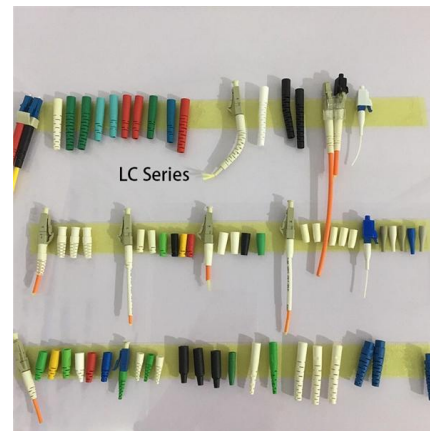
1. The power distribution system at the construction site shall be distributed in different levels. The main distribution box (or distribution room) shall be set up. The distribution box shall be set

[Contact Us](#)

ENERGYBOX Assemblies for Construction Sites (ACS)

ENERGYBOX is a complete range of Assemblies for Construction Sites (ACS) pre-wired boards that can be wall-mounted or installed on a support. The panels are

[Contact Us](#)



Construction Site Electrical Panel Setup , Distribution Board Wiring

In this video we are showing a complete Construction Site Electrical Distribution Panel setup. This includes MCCB, MCB, DB boxes, cable management, earthing and load distribution for machines.

[Contact Us](#)



Distribution Box Installation: A Complete Guide to Safe

In this comprehensive guide, we'll cover everything you need to know about distribution box installation, from the basics to the step-by-step installation

[Contact Us](#)



WALTHER-WERKE: Construction site power distributors

The portfolio includes matching standard products for various specific applications, such as containers, lighting and cranes. For connection distributors, suitable solutions are available ex stock for rapid

[Contact Us](#)

Step-by-Step Guide to Install MCB Distribution Box

Learn how to safely install an MCB distribution box with this comprehensive guide. Step-by-step instructions to ensure correct installation.

[Contact Us](#)



Method Statement for Installation of Electrical Conduit

Ensure the connect conduit terminating in switchgear, fuse boards, trunking adaptable boxes or other non-spouted enclosures etc., with smooth bore

[Contact Us](#)

IS 1255 (1983): Code of practice for



installation and maintenance of

IS 1255 (1983): Code of practice for installation and maintenance of power cables up to and including 33 kV rating [ETD 9: Power Cables]

[Contact Us](#)



Contact Us

For datasheets, pricing, or custom fiber access solutions, please visit:
<https://frindel.es>