

Installation of cable trays in small bridges





Overview

The Cable Tray Institute is making available the current edition of this practical guide for the proper installation of aluminum or steel cable tray systems. These guidelines will be useful to engineers, contractors, and maintenance personnel. maintain spacing or to keep cables in place when the tray is ect the minimum bend ra-dius for cables as they exit the bottom of the cable tray. A rung spacing of 6 to 9 inches (150 to 230 mm) is preferable when the cable tray cont d for instrumentation and control applications that require. Cable tray (or cable ladder) systems are a popular alternative to electrical conduit systems, as they have an outstanding record for dependable service, design flexibility and cost savings in commercial and industrial applications.



Installation of cable trays in small bridges



B-Line series Cable Tray Design Considerations

Design recommendations for ladder cable tray
When supporting small diameter multi-conductor control and instrumentation cables, 6, 9, or 12-inch rung spacings should be specified.
Quality Type TC,

[Contact Us](#)

Cable Tray Installation Procedure Guide

It describes inspecting and storing cable trays upon receipt, installing trays flat or vertically, fixing trays to structures, designing trays to carry loads, providing

[Contact Us](#)



Cable Tray Institute

The Cable Tray Institute (CTI) was founded in 1991 to support the cable tray industry by engaging in research, development, education, and the dissemination of

[Contact Us](#)

CABLE TRAYS GENERAL INFORMATION AND

General information of Kiraç Metal Cable Trays and installation guide are arranged in accordance with IEC 61537 standards and this document has been prepared for

[Contact Us](#)



A Guide to Installing and Supporting Electrical Cable Trays

This guide covers the critical steps, from selecting the right electrical cable tray and performing accurate cable fill calculations to managing a safe cable pull through

[Contact Us](#)



Safely Installing, Maintaining and Inspecting Cable Trays

Cable trays support cables across open spans in the same way that roadway bridges support traffic. Cable trays can provide a safe component of a power, low voltage control, data or

[Contact Us](#)



100+ Essential Questions Answered About Cable Trays:

Discover over 100 expert answers about cable trays, covering key topics like material selection, load capacity, installation methods, and maintenance.

[Contact Us](#)

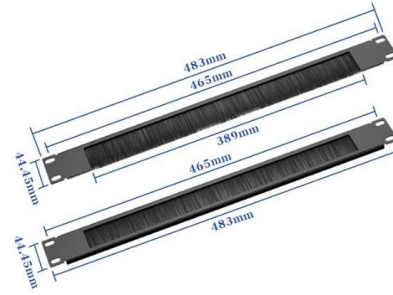




Cable Tray Technical Guide A practical guide to product selection and

A practical guide to product selection and installation This guide for engineers and installers has been developed by ABB as a practical reference regarding cable tray characteristics, installation, and

[Contact Us](#)



Metal Cable Tray Installation Guidelines , Cable Tray Institute

The Cable Tray Institute is making available the current edition of this practical guide for the proper installation of aluminum or steel cable tray systems. These guidelines will be useful to engineers,

[Contact Us](#)

Cable Tray Technical Guide A practical guide to product selection and

Cable tray length is selected based on the load to be supported, the distance between the supports (also referred to as the span), and handling and installation constraints.

[Contact Us](#)



Method Statement installation of Cable Trays and Ladders

This method statement covers the site installation of the cable tray & ladders and the requirements of checks to be carried out.

[Contact Us](#)



DIY Installation: Mastering Light Duty Cable Tray Setup

Explore our comprehensive DIY guide to master the installation of light-duty cable trays. From planning to cable organization, follow step-by-step instructions for a tidy and efficient cable

[Contact Us](#)



7 Types of Cable Trays: How to Choose the Right One

Cable tray systems are engineered support structures designed to route, support, and protect insulated electrical cables used for power distribution,

[Contact Us](#)



Beama Best Practice Guide , Installation Of The System , Cable

The following recommendations are intended to be a practical guide to ensure the safe and proper installation of cable ladder and cable tray systems and channel support and other support systems.

[Contact Us](#)



What is Cable Tray and How it is used in Industrial

What is the Importance of Cable Tray Installation? Cable trays provide mechanical support for electrical cables used for power distribution, control, and

[Contact Us](#)



B-Line series Cable Tray Design Considerations

Our wind certification report provides you with list of acceptable B-Line series cable tray supports, fittings and covers based off of the environmental conditions, cable loading, and type of cable tray in your

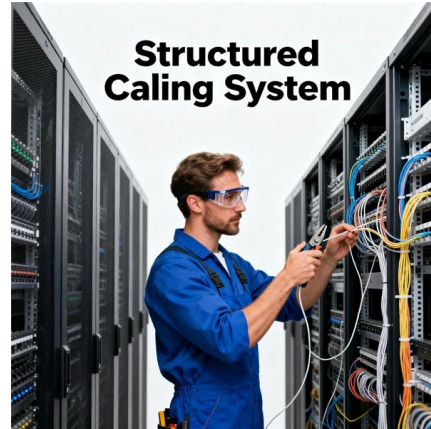
[Contact Us](#)



Guide to cable support systems

Widths of 8 and 15 millimetres enable flexible adjustment to different cable trays, cable ladders and cable volumes. With the help of the matching SBV tightening strap locks and 576 spring chuck, the

[Contact Us](#)



Cable Tray Trunking & Ladder Installation Method for

Resources For Electrical & Electronic Engineers Cable Tray Trunking & Ladder Installation Method for Projects The purpose of this article is to define the

[Contact Us](#)



Best practice guide to cable ladder and cable tray

Cable ladder and cable tray systems The following recommendations are intended to be a practical guide to ensure the safe and proper installation of

[Contact Us](#)



Introduction to 3 types of cable bridges and their

In our life, there is a common cable tray cable trough, tray type, and ladder. Here are the characteristics and uses of these three types of bridges with understanding.

[Contact Us](#)



Contact Us

For datasheets, pricing, or custom fiber access solutions, please visit:
<https://frindel.es>