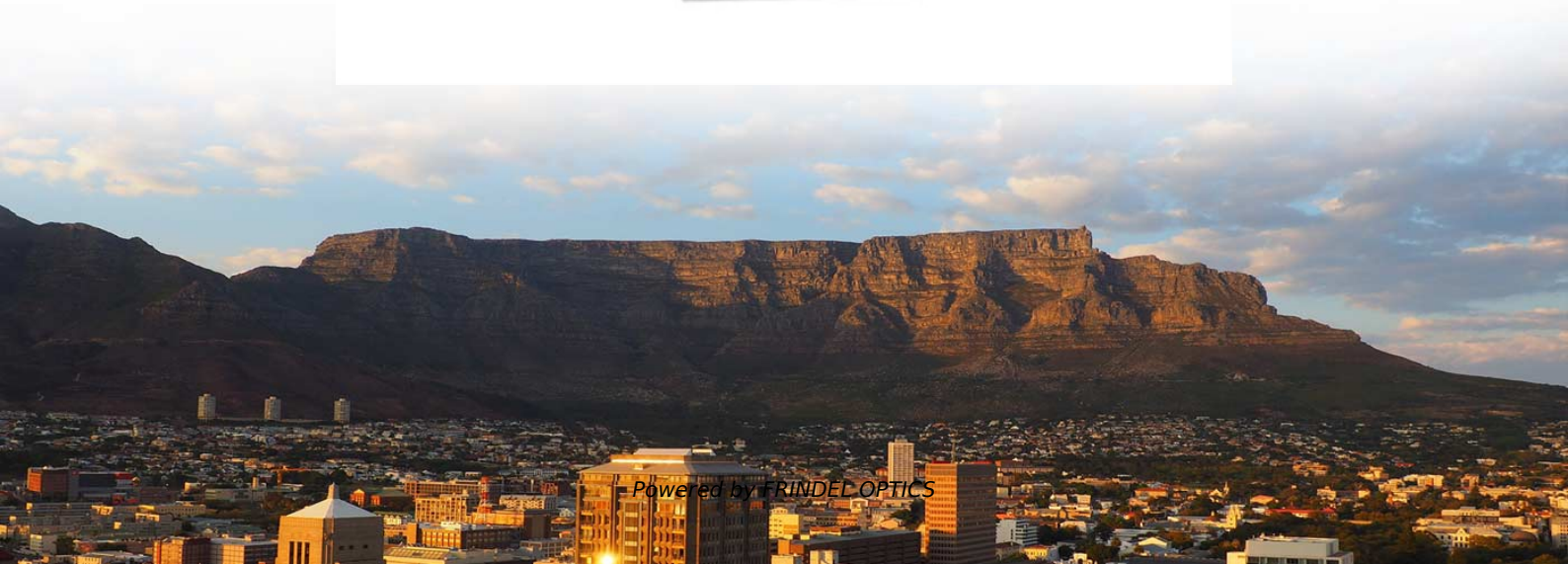


Installation of cable trays in Moldova telecommunications equipment room





Installation of cable trays in Moldova telecommunications equipment



Telecommunications Horizontal Cabling and Support Structure

The maximum horizontal distance shall be 76-meters (250 ft). For ease of cable installation and future expansion in hallway or major distribution routes, cable trays are the preferred method for distributing

[Contact Us](#)

Cable Tray Installation Method Statement

Below is the detailed cable tray installation method statement not only for cable tray but also applicable for GI ladder and trunking for indoor and outdoor applications

[Contact Us](#)



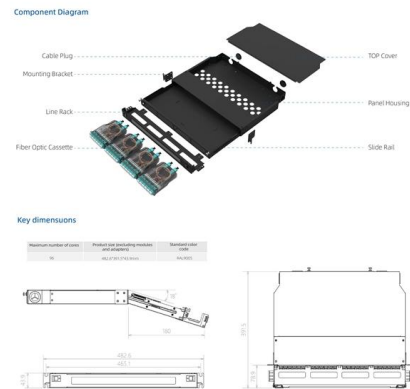
Cable tray manual

These documents: ANSI/NEMA VE-1, Metal Cable Tray Systems; NEMA VE-2, Cable Tray Installation Guidelines; and NEMA FG-1, Non Metallic Cable Tray Systems, are an excellent industry resource in

[Contact Us](#)

Telecom Room Design and Construction Checklists

Maintain 6" clearance from bottom of cable tray to the top of accessible ceiling tile, and 12" clearance above cable trays to facilitate access to the cable tray for cable installation.



Cable Tray Technical Guide A practical guide to product selection and

Cable tray length is selected based on the load to be supported, the distance between the supports (also referred to as the span), and handling and installation constraints.

[Contact Us](#)

Recommendations for Telecommunications Rooms,

Recommendations for Telecommunications Rooms, Enclosures, and Equipment Rooms Depending on design requirements and the size of the project, network

[Contact Us](#)



Telecommunications Room Requirements , PDF

The document outlines requirements for telecommunications spaces including their location, size, doors, floors, walls, ceiling, electrical power, lighting, environmental

[Contact Us](#)



SPECIFICATION 271100 COMMUNICATIONS



CABINETS AND

This section includes the specifications for constructing and building out of Telecommunications Equipment Rooms (MDF/IDFs) to be used for supporting telecommunications

[Contact Us](#)



Telecom Room Design and Construction Checklists

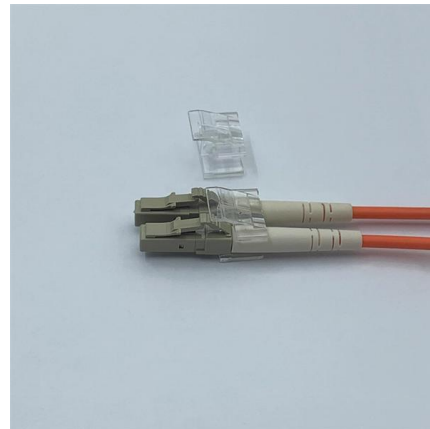
Ceiling protrusions must be placed to assure a minimum clear height of 8'6 inches to provide space over the equipment facilities for cables and suspended racks.

[Contact Us](#)

Telecommunications Rooms 101

In this article, we will explore the importance of telecommunications rooms, their planning and design, equipment installation and cable management, and best practices for ensuring optimal

[Contact Us](#)



Building Telecommunications Infrastructure Requirements

Telecommunications Equipment Room (TER)
Telecommunications Room (TR) Horizontal pathways
Homerun conduits
Cable trays
Perimeter raceway system
Telecommunications outlets
Standard wall

[Contact Us](#)



Mastering Cable Tray Installation , Step-by-Step Guide for a Seamless

Mastering cable tray installation is crucial for creating a safe, organised, and efficient cable management system. By following this step-by-step guide, you can ensure a seamless setup that

[Contact Us](#)



A Complete Guide to Telecommunications Enclosures

The value of telecommunications in today's world makes the devices of this industry essential. Enclosures are the perfect way to safeguard telecommunications.

[Contact Us](#)

Telecommunications

The Main Communications Equipment Room generally serves an entire building, other Telecommunications Rooms, external buildings or campus. The MCER specifications for satellite or

[Contact Us](#)



D60 -Communications Equipment Room

General: The awarded general contractor shall provide complete IT-Telecom/Data CER's (Telecommunications Equipment Rooms) for all Levels, Data Riser Conduits, Communication

[Contact Us](#)



Installing Commercial Building Telecommunications Cabling

A facility (e.g., pathway, cable, conductors) between any of the following spaces: telecommunications rooms, telecommunications enclosures, common telecommunications rooms, floor-serving

[Contact Us](#)



telecommunications technical wiring standards

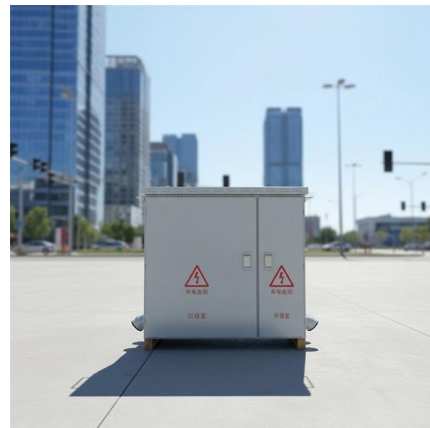
Each telecommunications space (equipment room, telecommunications room, work area, entrance facility, manhole and handhold) must be uniquely identified and labeled.

[Contact Us](#)

Technical Guidelines for Cable Tray Installation and

Cable tray installation must comply with specific technical standards to ensure electrical safety, system reliability, and long-term maintainability. This document

[Contact Us](#)



Telecommunication Room (TR) Requirements & Standards v3.2.a

Stakeholders such as Facilities Management, the PMO, architects and engineers that design physical pathways for the telecommunications cables will benefit by following these guidelines. All new

[Contact Us](#)



Telecommunication/Data System



Telecommunication cables may be installed in J-hooks above accessible ceilings in rooms, but J-hooks shall not be installed in corridors. Provide conduits or cable trays in corridors because the high

[Contact Us](#)



Cable structure

Lesson 3: Installing Supporting Structures

Telecommunications closets and equipment rooms. There are two types of spaces where the termination of cabling permits cross-connection and interconnection: equipment rooms and

[Contact Us](#)

Installing Commercial Building Telecommunications Cabling

In a data center, a facility (e.g., pathway, cable, conduits) between any of the following spaces: entrance rooms or spaces, main distribution areas, horizontal distribution areas, and

[Contact Us](#)



Method Statement installation of Cable Trays and Ladders

This method statement covers the site installation of the cable tray & ladders and the requirements of checks to be carried out.

[Contact Us](#)

Cable Tray Technical Guide A practical



guide to product selection and

A practical guide to product selection and installation This guide for engineers and installers has been developed by ABB as a practical reference regarding cable tray characteristics, installation, and

[Contact Us](#)



SECTION 271100

Coordinate layout and installation of communications equipment with owner's telecommunications and LAN equipment and service suppliers. Coordinate service entrance arrangement with local exchange

[Contact Us](#)

Contact Us

For datasheets, pricing, or custom fiber access solutions, please visit:
<https://frindel.es>