

Installation of cable tray with 35-degree horizontal displacement bend





Installation of cable tray with 35-degree horizontal displacement be



Cable Tray Support Spacing: Key Guidelines Explained

Explore the essential cable tray support spacing requirements for safe and efficient installations. Learn NEC guidelines for perforated, ladder, and wire

[Contact Us](#)

Cable tray manual

Nearly every aspect of cable tray design and installation has been explored for the use of the reader. If a topic has not been covered sufficiently to answer a specific question or if additional information is

[Contact Us](#)



A Guide to Installing and Supporting Electrical Cable Trays

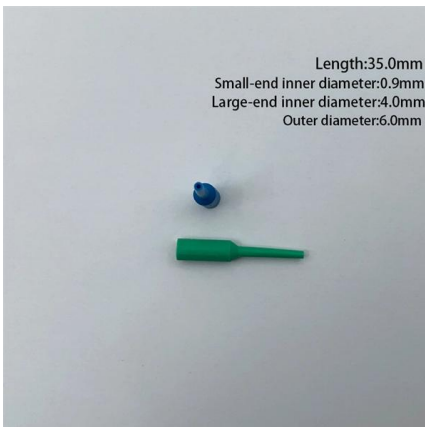
A professional guide to installing electrical cable tray systems per NEC Article 392. Covers support, securing cables, and fill calculations.

[Contact Us](#)

Cable Tray

Cable Trays Constructed from single sheet of perforated metal. They are convenient for cables which require both a degree of protection from external damage and some ventilation.

[Contact Us](#)



2005

Nearly every aspect of cable tray design and installation has been explored for the use of the reader. If a topic has not been covered sufficiently to answer a specific question or if additional information is

[Contact Us](#)

Cable tray manual

These documents: ANSI/NEMA VE-1, Metal Cable Tray Systems; NEMA VE-2, Cable Tray Installation Guidelines; and NEMA FG-1, Non Metallic Cable Tray Systems, are an excellent industry resource in

[Contact Us](#)



Horizontal Cable Tray System Installation , Telecom System

This article is about Horizontal Cable Tray System Installation of Building Telecom Distribution System as per International Codes and standards.

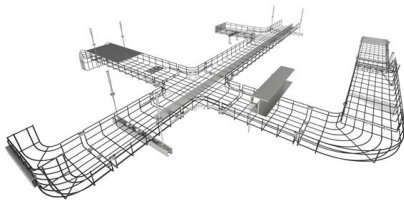
[Contact Us](#)



Best Practice Guide to Cable Ladder and Cable Tray Systems

Introduction This publication is intended as a practical guide for the proper and safe* installation of cable ladder systems, cable tray systems, channel support systems and associated supports.

[Contact Us](#)



Precautions for Cable Tray Installation

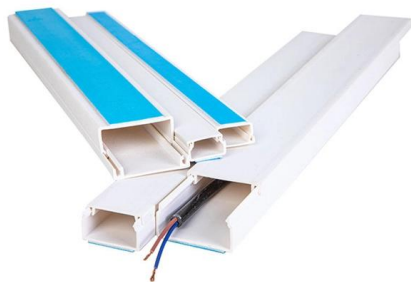
Cable Tray Installation Guide The correct installation of cable trays is crucial for establishing a reliable and efficient cable system. It ensures that cables are

[Contact Us](#)

GUIDE CABLE TRAYS TECHNICAL

In accordance with its continuous improvement policy, Legrand reserves the right to change the specifications and illustrations without notice. All illustrations, descriptions and technical information

[Contact Us](#)



Method Statement installation of Cable Trays and Ladders

This method statement covers the site installation of the cable tray & ladders and the requirements of checks to be carried out.

[Contact Us](#)



Cable Tray Offset Formula , How To Make Cable Tray Offset Bend

How to make 45°degree OFFSETS cable tray (50mm depth) Practical Tutorial 2 Cable Tray Side Offset Calculation Formula , Complete Explanation in Hindi Cable Tray 3 Cut 90 Degree Bend !!

[Contact Us](#)



Installation Guide

This Installation guide covers the most popular and standard installation questions that may come up. If you have any further questions, please contact our sales team at 888-4WB TRAY for assistance.

[Contact Us](#)

Installation Guide

WBT PreForm PreForm was designed by WBT to eliminate the lengthy amount of time to field configure tray when making horizontal tray bends, and provide a standard for tray installations where the

[Contact Us](#)



Best practice guide to cable ladder and cable tray

Cable ladder and cable tray systems The following recommendations are intended to be a practical guide to ensure the safe and proper installation of

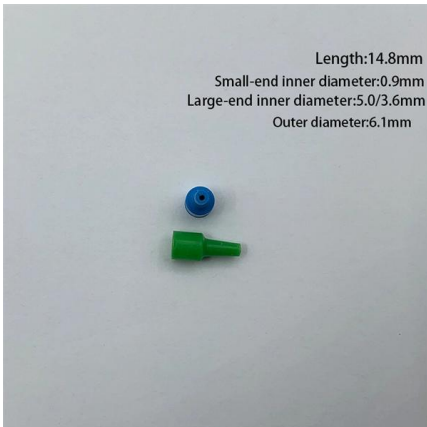
[Contact Us](#)



CABLE TRAY SYSTEMS GUIDE

The Ladder Tray features light, rugged, tubular steel construction. It is designed for mechanical support and strain relief in long runs of cable and creates a smooth gradual bend for cable. Rail and stringer

[Contact Us](#)



Telecommunications Horizontal Cabling and Support Structure

The maximum horizontal distance shall be 76-meters (250 ft). For ease of cable installation and future expansion in hallway or major distribution routes, cable trays are the preferred method for distributing

[Contact Us](#)

B-Line series Cable Tray Design Considerations

As an industry leader in cable tray, Eaton offers one of the widest ranges of cable management solutions available in the market today with its B-Line series portfolio. With unmatched quality and service, we

[Contact Us](#)



A Guide to Installing and Supporting Electrical Cable Trays

This guide covers the critical steps, from selecting the right electrical cable tray and performing accurate cable fill calculations to managing a safe cable pull through

[Contact Us](#)

INSTALLATION GUIDE



To ensure that the complete ladder tray wiring system performs as designed, it is important that it is properly installed. Personal injury as well as property damage will result if proper installation and

[Contact Us](#)



GUIDE CABLE TRAYS TECHNICAL

If it has excellent electrical continuity and is integrated in the installation's equipotential bonding system, a metal cable tray reduces the coupling's impact and thus contributes to good EMC of the electrical

[Contact Us](#)



How to make cable tray bend / Cable tray offset formula / cable tray 45

How to make cable tray bend / Cable tray offset formula / cable tray 45 degree bend
Queries Solved in This Video: cable tray 45 degree bend
cable tray me offset

[Contact Us](#)



Document DICOS

For Cable Tray Installers: NEMA VE 2-2018 (hereinafter referred to as NEMA VE 2) is intended as a practical guide for the proper installation of cable tray systems.

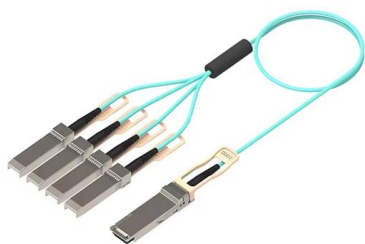
[Contact Us](#)



Cable Tray Technical Guide A practical guide to product selection and

Cable tray length is selected based on the load to be supported, the distance between the supports (also referred to as the span), and handling and installation constraints.

[Contact Us](#)



CABLE TRAY

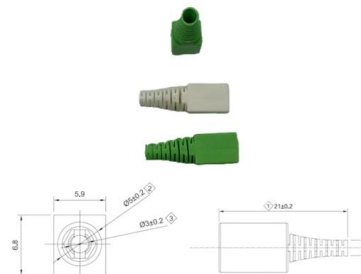
For Cable Tray Installers--This publication is intended as a practical guide for the proper installation of cable tray systems. Cable tray systems design shall comply with NEC Article 392, NEMA VE 1, and

[Contact Us](#)

cable tray system

A cable tray system is an assembly of metallic cable tray sections and accessories, that forms a rigid structural system to support cables.

[Contact Us](#)



LEGRAND CABLE TRAYS TECHNICAL GUIDE

In accordance with its continuous improvement policy, Legrand reserves the right to change the specifications and illustrations without notice. All illustrations, descriptions and technical information

[Contact Us](#)

Cable tray horizontal bends , Information



by Electrical Professionals

Ladder style, 48" wide 6" tall aluminum I beam, open bottom 6" rung spacing. Manufacturer offers factory bends 30 degrees to 90. We are installing tray around a clarifier at a

[Contact Us](#)



Guide to cable support systems

Widths of 8 and 15 millimetres enable flexible adjustment to different cable trays, cable ladders and cable volumes. With the help of the matching SBV tightening strap locks and 576 spring chuck, the

[Contact Us](#)

Contact Us

For datasheets, pricing, or custom fiber access solutions, please visit:
<https://frindel.es>