

Installation of cable tray rails





Installation of cable tray rails



Mastering Cable Tray Installation , Step-by-Step Guide for a Seamless

Learn how to install cable trays correctly. Get the ultimate step-by-step guide on setting up a seamless and reliable cable management system.

[Contact Us](#)



B-Line series Cable Tray Design Considerations

Design recommendations for ladder cable tray
When supporting small diameter multi-conductor control and instrumentation cables, 6, 9, or 12-inch rung spacings should be specified.
Quality Type TC,

Cablofil Cable Management , Legrand

Build a cable management system with Cablofil wire mesh cable tray, ladder cable tray, prefab assemblies for branch circuit wiring, fasteners, and accessories.

[Contact Us](#)



P31 cable trays , , Products , Legrand Jordan Jordan

The interlocking P31 version (male/female), which only needs 2 to 4 screws on the junction, makes it easier to align lengths and the junction's stability while the screws are tightened. Available on the

[Contact Us](#)



- TELECOM CABINET
- BRAND NEW ORIGINAL
- HIGH-EFFICIENCY

Cable trays , Ahlsell - We make it easier to be professional

Ahlsell Products Electric Installation equipment 11-18 11a Cable trays and Fitting rails Cable trays

[Contact Us](#)

INSTALLATION GUIDE

Center hung tray supports allow for quicker and easier cable installation by allowing cables to be deposited into tray systems from each side. There is a maximum load capacity per hanger of 318 kg

[Contact Us](#)



Cable structure



Best Practice Guide to Cable Ladder and Cable Tray Systems

This publication is intended as a practical guide for the proper and safe* installation of cable ladder systems, cable tray systems, channel support systems and associated supports.

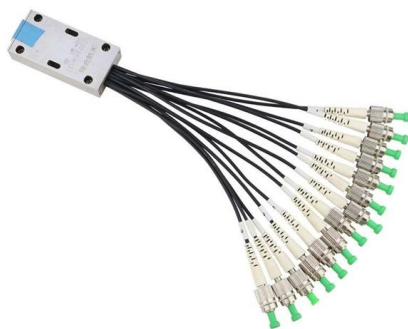
[Contact Us](#)

How to Get Quick and Accurate Cable Tray Pricing



Learn how to get quick and accurate cable tray pricing for your projects. This guide covers new builds, renovations, and custom systems.

[Contact Us](#)



Cable Tray Systems: A Complete Guide to Types

Discover the essential guide to cable tray systems. Learn about ladder, trough, and wire mesh types, key components, and expert installation tips

[Contact Us](#)

How To Use Cable Tray Architecture To Finish A Wall?

This guide provides step-by-step instructions on installing a cable tray on a wall, covering different types of cable trays, tools needed, and safety tips.

[Contact Us](#)



How to Install Cable Tray: A Comprehensive Guide to Different Cable

Welcome to our step-by-step guide on installing cable trays! In this video, we'll explore the different types of cable trays available and provide detailed instructions for their installation.

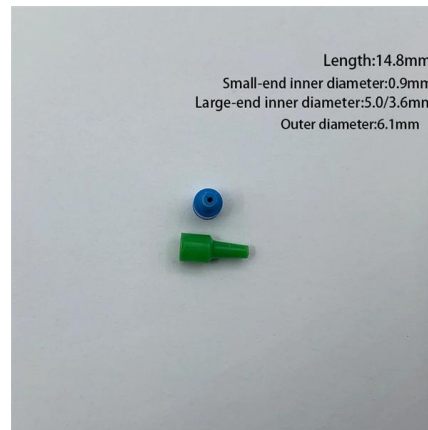
[Contact Us](#)



Cable Trays - Commercial Cable Management Solutions

Cable trays provide reliable cable management solutions for buildings and facilities. They include wire-mesh trays, ladder trays, and raceways. These trays organize and protect electrical wiring safely.

[Contact Us](#)



Cable Tray Installation

Whether you're building a commercial setup or upgrading an industrial plant, proper cable tray installation ensures neat wiring, safe access, and easy maintenance. But before you lay the first tray

[Contact Us](#)

Method Statement installation of Cable Trays and Ladders

This method statement covers the site installation of the cable tray & ladders and the requirements of checks to be carried out.

[Contact Us](#)





Resources for Cable tray and ladder systems

Submittals for cable ladder and tray Eaton's submittal builder tool for B-Line series cable ladder and tray allows you to easily filter, select and download straight

[Contact Us](#)

Cable Tray Systems Market

Cable Tray Systems Market Overview The global Cable Tray Systems Market size is projected to grow from USD 5632.39 million in 2026 to USD 6401.21 million in 2027, reaching USD

[Contact Us](#)



Aluminum Ladder Tray

Ladder cable trays are the preferred solution and are the most economical choice for creating the ideal routing path. Cold swaging allows for the side rails to be turned

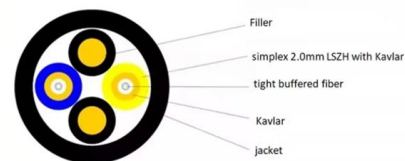
[Contact Us](#)



Cable Tray Technical Guide A practical guide to product selection and

Cable Tray Technical Guide A practical guide to product selection and installation This guide for engineers and installers has been developed by ABB as a practical reference regarding cable tray

[Contact Us](#)





5 Steps to Learn How to Install Cable Trays

Here is a step-by-step guide on how to install a standard metal cable tray system (e.g., ladder or perforated type). Before starting, ensure you have the

[Contact Us](#)

Cable Tray Technical Guide A practical guide to product selection and

A practical guide to product selection and installation This guide for engineers and installers has been developed by ABB as a practical reference regarding cable tray characteristics, installation, and

[Contact Us](#)



Cable Tray Bend Calculator

For a 90-degree bend, ensure the tray's internal radius meets the cable's minimum bend requirement. If fabricating, mark the side rail at intervals based on the calculated arc length, cut V-notches, and

[Contact Us](#)

INSTALLATION GUIDE

To ensure that the complete ladder tray wiring system performs as designed, it is important that it is properly installed. Personal injury as well as property damage will result if proper installation and

[Contact Us](#)





Mastering Cable Tray Installation , Step-by-Step Guide for a Seamless

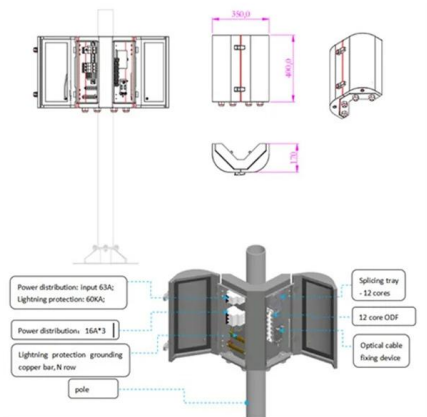
Mastering cable tray installation is crucial for creating a safe, organised, and efficient cable management system. By following this step-by-step guide, you can ensure a seamless setup that

[Contact Us](#)

A Guide to Installing and Supporting Electrical Cable Trays

This guide covers the critical steps, from selecting the right electrical cable tray and performing accurate cable fill calculations to managing a safe cable pull through

[Contact Us](#)



Guide to cable support systems

Widths of 8 and 15 millimetres enable flexible adjustment to different cable trays, cable ladders and cable volumes. With the help of the matching SBV tightening strap locks and 576 spring chuck, the

[Contact Us](#)

Contact Us

For datasheets, pricing, or custom fiber access solutions, please visit:
<https://frindel.es>