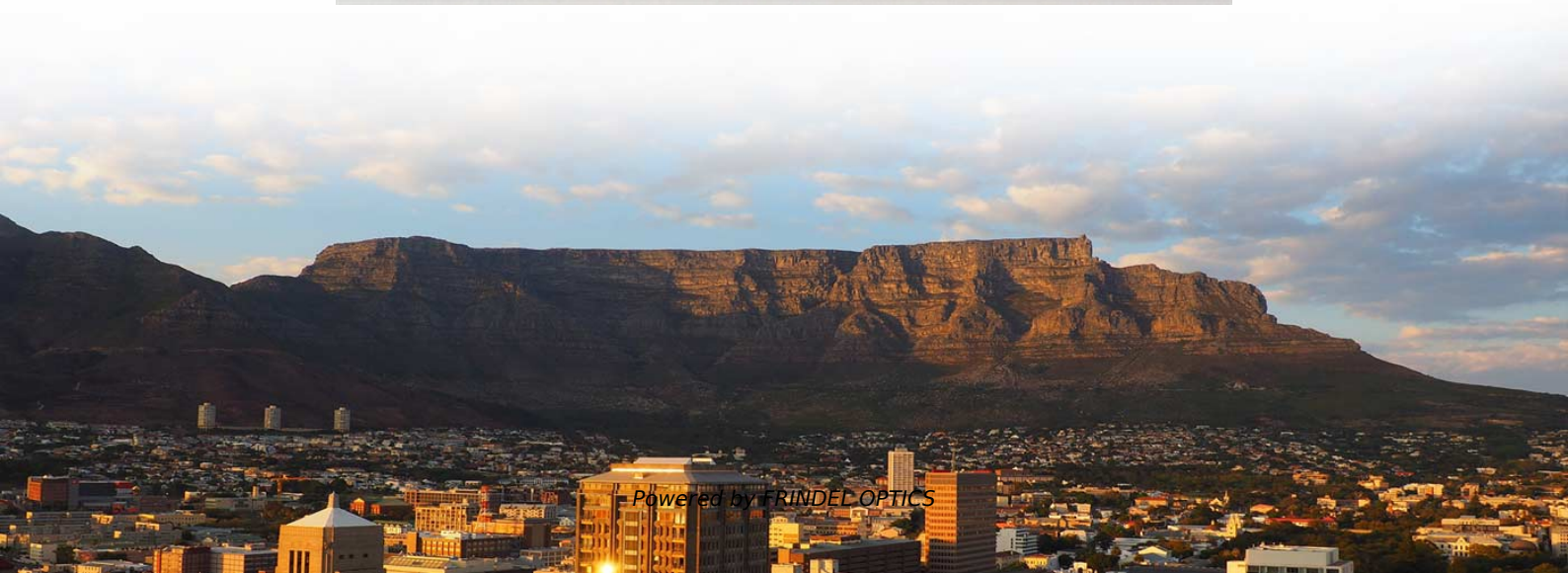


Installation of Level 3 Distribution Box in Brunei





Installation of Level 3 Distribution Box in Brunei



Size determination, installation method and wiring mode

The distribution box is the central hub of the home circuit and the general control of our daily power consumption. It is an indispensable electrical equipment. If there

[Contact Us](#)

Key Points Of Installation And Collocation Of Distribution Box In

1. The power distribution system at the construction site shall be distributed in different levels. The main distribution box (or distribution room) shall be set up. The distribution box shall be set

[Contact Us](#)



GENERAL LISTS OF APPROVED PRODUCTS /

This listing is intended to be used as a reference for vendors in Brunei Darussalam. Products produced by manufacturers not listed herein are not acceptable to be use in the country.

[Contact Us](#)

The Complete Guide to Distribution Box: Installation, Types & More

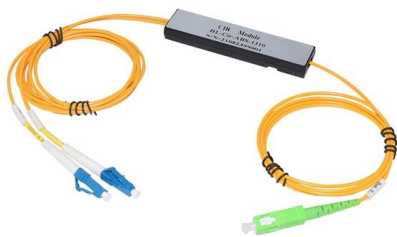
Blog The Complete Guide to Distribution Box: Installation, Types & More By Admin Aug 2, 2025
No Comments # distribution box Introduction
Electrical systems power our homes, offices, and



ESCOM ELECTRICAL SAFETY BEST PRACTICE:

6.4.7.3 BS 7375 Distribution of electricity on construction and demolition site-code of practice recommended the use of RLV for builders, and contractors to feed socket outlets, portable

[Contact Us](#)



How to Install a Cable Distribution Box Safely and

In modern electrical systems, cable distribution boxes (also known as electrical distribution boxes or distribution boxes) play a crucial role as the key

[Contact Us](#)



Electrical Installation Requirements

For electrical installation that distributes more than one distribution board, a separate connection block for each phase with appropriate current rating shall be provided, for terminating incoming and

[Contact Us](#)





Home

Switchboards Control Panel Feeder Pillar - Operating in Brunei Darussalam since 1994 with a modern production facilities spanning 20,000 square foot of floor

[Contact Us](#)



ESCOM ELECTRICAL SAFETY BEST PRACTICE:

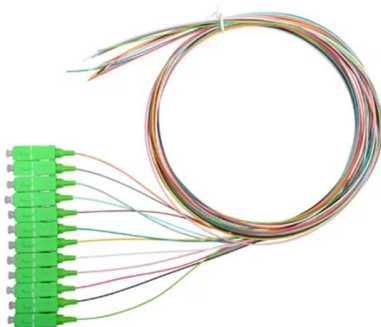
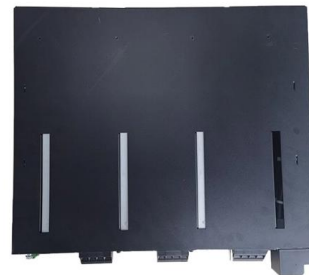
What is ESCOM? The Safety, Health and Environment National Authority (SHENA) and Autoriti Elektrik Negara Brunei Darussalam (AENBD) established the Electrical Safety Committee or "ESCOM" in

[Contact Us](#)

8th. JUNE, 2017 No. S 51 CONSTITUTION OF BRUNEI DARUSSALAM

In exercise of the power conferred by Article 83(13) of the Constitution of Brunei Darussalam, His Majesty the Sultan and Yang Di-Pertuan hereby makes the following Order -

[Contact Us](#)



GUIDELINES AND BEST PRACTICES FOR LOW VOLTAGE (LV)

4.1 This document provides best practices for any electrical installation and appliance requirements as per Brunei Electrical Installation Requirements as well as some recommendations to establish good

[Contact Us](#)

Brunei Darussalam EIR 2011 Electrical

The 2011 Electrical Installation Requirements (EIR) guide for Brunei Darussalam. Covers standards for public, commercial, and domestic electrical systems.

[Contact Us](#)



Brunei Energy and Power Services

Brunei Energy and Power Services - provide on-site and in-house professional services for Testing, Maintenance and Retrofitting of low, medium and high voltage standard and explosion proof

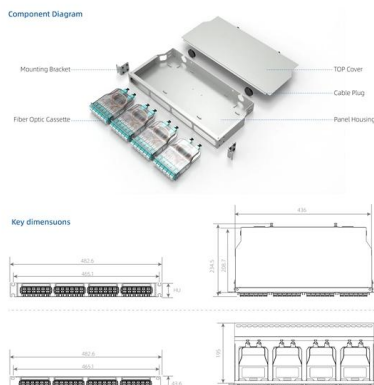
[Contact Us](#)



Low-voltage distribution networks

In European countries the standard 3-phase 4-wire distribution voltage level is 230/400 V. Many countries are currently converting their LV systems to the latest IEC standard of 230/400 V nominal

[Contact Us](#)



How to confirm whether the installation location of the

The electrical distribution box plays a vital role in the power system. It is responsible for distributing electricity to various circuits and equipment.

[Contact Us](#)



GUIDELINES AND BEST PRACTICES FOR LOW VOLTAGE (LV)

3 PURPOSE 3.1 This Guidelines and Best Practices for Electrical Safety functions as a source of guidance and reference for all aspects related to workplace for low voltage (LV) wiring and electrical

[Contact Us](#)



LAWS OF BRUNEI CHAPTER 223 ELECTRICITY

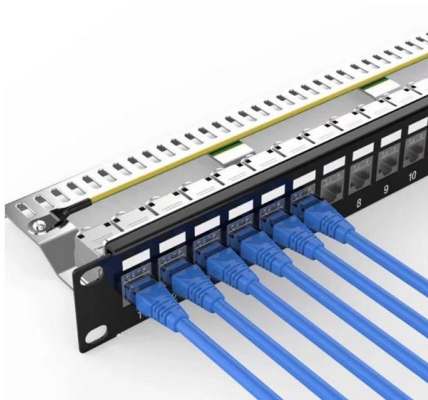
"distribution system" means a system of interconnected electric lines, electrical plants and substations used by a distribution licensee to distribute electricity;

[Contact Us](#)

The installation requirements for the distribution box

A distribution box is the heart of any electrical system. It takes the incoming power and safely distributes it to different circuits throughout your

[Contact Us](#)



Distribution Box Installation: A Complete Guide to Safe

The distribution box, often referred to as a breaker box, fuse box, or electrical panel, is a critical component of any electrical system. It acts as the central hub for

[Contact Us](#)

Key Points Of Distribution Box Installation



3. Distribution box and switch box shall be installed in ventilated, dry and normal temperature places. It is strictly prohibited to install it in the gas, flue gas, steam, liquid and other harmful media with severe

[Contact Us](#)



BRUNEI DARUSSALAM

Suppliers registering products should register through the Product Procurement Section. Registration Committee shall strictly review and analyse input information prior to endorsing approval of product

[Contact Us](#)

Distribution Box Installation: A Complete Guide to Safe

In this comprehensive guide, we'll cover everything you need to know about distribution box installation, from the basics to the step-by-step installation

[Contact Us](#)



Services

Services Services We Offer We undertake Supply, Installation & Maintenance of all MEP contracts and for all types of projects, high rise commercial & residential buildings, residential & industrial

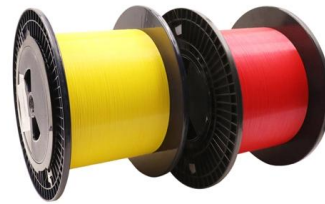
[Contact Us](#)



How To Installation Distribution Box: Efficient Guide

How To Installation Distribution Box: Efficient Guide Electricity is key to our modern comforts in Singapore. Yet, we often overlook the safety it brings. The distribution box is a silent protector in your

[Contact Us](#)



BRUNEI DARUSSALAM GOVERNMENT GAZETTE No. S 70

47. (1) Any person who desires to install an air-conditioning unit, on the exterior of any building, or which projects outwards from any building, shall engage a trained air-conditioning unit installer to carry out

[Contact Us](#)

Brunei Electrical Installation Guide 2011

The guide aims to incorporate principles and engineering practices for electrical systems and is intended to be used by designers, installers, and operators of

[Contact Us](#)



How to Install a Distribution Box--A Comprehensive

Whether you are an electrical contractor or a construction brigade, knowing how to properly and safely install distribution boxes is the basis of

[Contact Us](#)



Contact Us

For datasheets, pricing, or custom fiber access solutions, please visit:
<https://frindel.es>