

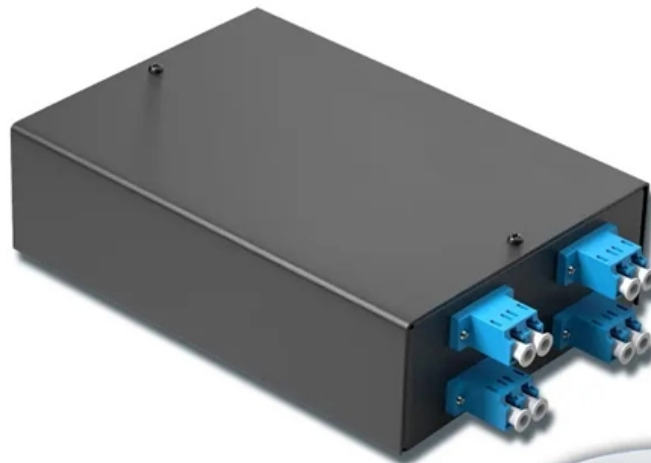
# Installation of 10kV Cable Trays

4-port 8-core LC wall-mounted fiber terminal box (empty frame) |

Surface painted

Scientific plate fiber

Cold-rolled steel plate



**Lifetime quality assurance**

**Free shipping**

Customizable for telecommunications





## Overview

---

Step-by-step on-site guide: learn how to plan, mark, support, and install cable trays correctly, from shop drawing approval to final checks. The Cable Tray ng standards, performance standards, test standards and application in this document have been tested extens ompetent professional en completely installed, without damage either to conductors or. With our many years of experience, we are one of the leading manufacturers in this field. We recognize the need for a complete cable tray reference source for electrical engineers and designers. Cable ladder systems and cable tray systems shall be manufactured in accordance with BS EN 61537, channel support. This guide covers the critical steps, from selecting the right electrical cable tray and performing accurate cable fill calculations to managing a safe cable pull through and ensuring all bonding and grounding requirements are met.



## Installation of 10kV Cable Trays

---



### How to install Cable Trays - Best Guide in 2026

Step-by-step on-site guide: learn how to plan, mark, support, and install cable trays correctly, from shop drawing approval to final checks.

[Contact Us](#)

### A Guide to Installing and Supporting Electrical Cable Trays

A professional guide to installing electrical cable tray systems per NEC Article 392. Covers support, securing cables, and fill calculations.

[Contact Us](#)



### Ampacity of Power Cables Installed in Cable Trays

Cable trays offer numerous advantages, including ease of installation, flexibility, and improved cable management. However, they also present challenges in terms of

[Contact Us](#)

### A Guide to Installing and Supporting Electrical Cable Trays

This guide covers the critical steps, from selecting the right electrical cable tray and performing accurate cable fill calculations to managing a safe cable pull through





### **Best Practice Guide to Cable Ladder and Cable Tray Systems**

This publication is intended as a practical guide for the proper and safe\* installation of cable ladder systems, cable tray systems, channel support systems and associated supports.

[Contact Us](#)



### **Technical Guidelines for Cable Tray Installation and**

Cable tray installation must comply with specific technical standards to ensure electrical safety, system reliability, and long-term maintainability. This document

[Contact Us](#)



### **Cable tray manual**

These documents: ANSI/NEMA VE-1, Metal Cable Tray Systems; NEMA VE-2, Cable Tray Installation Guidelines; and NEMA FG-1, Non Metallic Cable Tray Systems, are an excellent industry resource in

[Contact Us](#)

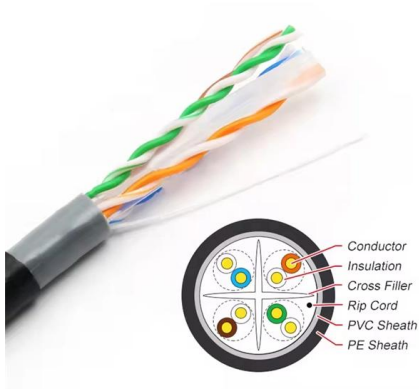
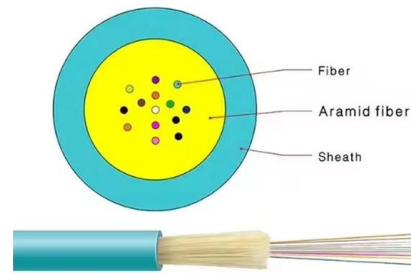




## CABLE TRAYS GENERAL INFORMATION AND

Using cable trays as walkways can cause personal injury and also damage cable tray and installed cables. Performances of cable tray systems are dependent on

[Contact Us](#)



## Master Cable Tray Installation: A Professional Step-by

Learn how to install cable trays for large-scale projects with our professional, step-by-step guide covering industry standards, safety protocols,

[Contact Us](#)

## Best Practices for Installing Cables in Trays

Learn the best practices for installing cables in trays. This guide covers essential steps, technical requirements, and key details

[Contact Us](#)



## Cable Tray System Explained Animated Installation Guide , FK

This animated video demonstrates how cable tray systems are installed in industrial and commercial projects. Watch the step-by-step process of cable routing, support fixing, and tray alignment.

[Contact Us](#)

## Cable Tray Systems: Requirements and



## Best Practices

Comprehensive guide to cable tray systems requirements: tray types, materials, loading, supports, bonding, routing, and best practices for safe electrical cable management.

[Contact Us](#)



## Safely Installing, Maintaining and Inspecting Cable Trays

Cable trays support cables across open spans in the same way that roadway bridges support traffic. Cable trays can provide a safe component of a power, low voltage control, data or

[Contact Us](#)

## Cable Tray Installation Procedure Guide

This document provides procedures for installing cable trays according to international standards. It describes inspecting and storing cable trays upon

[Contact Us](#)



## Cable Tray Technical Guide A practical guide to product selection and

A practical guide to product selection and installation This guide for engineers and installers has been developed by ABB as a practical reference regarding cable tray characteristics, installation, and

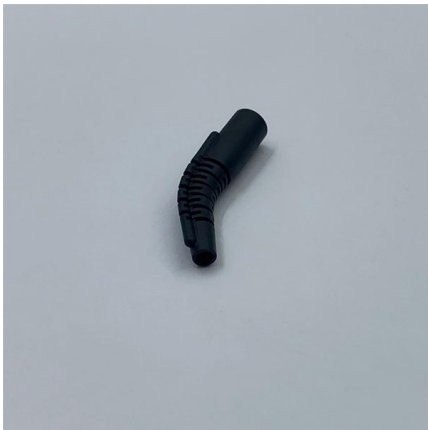
[Contact Us](#)



## Cable Tray Installation

Learn everything about cable tray installation with our complete guide. Discover types, steps, and safety tips for efficient electrical cable management.

[Contact Us](#)



## Cable Tray Installation

Whether you're building a commercial setup or upgrading an industrial plant, proper cable tray installation ensures neat wiring, safe access, and easy maintenance. But before you lay the first tray

[Contact Us](#)

## CABLE TRAYS GENERAL INFORMATION AND

General information of Kiraç Metal Cable Trays and installation guide are arranged in accordance with IEC 61537 standards and this document has been prepared for

[Contact Us](#)



## Mastering Cable Tray Installation , Step-by-Step Guide for a Seamless

Learn how to install cable trays correctly. Get the ultimate step-by-step guide on setting up a seamless and reliable cable management system.

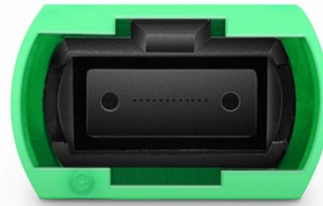
[Contact Us](#)



## CABLE TRAY INSTALLATION PROCEDURE

5. Cable tray installation shall preferably be installed flat in buildings or operating structures. Tray shall run as far as possible under flooring and walkways. Only in

[Contact Us](#)



## GUIDE CABLE TRAYS TECHNICAL

If it has excellent electrical continuity and is integrated in the installation's equipotential bonding system, a metal cable tray reduces the coupling's impact and thus contributes to good EMC of the electrical

[Contact Us](#)

## Cable Tray Technical Guide A practical guide to product selection and

Cable tray length is selected based on the load to be supported, the distance between the supports (also referred to as the span), and handling and installation constraints.

[Contact Us](#)



## Method Statement installation of Cable Trays and Ladders

This method statement covers the site installation of the cable tray & ladders and the requirements of checks to be carried out.

[Contact Us](#)

## Cable Laying Jobs in the Middle East (May



Apply now to over 40 Cable Laying jobs in Middle East and Gulf and make your job hunting simpler. Find the latest Cable Laying job vacancies and employment opportunities in Middle East and Gulf.

[Contact Us](#)



### POWER CABLE INSTALLATION GUIDE

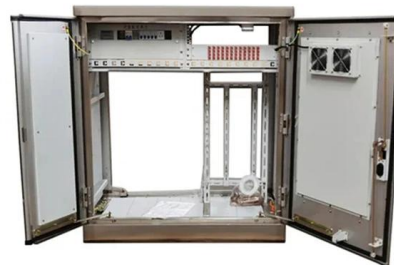
Cables installed into conduits or trays have installation parameters such as maximum pulling tensions, sidewall pressure, clearance, and jamming, which must be considered. Other installations, such as

[Contact Us](#)

### Guide to cable support systems

Widths of 8 and 15 millimetres enable flexible adjustment to different cable trays, cable ladders and cable volumes. With the help of the matching SBV tightening strap locks and 576 spring chuck, the

[Contact Us](#)



## Contact Us

---

For datasheets, pricing, or custom fiber access solutions, please visit:  
<https://frindel.es>