

Installation height of electrical distribution box in equipment room





Overview

The proper installation of a distribution box involves placing it at the right height to ensure safety and convenience. Dedicated space: The space equal to the width and depth of electrical equipment in addition to the space extending from the floor to 6 feet above the equipment or structural ceiling. Ensure safe placement: install in dry, accessible areas with good ventilation and at appropriate height (typically ~1.



Installation height of electrical distribution box in equipment room



Key Points Of Distribution Box Installation

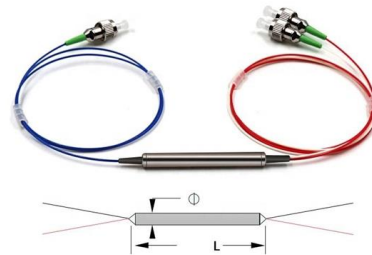
1. The power distribution system at the construction site shall implement hierarchical power distribution, which shall be equipped with a general distribution box (or distribution room), a distribution box below

[Contact Us](#)

Installation requirements for distribution boxes

Distribution boxes shall be made of non-combustible materials; open distribution boards may be installed in production places and offices with low electric shock risk; enclosed cabinets shall

[Contact Us](#)



Electrical Panel Mounting Height Requirements: General

Editor's Note: read part XIX here NEC Requirements for electrical panel mounting height One way to help safeguard people from hazards arising from electricity use

[Contact Us](#)

Understanding Distribution Boxes: A Comprehensive Guide

support safer operation in electrical systems For this reason, distribution boxes are widely used in homes, commercial buildings, industrial

[Contact Us](#)



QHSE DOCUMENTS-METHOD STATEMENT FOR

1.0. Scope This methodology document highlights the technical guidelines for the installation of Electrical Distribution Boards (DBs).

[Contact Us](#)

Electrical Panel Location and Installation: Clearance,

Conclusion Understanding the best electrical breaker box location in your house is extremely important because the circuit breaker box controls the

[Contact Us](#)



Transformer and Distribution Cabinet Equipment

2.1 Pre-installation Requirements for Complete Distribution Cabinets, Control Cabinets, and Distribution Boxes: - The indoor ceiling and wall decoration

[Contact Us](#)





Safe Clearances for Electrical Equipment: Working

The dedicated equipment space also extends from the floor to a height of 6 feet above the equipment or to the structural ceiling, whichever is

[Contact Us](#)



Regulations / guidance regarding siting of distribution

Hello All Is there any regulations regarding the siting of distribution boards like level area in front of board and dimensions of area in front of board etc?

[Contact Us](#)

2013 48 Autumn Wiring Matters

Local authorities can have their own electrical specification with mounting heights provided for equipment and accessories. Obviously, if any do not agree with Building Regulations, consult the

[Contact Us](#)



Installation process of distribution box

3. The distribution box shall be embedded in the installation, and the panel after installation shall be flat with the wall. 4. After the cabinet (panel) adjustment is

[Contact Us](#)



How to confirm whether the installation location of the

Share to: The electrical distribution box plays a vital role in the power system. It is responsible for distributing electricity to various circuits and

[Contact Us](#)



The height requirement of distribution box

When the number of box holes is insufficient or the hole diameter is not consistent with the pipe diameter of the distribution box, the hole opening machine can be used to open the hole,

[Contact Us](#)

How to design electrical rooms

Main equipment rooms The main electrical room, or service entrance space, should coordinate with the local electrical utility (refer to NEC Article 230, Services, for additional details

[Contact Us](#)



Installation Requirements and Dimensions for Power

Electrical components, instruments, switches, and wiring in the panel (cabinet) shall be neatly arranged, securely mounted, and easily operable. Floor

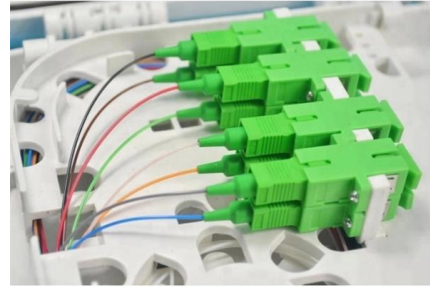
[Contact Us](#)



NEC Requirements for Panelboards and Load Centers

If the height of the electrical equipment is less than 6.5 feet, but when mounted, the top of the equipment exceeds 6.5 feet, the minimum workspace height shall be

[Contact Us](#)



2013

In the above context, the General Specification for Electrical Works (Internal) aims to lay down General guidelines to ensure safe, efficient, reliable and economical use of electricity.

[Contact Us](#)

How to Improve the Installation Quality of Distribution Boxes

According to standards, the height from the bottom edge of a distribution box to the floor is generally 1.5m, and for distribution boards, it should not be less than 1.8m.

[Contact Us](#)



Transformer and distribution cabinet equipment installation, standards

Distribution cabinets, tables, boxes, and trays should be installed firmly and should not be placed directly under water pipes. Transformer rooms, distribution rooms, etc. should be equipped

[Contact Us](#)



The installation requirements for the distribution box

Installation height and fixing method?: The bottom edge of the distribution box is usually between 1.5 meters and 1.8 meters above the ground,

[Contact Us](#)



Standard Heights for Electrical Installations

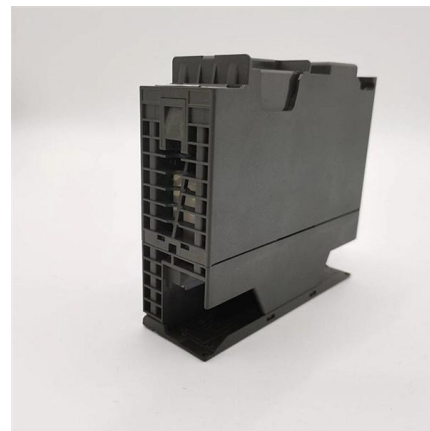
The document provides guidelines for mounting heights for electrical switch sockets, light switches, and MCB distribution boards. It specifies the heights for different

[Contact Us](#)

What is the Ideal Installation Height for a Distribution Box

Install a distribution box at 4.5 to 5.5 feet high for safety, accessibility, and compliance. This height ensures easy use and protection from hazards.

[Contact Us](#)



What is the Ideal Installation Height for a Distribution Box

The proper installation of a distribution box involves placing it at the right height to ensure safety and convenience. Mounting it 4.5 to 5.5 feet (1.4 to 1.7 meters) high

[Contact Us](#)

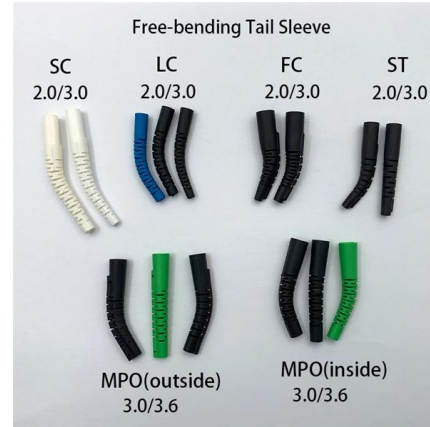




How to Install a Distribution Box--A Comprehensive

The best height for installing residential distribution boxes is 1.5 meters above the ground, while for industrial distribution boxes, the height

[Contact Us](#)



Contact Us

For datasheets, pricing, or custom fiber access solutions, please visit:
<https://frindel.es>