

Installation height of cable tray for lighting troughs





Installation height of cable tray for lighting troughs



Cable Tray Installation Method Statement

Below is the detailed cable tray installation method statement not only for cable tray but also applicable for GI ladder and trunking for indoor and outdoor applications

[Contact Us](#)

Cable Tray Dimensions Guide: Standard Sizes, Tray

Explore standard sizes by tray type, understand width and depth limits, and see how to calculate and choose compliant cable tray sizes for real projects.

[Contact Us](#)



Cable Tray Spacing Standards for Installation and Safety

Proper installation can significantly reduce electromagnetic interference, prevent fire hazards, and improve overall efficiency. This article

[Contact Us](#)

B-Line series Cable Tray Design Considerations

For ladder or ventilated trough trays, the total sum of the cross-sectional areas of all the cables to be installed in the cable tray must be equal to or less than the allowable cable area for the tray width, as



A Guide to Installing and Supporting Electrical Cable Trays

A professional guide to installing electrical cable tray systems per NEC Article 392. Covers support, securing cables, and fill calculations.

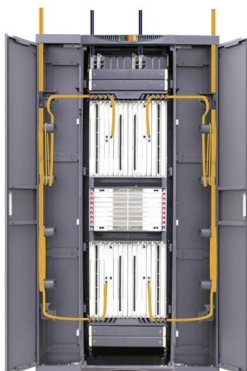
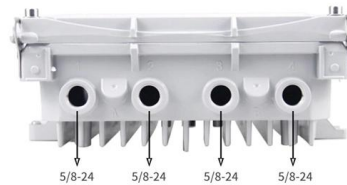
[Contact Us](#)



Master Cable Tray Installation: A Professional Step-by

Learn how to install cable trays for large-scale projects with our professional, step-by-step guide covering industry standards, safety protocols,

[Contact Us](#)



Cable Tray Questions , Cable Tray Institute

Are you aware of any industry standard that may mandate the use of cable trays under raised floors, particularly, power and signal cables?
Answer: We are not aware of such industry standard, but

[Contact Us](#)



Cable Tray Installation Guidelines , PDF , Galvanization

This document provides details on installing cable trays and their support systems. It includes diagrams showing how to mount cable trays on walls using pre

[Contact Us](#)



Cable Tray and Trunking Installation Method

This document provides a method statement for installing cable trays or trunking. It outlines responsibilities for the project manager, construction manager, site

[Contact Us](#)

Technical Guidelines for Cable Tray Installation and

1. Route Planning and Layout Principles
Coordinate with Building Structure: Cable tray routing should align with architectural design, avoiding unnecessary

[Contact Us](#)



Best Practice Guide to Cable Ladder and Cable Tray Systems

Introduction This publication is intended as a practical guide for the proper and safe* installation of cable ladder systems, cable tray systems, channel support systems and associated supports.

[Contact Us](#)



Best Practice Guide to Cable Ladder and Cable Tray Systems

Cable ladders and cable trays should be mounted far enough off the floor or roof to allow the cables to exit through the bottom of the cable ladder or cable tray.

[Contact Us](#)



Cable Tray / Trough Tray INSTALLATION

) To install: place 1 part of cover clamp around trough tray cover and tray assembly. Place 2nd part around opposite end of Trough Tray, align clamp holes and install hardware.

[Contact Us](#)

Cable Tray Dimensions and Specifications as per NEC

The entire amount of the cross-sectional areas for all of the single conductor cables that are going to be positioned in the cable tray needs to be



[Contact Us](#)

OEM/ODM
CUSTOMIZATION AVAILABLE



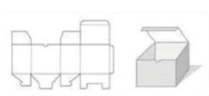
Full product customization



Structure customization



Brand customization



Packaging design

Complete cable tray manual for electrical engineers and

Complete cable tray manual for electrical engineers and designers (on photo: power cable management ladder tray systems assembled aluminum cable tray ladder

[Contact Us](#)



Method Statement installation of Cable Trays and Ladders

This method statement covers the site installation of the cable tray & ladders and the requirements of checks to be carried out.

[Contact Us](#)



Installation Of Cable In Cable Trays: NEC, Safety

Discussed are the installation in tray of single and multi-conductor insulated cables with design limitations, example calculations, equipment, and equipment usage

[Contact Us](#)

GUIDE CABLE TRAYS TECHNICAL

If it has excellent electrical continuity and is integrated in the installation's equipotential bonding system, a metal cable tray reduces the coupling's impact and thus contributes to good EMC of the electrical

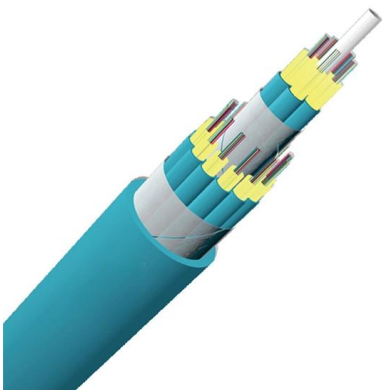
[Contact Us](#)



Cable Tray and Conduit Installation Method Statement

Step-by-step cable tray and conduit installation method with safety, quality and inspection procedures as per IEEE standards.

[Contact Us](#)





Guide to cable support systems

Therefore, it can generally be assumed that a system of, for example, 60 mm rail height per metre of cable tray or cable ladder will produce a value of 15 kg per 100 mm width.

[Contact Us](#)



METHOD STATEMENT FOR CABLE TRAY INSTALLATION

7.1.7 Install necessary fabricated supports for cable tray as per installation detail. All permanent materials (including fabricated supports), consumables, construction area and resources shall be

[Contact Us](#)

Trough Type Cable Tray Guide: Load, Installation & Benefits

A professional guide to trough type cable trays. Explore load capacity charts, installation guidelines, advantages over ladder type, and key selection criteria for your project.

[Contact Us](#)



Technical Specification for Cable tray installation and cable laying work

1. Scope :- This specification covers the following major activities; - Fabrication and installation of Mild Steel (MS) support structure for Galvanized Iron (GI) Cable tray. - Installation of perforated GI Cable

[Contact Us](#)



Cable Tray Technical Guide A practical guide to product selection and

Cable tray length is selected based on the load to be supported, the distance between the supports (also referred to as the span), and handling and installation constraints.

[Contact Us](#)



Contact Us

For datasheets, pricing, or custom fiber access solutions, please visit:
<https://frindel.es>