

Installation diagram of low-voltage secondary distribution box





Installation diagram of low-voltage secondary distribution box



MNS® Low Voltage Distribution Board and Power Cabinet

In designing the distribution board and power cabinet, ABB drew upon its wealth of experience with low-voltage switchgear and placed a strong emphasis on the product's ease of installation, operations,

[Contact Us](#)



Primary and secondary power distribution systems

Secondary selective service achieves similar results by using switches on secondary voltages rather than primary voltages. With secondary selective

System Arrangements

Typical equipment for this system arrangement is a single unit substation consisting of a fused primary switch, a transformer of sufficient size to supply the loads, and a low-voltage switchboard. This

[Contact Us](#)



Usage, Principle, And Classification of Low Voltage Distribution Box

Low-voltage distribution box is a device responsible for controlling, protecting, converting, and distributing electrical energy at the terminal end of the low-voltage power supply system. It is mainl

[Contact Us](#)



Installation and Low Voltage Switchgear Maintenance Manual MaxSG

MaxSG Low Voltage Switchgear General Instructions on and use as a guide during installation and initial operation. File these instructions with other in truction books, drawings and descriptive data of the

[Contact Us](#)



Basics in low voltage distribution equipment

Low voltage distribution equipment typically operates at less than 600 volts; in contrast, medium voltage equipment affords a wider range of 600 to 38,000 volts. This paper provides a basic overview of the

[Contact Us](#)



BioPreferred

I buy for the federal government Federal law, the Federal Acquisition Regulation, and Presidential Executive Orders direct federal agencies and their contractors to

[Contact Us](#)





Planning and Operation of Low Voltage Distribution

The characteristics, types, and topologies of LV distribution networks plus different aspects of operation and planning are investigated.

[Contact Us](#)



Example On How To Design a Low Voltage Switchboard

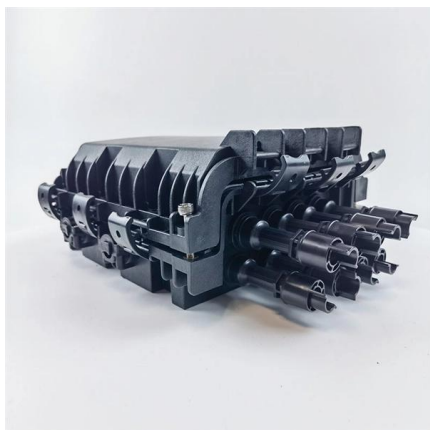
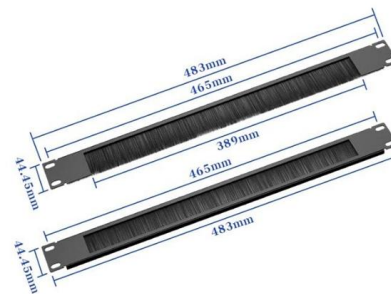
Let us suppose that realization of a main distribution low voltage switchboard is required, to be placed on the load side of a 2000kVA MV/LV

[Contact Us](#)

Distribution Automation Handbook

3.14 Primary Distribution Substations A primary distribution substation is the connection point of a distribution system to a transmission or a sub-transmission network. Outgoing feeders from a

[Contact Us](#)



Secondary Substation Installation and SUB-02-006 2. ISSUE RECORD

Where High/Low voltage Indoor Switchgear is utilised, it shall be installed in a suitable building with a controlled environment to ensure compliance with clause 2.1 of IEC 60694 for class "minus 5 indoor".

[Contact Us](#)



Medium voltage products Technical guide The MV/LV transformer

CEI EN 50532: Compact switchgear assembly for distribution stations nt V1: Syst CEI 64-8: User electrical installations with rated voltage not greater than 1000 V AC and 1500 V DC; Guide CEI 11 -

[Contact Us](#)



TECHNICAL SPECIFICATION FOR LT DISTRIBUTION BOX

General Technical Particulars for LT Distribution Boxes : - The L.T. Distribution Boxes should be of the dimensions as per the drawing & details in the table furnished.

[Contact Us](#)



Low-voltage network

A low-voltage network or secondary network is a part of electric power distribution which carries electric energy from distribution transformers to electricity meters of

[Contact Us](#)



A Complete Guide to LV Distribution Board , CHINT global

LV distribution boards, part of the electrical distribution system, securely distribute low-voltage power to facility circuits.

[Contact Us](#)

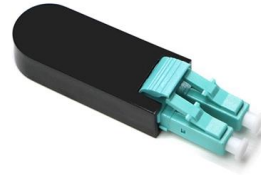




Low Voltage Distribution Operation & Maintenance Manual Panel Boards

All safety codes, safety standards and/or regulations must be strictly observed in the installation, operation and maintenance of this equipment. Only authorized personnel should be allowed to work

[Contact Us](#)



Low-voltage distribution networks

In densely-loaded areas, a standard size of distributor is laid to form a network, with (generally) one cable along each pavement and 4-way link boxes located in manholes at street

[Contact Us](#)

Primary and secondary power distribution systems (layouts explained)

secondary unit substation is a close-coupled assembly consisting of enclosed primary high voltage equipment, three-phase power transformers, and enclosed secondary low-voltage

[Contact Us](#)



Guide to Low-Voltage Distribution Systems

A low-voltage distribution system is the final stage of the electric grid. It is the infrastructure that moves electric power inside buildings and dwellings.

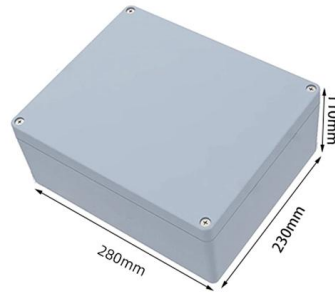
[Contact Us](#)



Low voltage power distribution system

Especially in construction electrical engineering, the installation of electrical systems has a great impact on the progress of the project and the

[Contact Us](#)



Low-Voltage Power Distribution and Electrical Installation

This comprehensive portfolio for low-voltage power distribution and electrical installation technology covers every requirement - from the switchboard to the socket outlet.

[Contact Us](#)

Composition and structure analysis of low voltage distribution box

A low voltage distribution box features robust enclosures, busbars, and protection devices to ensure safe, efficient power distribution in electrical systems.

[Contact Us](#)



Low-voltage distribution networks

The distribution is effectively carried out at medium voltage in a way, which again differs from standard European practices. The MV system is, in fact, a 3-phase 4-wire system from which single-phase

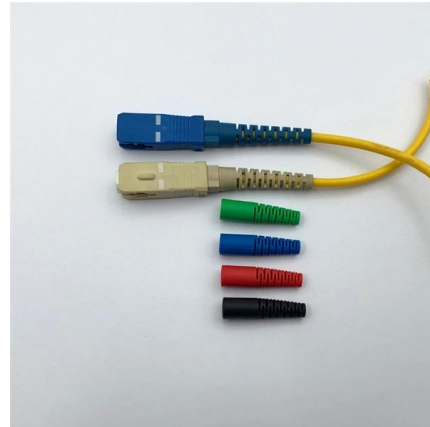
[Contact Us](#)



Secondary LV/MV distribution substations in a nutshell

The installation comprises secondary distribution substation at the point of entry, with MV cables to supply subsidiary

[Contact Us](#)



Extract from LV 10 · 10/2018

SIMARIS curves visualizes tripping characteristics and let-through current and let-through power characteristics of low-voltage protective equipment and fuses (IEC). SIMARIS curves is available

[Contact Us](#)

Contact Us

For datasheets, pricing, or custom fiber access solutions, please visit:
<https://frindel.es>