

# **Installation at the bend of the wire mesh cable tray**





## Overview

---

Depending on the type and version of mesh cable tray, as well as the corrosion protection used, the mesh cable tray systems can be ambient temperatures of - 20 °C to + 120 °C. Pensa launches its new installation guide which shows, step by step, how to install Rejiband Rapide. Completely adaptable, B-Line Flextray is designed to accommodate jobsite changes. For the best results, use a WB30BC Angular Blade Offset Bolt Cutter with 24" (600 mm) long handles.



## Installation at the bend of the wire mesh cable tray

---

### **CabloBend EZ**



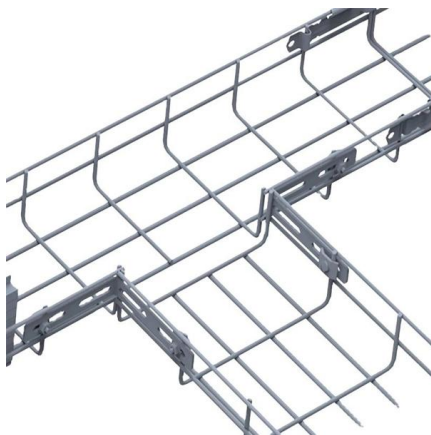
Features Adjustable mesh tray fitting. Easy-to-bend flex wires. The quickest up-and-down bends in the industry. Shrink your installation time to just

[Contact Us](#)

### **SS Perforated Galvanized Cable Tray 600mm With Wire Mesh And**

Tray Accessories Vichnet HDG galvanized Outdoor Cable Tray Wire Mesh Cabl Quick Details  
Place of Origin: Shanghai, China (Mainland)  
Brand Name: Yin An Model Number: CM100-50-3000-5-HDG

[Contact Us](#)



### **NEW REJIBAND MESH TRAY INSTALLATION GUIDE**

You can now download the new Installation Guide for Rejiband ® wire mesh cable tray: a new online resource to help installers, through illustrations,

[Contact Us](#)

### **Cablofil FASLOCKXLS6 316L Stainless Steel Wire Cable Tray Bend**

Overview Cablofil Fastclip Bend Connector is a stainless steel corner connector designed for rapid and secure joining of wire mesh cable trays. The horizontal hinged joint supports flexible routing during



### **Cable Tray Technical Guide A practical guide to product selection and**

Cable Tray Technical Guide A practical guide to product selection and installation This guide for engineers and installers has been developed by ABB as a practical reference regarding cable tray

[Contact Us](#)

### **90° Cable Tray Bend Installation Guide , PDF**

The document provides instructions for the installation of 90° short radius bends for wire mesh cable trays in various widths (4", 6", and 12"). It lists the required

[Contact Us](#)



### **Flextray installation guide**

Cut wires with B-Line Angular Bolt Cutter, bend to create a bend, tee, or reducer. Do not use center cut blades. For the best results, use a WB30BC Angular Blade Offset Bolt Cutter with 24" (600 mm) long

[Contact Us](#)





## Wire Mesh Cable Tray Installation Guide: How to complete cabling

By following these detailed steps, and specifically leveraging the advantages of quick couplers and on-site shaping, your Wire Mesh Cable Tray installation project will achieve maximum

[Contact Us](#)



## Cable Tray / Wire Mesh Basket Tray TMX-XX- HE90 INSTALLATION L

s to a length of 9/32" smaller than the width of the tray. Make s to a length of 9/32" smaller than the width of the tray. Be sure to keep the lowermost longitudinal wir

[Contact Us](#)

## How to Install Wire Mesh Cable Trays? , EAE Electric

How to Install Wire Mesh Cable Trays? Discover the ease of installation, flexibility, and durability of EAE Elektrik TLS Cable Basket!

[Contact Us](#)



## Mesh cable tray systems

easily fed in and out in various directions. The easily separable wires and the bending capacity of the mesh cable trays enable the. simple creation of bends, branches and exits. Four different mesh cable

[Contact Us](#)



## Wire Mesh Cable Tray

Wire Mesh Cable Tray Manufacture and Installation - Al Fazal Engineering Wire Mesh Cable Tray

[Contact Us](#)



## CabloBend EZ

Adjustable mesh tray fitting. Easy-to-bend flex wires. The quickest up-and-down bends in the industry. Shrink your installation time to just minutes per

[Contact Us](#)

## Wire Mesh Cable Tray

Wire mesh cable trays are more than simple cable supports--they are integral parts of a safe, efficient, and maintainable electrical system. By prioritizing quality materials, correct installation techniques,

[Contact Us](#)



## How to Install a Wire Mesh Basket or Cable Tray , CMW

Learn how to properly install a wire mesh basket tray or cable tray for effective cable management. Tips, tools, and advice from the experts at CMW.

[Contact Us](#)

## Cablofil FASLOCKSS6 316L Stainless Steel



## Wire Cable Tray Bend

Overview Cablofil Fastclip Small Bend Connector is a stainless steel corner connector designed for rapid and secure joining of wire mesh cable trays. The horizontal hinged joint supports flexible routing

[Contact Us](#)



## Wire Basket Overhead Cable Tray Routing System Application Guide

The Wire Basket Overhead Cable Tray Routing System is composed of pathways, splices, mounting brackets, and accessories that allow the system to be configured for a wide range of applications and

[Contact Us](#)

## Vertical cable tray

Wire mesh cable trays are constructed from interwoven steel or galvanized steel wires, forming a flexible yet supportive lattice structure. This open design promotes superior ventilation, helping dissipate

[Contact Us](#)



## Assembly Guide

The assembly guide below will help the cable tray installer make the bends and others without difficulty even he had never installed wire mesh cable trays before.

[Contact Us](#)



**Cablofil FASLOCKSDC Hot Dip Galvanised Steel Wire Cable Tray Bend**

Overview Cablofil Fastclip Small Bend Connector is a steel corner connector designed for rapid and secure joining of wire mesh cable trays. The horizontal hinged joint supports flexible routing during

[Contact Us](#)



**Cable Tray manufacturer in Pakistan , At Alfazal Industry**

Alfazal Engineering Industry, Cable Tray manufacturer in Pakistan, provides superior cable trays. Their expertly designed cable management.

[Contact Us](#)

**Cablofil FASLOCKXLDC Hot Dip Galvanised Steel Wire Cable Tray Bend**

Hot dip galvanised steel bend connector for directional changes in wire mesh cable trays. Horizontal hinged joint supports flexible routing for 300-600 mm trays with corrosion resistant, halogen free

[Contact Us](#)



**Cable tray**

Lighter cable trays are more appropriate in situations where a great number of small cables are used, such as for telephone or computer network cables. These trays

[Contact Us](#)





Atkore's US Tray was established in 2012, as an American manufacturer of made-to-order cable trays that are built per NEMA standards and certified by UL. We offer

[Contact Us](#)



### Cable Tray Technical Guide A practical guide to product selection and

A practical guide to product selection and installation This guide for engineers and installers has been developed by ABB as a practical reference regarding cable tray characteristics, installation, and

[Contact Us](#)

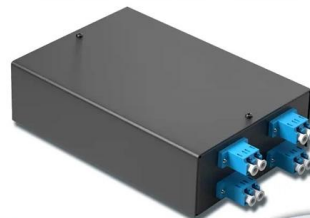
### Cablofil FASLOCKSGS Pre-Galvanised Steel Wire Cable Tray Bend

Overview Cablofil Fastclip Small Bend Connector is a steel corner connector designed for rapid and secure joining of wire mesh cable trays. The horizontal hinged joint supports flexible routing during

[Contact Us](#)

4-port 8-core LC wall-mounted fiber terminal box (empty frame)

Surface painted Scientific plate fiber Cold-rolled steel plate



Lifetime quality assurance

Free shipping

Customizable for telecommunications

### #wiremeshcabletray #datacenter #datacentercabletray

Important Installation Tips Maintain Bend Radius Ensure sufficient cable bending radius is maintained while routing cables through the TEE junction.

[Contact Us](#)

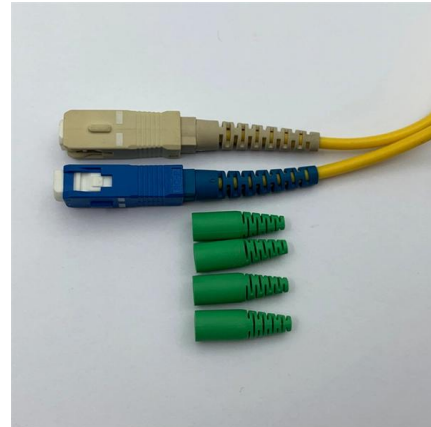




## Wire mesh cable tray manufacturers in athipet ambattur

All Companies and suppliers for wire-mesh-cable-tray-manufacturers-in-athipet-ambattur-chennai  
Find wholesalers and contact them directly  
Leading B2B marketplace Find companies now!

[Contact Us](#)



## Contact Us

---

For datasheets, pricing, or custom fiber access solutions, please visit:  
<https://frindel.es>