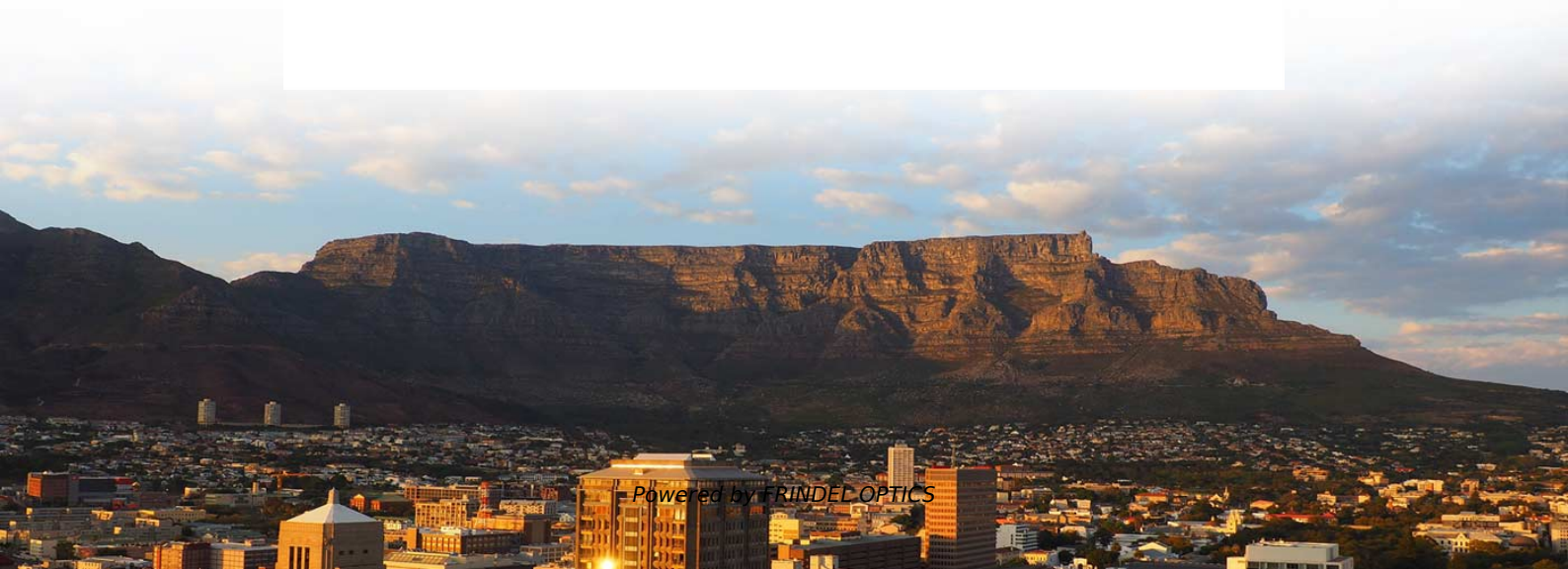


# **Inspection of outdoor floor-mounted electrical distribution box in Andorra**





## Inspection of outdoor floor-mounted electrical distribution box in A

---



### Specifications for Electrical Underground Distribution Systems from

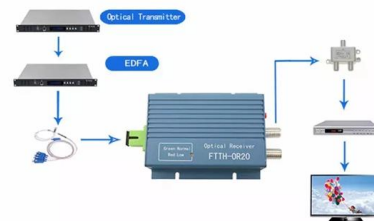
Specifications for Electrical Underground Distribution Systems from Pad Mounted Transformation, Apartments & Condominiums Specification DDS-3 UG Revision 13, November 2023

[Contact Us](#)

### An Introduction to Exterior Electrical Power Distribution

The main electric supply station is the installation/utility interface point where further transmission, distribution and utilization of electrical power, the monitoring and control of such power or equipment

[Contact Us](#)



### DB Box Inspection Checklist , PDF

The document provides a 16 item checklist for inspecting a main distribution board or panel board.

[Contact Us](#)



### electrical distribution box preventive maintenance check list

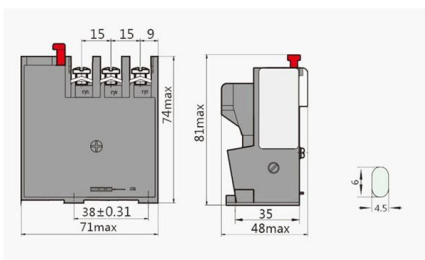
electrical distribution box preventive maintenance check list 1. Visual Inspection  
Check for signs of corrosion or rust. Inspect for any physical damage to the enclosure. Ensure that all labels and



**MNS® Low Voltage Distribution Board and Power Cabinet**

The boxes containing the equipment should be opened for inspection by the installer in the presence of the vendor, builder, and supervisory institute. The inspection should be documented.

[Contact Us](#)



**Electrical Installations**

In addition to formal periodic testing and inspection, routine checks of the electrical installation should be undertaken between these periods. These do not need to be carried out by an electrically skilled

[Contact Us](#)



WebiTelecomms Cabling

**Which electrical distribution box should you choose for a**

Which electrical distribution box should you choose for a large event? A guide to efficient power distribution In the events industry, ensuring the reliability of the

[Contact Us](#)

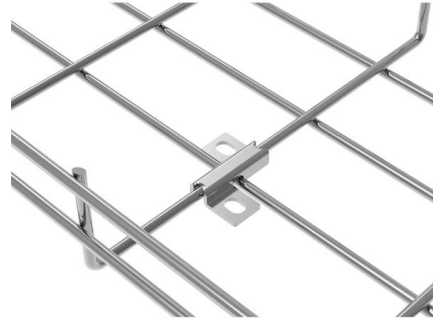




### **NEN 3140 inspection of portable distribution boxes: what to look out**

How do you inspect temporary power distribution boxes according to NEN 3140? Read about the visual inspection, measurement of the protective conductor, Type A RCD, and the 30 mA tripping current.

[Contact Us](#)



### **Microsoft Word**

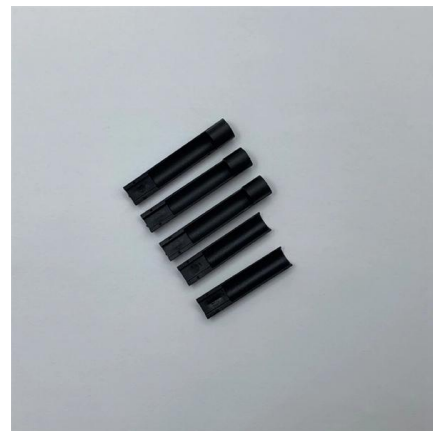
We specialize in the fields of electrical systems, industrial data communications, telecommunications, automation and control, mechanical engineering, chemical and civil engineering, and are continually

[Contact Us](#)

### **Electrical Installation Condition Reporting**

The main purpose of periodic inspection and testing is to detect so far as is reasonably practicable, and to report on, any factors impairing or likely to impair the safety of an electrical installation.

[Contact Us](#)



### **EXHIBIT C**

FLOOR PLANS ARE DIAGRAMMATIC. CONTRACTOR SHALL COORDINATE EXACT LOCATIONS WITH ARCHITECTURAL DRAWINGS AND FIELD DETERMINE EXACT CONDUIT, PULL BOX,

[Contact Us](#)



## Floor-mounted electrical enclosure, Floor-mounted fuse

Find your floor-mounted electrical enclosure easily amongst the 21 products from the leading brands (HLC, Keanda, CONNOTECH, ) on DirectIndustry, the industry

[Contact Us](#)



## Floor Boxes/ Sockets outdoor (IP67)

Here you will find floor sockets, floor tanks and drop-in distributors for outdoor installation (IP67). Examples of applications are: Yards, outdoor facilities, gardens, car parks, marketplaces, port

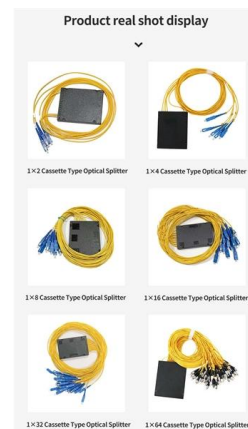
[Contact Us](#)



## ELECTRICITY SUPPLY APPLICATION HANDBOOK

To generate, transmit, distribute and sell energy to consumer throughout Peninsular Malaysia. To plan, install, operate and maintain electricity installation for the generation, transmission and distribution of

[Contact Us](#)



## Your expert guide to floor box installation

What is a floor box? A floor box is a flush-mounted electrical enclosure installed within the floor, providing access to power sockets, data ports, or AV connections. It's commonly used in commercial

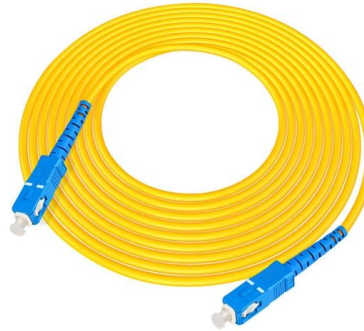
[Contact Us](#)



## Floor boxes

Floor box provides adaptable power and data distribution in raised floors. The system ensures a fast and simple installation. Designed to support Cat 6 structured cabling systems. Lid &

[Contact Us](#)



## Inspecting the Main Electrical Panelboard During a

Learn how to inspect the electric service panelboard and common electrical components in this inspection article provided by InterNACHI®.

[Contact Us](#)

## 2013 48 Autumn Wiring Matters

TP& N distribution boards there used to be a regulation in BS 7671 that recommended a mounting height not exceeding 2250mm to the top and not less than 1400mm to the underside of a distribution board.

[Contact Us](#)



## ADU

Outdoor LV Distribution Boards (ADU) works for Low Voltage distribution networks in public areas. With incoming and outgoing connections from-to grid, as well as

[Contact Us](#)



## electrical distribution box preventive maintenance check list

Inspect for any physical damage to the enclosure. Ensure that all labels and warning signs are legible. Examine for any signs of overheating or arcing. Verify that the box is securely mounted and that

[Contact Us](#)



## Floor boxes

For optimum energy distribution, correct mechanisation and management of different installation in the workplace, Simon has designed and created extremely

[Contact Us](#)



## Distribution Boards

Kabeldon distribution boards are specifically designed for outdoor installations and they come as pre-assembled systems, ready to install. They combine the advantages of the flexible IP-system with

[Contact Us](#)



## Requirements And Specifications For Installation Of

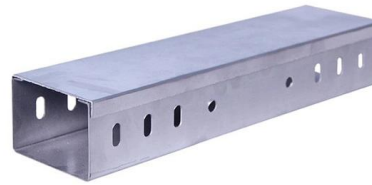
In flammable and explosive environments, explosion-proof distribution boxes should be selected and explosion-proof treatment should be carried out.

[Contact Us](#)



### DOITool 2 Way Distribution Protection Box

The doitool power distribution junction box 2-way distribution protection box electrical case (2 way) is designed for efficient electrical wiring management. Measuring 4.72\*3.58\*2.17in, this compact



[Contact Us](#)



### Distribution Board Inspection Checklist

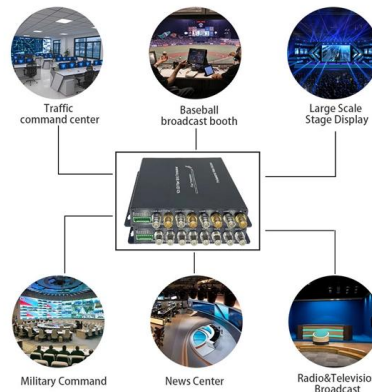
This document outlines inspection and testing procedures for distribution boards and feeder pillars. It lists over 20 items to be visually and mechanically checked,

[Contact Us](#)

### Electrical Distribution Board Inspection Form

Electrical Distribution Board Inspection Form (1) This document is an electrical distribution board inspection form used to inspect equipment being brought onto a

[Contact Us](#)



### MNS® Low Voltage Distribution Board and Power Cabinet

Features ABB distribution board and power Cabinet conform to GB7251.3-2006. Product includes distribution board, lighting control panel, metering panel, and power cabinet., They are suitable for

[Contact Us](#)



## Contact Us

---

For datasheets, pricing, or custom fiber access solutions, please visit:  
<https://frindel.es>