

Inspection diagram of the PC end face of the ceramic ferrule





Inspection diagram of the PC end face of the ceramic ferrule



Fiber Connector types characteristics , Kingfisher

Application note: Overview of fiber optic connector theory, common connector types, typical characteristics, problems and solutions.

[Contact Us](#)

How to improve the inspection results of your fiber

Connectors are most commonly comprised of a spring-loaded ceramic ferrule, which aligns two mating connectors in a circuit. However, before they can be used in

[Contact Us](#)



Ferrule and endface Geometry

ers of ferrules is possible. Therefore, it is the interferometer, which is the most accurate device to control optical elements. Apart from it, both an automatic glue dispenser and a machine designed for

[Contact Us](#)

A Study of End Face Geometry and Visual Inspection of a Very Small

This paper studies the end face geometry and visual quality of a multi-fiber VSFF connector, the MMC connector with TMT ferrule, using traditional parameters defined in IEC standards. Data from a wide



MEASUREMENT OF END FACE GEOMETRY ON FIBER OPTIC

There are two types of end faces for the ferrule (either domed or flat) and two types of polishes (either physical contact, PC, or non-contact, NC) addressed. This enclosure addresses the ferrules with a

[Contact Us](#)



MPO Best Practices

d end-face fibers. According to IEC 61754-7, the unpolished (flat) area of an angle-polished ferrule (single-mode) should not exceed 0.8 mm. Measuring this area can be challenging, and it is not

[Contact Us](#)



Fiber End Face Interferometer

Thorlabs' GL16 End Face Interferometer measures and images the end face geometry of single- and multi-fiber connectors. A non-contact technique called scanning white-light interferometry (SWLI)

[Contact Us](#)





End-face geometry inspection

The quality of the connector end face is closely related to its design and manufacturing process. Therefore, we can improve and perfect the process based on the results of three-dimensional

[Contact Us](#)



Ferrule Endface Geometry

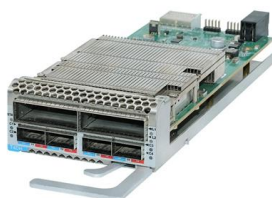
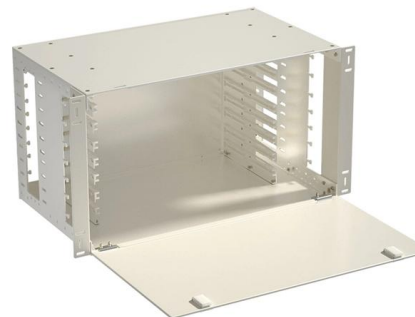
In the fiber optic world, Endface Geometry is a widely accepted term that represents the geometry of polished fiber optic connector ferrule end faces. Endface Geometry features of the

[Contact Us](#)

Polishing Fiber Optic Connectors Explained

Rubber Pads Rubber pads are required for generating the Radius of singlefiber ceramic ferrules. The magnitude of the radius generated is determined

[Contact Us](#)



Inspection and Cleaning Procedures for Fiber-Optic

Introduction This document describes inspection and cleaning processes for fiber optic connections. It is important that every fiber connector be

[Contact Us](#)



Ceramic Ferrule: Precision Alignment for Fiber Optic Connectors

Ceramic ferrules used with optical fiber connectors must be of the highest quality, which requires an extensive manufacturing process that yields ceramics with excellent rigidity, precision,

[Contact Us](#)



A Study of End Face Geometry and Visual Inspection of a Very Small

End face geometry measurements including minus coplanarity, ferrule surface radii, fiber tip spherical radii, ferrule surface angles, and fiber heights are presented along with corresponding optical loss

[Contact Us](#)

Ceramic Ferrules for Fiber Optic Connectors

Ceramic Ferrules for Fiber Optic Connectors ceramic ferrule quality is of utmost importance to the performance of fiber optic connectors, ensuring minimal

[Contact Us](#)



Ferrule Installation Guidelines , PDF , Pipe (Fluid

1. Fabrication deviations in ferrule installation may lead to costly repairs, so careful inspection and trial fitting is important. 2. Trial fitting of ferrules should be done on

[Contact Us](#)



Guidance Document

Guidance for Interferometer Inspection of Fiber Optic Ferrule, Fiber End Face Measurements, Ferrules with Domed End Faces

[Contact Us](#)



The Importance of Optical Fiber Connector End-Face

Achieving high-quality end-face geometry requires precise manufacturing and inspection processes. Polishing processes are critical to achieving desired ROC,

[Contact Us](#)



Stainless Steel and Ceramic Fiber Optic Ferrules

See Figure 1.2 for a depiction of the ferrule and bore size dimensions. SFLC, CFLC, CFX, and CFLF ferrules have PC-polished end faces and are not suitable for APC polishes. These ferrules can be

[Contact Us](#)



Physical Contact in Fiber Connector Ferrules

PC, or Physical Contact, was the first widely adopted ferrule end-face geometry. Although the mating surface appears flat, PC connectors use a slightly

[Contact Us](#)



How can you distinguish between APC and PC ceramic

In the field of optical communication and fiber optic connectors, ceramic ferrules are key components that determine the stability and insertion loss performance of

[Contact Us](#)



Fiber Optic Connector End Face Quality and Maintenance

Always inspect both connectors before mating. Mating dirty connectors will: Cross contaminate both connectors Hard contaminates will scratch and pit the ferrule end face Inspecting

[Contact Us](#)



Stainless Steel and Ceramic Fiber Optic Ferrules

Figure 1.2 The cross section is different between the bare stainless steel and ceramic ferrules, and the flanged ceramic ferrules. Each ferrule is defined by bore size, length, and outer diameter.

[Contact Us](#)



Schematic view of ferrule end faces with adhering

Chapter 5 treats the end face damage phenomenon and the fiber fuse occurred in the single-mode fiber-optic connectors.

[Contact Us](#)





Fiber Optic Connectors

To minimize losses associated with the mated connector interface, it is imperative that connectors provide accurate fiber alignment (core-to-core alignment of the fiber media) and that the ferrule

[Contact Us](#)



Your Source for Hygiene Optical Interconnect Solutions Design o Test

IEC 61300-3-35: Fiber optic interconnecting devices and passive components - Basic test and measurement procedures - Part 3-35: Examinations and measurements - Fiber optic connector end

[Contact Us](#)

Edition 1.0 2014-07 INTERNATIONAL STANDARD

Fibre optic interconnecting devices and passive components - Basic test and measurement procedures - Part 3-47: Examinations and measurements - End face geometry of PC/APC spherically polished

[Contact Us](#)



Connector Inspection and Maintenance

To properly inspect the connector end-face, it is recommended to use a microscope that is specially designed for the fiber-optic connector end-face. There are many types of inspection tools on the

[Contact Us](#)



Transceiver Fiber Inspection and Cleaning

The Tx side of a single-mode transceiver is generally, but not exclusively, a Ferrule or Fiber Stub Interface, which is very similar to a bulkhead connector. When viewed with a video microscope, a

[Contact Us](#)



Tech Note 20 Fiber Preparation and Fiber Connectors

The ST connector is used extensively both in the field and in indoor fiber optic LAN applications. Its high-precision, ceramic ferrule allows its use with both multimode and single-mode fibers. The bayonet

[Contact Us](#)

Fiber Optic Connectors - Standards to Ensure Physical

In real applications, the fiber optic connectors must be robust, which means that the precise alignment and physical contact should be kept in rigorous

[Contact Us](#)



Contact Us

For datasheets, pricing, or custom fiber access solutions, please visit:
<https://frindel.es>