

# **Industrial-grade switch parameters**





## Overview

---

Key Indicators: Industrial switches need to pass international standard certifications such as IEC 61850-3 and IEEE 1613, with a wide operating temperature range of -40°C to 75°C, an IP67 protection rating, and an electromagnetic compatibility (EMC) level of  $\geq 4$ . This guide will help you select the right industrial switch by focusing on three critical parameters: Along the way, we'll also touch on reliability, environment. Industrial Ethernet switches Ethernet devices designed for harsh industrial environments deployment that are prone to shocks, vibrations, and extreme temperatures. This paper explains the basics of PoE, explores how the industrial sector can benefit from PoE technology, and describes the PoE capabilities that Cisco® industrial switches offer and the tools available for proper design, monitoring, and deployment. They distribute data to defined addressees and organize the data traffic, which in turn significantly increases. However, faced with hundreds of brands and thousands of switch models, enterprises often find themselves in a dilemma of.



## Industrial-grade switch parameters

---

### Managing Networks , Why Do I Need an Industrial



I could run down to the local box store or internet marketplace and buy a 5-port switch for less than 20 dollars, or invest in an industrial switch for

[Contact Us](#)

### Industrial Ethernet Switches , Industrial Network Switch

Industrial-grade Ethernet Switches are specifically designed to connect devices in network environments that are subject to extreme operating temperatures of

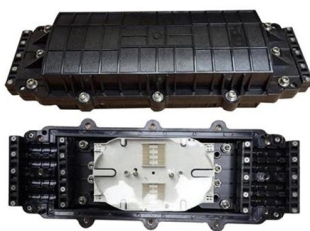
[Contact Us](#)



### FS Community

Hier sollte eine Beschreibung angezeigt werden, diese Seite lässt dies jedoch nicht zu.

[Contact Us](#)



### Industrial Ethernet Switches for Process Automation

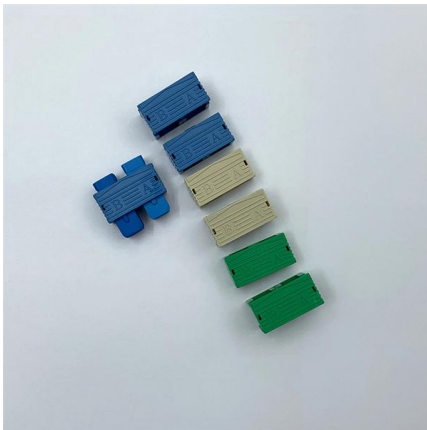
Industrial Ethernet switches are active network components and make it possible to set up an industrial communication network in electrical or optical line, star and ring topologies.



### Why choose an industrial-grade network switch? , Impulse Embedded

Impulse designs, builds and supports industrial IoT solutions, and can help you choose an industrial-grade network switch for your next industrial networking application. For more information

[Contact Us](#)



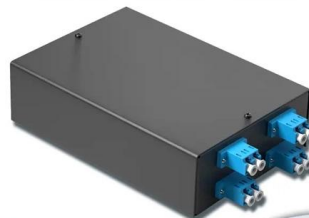
### How to Select Industrial-Grade Switches Based on Port

Learn how to choose industrial-grade switches by port count, PoE budget and data speed for reliable and efficient industrial networking.

[Contact Us](#)

4-port 8-core LC wall-mounted fiber terminal box (empty frame)

Surface painted    Scientific plate fiber    Cold-rolled steel plate



Lifetime quality assurance

Free shipping

Customizable for telecommunications

### Temperature range and application scenarios of industrial switches

Environmental monitoring: Industrial switches are also used to connect environmental monitoring sensors, such as temperature and humidity sensors and gas sensors. It can monitor

[Contact Us](#)





## How Industrial-Grade Switches Enhance Safety and

The Critical Role of Switches in Industrial Settings  
Industrial environments demand high-performance, reliable, and durable switches to

[Contact Us](#)



## Power Supply Requirements for Industrial Switches

Industrial-grade switches serve as the backbone of modern industrial networks, ensuring reliable connectivity and optimal performance across various

[Contact Us](#)

## The difference between industrial-grade switches and ordinary switches

In addition, industrial-grade switches also support ring redundancy technology, which can automatically switch to a backup link when a part of the network fails, ensuring network availability. These features

[Contact Us](#)



## Industrial Switch Selection Guide: Applicable to Different Industrial

In the field of IIoT, industrial switches are key network devices that connect various industrial equipment, sensors, and control systems. Their selection directly affects the stability and reliability of the entire

[Contact Us](#)



## The difference between industrial-grade switches and

Industrial-grade switches and enterprise-class switches exhibit notable differences in design philosophy, structural design and durability, data transmission

[Contact Us](#)



## How to pick the right Industrial Ethernet Switch for critical networks

Featured industrial-grade reliability, network redundancy, strengthened security, and easy management gives you the flexibility to build powerful and secure networks even in harsh environments.

[Contact Us](#)

## Industrial Ethernet Switches

Provides an overview of deploying PoE in an industrial environment, exploring how this sector can benefit from PoE technology and describing the

[Contact Us](#)



## Industrial Ethernet Switch Selection Guide

Learn how to choose an industrial Ethernet switch for automation systems, Profinet networks, and reliable industrial PCBA deployment.

[Contact Us](#)

## Industrial vs Normal Switch: What's the Difference?



Confused about industrial vs normal switches? Compare their features, performance, and specifications - click here for the full analysis.

[Contact Us](#)



### **Industrial Ethernet Switches: Benefits, Applications**

Discover what industrial grade Ethernet switches are, their unique features, real-world applications, key differences from regular switches, and

[Contact Us](#)

### **Guide to implementing Industrial Grade Switches**

In this blog post, we will walk you through the key steps and considerations involved in successfully implementing industrial grade switches to

[Contact Us](#)



### **What types of industrial-grade switches are available?**

Industrial-grade switches are specifically designed for demanding environments, offering features that ensure reliability, security, and longevity in harsh conditions.

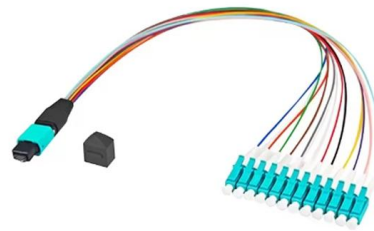
[Contact Us](#)



## The difference between industrial-grade switches and enterprise-grade

Industrial-grade switches and enterprise-class switches exhibit notable differences in design philosophy, structural design and durability, data transmission performance and redundancy, anti-interference

[Contact Us](#)



## A Guide to Picking the Right Industrial Ethernet Switch

Discover the essential aspects of choosing the right Industrial Ethernet Switch. Explore network requirements, key features, and more for optimal performance.

[Contact Us](#)

## PoE Switch Selection and Deployment in Industrial Automation: A

This article systematically analyzes the selection criteria and deployment key points for industrial-grade PoE switches, providing a comprehensive reference for industrial automation

[Contact Us](#)



## Rugged Ethernet Switches: The Ultimate Guide to Industrial-Grade

Rugged ethernet switches are essential for harsh industrial environments where standard networking equipment fails. These hardened devices provide reliable connectivity in

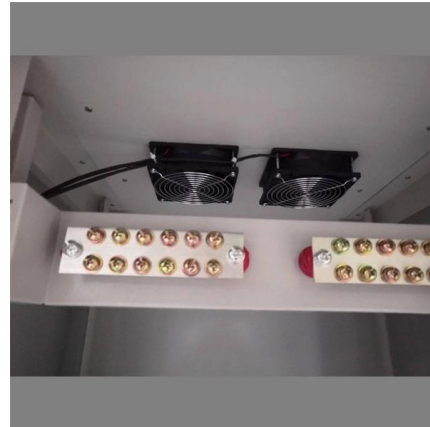
[Contact Us](#)



## Every Switch Type You Need to Know for Industrial

7 Common Industrial Switch Types in Electronics  
Switches come in a variety of shapes, sizes, and current ratings. An industrial-grade switch can

[Contact Us](#)



## In-Depth Guide to Industrial Switch Selection

Key Indicators: Industrial switches need to pass international standard certifications such as IEC 61850-3 and IEEE 1613, with a wide operating temperature range of -40°C to 75°C, an IP67 protection

[Contact Us](#)

## Contact Us

---

For datasheets, pricing, or custom fiber access solutions, please visit:  
<https://frindel.es>