

Industrial Switch TXRX Interface





Industrial Switch TXRX Interface



FAQ-What Does T/FX/TX/SX/LX/ZX in the Ethernet Interface Type Stand For

T/TX indicates an electrical interface, and FX/SX/LX/ZX indicates an optical interface. Details are listed in the following table: Table 2-2 Common Ethernet physical-layer standards

[Contact Us](#)

Industrial Ethernet Switches , Phoenix Contact

Industrial unmanaged switches from Phoenix Contact feature variable numbers of ports and a narrow design. We provide unmanaged switches with a variety of

[Contact Us](#)



Industrial Ethernet Switches - Simple and effective

In order to harmonise the different requirements of communication participants in an industrial network, managed switches from Weidmüller have extensive control

[Contact Us](#)

Understanding RX TX pinout DB9 connections: A

When working with devices other than the ones mentioned above, it is crucial to consult the device's documentation or user manual to identify the RX TX pinout



Overcoming Design Challenges

This posed difficulties for designers confirming if existing designs will work for high performance timing-sensitive interfaces with more complex requirements, such as RGMII.

[Contact Us](#)



Ethernet: understanding pin out patterns Tx+ / Tx

The part I'm having difficulty understanding is when he starts to talk about "Tx+ / Tx- / Rx+ / Rx-". I was wondering if anyone knew what the "+"s and "-"s" mean and

[Contact Us](#)



Products and solutions for Medical Ultrasound

HIGH-VOLTAGE MULTIPLEXER ST medical ultrasound imaging IC solutions include the highly integrated STHV64SW 64-channel high-voltage analog independent switches. These low harmonic

[Contact Us](#)





Switch Ethernet , Kontron

Kontron provides industrial TSN Network interface cards, Ethernet switching devices and fully integrated TSN solutions. With long experience in telecom and industrial Ethernet technology, Kontron offers

[Contact Us](#)



Using UHF Transceiver Internal RX/TX Switch

For ideal performance, the switch's attenuation must be very low and the isolation between RX/TX paths must be very high. The following paragraphs provide a step-by-step guide to using the internal

[Contact Us](#)

High-Voltage TX/RX Switches for Efficient Sensor Interfaces Across

High-voltage (HV) transmit/receive (TX/RX) switches are pivotal components in systems requiring efficient control of signal flow between high-power transmitters and sensitive receivers, particularly in



[Contact Us](#)



Ethernet Cable Pinout: TX RX Wiring Diagram Guide

Ethernet Cable Pinout - TX RX In the vast world of digital communication, there exists an intricate web of connections that enable seamless data transfer. Within

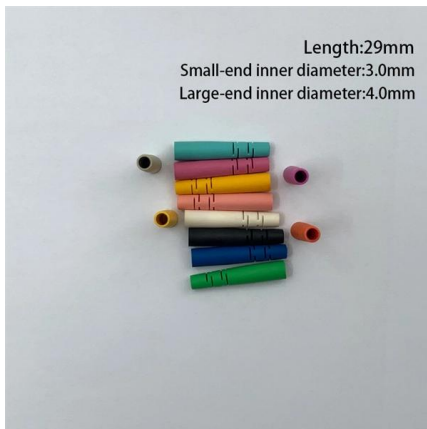
[Contact Us](#)

Industrial Ethernet Rail Switch 2 RS2-TX



The Rail Switch modules support switched ETHERNET networks in accordance with IEEE standard 802.3 using copper technology. The switch modules are plugged onto the standard bar.

[Contact Us](#)



Crossover Cabling

It is often said that crossover cables 'reverse the transmit and receive signals' compared to straight through cables. However I am yet to see an actual

[Contact Us](#)

What are TX and RX relative to?

This is incorrect. The standard specifies DTE and DCE (the two things talking to each other), and TX/RX are specified from the perspective of one of

[Contact Us](#)



Supply-Inverted Bipolar Pulser and Tx/Rx Switch for CMUTs Above

An integrated supply-inverting HV pulser with Tx/Rx switch is presented in a 0.18- μm 60 V HV-CMOS process to interface with CMUTs in ultrasound systems. The presented circuit overcomes fabrication

[Contact Us](#)

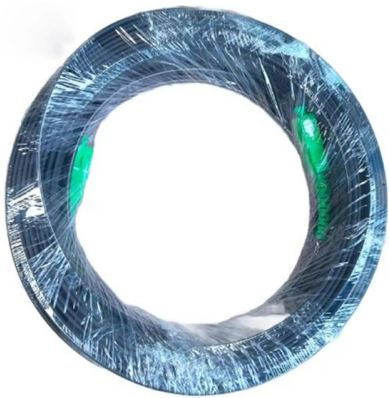




Automatic Transverter Interface

Automated Transverter Interface for HF Radios
The small box pictured here contains a PC board that handles all the complex switching of TX, RX and PTT transverter

[Contact Us](#)



Moxa IM-4TX

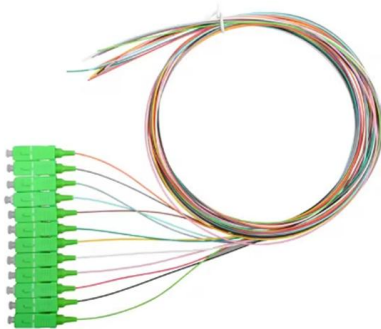
Choose from two 2-port Gigabit modules with copper or fiber optic connectors, and eight 4-port Fast Ethernet modules with copper or fiber optic (SC/ST) connectors.

[Contact Us](#)

Industrial Ethernet Switches

Modernize your operations with Cisco Industrial Ethernet switches: Increase productivity, boost security, and empower industrial AI.

[Contact Us](#)



Ethernet RX and TX connections

Is there some standard how the RX and TX cable pairs in a device are connected to a RJ45 ethernet jack? Clearly I cannot just connect the TX pair of device A with the TX pair of device

[Contact Us](#)



Integrated 5-Port 10/100-Managed Ethernet Switch with Gigabit GMII

The first mode is as a four-port standalone switch and the second is as a five-port switch with fifth port that is provided through a Gigabit media independent interface that supports GMII, RGMII, MII, and

[Contact Us](#)



RUGGEDCOM RX1400 Brochure

The RUGGEDCOM RX1400, thanks to its compact form factor and multi-function capability, offers a cost saving solution for large scale deployments by avoiding the need for multi-device solutions to achieve

[Contact Us](#)



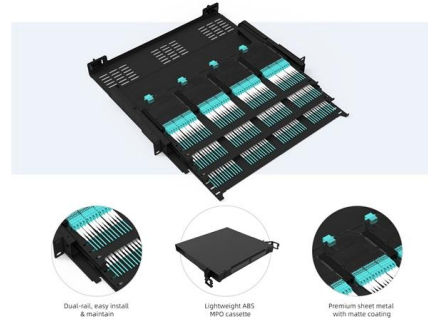
A RECONFIGURABLE SMART SENSOR INTERFACE FOR INDUSTRIAL

Abstract The Reconfigurable Smart Sensor Interface for Industrial Wireless Sensor Networks (WSN) is a comprehensive project utilizing Arduino microcontrollers at the transmitter and receiver. The

[Contact Us](#)

Pre-Terminated Patch Panel

- Standard 19" width
- Max 144 fibers in 1U
- Ultra-High Density Ready



High-Voltage TX/RX Switches for Efficient Sensor Interfaces Across

By bridging the gap between academic research and industrial practice, this review aims to provide valuable insights for circuit designers, researchers, and industry professionals working on next

[Contact Us](#)



Clarification on Differential Signaling: Polarity and Tx/Rx Swap

3 This is a general inquiry regarding differential signaling in common high-speed interfaces. Specifically, I have observed that Ethernet PHYs and USB hub ICs often include features

[Contact Us](#)



How do Tx / Rx cable pairs work in an Ethernet cable?

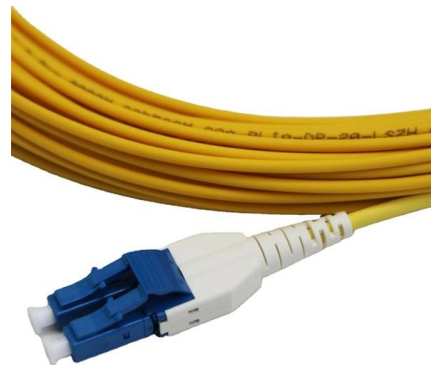
How do Tx / Rx cable pairs work in an Ethernet cable? Ask Question Asked 13 years, 11 months ago Modified 11 years, 11 months ago

[Contact Us](#)

tx/rx which direction : r/networking

TX/RX buffers are pretty straightforward compared to writing and applying an ACL, though. ACL Inbound vs ACL outbound gets to be really complicated unless you stop to think about it.

[Contact Us](#)



Hirschmann MM3-2FXM2/2TX1? Industrial Ethernet

The ?Hirschmann MM3-2FXM2/2TX1? is a rugged industrial Ethernet switch module designed for mission-critical network infrastructure in harsh environments.

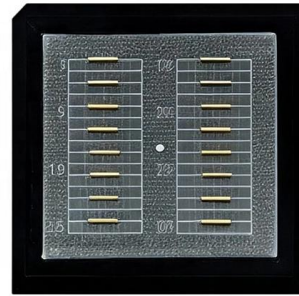
[Contact Us](#)



Industrial Ethernet Switches

Built for secure industrial automation and a wide range of use cases, these modular switches with PoE options support advanced resiliency protocols and network

[Contact Us](#)



Managed Industrial Ethernet Switches

Switches are active network components that support the structuring of an industrial communication network into electrical or optical line, star and ring structures.

[Contact Us](#)

Contact Us

For datasheets, pricing, or custom fiber access solutions, please visit:
<https://frindel.es>