

Industrial Switch Purchasing Guide

Powerful manufacturers · 20+ years of experience · Support customization

For more product types, please contact customer service>>>

Customizable [Welcome to contact us](#)
[Send inquiry](#) [Chat now](#)





Overview

Industrial Ethernet Switch Buyer's Guide 2026 — this comprehensive guide provides engineers and system integrators with practical, data-driven insights into industrial networking equipment procurement. In intelligent manufacturing, industrial networks have become the "digital arteries" supporting the stable operation of production systems. According to the 2024 Hourly Cost of Downtime Survey by research firm ITIC, a single hour of unplanned downtime now costs upwards of \$300,000 for over 90% of mid-size and large enterprises. When the penalty for an idle production line is that steep, "saving" \$150 on an underspecified.



Industrial Switch Purchasing Guide



Industrial Ethernet Switch Buyer's Guide: 12 Specs That Actually Matter

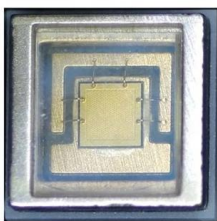
A spec-by-spec guide to choosing industrial ethernet switches that survive harsh environments. For OEM engineers and system integrators specifying food, pharma, and factory automation networks.

[Contact Us](#)

Choosing Industrial Switches for 2025? What Really

An industrial switch is engineered from the ground up for reliability in environments that would quickly disable a standard office switch. Think of

[Contact Us](#)



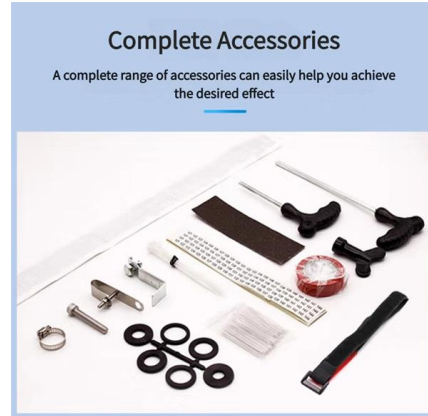
Industrial Ethernet Switches: A Guide to Hardened

A complete guide to industrial Ethernet switches--certifications, managed vs. unmanaged, and Cisco solutions for Industry 4.0 networks.

Industrial Ethernet Switch Buying Guide: 4 Essentials

This guide discusses four essentials to help you choose an Industrial Ethernet Switch that holds your infrastructure together in harsh, mission-critical

[Contact Us](#)



Complete Accessories

A complete range of accessories can easily help you achieve the desired effect



Every Switch Type You Need to Know for Industrial

7 Common Industrial Switch Types in Electronics Switches come in a variety of shapes, sizes, and current ratings. An industrial-grade switch can

[Contact Us](#)

How to Install Industrial Switches: A Comprehensive Guide

Industrial switches are vital for robust network connectivity in industrial environments. Proper installation ensures optimal performance and network efficiency. This

[Contact Us](#)

GAIN AN IN - DEPTH UNDERSTANDING OF



- ① LED DISPLAY PANEL
- ② PROTECTOR OPERATION BUTTONS
- ③ NEUTRAL WIRE OUTPUT TERMINAL
- ④ LIVE WIRE OUTPUT TERMINAL
- ⑤ WORKING CURRENT AND VOLTAGE INSTRUCTIONS
- ⑥ FLAME - RETARDANT SHELL

A Quick Guide to Industrial Switches

Industrial switches play a crucial role in various industrial applications to help your network stay up and keep it running even in the least favorable

[Contact Us](#)



Industrial Ethernet Switches Selection



This Industrial Ethernet Switch Selection Guide is a selection guide that highlights key issues, such as ruggedness, designed to help organizations make informed choices when selecting industrial switches. How best to evaluate both

[Contact Us](#)



Google

Explore Google's shopping platform for a seamless online shopping experience with updated product details and offers from various merchants.

[Contact Us](#)



Industrial Ethernet Switch Buying Guide: 4 Essentials

Learn how to choose an industrial Ethernet switch for harsh environments: resilience, PoE, secure management, and protocol support.

[Contact Us](#)



Complete Guide to Buying a Transfer Switch

A transfer switch is a critical component for safely and efficiently switching between power sources, whether you're transitioning from a utility grid to a backup

[Contact Us](#)





Guide to implementing Industrial Grade Switches

However, implementing industrial grade switches is a complex process that requires careful consideration and planning. With detailed analysis

[Contact Us](#)



A Guide to Picking the Right Industrial Ethernet Switch

Discover the essential aspects of choosing the right Industrial Ethernet Switch. Explore network requirements, key features, and more for optimal performance.

[Contact Us](#)

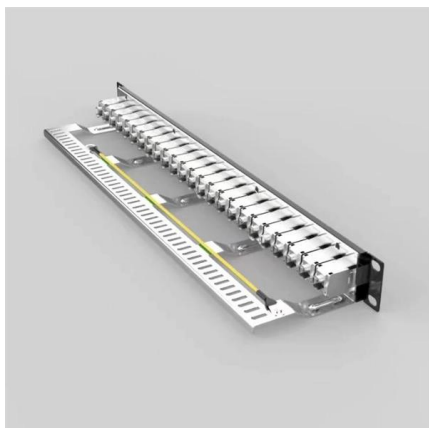
Industrial Ethernet Switch Buyer's Guide 2026

Industrial Ethernet Switch Buyer's Guide 2026 -- this comprehensive guide provides engineers and system integrators with practical, data-driven insights into industrial networking

[Contact Us](#)



PRODUCTION NAME	Frequency conversion control cabinet
POTECTION DEGREE	IP55
VOLTAGE	220/380V
SIZE	customized as required
MOUNTING WAY	Floor-standing
APPLICATION	Indoor and outdoor



In-Depth Guide to Industrial Switch Selection

In-Depth Guide to Industrial Switch Selection: Cracking the Ultimate Code for Balancing Scenario-Specific Needs and Performance. In the wave of Industry 4.0 and intelligent manufacturing, industrial

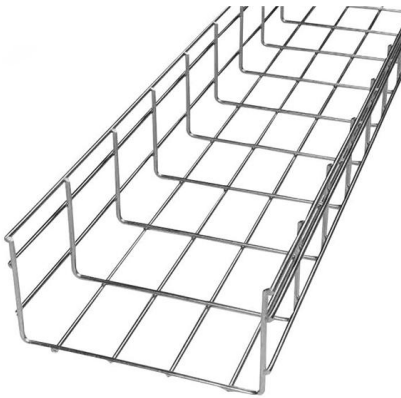
[Contact Us](#)

How to Choose an Industrial Switch



How to Choose an Industrial Switch With the rapid development of Industry 4.0 and the Internet of Things (IoT) technology, industrial switches, as a crucial component in industrial communication

[Contact Us](#)



Switches and Safety: Choosing the Right Switchgear for

In the heart of every industrial operation lies a network of wires, cables, and switches. To control and distribute electrical power in all these

[Contact Us](#)

Industrial Ethernet Switches Selection Guide

No longer just a network accessory, the industrial Ethernet switch has evolved from its origins as a simple factory data acquisition device. Today, these switches serve a continually broadening



[Contact Us](#)



Choosing the Right Network Switch

A network switch (or Ethernet switch) is a communication device that is used to distribute data over cable networks. It usually comes in the form of a box with

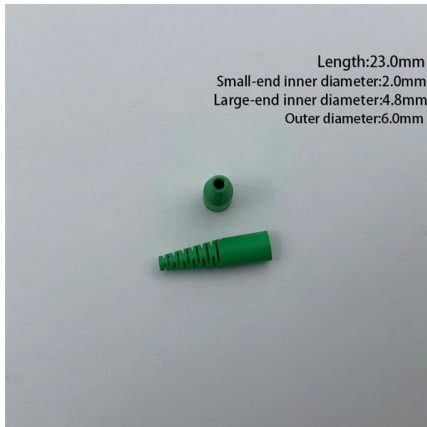
[Contact Us](#)



Industrial Ethernet Switch Selection Guide

Learn how to choose an industrial Ethernet switch for automation systems, Profinet networks, and reliable industrial PCBA deployment.

[Contact Us](#)



Industrial Ethernet Switches

Modernize your operations with Cisco Industrial Ethernet switches: Increase productivity, boost security, and empower industrial AI.

[Contact Us](#)

FS Community

Hier sollte eine Beschreibung angezeigt werden, diese Seite lässt dies jedoch nicht zu.

[Contact Us](#)



Choosing the Right Industrial Switch for 2025

Discover the best types of industrial switches for harsh environments & smart operations in 2025. Learn key features, and advantages, and how to select

[Contact Us](#)

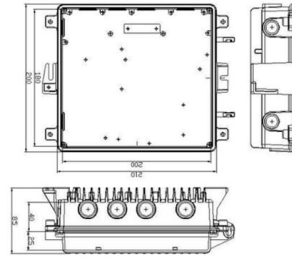




How to Select Industrial-Grade Switches Based on Port

Learn how to choose industrial-grade switches by port count, PoE budget and data speed for reliable and efficient industrial networking.

[Contact Us](#)



How to pick the right Industrial Ethernet Switch for

The initial decision to make when selecting an industrial Ethernet switch is whether to go with a managed switch or an unmanaged switch. Unmanaged switches are

[Contact Us](#)

Float Switch Purchasing Guide: Top 10 Concerns Buyers Care About

Explore expert insights on Float Switch Purchasing Guide: Top 10 Concerns Buyers Care About (ELECALL). Learn how ELECALL's measurement and control solutions

[Contact Us](#)



Contact Us

For datasheets, pricing, or custom fiber access solutions, please visit:
<https://frindel.es>