

Indoor distribution box circuit and incoming line





Indoor distribution box circuit and incoming line



The Complete Guide to Distribution Box: Installation, Types & More

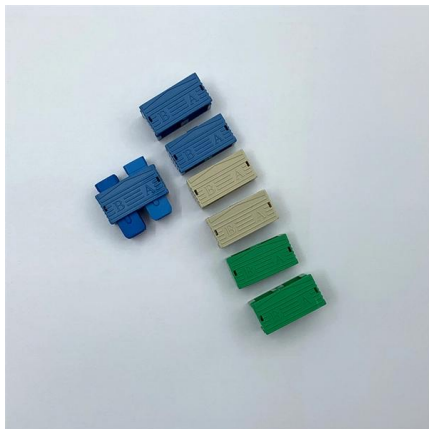
What's the difference between a distribution box and a sub-panel? A distribution box typically refers to the main electrical panel that receives power from the utility service. A sub-panel is

[Contact Us](#)

Basics in low voltage distribution equipment

A distribution structure divides and sends power to branch circuit protection devices and then to branch circuits to power downstream loads. Power moves from the incoming structure to the distribution

[Contact Us](#)



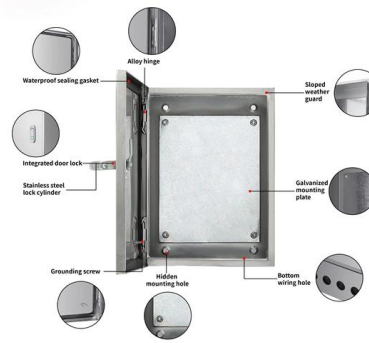
1. Electrical Single Line Diagram Guidance

The single-line diagram is the blueprint for electrical system analysis. It is the first step in preparing a critical response plan, allowing you to become thoroughly familiar with the electrical distribution

[Contact Us](#)

An Introduction to Interior Electrical Distribution Systems

Use Type 1 or Type 2 SPD and connect on the load side of a dedicated circuit breaker of the associated main distribution or branch panelboard, switchboard, or switchgear.



**DB BOX(Electrical Distribution Box):
Everything You**

Wiring: Next, the electrical cables will be connected to the incoming power source (like the main distribution panel) and the outgoing circuits. Circuit

[Contact Us](#)

Key Diagram of 11kv/400v Indoor Substation

There are two 66 kV incoming lines marked 'incoming 1' and 'incoming 2' connected to the bus-bars. Such an arrangement of two incoming lines is called a double

[Contact Us](#)



**DB BOX(Electrical Distribution Box):
Everything You**

From low-voltage to high-voltage systems, and from indoor to outdoor installations, there is a suitable DB Box for every situation. At QINJIA Electric, we

[Contact Us](#)



Electrical Power distribution panel:



diagram, working

1 - Power Distribution Panel: Power distribution panel is used for utilization of equipment. Power supply is received from LT panel and distributed to the

[Contact Us](#)



Incoming Line Phase Identification of the Meter Box Bus of Low

A new and comprehensive field intelligent electronic device, Circuit Terminal Unit, is developed to solve the problem of lacking real-time monitoring and controlling of low voltage

[Contact Us](#)



DRAFT SPECIFICATION FOR L. T. DISTRIBUTION BOX OF

DRAFT SPECIFICATION FOR L. T. DISTRIBUTION BOX OF DISTRIBUTION TRANSFORMER (DTR) OF DIFFERENT RATINGS WITH INCOMING PORCELAIN REWIREABLE FUSE UNIT AND

[Contact Us](#)



Incoming Cabinets: The First Line of Defense in Power Distribution

Discover the integral role of incoming cabinets in power distribution, ensuring stable and safe electrical supply. Learn about voltage regulation, circuit protection, and load balancing for

[Contact Us](#)

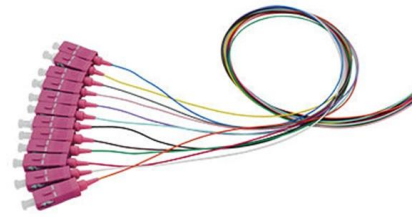




The Complete Guide to Distribution Box: Installation, Types & More

The primary purpose of a distribution box is to provide a safe and organized way to control electrical circuits. When an electrical fault occurs, such as an overload or short circuit, the protective

[Contact Us](#)



Line incoming and outgoing structure of power distribution box

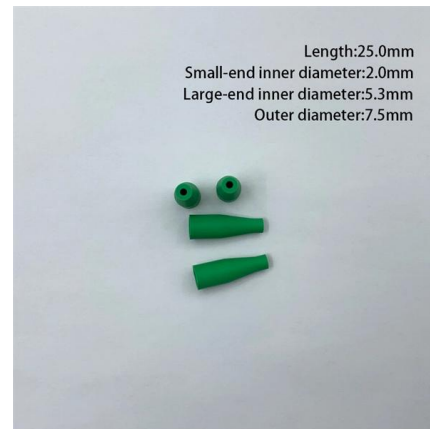
The line incoming switchgear room, the watt-hour meter room and the line outgoing room are separated from each other and are independently formed, so that the structure is suitable for a modularized

[Contact Us](#)

Inside Your Main Electrical Service Panel

Warning: The main circuit breaker shuts off the power to all of the branch circuits but does not shut off the power from the utility. The utility service

[Contact Us](#)



Selection and installation considerations for the incoming line method

Just like you wouldn't want a weak or clogged artery in your body, you don't want subpar incoming lines feeding your distribution box. We'll walk through everything you need to consider,

[Contact Us](#)



Distribution Boxes: Types and Functions

These components support residential and commercial installations by managing the incoming supply, distributing power across branch circuits, and

[Contact Us](#)



What is a Distribution Box? - A Comprehensive Guide

Indoor distribution boxes are compact and accessible, suitable for controlled environments such as homes and offices where moisture and

[Contact Us](#)



The composition and function of incoming cabinet,

The power supply system is used to bring high voltage through transformer step-down to the required voltage level of the user and is equipped with protection,

[Contact Us](#)

Motor protection controller



How Does a Power Distribution Box Work

Learn how a power distribution box works step by step--from incoming power to circuit protection and smart monitoring--for safe, efficient electricity delivery.

[Contact Us](#)



Wiring Of Neutral Block In Distribution Box

If the indoor distribution box is designed according to the latest "code for electrical design of civil buildings", then the incoming lines of the distribution box must be three wires, one live wire, one

[Contact Us](#)



The installation requirements for the distribution box

Learn how to install a distribution box safely and correctly. Covers wiring, placement, standards, and expert tips for a compliant setup.

[Contact Us](#)

How to Wire a Home Distribution Box

How to Wire a Home Distribution Box - Step-by-Step , Distribution DB box wiring diagram
Welcome to our channel! In this video, we'll walk you through

[Contact Us](#)



Wiring requirements of distribution box

The connection between bridge and distribution box (cabinet) is connected with rubber plate to protect wires and cables. The secondary circuit wiring distribution cabinet shall complete the secondary

[Contact Us](#)



Power Distribution Boxes Explained Simply

Learn what a power distribution box is, how it works, key components, types, and why it's vital for safe and efficient electrical systems.

[Contact Us](#)



Contact Us

For datasheets, pricing, or custom fiber access solutions, please visit:
<https://frindel.es>