

# **Increase the delay of the light sensor module**





## Overview

---

A longer delay is useful for applications like automatic lighting, where you want the light to stay on for a while after movement is detected. The PIR sensor module comes with two built-in potentiometers that allow you to fine-tune its behavior: Delay Time and Sensitivity. The Two Key Variables: Time Delay and Lux Threshold Before delving into adjustment, it's essential to define these terms: Time Delay (Duration): This is the length of time the connected light (or other device) remains on after the last detected motion. include access RESET mode, select delay time option, change option, check delay time setup, and delay time test. Whether you're a DIY enthusiast or a small business owner seeking to optimize your security system, this guide on how to adjust time delay in pir sensor is tailored to meet your.



## Increase the delay of the light sensor module

---

- ✓ Slow Axis Aligned (0°) - for standard sensing applications
- ✓ Fast Axis Aligned (90°) - for special modulation applications
- ✓ 45° Axis Aligned - for depolarizer applications



### Arduino

The LDR light sensor is very affordable, but it requires a resistor for wiring, which can make the setup more complex. To simplify the wiring, you can use an LDR light

[Contact Us](#)

### Configuring HC-SR501 PIR Motion Sensor Detection

A longer delay is useful for applications like automatic lighting, where you want the light to stay on for a while after movement is detected. Turn clockwise to increase

[Contact Us](#)



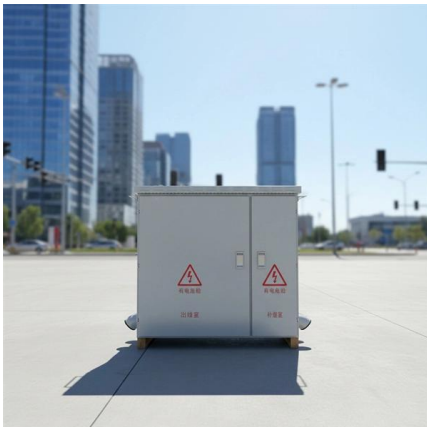
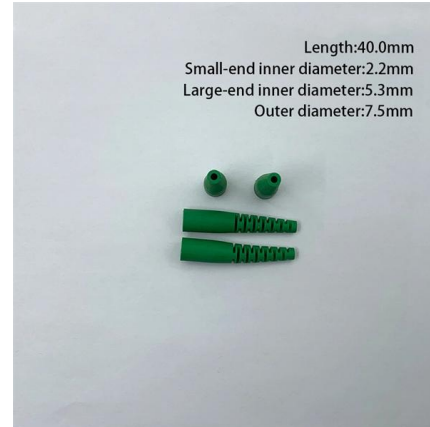
### Tailoring The Trigger: Adjusting PIR Sensor Delay And

The ability to adjust a PIR sensor's time delay and lux threshold is fundamental to its efficiency and user satisfaction. The method of adjustment

[Contact Us](#)

### How to Set Delay Time Option for PIR Sensor Switching Module

this videos shows operation of setting for pir sensor switching delay time. include access RESET mode, select delay time option, change option, check delay time setup, and delay time test.



### How to detect light using an Arduino

Using an Arduino board, we can easily interface with various sensors and components to detect light. One of the most commonly used sensors for light

[Contact Us](#)

### How to use LDR Sensor Module with Arduino

LDR Sensor Module (Light Dependent Resistor) A photoresistor module serves as a light intensity detection device in various environments. It has

[Contact Us](#)



### How to Adjust Light Sensor: Comprehensive Guide for

By carefully manipulating sensitivity, time delay, and positioning, users can optimize sensor performance, reduce false triggers, and enhance energy efficiency.

[Contact Us](#)



Checking your browser before accessing undefined Click here if you are not automatically redirected after 5 seconds. Checking your browser - reCAPTCHA

[Contact Us](#)



### Arduino BH1750 Ambient Light Sensor Interfacing Tutorial

In this tutorial, we will use one such sensor BH1750 Light Sensor Module and interface it with Arduino and show the Lux value over 16x2 LCD.

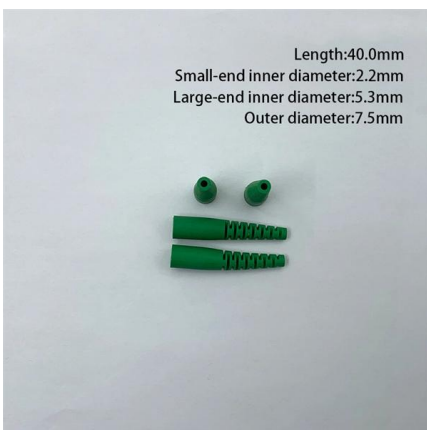
[Contact Us](#)



### Troubleshooting PIR Sensor and sensitivity adjustment

A PIR sensors allows us to sense motion by measuring infrared (IR) light radiating from the object in its field of view. When it fails to do this, the

[Contact Us](#)



119444 die 110023 und 108646 der 61406 in 39759 von 37276 zu 36337 das 31769 den 30981 fÃ¼r 29484 ist 26923 mit 24596 im 24129 auf 24121 des 23440 nicht 23371 eine 22483 auch 21975 sich

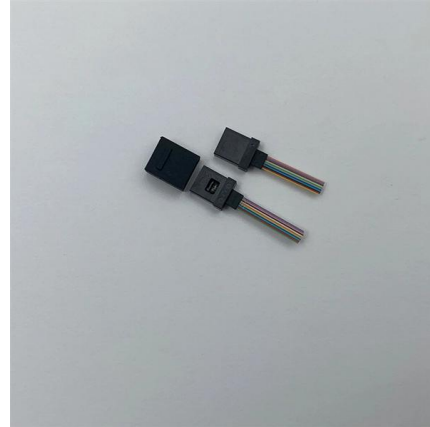
[Contact Us](#)



## How to Interface TEMENT6000 Ambient Light Sensor with

In this tutorial, we will interface the TEMENT6000 sensor with an Arduino Nano, control an LED based on light intensity, and display real-time data on an

[Contact Us](#)



## Light Sensor: How to Make Your Robots React to Light

Unlock the Power of Light Sensors: Make your robots responsive to light with this comprehensive guide. Step-by-step instructions for Arduino

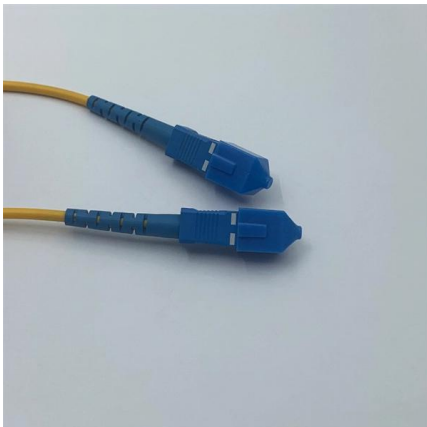
[Contact Us](#)



## Photoresistor Interfacing with Arduino for Light

Photoresistor Module Applications The LDR's sensitivity changes with the wavelength of light coming at it, and they are non-linear devices. Applications of

[Contact Us](#)



## Raspberry Pi

The LDR light sensor is very affordable, but it requires a resistor for wiring, which can make the setup more complex. To simplify the wiring, you can use an LDR light

[Contact Us](#)



## Learn Coding with Arduino IDE - PIR Motion Sensor

The time delay adjustment determines how long the output of the PIR sensor module will remain high after detection motion. The range is from about 5

[Contact Us](#)



## LM393 Light Detection Sensor Module Tutorial: Analog

You will learn how the module works internally, how to wire it correctly, how to tune the sensitivity, and how to use it reliably with Arduino. This tutorial is a

[Contact Us](#)

## Getting Started with Light Sensor Module (SN-LIGHT)

INTRODUCTION SN-LIGHT-MOD is a photosensitive resistor module, suitable to detect environmental light intensity and ambient brightness. Its

[Contact Us](#)



## Interfacing LDR Sensor with Arduino - Step-by-Step

How LDR Sensors Work The LDR sensor is made of a photosensitive material, usually cadmium sulfide, which changes its resistance based on light

[Contact Us](#)



## Arduino Tutorial: Light sensing

In this blog/tutorial, we will see how to use a Light Dependent Resistor (also called a photoresistor) along with an Arduino as a light sensor and log our readings on to the Serial Monitor.

[Contact Us](#)



## Light Magic: Using LM393 and Arduino UNO

Automatic light control using a photosensitive LDR sensor module and Arduino. Find this and other hardware projects on Hackster.io.

[Contact Us](#)



## Arduino LDR Sensor: Day and Night detection system

Arduino LDR Sensor, Example: In this example, we are going to cover two things an LDR Sensor and a 5V SPDT type relay. In the previous

[Contact Us](#)



## LDR Modules

LDR sensor modules allow to measure the intensity of ambient light by using a light dependent resistor (LDR). If you want to learn more about LDRs

[Contact Us](#)



## LDR sensor with Arduino - How to use (with examples)

Learn how to use a Light Dependent Resistor with Arduino. This post will cover the basics of the LDR and how to use it to turn on a light when it's dark.

[Contact Us](#)



## Photoresistor Sensor Module with Arduino - Step by

The Photoresistor Sensor module, also known as a Light Dependent Resistor (LDR), is an essential component for light sensing applications with

[Contact Us](#)

## Raspberry Pi Light Sensor using an LDR

This Raspberry Pi light sensor tutorial takes you through all the steps to get the LDR sensor setup correctly so you can use it in a project.

[Contact Us](#)



## Tailoring The Trigger: Adjusting PIR Sensor Delay And

Conclusion: Matching Adjustment to Application  
The ability to adjust a PIR sensor's time delay and lux threshold is fundamental to its efficiency and

[Contact Us](#)



## How to Adjust Time Delay in Pir Sensor , 6 Effective Methods

By following the steps outlined in this guide on how to adjust time delay in pir sensor, you can customize your sensor settings to meet your specific needs, whether for energy savings,

[Contact Us](#)



## Contact Us

---

For datasheets, pricing, or custom fiber access solutions, please visit:  
<https://frindel.es>