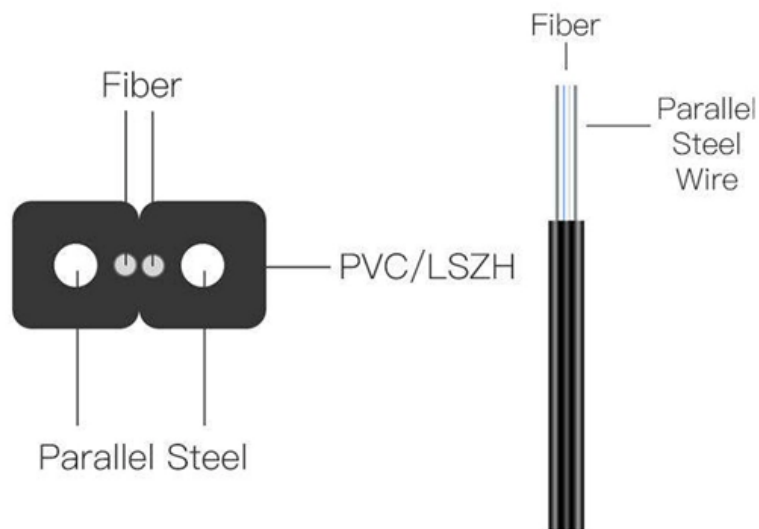


Hungarian laser diode QSFP28





Hungarian laser diode QSFP28



Network Cabinet & Rack

QSFP28-100G-DR1

QSFP28-100G-DR1 100Gbps QSFP28 Single Lambda DR Transceiver Single Mode, 500m Reach

[Contact Us](#)



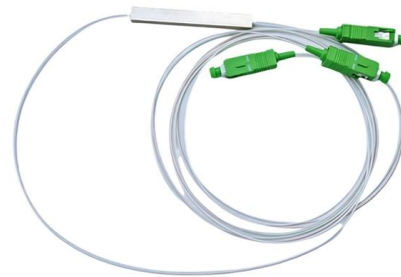
100G-QSFP28-AI and Data Center Networking

They have a case temperature range of 0°C~70°C and comply with IEEE 802.3bm and QSFP28 MSA standards. The products are primarily used in 100G Ethernet,

Coherent Announces General Availability of Industry's First Dual-Laser

Coherent announced the general availability of the industry's first dual-laser QSFP28-DCO module designed to enable bi-directional 100G coherent transmission over a single working fiber.

[Contact Us](#)



Oclaro completes qualification of non-hermetic 25Gb/s DFB lasers for

"The 25Gb/s DFB laser diode is a critical component at the core of a new generation of 100Gb/s transceivers optimized for data-center switching applications such as QSFP28

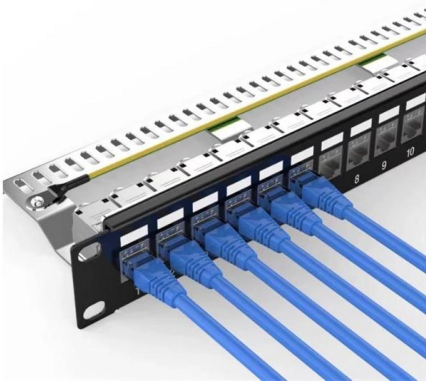
[Contact Us](#)



QSFP28 - Wuhan GChipoptic Technology Co., Ltd.

Featuring precision TO46/TO56 packaging, our Laser Diode and PIN TIA TO-CAN series provide excellent thermal management and high-frequency signal integrity.

[Contact Us](#)



QSFP28-100G-LR1

The product is designed with form factor, optical/electrical connection and digital diagnostic interface according to the QSFP28 Multi-Source Agreement (MSA). It has been designed to meet the harshest

[Contact Us](#)



Silicon Photonics vs. Laser Technologies: Optimizing 100G QSFP28

This comparative analysis delves into the technical merits, scalability challenges, and future trajectories of both silicon photonics and conventional laser technologies within next

[Contact Us](#)



Q282D080500F / QSFP28 / 50GBase-ZR2



Q282D080500F is a high performance QSFP28 transceiver module for 50Gbps data links over a single mode fibre pair. The maximum reach is 80km. The two transmitters are cooled 1310nm LAN-WDM

[Contact Us](#)



Optischer Intel® 100G-LR4-QSFP28-Silizium-Photonik-Transceiver

Optischer Intel® 100G-LR4-QSFP28-Silizium-Photonik-Transceiver Kurzübersicht über Spezifikationen, Funktionen und Technik.

[Contact Us](#)

STEPP - Hungarian Laser Cluster » About the STEPP

The establishment of STEPP - Science, Technology and Educational Platform for Photonics, Hungary Cluster - had been preceded by decades long R& D& I

[Contact Us](#)



100GBASE-LR QSFP28 10km , EUR294 , EDGE Optical

100GBASE-LR single lambda QSFP28 transceiver. PAM4 106.25 Gbps, 10km SMF, IEEE 802.3cu. EML laser, built-in FEC, 6.3 dB link budget, DDM. From EUR294.

[Contact Us](#)



Connecting the QSFP28 100G FR single laser in

The single-laser QSFP28 (100GBASE-FR) requires a DSP and just one laser, removing the need for a filter, drastically reducing the complexity of

[Contact Us](#)



Connecting the QSFP28 100G FR single laser in

The QSFP28 100GBASE-FR, also called QSFP28 100G single lambda, will be a single laser and a single receiver of 100Gbps instead of being

[Contact Us](#)

100GBASE-LR4 QSFP28 10km SMF , EUR181 , EDGE

100GBASE-LR4 QSFP28 transceiver, 10 km SMF, 4 LAN WDM, 6.3 dB link budget. Dual-rate LR4/OTU4 (112 Gbps). EU stock + lifetime warranty. From EUR181.

[Contact Us](#)

Various specifications optional



FTTH BOOK-TYPE TERMINAL BOX

Sleek Design. Reliable Connectivity.



COMPACT & DURABLE

EASY INSTALLATION

Thorlabs, Inc.

Hier sollte eine Beschreibung angezeigt werden, diese Seite lässt dies jedoch nicht zu.

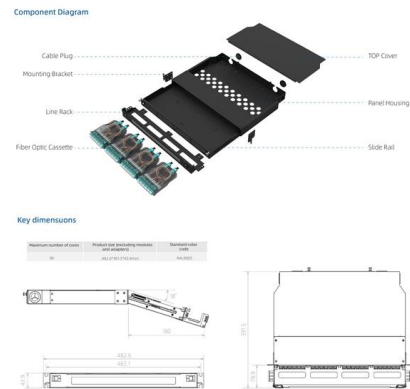
[Contact Us](#)



Overview of QSFP28 LR4 Optical Transceiver

Discover FS's QSFP28 100G LR4 optical transceiver, offering low power consumption, perfect compatibility, and reliable long-distance performance

[Contact Us](#)



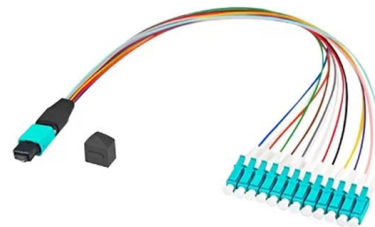
Intel® Silicon Photonics 100G DR/FR/LR QSFP28 Optical Transceiver

Intel® Silicon Photonics 100G DR/FR/LR QSFP28 Optical Transceiver quick reference with specifications, features, and technologies.

[Contact Us](#)

Innovations in Silicon Photonics and Laser Technologies for 100G

The integration of silicon photonics and advanced laser technologies is driving the evolution of 100G QSFP28 transceivers. These innovations not only improve current performance



[Contact Us](#)



Everything You Need to Know About QSFP28 LR4

Additionally, QSFP28 LR4 is subjected to stringent testing and verification procedures before release, ensuring high reliability and product

[Contact Us](#)

100Gb/s QSFP28 DR 1310nm 500m Single



Lambda Optical Transceiver

Features Applications Hot-pluggable QSFP28 MSA form factor Supports 53.125Gbaud 100G Lambda MSA 100G-DR Specification compliant Up to 500m transmission on single mode fiber

[Contact Us](#)



QSFP28 Optical Transceiver 100 Gigabit Ethernet for up to 10 km Reach

QSFP28 Optical Transceiver -100 Gigabit Ethernet for up to 10 km Reach This equipment generates uses and can radiate radio frequency energy and, if not installed and used in accordance with the

[Contact Us](#)



Eine kurze Einführung in den optischen Transceiver QSFP28 LR4

QSFP28 LR4 ist ein Hot-Plug-fähiger optischer 4-Kanal- und Duplex-Transceiver, der für die Übertragung über eine Distanz von bis zu 10 km im 100G-Ethernet-Netzwerk ausgelegt ist. Der

[Contact Us](#)



100G BiDi QSFP28 150m , Single Fiber MMF

EDGEOPTIC 100G BiDi QSFP28: 150m OM5 MMF single fiber, 850/900nm, 1.9dB budget, 106.25 Gbps. LC simplex connector, also supports 40G QSFP operation.

[Contact Us](#)





Coherent: Dual Laser 100G ZR QSFP28-DCO Transceiver

Coherent's Dual Laser 100G ZR QSFP28-DCO incorporates two full C-band, independently tunable lasers, one for the transmit side and one for the receiver local oscillator.

[Contact Us](#)



QSFP+/28/56 AND SFP28/56 OVERVIEW

QSFP28 BiDi TRANSCEIVERS 1) This transceiver has inbuilt FEC so host system shall not activate FEC.

[Contact Us](#)

100GBASE-LR QSFP28 Single Lambda 1270-1330nm 10km DOM

Description The 100GBASE-LR Single Lambda QSFP28 Optical Transceiver Module is designed for use in 100GBASE Ethernet throughput upto 10km over single mode fiber (SMF) using a wavelength of

[Contact Us](#)



100Gb/s QSFP28 DR 1310nm 500m Single Lambda Optical Transceiver

The product is designed with form factor, optical/electrical connection and digital diagnostic interface according to the QSFP28 Multi- Source Agreement (MSA). It has been designed

[Contact Us](#)

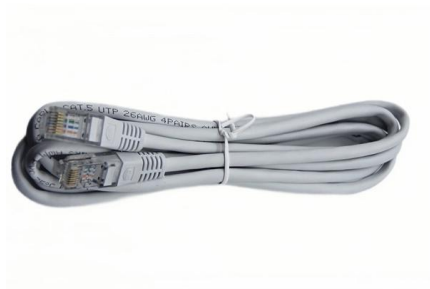




100GBase CWDM4 Spec Sheet

The QSFP28-100GBASE-CWDM4 is a 103 Gbps transceiver module designed for optical communication applications compliant to 100GBASE-LR4 of the IEEE P802.3ba standard.

[Contact Us](#)



EFFECT Photonics Unveils Development of Pico

EINDHOVEN, The Netherlands--EFFECT Photonics, a leading developer of highly integrated optical solutions, announced today the development of a new Pico

[Contact Us](#)

Contact Us

For datasheets, pricing, or custom fiber access solutions, please visit:
<https://frindel.es>