

Huijue Single-Mode 10 Gigabit Optical Module





Huijue Single-Mode 10 Gigabit Optical Module



Accessories MINI-GBIC-LX-SM1310 1000BASE-SX SFP 1310-nm 10

MINI-GBIC-LX-SM1310 Module The MINI-GBIC-LX-SM1310 is aligned to IEEE 1000BASE-LX optical specifications and supports a link length of up to 10 kilometers over a single-mode fiber (SMF) with

[Contact Us](#)

10 Gigabit Fiber SFP+ Optical Transceiver Module

10 Gigabit Connectivity Intellinet Network Solutions 10GBase-LR Fiber SFP+ Optical Transceiver Module, model 507479, is the right choice when it comes to connecting two buildings at 10 GbE

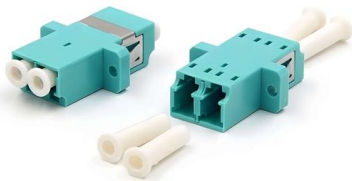
[Contact Us](#)



10G single-mode OSX010000: a reliable solution for enterprise high

The 10G single-mode optical module OSX010000 is Huawei's 10G single-mode optical module based on optical fiber transmission. It supports long-distance transmission and is suitable for data centers,

[Contact Us](#)



Huawei SFP-10G-LR 10G SFP+ 1310nm 10km Single

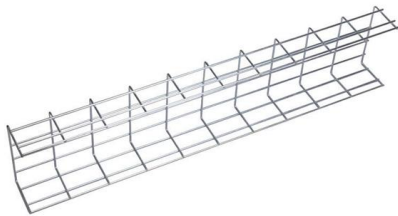
Huawei SFP-10G-LR Overview The Huawei Optical Transceiver SFP-10G-LR is a versatile and high-performance 10G SFP+ module. Designed for single-mode



Generic SFP-10G-LR Compatible 10GBASE-LR SFP

Generic SFP-10G-LR Compatible 10GBASE-LR SFP+ Transceiver Module (SMF, 1310nm, 10km, LC, DOM) This Generic SFP-10G-LR compatible SFP+

[Contact Us](#)



HW eSFP-GE-LX10-SM1310 1000BASE-LX SFP Transceiver Module

HW eSFP-GE-LX10-SM1310 compatible SFP transceiver supports up to 10km link lengths over LC duplex SMF fiber. Each SFP transceiver

[Contact Us](#)



Hua Wei (HUA WEI) S-SFP-GE-LH40-SM1310 Gigabit Optical Module

Hua Wei (HUA WEI) S-SFP-GE-LH40-SM1310 Gigabit Optical Module - ESFP-GE-Single Mode Module (1310nm, 40km, LC Connector)

[Contact Us](#)





SFP-GE-LX-SM1310-BIDI-HW

If you have any questions about this Huawei Optical Transceiver, eSFP, GE, BIDI Single-mode Module (TX1310/RX1490,10 km, LC) SFP-GE-LX-SM1310-BIDI-HW

[Contact Us](#)



Huawei SFP-10G-LR 10G SFP+ 1310nm 10km Single

The Huawei Optical Transceiver SFP-10G-LR is a versatile and high-performance

[Contact Us](#)

Industrial Gigabit Fiber SFP Optical Transceiver Module,

Industrial Gigabit Fiber SFP Optical Transceiver Module, Single-Mode 10 km 1000Base-LX (LC) Single-Mode Port, 10 km (6.2 mi.), MSA-compliant for

[Contact Us](#)



10G 1310nm 10km SM SFP+ Huawei Brand New Optical Transceiver

Engineered for long-distance data transmission up to 10 kilometers, this hot-pluggable SFP+ module operates at a 1310nm wavelength, making it ideal for enterprise networks, metropolitan area

[Contact Us](#)



1G SFP LX 1310nm 20km Single mode Transceiver

Generic SFP-1G-LX Compatible 1000BASE-LX/LH SFP 1310nm 10km-20km Transceiver supports 1G gigabit Ethernet throughput over singlemode fiber (SMF)

[Contact Us](#)



10 Gigabit Fiber SFP+ Optical Transceiver Module

This 10 Gigabit Fiber SFP+ Optical Transceiver Module supports standard digital diagnostics monitoring (DDM) functions, also known as digital optical monitoring

[Contact Us](#)

Buy in Anvimur this SFP+ Huawei 10Gb Fiber Module,

A 10GE optical module (SFP+) is connected to two LC optical fibers to provide one GE channel. 40 kilometres.

[Contact Us](#)



Huawei Technical Support

This document provides technical details about 1Gbps eSFP Optical Modules, including specifications and support information.

[Contact Us](#)



SFP Transceiver

The GSFIBER-SFP-10K is a Gigabit Ethernet single-mode SFP transceiver. Utilizing LC connectors and operating at a 1310nm wavelength, it enables high-speed data transmission over single-mode fiber

[Contact Us](#)



10-Gigabit Single-Mode Optical Module Dual-Fiber

10-Gigabit Single-Mode Optical Module Dual-Fiber SFP+10g1310nm10km40 80km Osx001002, Find Details and Price about Core Gigabit 10km Optical Transmission from 10-Gigabit Single-Mode

[Contact Us](#)

Huawei SFP-10G-iLR SFP+ 10GBASE-LR Singlemode Transceiver

Make troubleshooting, maintenance and monitoring in your network easier with the Digital Diagnostics Monitoring (DDM) / Digital Optical Monitoring (DOM) interface integrated into the SFP-10G-iLR

[Contact Us](#)



Huawei SFP-10G-GE-LX Compatible 10Gb SFP

This high-quality Huawei SFP-10G-GE-LX Compatible 10GBASE-LR SFP+ 1310nm 10km DOM Transceiver. A cost-effective solution that provides high bandwidth

[Contact Us](#)



OSX010000 SFP+ OSX010000 price and specs

OSX010000 SFP+ is a new generation of 10 Gigabit optical modules. It can meet the applications of Fibre Channel 8.5G and Ethernet 10G in accordance with the

[Contact Us](#)



Huawei OSX010000 SFP+ 10G Single Mode Optical

Huawei OSX010000 SFP+ 10G transceiver for single-mode fiber, 1310nm wavelength, 10km range. Compliant with 10Gbase-LR standard.

[Contact Us](#)



10 Gbit/s SFP+ Optical Module

You can use different levels of 10 Gbit/s SFP+ optical modules only with 10 GE interfaces. The wavelength of these 10 Gbit/s SFP+ optical modules can be 850 nm, 1310 nm, or

[Contact Us](#)



Huawei SFP-GE-LX-SM1310-A Single Mode Fiber Transceiver

Professional Huawei SFP module with 1.25Gbps data rate, 1310nm wavelength & 10km range. 100% H3C compatible with lifetime warranty.

[Contact Us](#)

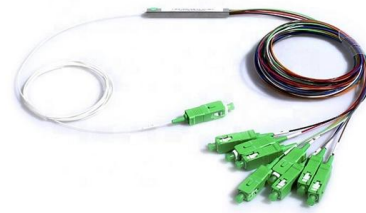




Huawei OSX010000 SFP+ 10G Optical Transceiver Module

Huawei OSX010000 SFP+ 10G optical transceiver module for 10km single-mode fiber, compact design, 1-year warranty. Ideal for enterprise networks.

[Contact Us](#)



10-Gigabit Single-mode Optical Module Dual-fiber

Type optical module Brand Name huawei Place of Origin China Use OEM Warranty Time 3years Network Wireless Lan, Wired LAN, Wi-Fi Port sfp Power Source DC 12 V Connector Type LC

[Contact Us](#)

Dahua GSFP-1310T-20-SMF Gigabit Optical Module

The GSFP-1310T-20-SMF from Dahua is a high-performance gigabit optical module designed for efficient data transmission. Built with a single mode single fiber architecture, this module supports a

[Contact Us](#)



Huawei SFP-10G-USR 10G SFP+ Optical Transceiver

Deploy Huawei SFP-10G-USR 10G SFP+ optical transceiver for short-reach multimode 850nm links up to 0.1km. Check live stock and competitive price.

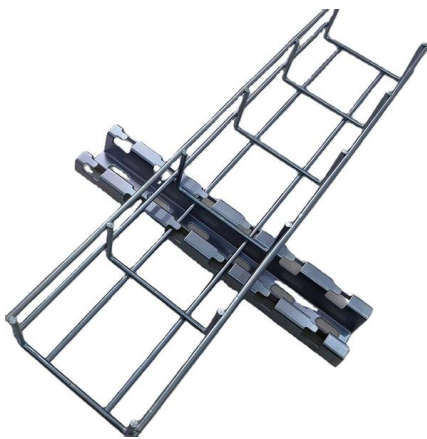
[Contact Us](#)



02310QBJ

And the Huawei SFP-10G-BXU1 10GBase, BIDI Optical Transceiver, SFP+, 10G, Single-mode Module (TX1270nm/RX1330nm, 10km, LC) is factory new with

[Contact Us](#)



Buy in Anvimur this SFP+ Huawei 10Gb Fiber Module,

You can already buy this module at AnvimurFiber Module SFP+ Huawei 10Gb, Monomode, up to 10km

[Contact Us](#)

Contact Us

For datasheets, pricing, or custom fiber access solutions, please visit:
<https://frindel.es>