

Huijue 16-speed optical switch





Huijue 16-speed optical switch



HUIJUE OCS OPTICAL SWITCH Datasheet, PDF

HUIJUE OCS OPTICAL SWITCH null, HUIJUE OCS OPTICAL SWITCH datasheet free, HUIJUE OCS OPTICAL SWITCH PDF, HUIJUE OCS OPTICAL SWITCH buy price, HUIJUE OCS OPTICAL

[Contact Us](#)

Optic Switch,Optical Switch module,Isolator,Splitter,Coupler,FWDM

The Fiberer's 8x8 fiber optic switch is a very fast opto-mechanical switch array based on the MEMS technology. They are composed of an optical subsystem and an electrical driver i

[Contact Us](#)

Ordering information

NO.	1	2	3	4	5	6
Model	SP1201	SP1202	SP1601	SP1602	SP1203	SP1204
Product name	Patch Panel	Patch Panel	Patch Panel	Patch Panel	Patch Panel	Patch Panel
Illustration						
NO.	1	2	4	1	2	4
Maximum number of cores	144	288	576	144	288	576
Product size (including module and packaging)	482.0*231*174 mm	482.0*311*181 mm	482.0*311*177 mm	482.0*311*174 mm	482.0*311*181 mm	482.0*311*177 mm
Standard color code	SA19005	SA19005	SA19005	SA19005	SA19005	SA19005



HUIJUE G7615 OPTICAL SWITCHING

Ask Alldatasheet AI for the information you need. AI instantly answers questions about HUIJUE G7615 OPTICAL SWITCHING's overview, technical specifications, replacement part information, and more.

[Contact Us](#)

High-efficiency lithium niobate optical mode switch using a mode-loop

This optical mode switch has a potential application in supporting high-speed data transmission for on-chip mode-division-multiplexing systems.



Matrix optical switch

Matrix optical switch Any MxN configuration, Fast switching speed, Low loss, Low crosstalk The Matrix MXN fiber optical switches allow simultaneous connection

[Contact Us](#)



Nano-Second Speed NxN Optical Switches - EpiPhotonics

EpiPhotonics offers high-speed NxN optical switches with nano-second switching, low power consumption, and low loss for advanced photonic applications.

[Contact Us](#)



What Are Optical Keyboard Switches, And How Do They

Optical keyboard switches differ from typical mechanical switches in that they use light for actuation instead of a mechanical connection. Of course,

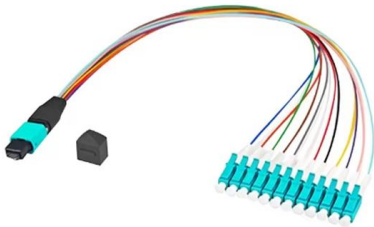
[Contact Us](#)



DiCON MM1C-16 MULTI-CHANNEL FIBER OPTIC SWITCH

This 16-channel fiber optic switch matrix provides reliable optical path switching for test automation applications. The system features manual front-panel control with LED path indication.

[Contact Us](#)



Optical Switches

The fastest, smallest, most reliable optical switches in the industry. Used in medical devices, undersea cables, quantum computers, underground and outer space.

[Contact Us](#)

(PDF) 16 × 16 non-blocking silicon optical switch based

We experimentally demonstrate a 16 × 16 non-blocking optical switch fabric with a footprint of 10.7 × 4.4 mm². The switch fabric is composed of 56 2 ×

[Contact Us](#)



HUIJUE G7615 OPTICAL SWITCHING Datasheet, PDF

HUIJUE G7615 OPTICAL SWITCHING null, HUIJUE G7615 OPTICAL SWITCHING datasheet free, HUIJUE G7615 OPTICAL SWITCHING PDF, HUIJUE G7615 OPTICAL SWITCHING buy price,

[Contact Us](#)



High-speed 2 × 2 silicon-based electro-optic switch with

Abstract A 2 × 2 electro-optic switch is experimentally demonstrated using the optical structure of a Mach-Zehnder interferometer (MZI) based on a submicron rib waveguide and the

[Contact Us](#)



MEMS Optical Switch (16x16 32X32 64X64)_anfiber

MEMS 16X16 32X32 64X64 Optical Switches (single mode,1310/1550nm) Base on MEMS technology,non-blocking optical matrix switch with 16X16 32X32 64X64 ports.

[Contact Us](#)



Campus Switches RG-SF2920-16GT2SFP-P 16-Port GE All-Optical PoE Switch

RG-SF2920-16GT2SFP-P 16-Port GE All-Optical PoE Switch, 2 × Gigabit Uplink Optical Ports Various port combinations, rate increase, installation in a concealed telecommunication box, recommended

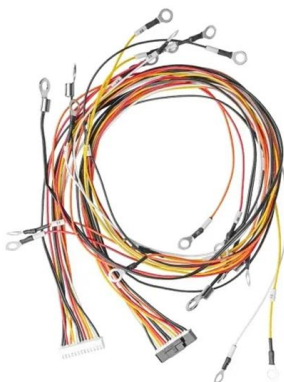
[Contact Us](#)



16 × 16 Silicon Optical Switch Based on Dual-Ring-Assisted

In this paper, we report a nanosecond 16 × 16 silicon electro-optic switch chip based on a Benes architecture. The switch adopts dual-ring-assisted Mach-Zehnder interferometers as the basic

[Contact Us](#)





Mitsubishi Electric develops fast 16-way optical switch

Engineers at Mitsubishi Electric Corp. have developed a 16-way optical cross-connect switch for use in metropolitan-area fiber networks that they say is capable of operating faster than

[Contact Us](#)

50KW modular power converter



- Flexible Configuration**
 - Modular Design, Expanding as Required
 - Small/Light, Wall Mounted
 - Installed in Parallel for Expansion
- Powerful Function**
 - Support PV/ESS
 - Grid Support, Equipped with SVG Technology
 - On-Grid and Off-Grid Operation
- Reliable Protection**
 - Outdoor IP65 Design
 - Sufficient Protection Functions Equipped

HUIJUE G7615 OPTICAL SWITCHING Datasheet, PDF

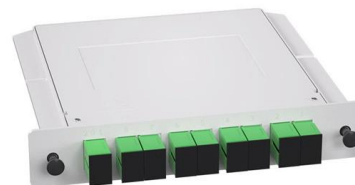
HUIJUE G7615 OPTICAL SWITCHING null, HUIJUE G7615 OPTICAL SWITCHING datasheet free, HUIJUE G7615 OPTICAL SWITCHING PDF, HUIJUE G7615 OPTICAL SWITCHING buy price,

[Contact Us](#)



Campus Switches RG-SF2920-16GT2MG2XS-P 16-Port GE All-Optical

RG-SF2920-16GT2MG2XS-P 16-Port GE All-Optical PoE Switch, 2 x 5G Electrical Ports (Backward Compatible) Various port combinations, rate increase, installation in a concealed telecommunication



[Contact Us](#)

1x16 Mechanical Fiberoptic Switch

1x16 Mechanical Fiberoptic Switch ACP's MS Series switch connects optical channels by redirecting an incoming optical fiber. This is achieved using a patent pending opto-mechanical proprietary

[Contact Us](#)





Ultra-low-power consumption silicon electro-optic switch

Ultra-low-power consumption and high-speed integrated switches are highly desirable for future data centers and high-performance optical computers.

[Contact Us](#)



High-speed silicon-integrated photonic radio frequency switch based

Photonic radio frequency (RF) switches are promising to replace conventional electronic RF switches in modern RF communication systems owing to their high switching speed and immunity to

[Contact Us](#)

SOI High Speed Optical Switch Array

SOI High Speed Optical Switch A Chip-based multi-channel optical switch array is a product based on SOI platform, which could realize high-speed dynamic

[Contact Us](#)



Non-Hermitian hybrid silicon photonic switching

An on-chip, high-bandwidth-density non-Hermitian hybrid switching network based on the integration of III-V and silicon materials is demonstrated, paving the way for compact and ultrafast

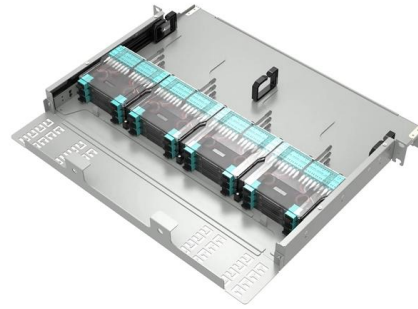
[Contact Us](#)



Germanium: Ultrafast Optical Switch for High-Speed Tech

Germanium: Ultrafast Optical Switch for High-Speed Tech Waseda University Opaque materials can transmit light when excited by a high-intensity laser beam. This process, known as

[Contact Us](#)



16 x 16 Silicon Optical Switch Based on Dual-Ring-Assisted

In this paper, we report a nanosecond 16 x 16 silicon electro-optic switch chip based on a Benes architecture. The switch adopts dual-ring-assisted Mach-Zehnder interferometers as the basic

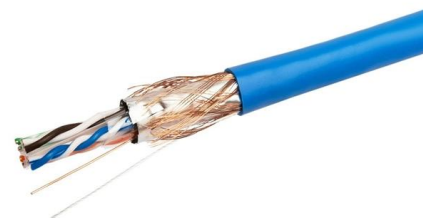
[Contact Us](#)



15 best optical switches for your keyboards (Expert)

Want to switch to the best optical switches for the fastest and smoothest pace on gaming? Then, don't miss these tried-and-true 15 top choices!

[Contact Us](#)



Campus Switches RG-SF2920-16GT2MG2XS 16-Port GE All-Optical Switch

RG-SF2920-16GT2MG2XS 16-Port GE All-Optical Switch, 2 x 2.5G Electrical Ports (Backward Compatible) Various port combinations, rate increase, installation in a concealed telecommunication

[Contact Us](#)



ICT Infrastructure , Leading Network Server Cabinet,

Continuous research and development, participation in industry standards, and understanding of market trends and key influencing factors have enabled Huijue

[Contact Us](#)



HJ Optical Fiber Distribution Box Pre-Connected type 16 Cores

HJ Optical Fiber Distribution Box Pre-Connected type 16 Cores / Customized capacity HUIJUE has launched its pre-connectorized ODN solution to enable efficient and low-cost

[Contact Us](#)

Optical Switching Basics: Types and Technologies

Explore the fundamentals of optical switching, including space, wavelength, time, and hybrid switching techniques. Learn about core components and applications.

[Contact Us](#)



16 & #x00D7; 16 non-blocking silicon optical switch based on electro

As our 16 × 16 optical switch has an operation bandwidth of 30 nm, it can simultaneously switch multiple dense wavelength-division-multiplexing (DWDM) channels.

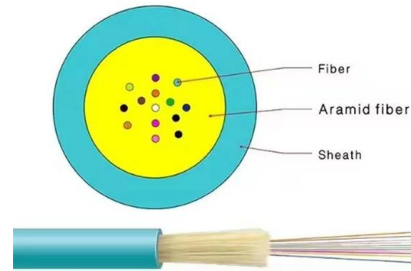
[Contact Us](#)



Optical Switches: N7733C , Keysight

The N7733C is a 1x16 switch, ideal to connect a device under test with up to 16 ports, or to measure up to 15 devices while using one port as a reference path.

[Contact Us](#)



Magneto Optical Switch Fiber Switch Design

MEISU's magneto-optical switch uses the faraday magneto-optical effect to change the polarization plane and switch the optical paths. It has the advantages of fast

[Contact Us](#)

Contact Us

For datasheets, pricing, or custom fiber access solutions, please visit:
<https://frindel.es>