

Hub card optical module





Hub card optical module



What Is an Optical Module and Its FAQs (V200)

What Is an Optical Module and Its FAQs (V200) Describes what an optical module is and FAQs, including the fundamentals, appearance and structure, key performance counters, common types,

[Contact Us](#)



LED HUB Card : LED Displays, Screens, Panels, Walls, Curtains,

LED HUB card, LED adapter board is designed to allocate the signal of receiving card to LED display modules. It supports the vast majority of LED display boards by adopting standard interface.

Powering Optical Modules

Powering the Optical transceivers & Hardware used in the most advanced Telecom and Datacom Infrastructure Solutions for All Optical Modules for Today's and

[Contact Us](#)



Blackmagic Design Universal Videohub Optical Interface

The Blackmagic Design Universal Videohub Optical Interface features 4 optical fiber SDI inputs and 4 optical fiber SDI outputs on a single interface card, re-clocking in SD, HD, and 3 Gb/s. 1310 nm laser

[Contact Us](#)



FIBER DISTRIBUTION HUB SYSTEMS GUIDE

The Fiber Distribution Hub is designed to provide maximum versatility by accommodating a variety of fiber connectivity modules, such as PON/MPO/ Splice cassettes, adapter plates, optical splitters and

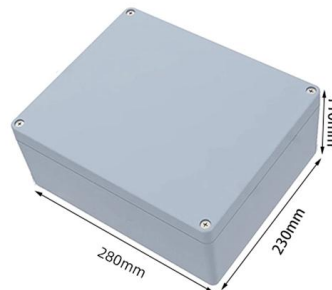
[Contact Us](#)



Installing Optical Transceivers and Connecting Optical Fibers

Before connecting optical fiber cables, read the following precautions: Do not overbend optical fibers, and the radius should not be shorter than 40 mm. Do not bundle the optical fibers too tight.

[Contact Us](#)



Optical Module PCB: The Ultimate Guide to Design, Fabrication, and

This guide serves as an in-depth resource for engineers, designers, and project managers involved in the development of optical module PCBs. It will explore the complete product lifecycle, from design

[Contact Us](#)





Gigabit SFP optical transceiver modules

Although a 10G SFP+ transceiver module has the same physical dimensions of a 1G SFP transceiver, a 10G transceiver will NOT operate in a 1G SFP port. Many, although not all, 10G SFP+ ports have

[Contact Us](#)



Understanding Optical Modules

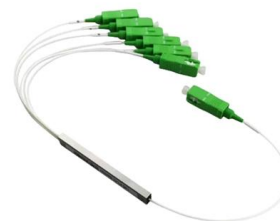
If an optical module is installed in a running device, you can run the display transceiver command to view parameters of the optical module, including the center wavelength, transmission distance, fiber

[Contact Us](#)

Blackmagic Videohub Optical Interface 4 I/O, 25km

The Blackmagic Design Universal Videohub Optical Fiber Interface The Universal Videohub Optical Fiber Interface: a hot-swappable card module for use with the

[Contact Us](#)



SFP Module: What's It and How to Choose It?

The SFP transceiver module is not standardized by any official standards body but rather by a multi-source agreement (MSA). Optical

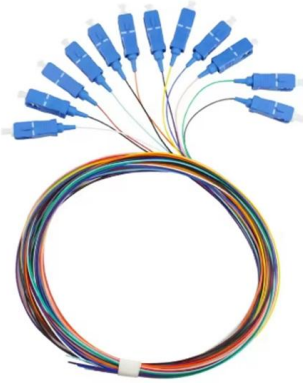
[Contact Us](#)



Optical Module: Typical Optical Module Troubleshooting Procedure

Check the model of the faulty optical module. If it is not a Huawei-certified optical module, replace it with a Huawei-certified optical module. If the optical module is installed on a GE port, run the display

[Contact Us](#)



25G Multi-Mode Optical Module

SFP28 transceiver that supports 25G connections up to 100 m using multi-mode fiber with a duplex LC UPC connector.

[Contact Us](#)

GigaWave Opti-HUB

The GigaWave ® Opti-HUB is a modular, environmentally hardened optical signal management and distribution platform designed to support the next-generation

[Contact Us](#)



PCI-E to USB 3.0 Card Over Fiber Optic Extension to 4 Ports USB 3.0 hub

Buy Transwan PCI-E to USB 3.0 Card Over Fiber Optic Extension to 4 Ports USB 3.0 hub, USB 3.0 PCIe Fiber Extender Over Max 250 Meters 1 core Single-Mode Fiber, with 10Gbps SFP Module:

[Contact Us](#)





Which LED Display HUB will I need? - LED-CARD

Which HUB will I need, we can see some details from the LED display 1. Get the HUB name or define from the LED display supplier. 2. From the back of

[Contact Us](#)



Troubleshooting Optical Module Issues

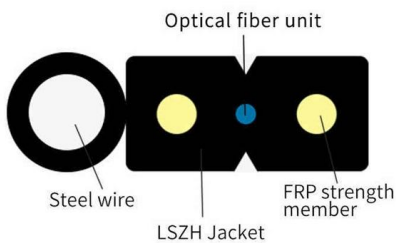
Troubleshooting Optical Module Issues Symptom An optical port cannot go Up. The optical module cannot be properly identified and optical module information cannot be obtained. After

[Contact Us](#)

Model GS7000 Optical Hub Data Sheet

A fully configured Model GS7000 Optical Hub can combine narrowcast/broadcast using up to 64 wavelengths, providing forward and reverse

[Contact Us](#)



Everything You Need to Know About GPON SFP

Learn all about GPON SFP modules, from installation at central offices to customer premises. Upgrade your network with cost-effective and

[Contact Us](#)



Everything You Need to Know About Optical Modules

Optical modules are electronic devices used in communication systems to transmit optical signals. These modules convert electrical signals into optical

[Contact Us](#)



HUB75 LED Hub Card -- HUB75 Pin Mapping & Signal Hub

The HUB75 LED Hub Card provides standard HUB75 pin mapping and signal assignment for receiver systems, simplifying wiring, grounding, and troubleshooting of HUB75 LED modules.

[Contact Us](#)



SFP modules - transceivers for 1/2/4G fibre channel

An SFP (Small Form-factor Pluggable) transceiver is a compact optical module designed for high-speed networking applications across enterprise, data center

[Contact Us](#)



How To Read Optical Module Information On A Network Card In Linux

In addition to independent devices such as switches and routers, optical modules can also work on network adapters (commonly known as network cards). For optical modules used on

[Contact Us](#)





Amazon : Transwan PCI-E Card to 4 Port USB 3.0

PCI-E Card to 4 Port USB 3.0 Hub Fiber Optic Extender over Max 250 Meters (820FT) 2 Cores Single-mode Fiber w/ 10Gbps SFP, Super Speed up to 5 Gbps,

[Contact Us](#)



WebiTelecomms Cabling



- 50KW/100KWH
- HIGHER POWER OUTPUT IN OFF-GRID MODE
- CONVENIENT OPERATION & MAINTENANCE
- PRE-WIRED

Fiber Distribution Hub (FDH)

The OCC Fiber Distribution Hub (FDH) is designed to provide maximum versatility by accommodating a variety of fiber connectivity modules, such as PON/MPO/Splice

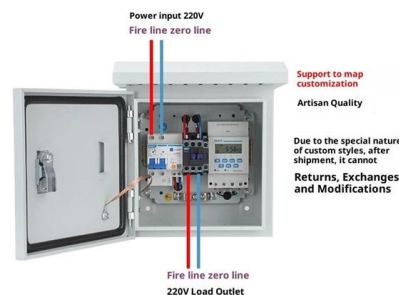
[Contact Us](#)

Offizieller BlueOptics SFP Hersteller

Kaufen Sie BlueOptics SFP, SFP+, QSFP und QSFP28 Transceiver, DAC und AOC Kabel direkt ab Lager. Versand heute.

[Contact Us](#)

Product Wiring Diagram



Cisco Optical Services Modules

Configure, operate, and troubleshoot your Cisco products with configuration guides, installation guides, release notes, and more. Get self-service access to security, data privacy, and compliance

[Contact Us](#)

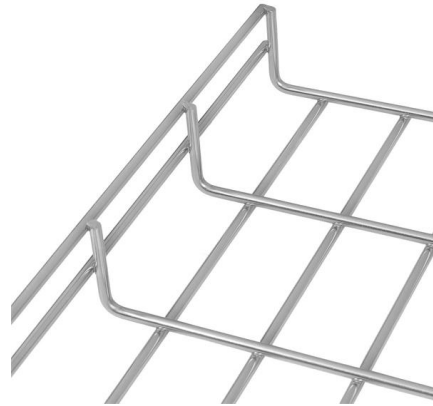




What Is an SFP Module and How to Choose It? (2026)

An SFP module is the building block of scalable and adaptable optical networking. Whether you're dealing with 1G Ethernet or exploring 100G QSFP28

[Contact Us](#)



The Ultimate Guide to SFP Modules (2026): Types,

Read the definitive 2026 guide on SFP modules. We explain Single Mode vs Multimode, DDM diagnostics, and how to choose the right transceiver for Cisco,

[Contact Us](#)

Contact Us

For datasheets, pricing, or custom fiber access solutions, please visit:
<https://frindel.es>