

# **Huawei optical module speed configuration**





## Huawei optical module speed configuration

---

190X95X25mm



### How to Know Optical Power SFP-Detail Link-Details

Hello friends, Welcome to Technical Hakim In this tutorial, we will learn how to verify port type, speed, link status, port optical rx and tx more.

[Contact Us](#)

### Optical Modules for Huawei S Series Switches

10GE or Lower Speed Optical Modules Huawei started certification on 10GE or lower speed optical modules for switch products on July 1, 2013. To determine whether optical modules delivered for

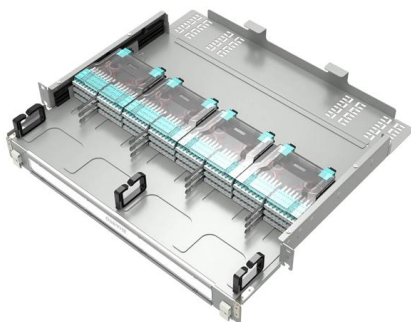
[Contact Us](#)



### How to Know Optical Power SFP-Detail Link-Details & Port

Hello friends,Welcome to Technical HakimIn this tutorial, we will learn how to verify port type, speed, link status, port optical rx and tx optics power, sfp

[Contact Us](#)



### Troubleshooting for Optical Modules on Huawei Switch

When this optical module uses OM3 multimode optical fibers, its transmission distance is 0.3 km. The optical modules used on both ends must have the same



### 200G Optical Module Market 2025

**MARKET INSIGHTS** The global 200G Optical Module Market was valued at 2625 million in 2024 and is projected to reach US\$ 4991 million by 2032, at a CAGR of 9.9% during the forecast period. 200G

[Contact Us](#)



### Optical Module Solutions for Huawei S5700/S5720 Series Switches

This article summarizes several solutions for using optical modules with switches and common problems encountered during usage, along with specific solutions.

[Contact Us](#)



### Displaying Optical Module Information

If the connected optical modules have the same wavelength and provide short-distance transmission but alarms indicating low or high optical power occur, the two optical modules may be from different

[Contact Us](#)



## Huawei Optical Switch View Optical Module Commands

Taking the Huawei 5700 series switches as an example, the commands to view optical module information are as follows:

[Contact Us](#)



## How To Read Optical Module Information On Huawei Switches

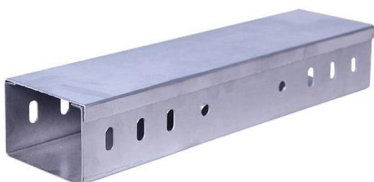
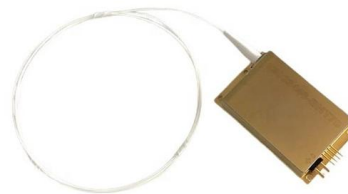
The following uses the Modulatek SFP-10G-LR module connected to a Huawei S6700 switch as an example to introduce how to read information of the connected optical module on a Huawei switch.

[Contact Us](#)

## Checking the Optical Module

Check whether the transmission distance and fiber type of the optical module meet the requirements. Use an optical power meter to test the optical power attenuation of each part of the link and fix the

[Contact Us](#)



## Troubleshooting Optical Module Issues

Troubleshooting Optical Module Issues Symptom  
An optical port cannot go Up. The optical module cannot be properly identified and optical module information cannot be obtained. After

[Contact Us](#)



## Constructing Intelligent Ultra-High-Speed

This allows the module to accurately detect all optical-layer network status parameters in real time for AI analysis and calculation at the control layer and enables carriers to pre-warn, schedule, configure,

[Contact Us](#)



## HUAWEI OSN 3500 TECHNICAL MANUAL Pdf

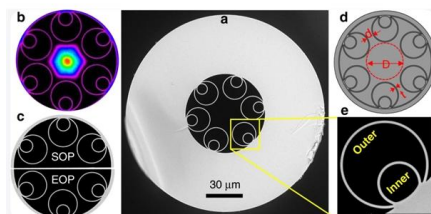
View and Download Huawei OSN 3500 technical manual online. STM-64/STM-16 Intelligent Optical Transmission Platform. OSN 3500 multiplexer pdf manual

[Contact Us](#)

## Configuring Attributes for Ethernet Optical Interfaces

To ensure that the interface works properly, you are advised to use Huawei-certified optical modules. A 40GE or 100GE high-speed cable is pre-configured as the medium type for 400GE interfaces on a

[Contact Us](#)



## Checking the Interface Status and Configuration Parameters

If a message is displayed, indicating that the optical module is not in position, remove and then properly insert the optical module. If the auto-negotiation mode is used but the interface cannot go Up, set the

[Contact Us](#)



## Configuring Attributes for an Optical Interface

Both the local and remote interfaces do not need to have optical modules installed. The 40GE interface can be connected to four 10GE interfaces on the remote device using a 1-to-4 40GE optical module

[Contact Us](#)



## What Can I Do If a Message Is Displayed Indicating that an Optical

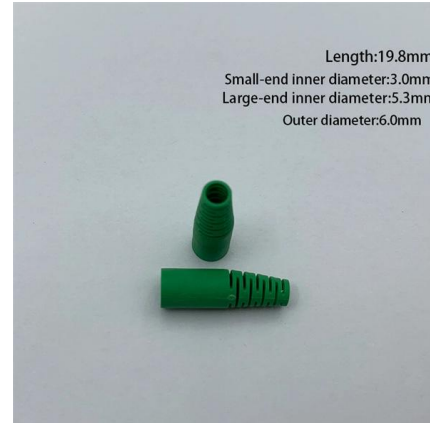
This field indicates whether the rate of the optical module installed on the port matches the port rate. For example, if a non-XGE optical module is installed on an XGE port, the rate of the optical module

[Contact Us](#)

## Configuring Attributes for an Optical Interface

If the pre-configured transmission medium is a high-speed cable but an optical module is installed, the optical module may be burned. Ensure that the installed transmission medium is the

[Contact Us](#)



## How To Read Optical Module Information On Huawei Switches

The output includes interface rate, module type, link status (the state being UP is a prerequisite for normal operation) and traffic statistics, which can be used for troubleshooting.

[Contact Us](#)



## Troubleshooting for Optical Modules on Huawei Switch

The optical modules used on both ends must have the same transmission speed, and the interface configurations on both ends must comply with related protocols.

[Contact Us](#)



### Displaying Optical Module Information

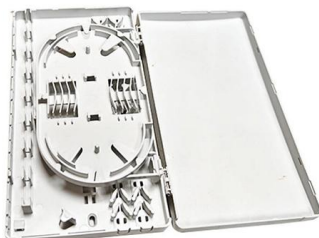
To determine whether optical modules delivered for Huawei S switches before January 1, 2016 are certified ones, contact Huawei technical support. If your optical modules are delivered after January

[Contact Us](#)

### Displaying Optical Module Information

When certifying an optical module, Huawei comprehensively verifies the functions of the optical module to ensure the optical module quality. The functions include the installation and removal, transmit and

[Contact Us](#)



### Displaying Optical Module Information

Displaying Optical Module Information You can use the display commands to view information about the optical module on an interface, including conventional information, manufacturing information, and

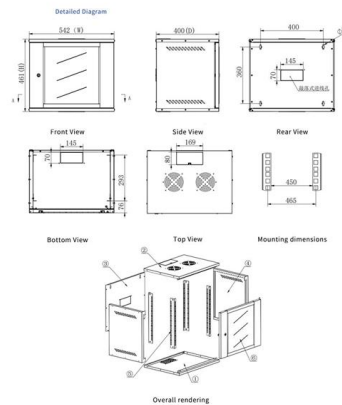
[Contact Us](#)



## Displaying Optical Module Information

For the optical modules connected to high-speed cables or AOC cables, the Vendor Name field displays the original manufacturer name, instead of HUAWEI. For the methods of checking whether such an

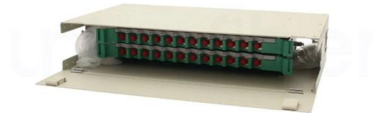
[Contact Us](#)



## Optical Module Solutions for Huawei S5700/S5720 Series Switches

When using switches, we may encounter many confusions, such as what types of optical modules are needed for different models of Huawei switches, and how to resolve issues encountered

[Contact Us](#)



## Contact Us

---

For datasheets, pricing, or custom fiber access solutions, please visit:  
<https://frindel.es>