

Huawei optical module has several interfaces





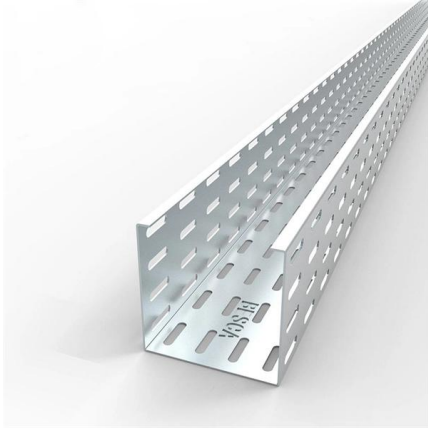
Overview

Huawei switches support optical modules of the following encapsulation types: CFP, QSFP+, QSFP28, XFP, SFP, eSFP, and SFP+. An optical module is a component that completes electrical/optical conversion on an optical network. The verified items include optical module plug/unplug, transmit optical power, receive optical power, signal transmission quality, data reading, error tolerance, compatibility, electromagnetic compatibility (EMC), and environmental parameters. During use, reading optical module information helps understand its real-time operating status, enabling faster troubleshooting of link abnormalities. [How to Configure Optical Ports on Huawei S5720-32P-EI-AC Switch?](#)

Problem: All optical ports cannot be.



Huawei optical module has several interfaces



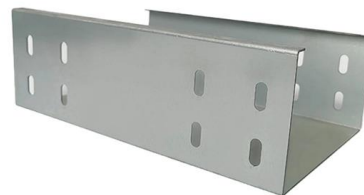
Displaying Optical Module Information

Run the display transceiver diagnosis interface [interface-type interface-number] command to view diagnostic information about a specified optical module. This command displays the digital diagnostic

[Contact Us](#)

01-10 PLUGGABLE MODULES FOR INTERFACES

If an optical module is installed in a running device, you can run the display transceiver command to view parameters of the optical module, including the center wavelength, transmission distance, fiber



[Contact Us](#)



Pluggable Modules for Interfaces

When such an optical module is installed on an optical interface, the size of this optical module hinders optical module installation on adjacent optical interfaces.

[Contact Us](#)

Displaying Optical Module Information

Displaying Optical Module Information Context
When the optical module on an interface is faulty, you can run the display commands to view information about the optical module.

[Contact Us](#)



Understanding Optical Modules

Huawei S series devices support optical modules of the following encapsulation types: CFP, QSFP+, QSFP28, XFP, SFP, eSFP, and SFP+. All optical modules are hot swappable. SFP: small form

[Contact Us](#)

GPFD Service Board GPFD price and specs epfd

As a large, medium and small series of products, several products have a total of software platforms and service boards. SmartAX MA5680T / MA5683T /

[Contact Us](#)



Compatibility Analysis of Optical Modules: Covering Global

To ensure seamless connection between optical modules and devices, ETU-Link has invested a lot of resources to build a multi-brand switch verification laboratory. The testing process

[Contact Us](#)



Troubleshooting Optical Module Issues

Run the display esn interface command to check whether the optical module is a Huawei-certified one. If the Certified field is displayed YES, the optical module is a certified one.

[Contact Us](#)



Waterproof and dustproof, reliable and safe

The outer classic sink design allows the sealing ring of the cabinet and door to be seamlessly compressed without leaving a trace of gaps



How To Read Optical Module Information On Huawei Switches

The following uses the Moduletek SFP-10G-LR module connected to a Huawei S6700 switch as an example to introduce how to read information of the connected optical module on a Huawei switch.

[Contact Us](#)

01-09 PLUGGABLE MODULES FOR INTERFACES

When two optical interfaces have copper modules installed, the interfaces can be connected using a copper cable. Currently, Huawei offers GE copper modules and 10GE copper modules with RJ45

[Contact Us](#)



Optical Modules in Intelligent Computing Scenarios

Huawei provides a full series of pluggable optical modules. A wide variety of modules give you flexible plug-and-play options for all types of interfaces.

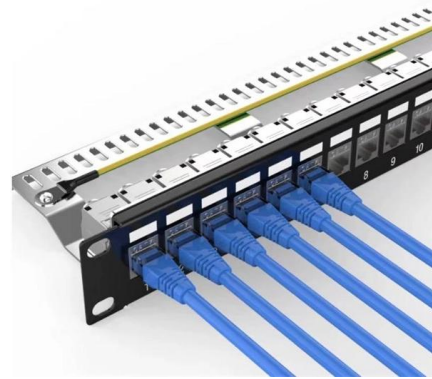
[Contact Us](#)



Optical Module Solutions for Huawei S5700/S5720 Series Switches

When using switches, we may encounter many confusions, such as what types of optical modules are needed for different models of Huawei switches, and how to resolve issues encountered

[Contact Us](#)



Understanding 5G Communication Optical Transceivers:

Explore the role of optical modules in 5G communication, including their types, features, and deployment in fronthaul, midhaul, and backhaul networks.

[Contact Us](#)

Global Optical Module Market Research Report

An optical module, formally known as an Optical Transceiver, is a core component in optical communications. It enables the conversion between optical and electrical signals. The module

[Contact Us](#)



Understanding Pluggable Optical Modules

DWDM and CWDM modules are used for long-distance transmission. The transmit power of a long-distance optical module is often larger than its overload power. Therefore, when using such optical

[Contact Us](#)

Optical Module: Typical Optical Module



Troubleshooting Procedure

Check the model of the faulty optical module. If it is not a Huawei-certified optical module, replace it with a Huawei-certified optical module. If the optical module is installed on a GE port, run the display

[Contact Us](#)



How To Read Optical Module Information On Huawei Switches

Optical modules are widely used in switches, network interface cards (NICs), routers, and other communication devices. During use, reading optical module information helps understand its real

[Contact Us](#)

Huawei Campus Optical Module Portfolio

When two optical interfaces have copper modules installed, the interfaces can be connected using a copper cable. Currently, Huawei offers only GE copper modules with RJ45 interfaces.

[Contact Us](#)



Checking the Optical Module Type

The selected optical modules must be supported by the optical interfaces. Check whether the optical module used on the switch is certified by Huawei switches. For the Huawei-certified optical modules,

[Contact Us](#)



Understanding Optical Modules

Understanding Optical Modules Appearance and Structure of an Optical Module Types of Optical Modules Optical Module Terms Rules for Optical Module Interoperation

[Contact Us](#)



Optical Module Troubleshooting

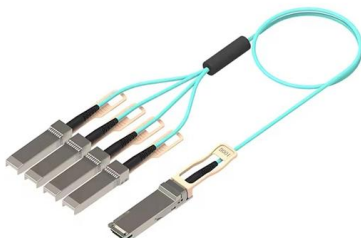
Interfaces that use optical modules that are not certified for Huawei data center switches may be unable to go Up. If an optical module that is not certified for Huawei data center switches is used, replace it

[Contact Us](#)

The Ultimate Guide to SFP Modules (2026): Types,

Confused by SFP vs SFP+? Read the definitive 2026 guide on SFP modules. We explain Single Mode vs Multimode, DDM diagnostics, and how to choose the right

[Contact Us](#)



8 Pluggable Modules for Interfaces

When two optical interfaces have copper modules installed, the interfaces can be connected using a copper cable. Currently, Huawei offers only GE copper modules with RJ45 interfaces.

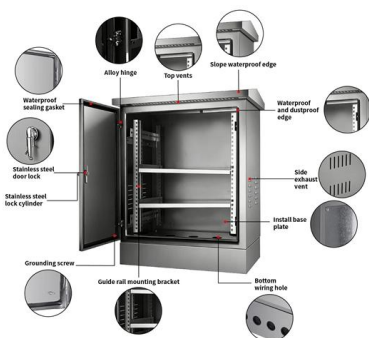
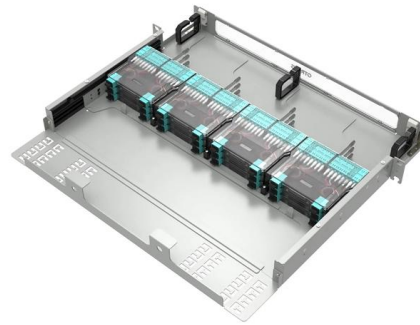
[Contact Us](#)



Checking Whether the Optical Fiber and Optical Module

Check the optical module type. Generally, an optical module has a label attached, identifying the rate, center wavelength, and mode (single-mode or multimode) of

[Contact Us](#)



Understanding Optical Modules

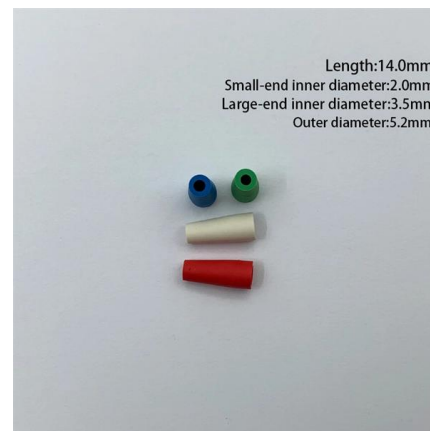
On an optical network, a sender needs to convert electrical signals into optical signals before sending them to a receiver, and the receiver needs to convert received optical signals into electrical signals.

[Contact Us](#)

IdeaHub Board 2 , Education Display , Huawei Enterprise

HUAWEI IdeaHub Board 2 education display integrates teaching hardware and a software ecosystem to provide a one-stop smart classroom solution. Discover it.

[Contact Us](#)



Understanding Optical Modules

Therefore, optical modules are also classified into single-mode and multimode modules to support different optical fibers. Single-mode optical modules are used with single-mode fibers.

[Contact Us](#)





Contact Us

For datasheets, pricing, or custom fiber access solutions, please visit:
<https://frindel.es>