

# **Huawei mm850s Gigabit Optical Module**





## Overview

---

The SFP-GE-SX-MM850 is a Small Form-Factor Pluggable (SFP) transceiver module designed for gigabit Ethernet applications. This specific model provides multimode fiber connectivity, making it suitable for short-distance data transmission. Product Code eSFP-GE-SX-MM850 Transceiver form factor eSFP Transmission speed GE Center wavelength (nm) 850 Standard compliance 1000base-SX Connector type LC Applicable cable and maximum transmission distance · Multimode fiber (with modal bandwidth of 160 MHz\*km and diameter of 62.



## Huawei mm850s Gigabit Optical Module

---



### **eSFP-GE-SX-MM850 Datasheet**

Huawei eSFP-GE-SX-MM850 is Optical Transceiver. It's a Multi-mode Module. Quick Specs. Table 1 shows the Quick Specs.

[Contact Us](#)

### **Huawei GE Optical Modules**

Buy genuine Huawei GE optical modules from GenuineModules with best price and fast worldwide shipping.

[Contact Us](#)



### **Huawei Optical Transceiver eSFP-GE-SX-MM850**

Enhance your network with the Optical Transceiver ESFP GE Multi-Mode Module ideal for short-range, high-speed Gigabit Ethernet connectivity.

[Contact Us](#)

### **eSFP-GE-SX-MM850 (02315204)**

Huawei compatible eSFP-GE-SX-MM850 (02315204) is SFP (Small Form factor Pluggable) Transceiver, operating over Double Fiber Multi-Mode Fiber (MMF) optical cable. It has minimum guaranteed



### 10 Gbit/s SFP+ Optical Modules

You can use different levels of 10 Gbit/s SFP+ optical modules only with 10 GE interfaces. The wavelength of these 10 Gbit/s SFP+ optical modules can be 850 nm, 1310 nm, or 1550 nm, and the

[Contact Us](#)



### SFP+ 10G Module HW OMXD30000

SFP+ 10G Module HW OMXD30000 Optical Transceiver offers 850nm, 0.3km, LC connectivity for HU AWEI ME60 series router. Ideal for enterprise telecommunication., Alibaba

[Contact Us](#)



### eSFP-GE-SX-MM850, Huawei eSFP Optical

Huawei ESFP-GE-SX-MM850 eSFP 1GE 850nm multi-mode 0.5km LC optical transceiver for Huawei switches and routers. Check stock, request quote,

[Contact Us](#)



### Huawei ESFP-GE-SX-MM850: SFP module

The Huawei ESFP-GE-SX-MM850 is an SFP (Mini-GBIC) transceiver module designed for use in networks. It supports Gigabit Ethernet technology with a data transfer rate of up to 1 Gbps. This

[Contact Us](#)



### Huawei ESFP-GE-SX-MM850 Optical Transceiver LC

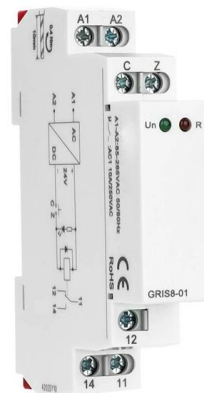
The SFP-GE-SX-MM850 is a Small Form-Factor Pluggable (SFP) transceiver

[Contact Us](#)

### Optical Modules in Intelligent Computing Scenarios

In the AI era, Huawei provides a full range of GE to 800GE optical modules, featuring three major capabilities: Spanning (ultra-long transmission), Stable (ultra-high reliability), and Secure (ultra-solid

[Contact Us](#)



### Huawei ESFP-GE-SX-MM850 network transceiver module Fiber optic

This short summary of the Huawei ESFP-GE-SX-MM850 network transceiver module Fiber optic 1000 Mbit/s SFP 850 nm data-sheet is auto-generated and uses the product title and the first six key specs.

[Contact Us](#)





### Huawei SFP Optical Module Esfp-Ge-Sx-mm850 Gigabit

Our core offerings include lithium-ion batteries, lithium-ion battery packs, and energy-storage battery systems. These products are designed to meet the ever

[Contact Us](#)



### Huawei eSFP-GE-SX-MM850 Optical Transceiver,eSFP,GE,Multi-mode Module

Huawei eSFP-GE-SX-MM850 Optical Transceiver,eSFP,GE,Multi-mode Module (850nm,0.55km,LC) Price in Dubai UAE

[Contact Us](#)



### Huawei SFP-GE-SX-MM850 Datasheet , FluxLight

HUAWEI COMPATIBLE SFP-GE-SX-MM850 Quick Spec: HUAWEI COMPATIBLE SFP-GE-SX-MM850 Features Up to 1.25Gb/s data links Hot-pluggable SFP Footprint Compliant with

[Contact Us](#)



### Optical Modules for Huawei S Series Switches

A switch must use optical or copper modules that have been certified for use on Huawei switches. Non-certified optical or copper modules cannot ensure transmission reliability and may affect service

[Contact Us](#)





### Huawei SFP Optical Module Esfp-Ge-Sx-mm850 Gigabit

Huawei SFP Optical Module Esfp-Ge-Sx-mm850 Gigabit Multi Mode SFP-Ge-Lx-Sm1310 Gigabit Single Mode 02315204 US\$0.10-7.50 50 Pieces (MOQ) Send

[Contact Us](#)



### ESFP-GE-SX-MM850-C Datasheet(PDF)

It is a hot-swappable input/output device that plugs into a Gigabit Ethernet port/slot, linking the port with the fibre-optic network. Our product meets the specification of Huawei ESFP-GE-SX-MM850= and

[Contact Us](#)



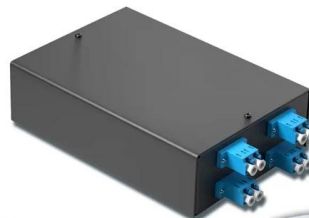
### Huawei eSFP-GE-SX-MM850 Compatible 1000BASE

Huawei eSFP-GE-SX-MM850 compatible optical transceiver is a dual fiber 1000Mbps Small Form-factor Pluggable SFP module for use in 1000BASE

[Contact Us](#)

4-port 8-core LC wall-mounted fiber terminal box (empty frame)

Surface painted    Scientific plate fiber    Cold-rolled steel plate



Lifetime quality assurance

Free shipping

Customizable for telecommunications

### Huawei eSFP-GE-SX-MM850 Gigabit Optical Module Overview

The eSFP-GE-SX-MM850 optical module is a Huawei Gigabit multimode optical module with DOM/DDM support, which is packaged in an SFP package with a center wavelength of 850 nm.

[Contact Us](#)





## eSFP-GE-SX-MM850

The Huawei Optical Transceiver, eSFP, GE, Multimode Module (850 nm, 0.5 km, LC) is guaranteed 100% Compatible and Functional in its intended equipments. Every eSFP-GE-SX-MM850 is

[Contact Us](#)



## ATGBICS ESFP-GE-SX-MM850-C network transceiver module Fiber optic

It is a hot-swappable input/output device that plugs into a Gigabit Ethernet port/slot, linking the port with the fibre-optic network. Our product is built to the exact specification of Huawei ESFP-GE-SX

[Contact Us](#)

## 1.25 Gbit/s SFP/eSFP Optical Modules

HUAWEI USG9500 Series V300, V500 Hardware Guide 1.25 Gbit/s SFP/eSFP Optical Modules You can use different levels of 1.25 Gbit/s SFP/eSFP optical modules with GE interfaces and 10 GE

[Contact Us](#)



## Dahua GSFP-850-MMF Gigabit Optical Module

Ensure fast, reliable data transfer with the Dahua GSFP-850-MMF, a gigabit optical module using LC ports and multi-mode fiber up to 550 m.

[Contact Us](#)



### Huawei eSFP-GE-SX-MM850 Optical Transceiver

Original Huawei eSFP-GE-SX-MM850 optical transceiver for 1Gbps networks. 850nm wavelength, 0.5km multimode fiber range, LC connector, 0-70°C

[Contact Us](#)



### FTTH BOOK-TYPE TERMINAL BOX

Sleek Design. Reliable Connectivity.

COMPACT & DURABLE

EASY INSTALLATION

### Huawei eSFP-GE-SX-MM850 02313URD Optical

News Huawei eSFP-GE-SX-MM850 02313URD Optical Transceiver,eSFP,GE,Multi-mode Module (850nm,0.55km,LC) The Huawei eSFP GE SX MM850 02313URD Optical Transceiver is a compact,

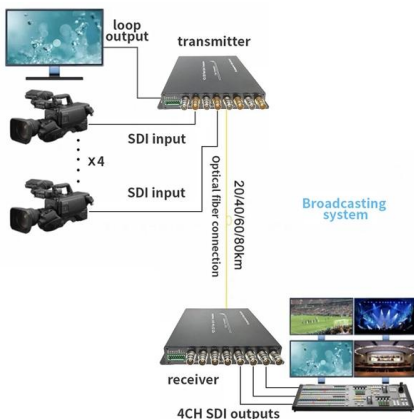
[Contact Us](#)

### 10 Gbit/s XFP Optical Module

HUAWEI AntiDDoS8000 V500R005 Hardware Description 10 Gbit/s XFP Optical Module You can use different levels of 10 Gbit/s XFP optical modules with OC-192/STM-64 POS interfaces



[Contact Us](#)



### Dahuasecurity

Hier sollte eine Beschreibung angezeigt werden, diese Seite lässt dies jedoch nicht zu.

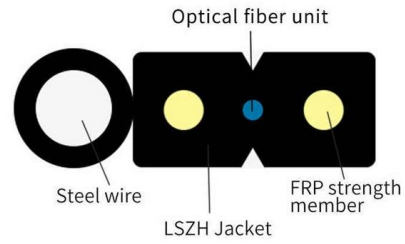
[Contact Us](#)



## Huawei eSFP-GE-SX-MM850 Optical Transceiver Module

Original Huawei eSFP transceiver for GE networks, 850nm wavelength, 0.5km range with LC connector. Compatible with S5700/S5720 switches.

[Contact Us](#)



## Contact Us

---

For datasheets, pricing, or custom fiber access solutions, please visit:  
<https://frindel.es>