

Huawei Switch Serial Optical Port Module





Huawei Switch Serial Optical Port Module

FAQs About Optical Modules



The switch must have optical modules certified for Huawei switches installed. Optical modules that are not certified for Huawei switches cannot ensure transmission reliability and may affect service

[Contact Us](#)

Teach you to read the DDM information of the optical

The following picture is the optical module information queried on the Huawei switch, which is marked with the Chinese translation of the Optical

[Contact Us](#)



Checking the Optical Module Type

The selected optical modules must be supported by the optical interfaces. Check whether the optical module used on the switch is certified by Huawei switches. For the Huawei-certified optical modules,

[Contact Us](#)

Optical Modules for Huawei S Series Switches

A switch must use optical or copper modules that have been certified for use on Huawei switches. Non-certified optical or copper modules cannot ensure transmission reliability and may affect service



Huawei enterprise switches

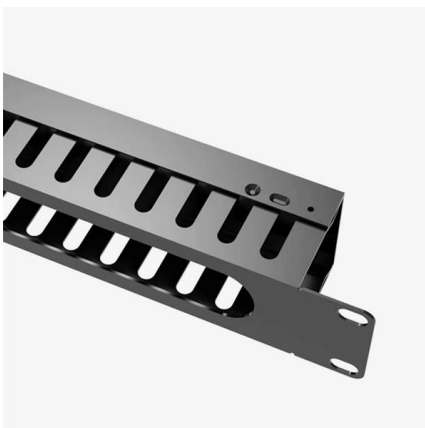
Huawei switches using non-certified optical module may not be able to read the information, can not guarantee the accuracy of the information read, recommend the use of Huawei certified optical

[Contact Us](#)

Huawei Switches Viewing Optical Port Receiving and Sending

Use the command display transceiver to view the optical module information of all optical ports, and use the command display transceiver interface interface-type interface-number to view the

[Contact Us](#)



Troubleshooting for Optical Modules on Huawei Switch

When connecting switches through optical ports, pay attention to the following points: The optical modules used on both ends must have the same wavelength. The

[Contact Us](#)



Teach you to read the DDM information of the optical

Today, ETU-LINK will introduce how to query the information of optical module on Huawei switch. Next, we will introduce the query instructions of

[Contact Us](#)



Optical Module Solutions for Huawei S5700/S5720 Series Switches

When using switches, we may encounter many confusions, such as what types of optical modules are needed for different models of Huawei switches, and how to resolve issues encountered

[Contact Us](#)

how to display power of optical module

Let's take Huawei's S3328TP-SI switch as an example. This switch has 2 combo ports, which can be changed either to optical or electrical mode. display elabel

[Contact Us](#)



How To Read Optical Module Information On Huawei Switches

The following uses the Moduletek SFP-10G-LR module connected to a Huawei S6700 switch as an example to introduce how to read information of the connected optical module on a Huawei switch.

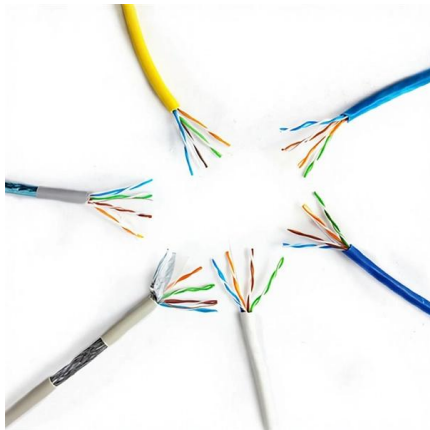
[Contact Us](#)



OPTICAL MODULES FOR HUAWEI S SERIES SWITCHES

A switch must use optical or copper modules that have been certified for use on Huawei switches. Non-certified optical or copper modules cannot ensure transmission reliability and may affect service

[Contact Us](#)



FAQ-How Do I View the Transmit and Receive Optical Power of an Optical

Fixed Switch V200R002& V200R003 The RX Power (dBm) field in the command output indicates the receive power of the optical module, and the TX Power (dBm) field indicates the

[Contact Us](#)

Troubleshooting for Optical Modules on Huawei Switch

If the transmit power remains low, replace the optical module or install it in another optical port to check whether it is faulty. If the optical module is faulty, send

[Contact Us](#)



SFP-10G-SR

Provides technical support and specifications for Huawei's SFP-10G-SR optical module.

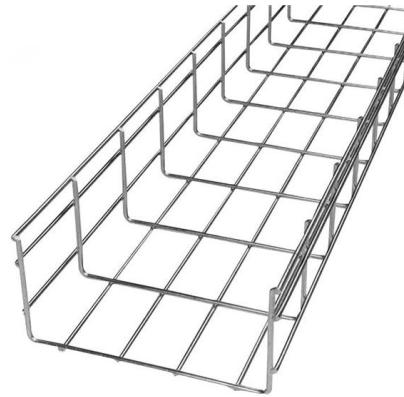
[Contact Us](#)



What Can I Do If a Message Is Displayed Indicating that an Optical

For example, if a non-XGE optical module is installed on an XGE port, the rate of the optical module does not match the port rate. In this case, replace the current optical module with a supported optical

[Contact Us](#)



Displaying Optical Module Information

A switch must use optical or copper modules that have been certified for use on Huawei switches. Non-certified optical or copper modules cannot ensure transmission reliability and may affect service

[Contact Us](#)

Displaying Optical Module Information

Obtain the electronic label of the optical module and contact Huawei technical support personnel to confirm whether it is a Huawei-certified switch optical module.

[Contact Us](#)



Huawei Optical Switch View Optical Module Commands

Taking the Huawei 5700 series switches as an example, the commands to view optical module information are as follows:

[Contact Us](#)



High-Performance Connectivity: The Definitive Guide to CQP-85100G

Discover the details of High-Performance Connectivity: The Definitive Guide to CQP-85100G-SR4 100G QSFP28 SR4 Optical Transceivers at LonRise Equipment Co. Ltd., a leading

[Contact Us](#)



Typical Troubleshooting Cases of Optical Module

Form a loop on the port using an optical fiber, and check whether the port can go Up (if optical modules with a long transmission distance are used, use optical attenuators.) Check the configuration, such

[Contact Us](#)

Checking Optical Module Information of the Interface

Run the display interface interface-type interface-number transceiver [verbose] command to check optical module information. display interface 10ge 1/0/1 transceiver verbose

[Contact Us](#)



Huawei Technical Support

Discover how to view the serial number of an optical module with step-by-step guidance from Huawei Technical Support.

[Contact Us](#)

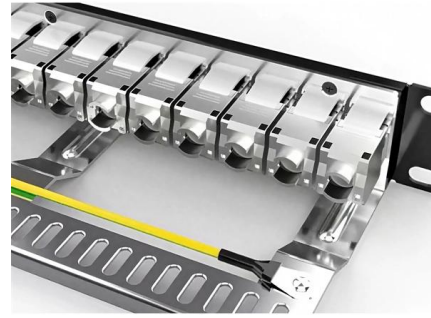




ES5D00X4SA00 (4-Port GE SFP/10GE SFP+ Front Optical Interface)

Card Overview The ES5D00X4SA00 provides four 10GE SFP+ optical ports for data access and line-rate switching. It can be installed in a card slot of the switch models listed in Table 9-38.

[Contact Us](#)



Optical Module Troubleshooting

Optical Modules on the Local and Remote Devices Cannot Communicate Fault Description
A switch is connected to a remote device through optical interfaces and optical fibers. The two optical ports are

[Contact Us](#)

port is disconnected due to optical module faulty

Use the idle optical module on the storage device to exchange with PO and check whether the fault is rectified. If the fault persists, it indicates that the optical module is not faulty. If

[Contact Us](#)



Contact Us

For datasheets, pricing, or custom fiber access solutions, please visit:
<https://frindel.es>