

Huawei Industrial-Grade Switch PoE



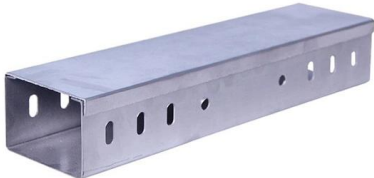


Overview

Huawei CloudEngine S5735I-S-V2 series industrial switches (DIN rail-mounted) are next-generation industrial switches that provide flexible all-gigabit access and GE/10GE uplinks. They stand out with an industrial-grade operating temperature range to withstand harsh outdoor cabinet. With advanced features, high reliability, and flexible deployment capabilities, this switch is ideal for environments such.



Huawei Industrial-Grade Switch PoE



Huawei CloudEngine S5731I-L Series Industry Switches

Brochure Huawei CloudEngine S5731I-L Series Industry Switches Brochure Huawei CloudEngine S5731I-L series industry switches provide all-GE downlink ports and

[Contact Us](#)

Campus Switches , Huawei Enterprise

Huawei campus switches offer high-performance, secure, and reliable switching for enterprises, governments, finance and manufacturing networks. Learn more.

[Contact Us](#)



CloudEngine S5736-S Series Switches , Huawei Enterprise

CloudEngine S5736-S Series are switches designed for the Wi-Fi 6 era, featuring 24 downlink ports, four 10 GE uplink ports and one extended slot. Learn more.

[Contact Us](#)



Huawei CloudEngine S5731I-L Series Industry Switches Brochure

Plug-and-play, auto-sensing ports, automatic identification of industrial protocols, configuration-free VLAN and ring network, and normal power supply after devices are connected to the power grid.



CloudEngine S5731I-L Series Industrial Switches (DIN)

The CloudEngine S5731I-L series supports an industrial-grade operating temperature range and can work in the cabinet in harsh outdoor environment.

[Contact Us](#)



CloudEngine S5735I-H-V2 Series Industrial Switches

Huawei CloudEngine S5735I-H-V2 series industrial switches (DIN rail-mounted) are next-generation industrial switches that provide flexible all-gigabit access and

[Contact Us](#)



Huawei PoE Switches , 90W Hi-PoE & Multi-GE

Explore Huawei PoE, PoE+, PoE++ and 90 W Hi-PoE switches--multigig speed,

[Contact Us](#)





In Stock Huawei Industrial Switch Layer 2 Switch, SNMP Management

Discover Huawei industrial switches with POE, VLAN support, and CE certification for reliable, high-performance network solutions in demanding environments.

[Contact Us](#)



Ethernet Switches

Ethernet Switches After more than 20 years of unremitting efforts and stable development, Huawei provides extensive experience in Ethernet switches. With

[Contact Us](#)

How Rugged Is Huawei Industrial Ethernet Switch? Will It Outlast Your

That's where Huawei Industrial Ethernet Switch dominates--forged not for climate-controlled server rooms, but for infernos of steel mills, vibrating oil rigs, and freezing wind farms. Forget consumer

[Contact Us](#)



Smart network switch

Description Huawei CloudEngine S5735I-H-V2 series industrial switches (DIN rail-mounted) are next-generation industrial switches that provide flexible all-gigabit

[Contact Us](#)





Network Switches , Huawei Enterprise

Huawei campus switches are ideal for building future-proof campus networks with simplified management, high reliability, and service intelligence, across industries

[Contact Us](#)



Smart network switch

Find out all of the information about the Huawei Technologies Co., Ltd product: smart network switch CloudEngine S5735I series. Contact a supplier or the parent

[Contact Us](#)

CloudEngine S5735I-S-V2 Series Switches , Huawei

Huawei CloudEngine S5735I-S-V2 series industrial switches (DIN rail-mounted) are next-generation industrial switches that provide flexible all-gigabit access and

[Contact Us](#)



Data Center Switches

Data Center Switches CloudEngine Data Center Switches -- Ethernet switches widely used in diverse applications and in different network sizes, in both data

[Contact Us](#)



How Mission-Critical Are Huawei Industrial Grade Switches? Do They

Huawei industrial grade switches aren't components--they're continuity insurance for profit-critical operations. While competitors bolt plastic guts into metal boxes, Huawei bakes resilience into every

[Contact Us](#)



Managed PoE/PoE+ Switches

Discover EtherWAN's versatile PoE/PoE+ switches that effortlessly connect with various PoE/PoE+ Powered Devices (PD), such as outdoor cameras and wireless access points. Designed for harsh

[Contact Us](#)

S5320 Gigabit Ethernet Switches -- Huawei products

S5320 Gigabit Ethernet Switches The S5320 series gigabit Ethernet switches are energy-saving switches developed by Huawei to meet the demand for high

[Contact Us](#)



Huawei Ethernet Switches

Router-switch offers huawei CloudEngine, Campus and smb ethernet switches, provide high-availability, high-performance networking for large-scale data centers, ISPs, and enterprise IT networks.

[Contact Us](#)



Huawei poe switch 8 port

About huawei poe switch 8 port Types of Huawei POE Switches (8-Port) A Huawei 8-port POE switch is a compact, high-efficiency networking device designed to deliver both data connectivity and electrical

[Contact Us](#)



Huawei Industrial Switch 2026: AI & 5G-Enabled Networks

Snapshot: A specialized industrial-grade Ethernet switch series designed for harsh environments (e.g., factories, outdoor cabinets) and integrated with Huawei's AI-powered

[Contact Us](#)



CloudEngine S5731I-L , Huawei Industrial Switches

The Huawei Enterprise CloudEngine S5731I-L series DIN Rail Mounted industrial next-generation switch represents a cutting-edge line of industrial Ethernet

[Contact Us](#)



CloudEngine S5735I-H-V2 Series Industrial Switches

Huawei CloudEngine S5735I-H-V2 series industrial switches (rack-mounted) are next-generation industrial switches that provide flexible all-gigabit access and

[Contact Us](#)





S5735-I8p4x-ia1: A Comprehensive Guide To Huawei's Industrial

The S5735-L8P4X-IA1 supports PoE+, enabling it to deliver both data and power over a single Ethernet cable. This feature is particularly useful for powering devices such as IP cameras, wireless access

[Contact Us](#)



Campus Switches

Campus Switches Huawei S Series Switches fully accommodate metro core, aggregation, edge aggregation, and access networking requirements, and are

[Contact Us](#)

Huawei CloudEngine S5735I-S-V2 Series Industry Switches Datasheet

Huawei CloudEngine S5735I-S-V2 series industry switches (S5735I-S-V2 for short) are next-generation standard Layer 3 gigabit switches that provide flexible all-gigabit access and GE/10GE uplink ports.

[Contact Us](#)



S5700 Series Switches Product Description (V200)

Product Characteristics Huawei S5700 series Ethernet switches are next-generation energy-saving GE switches designed to provide high-bandwidth access and Ethernet multi-service aggregation.

[Contact Us](#)



Huawei PoE Switches , 90W Hi-PoE & Multi-GE Campus Series

Explore Huawei PoE, PoE+, PoE++ and 90 W Hi-PoE switches--multigig speed, iStack scalability, AI O& M. Fast shipping and expert sizing at Network-switch .

[Contact Us](#)



Switches

Switches After more than 20 years of unremitting efforts and stable development, Huawei provides extensive experience in Ethernet switches. With multiple

[Contact Us](#)

Contact Us

For datasheets, pricing, or custom fiber access solutions, please visit:
<https://frindel.es>