

# Huawei Core Layer Switch Selection





## Huawei Core Layer Switch Selection

---



### Switches

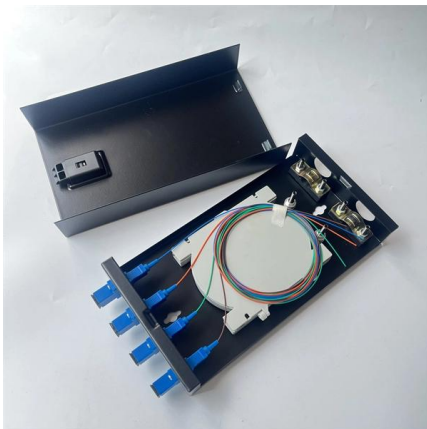
With multiple industry-leading intellectual properties and patents, Huawei provides more than a hundred switch models in more than 10 series, including access,

[Contact Us](#)

### Data Center Switches

Data Center Switches CloudEngine Data Center Switches -- Ethernet switches widely used in diverse applications and in different network sizes, in both data

[Contact Us](#)



### Configuring the Core Switch

Configuring the Core Switch Context In this scenario, IP addresses of the interfaces connecting the core switch to the BRASs and firewalls and OSPF need to be configured on the core

[Contact Us](#)

### Huawei Fixed Switches Overview

Like Cisco switch, Huawei switch is a big family that contains two product lines with different functionality: switches for campus corporate networks

[Contact Us](#)



### **CloudEngine S12700E Series Switches , Huawei**

CloudEngine S12700E Series Switches  
CloudEngine S12700E enables wired and wireless convergence, full-stack openness, and smooth upgrades at the core

[Contact Us](#)



### **Huawei Core Switch: Network's Beating Heart? Can Centralized**

Every enterprise network has a silent dictator--the Huawei core switch. Buried in server rooms or data centers, this unassuming device governs traffic flow between departments,

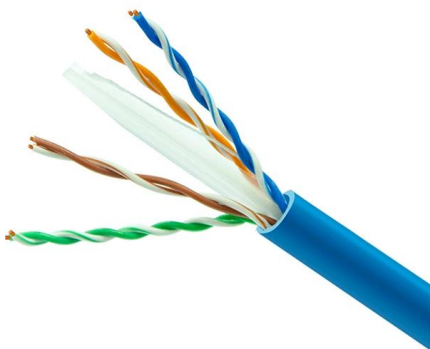
[Contact Us](#)



### **Network Switches , Huawei Enterprise**

Huawei switches already help customers achieve success in industries such as finance, Internet, retail, education, manufacturing, and public services. And with

[Contact Us](#)





## Typical VLAN Configuration

Access switches are layer 2 switches, and aggregation and core switches are Layer 3 switches. The user and server need to communicate with each other due to service requirements.

[Contact Us](#)



## CloudEngine Series Data Center Switches

Huawei CloudEngine series switches are high-performance cloud switches designed for next-generation data centers and high-end campus networks. The series

[Contact Us](#)

## Configuring the Core Switch

In this scenario, IP addresses of the interfaces connecting the core switch to the BRASs and firewalls and OSPF need to be configured on the core switch, so as to implement connectivity

[Contact Us](#)



## 9 Essential Huawei Switch Commands Every Network

Picture this: it's 3 AM, the office is dark, and an urgent alert signals a critical network slowdown affecting the entire finance department. Your console session connects

[Contact Us](#)



## Standalone AC Solution: Core Switches Function as the Gateway for

In this example, core switches set up a CSS that functions as the gateway for wired and wireless users on the entire network and is responsible for routing and forwarding of user services.

[Contact Us](#)



## Switches in a Data Center

Switches in a Data Center Switch selection is generally considered first during data center design. To meet the needs of different customers, Huawei produces data center switches that

[Contact Us](#)



## General Solution Selection Guidance

As the network is a newly deployed midsize network, select the solution of Native AC Solution: Core Switches Function as the Gateway for Wired and Wireless Users.

[Contact Us](#)



## CloudEngine 12800 Series Data Center Core Switches

Product Overview The CloudEngine 12800 (CE12800) series switches are next-generation, high-performance core switches designed for data center networks and high-end campus networks. Using

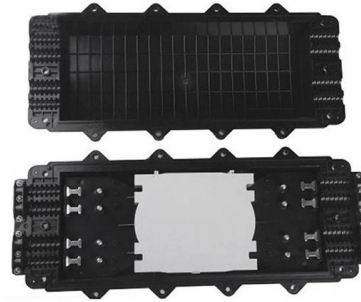
[Contact Us](#)



## Ethernet Switches

Ethernet Switches After more than 20 years of unremitting efforts and stable development, Huawei provides extensive experience in Ethernet switches. With

[Contact Us](#)



### Example for Configuring a Layer 3 Switch to Work with a Router for

Example for Configuring a Layer 3 Switch to Work with a Router for Internet Access Layer 3 Switch Layer 3 switches provide the routing function, which indicates a network-layer function in the OSI

[Contact Us](#)

## Huawei Enterprise Support Community

We're sorry but web site doesn't work properly without JavaScript enabled. Please enable it to continue. Loading

[Contact Us](#)



### Native AC Solution: Core Switches Function as the Gateway for Wired

In this example, a CSS of core switches functions as the gateway for wired and wireless users on the entire network and is responsible for routing and forwarding of user services on the entire network.

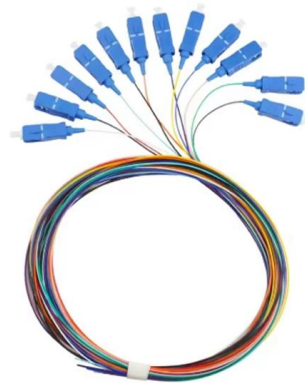
[Contact Us](#)



## Layer 3 Switching

**Layer 3 Switching Background of Layer 3 Switches** In early stage of network deployment, most local area networks (LANs) were established using Layer 2 switches, and routers completed

[Contact Us](#)



## Switches

**Switches** After more than 20 years of unremitting efforts and stable development, Huawei provides extensive experience in Ethernet switches. With multiple

[Contact Us](#)

## Layer 3 Switching

The following is the detailed Layer 3 switching process. As shown in Figure 2-7, the source and destination hosts connect to the same Layer 3 switch but belong to different VLANs (network

[Contact Us](#)



## Link Aggregation Configuration

The preceding information shows that the LACP system priority of Switch A is 100 and is higher than the LACP system priority of Switch B. GigabitEthernet0/0 /1 and GigabitEthernet0/0 /2 are active

[Contact Us](#)



## CloudEngine S16700 Series Switches

CloudEngine S16700 series switches are flagship core switches with record-high performance designed for high-quality 10 Gbps campus networks. This series

[Contact Us](#)



## Huawei Ethernet Switch & Network Switches Solutions

Thunder link offers various models of Huawei Ethernet switches and network switches, including the S5720, S6720, S6730, CE6800 and CE12800, designed

[Contact Us](#)

## Switching an Interface to Layer 3 Mode

Switch an interface to Layer 3 mode on Huawei devices with this technical guide for seamless network configuration and management.

[Contact Us](#)



## Huawei Enterprise Switches Guide 2025: Selection, Deployment, and

This guide provides IT administrators, network engineers, and enterprise procurement teams with insights on selecting, deploying, and managing Huawei enterprise switches.

[Contact Us](#)



## Huawei NetTech TV

4. Configuring Redirection for Policy Routing on S Series Switches  
5. Configuring Floating Static Routes on S Series Switches  
6. Configuring IP Multicast on S Series Switches  
7. Configuring VRRP on S

[Contact Us](#)



## Contact Us

---

For datasheets, pricing, or custom fiber access solutions, please visit:  
<https://frindel.es>