

Huawei Core Board Switch Cable Management Rack





Huawei Core Board Switch Cable Management Rack



How to Master Huawei Switch Stacking: Best Practices and

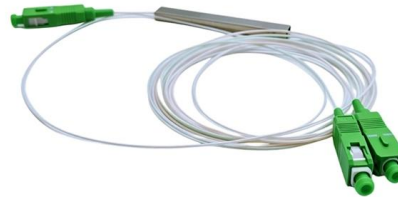
Switch stacking is a cornerstone of modern network design, enabling simplified management, improved redundancy, and scalable bandwidth. Huawei's stacking technology (e.g.,

[Contact Us](#)

Advice on Server Rack Cable Management , by Aria Zhu

Improved scalability: rack cable management simplifies moves, adds, and changes, making it easier to integrate additional racks and components for

[Contact Us](#)



Rackmount Server Cable Management Solutions , RackSolutions

RackSolutions offers a wide range of cable management solutions that can help you clean up your rack while improving airflow and ease of maintenance. Order Now!

[Contact Us](#)

TOR

This design shortens the cables used, simplifies cable management and network structure, and helps drive the development of environmentally friendly and energy-saving data centers.

[Contact Us](#)



10 Ports PoE Switch 12~48V DC
Booster Function



Installing Chassis Header and Cable Management Frames

This figure shows the installation of cable management frames on a CE12808 chassis. Identify the left and right cable management frames of the CE12804/CE12808/CE12812/CE12816 switches

Console Cable

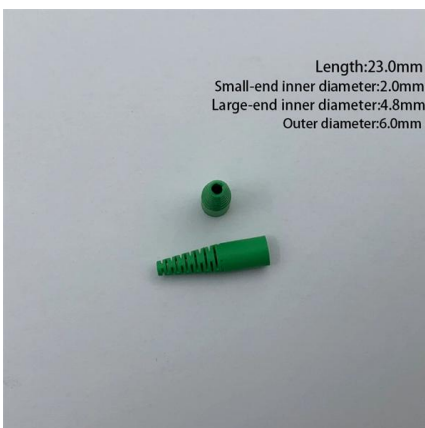
Console Cable Appearance and Structure Figure 9-1 and Figure 9-2 show the appearance and structure of a console cable.

[Contact Us](#)

[Contact Us](#)



Length:23.0mm
Small-end inner diameter:2.0mm
Large-end inner diameter:4.8mm
Outer diameter:6.0mm



How to Master Huawei Switch Stacking: Best Practices and

Mastering Huawei switch stacking requires meticulous planning, adherence to best practices, and proactive troubleshooting. By leveraging ring topologies, uniform firmware, and

[Contact Us](#)

Installing Cable Management Frames



The procedures and methods for installing cable management frames of all the CloudEngine 16800 models are the same. The following figure shows the installation of cable

[Contact Us](#)



8.4 Installing Rack Controller Cables

Remove the decorative cover and maintenance compartment cover from the rack controller. Figure 8-8 Removing covers Check whether the short-circuiting copper bars are installed. For details, see 7.4.3

[Contact Us](#)



Server Rack Cable Management ? -- Sysracks

Optimize your network with server rack cable management solutions. ? High quality and warranty. Fast shipping within the USA. Shop now!

[Contact Us](#)



Connecting Servers to Leaf Switches

The management interfaces do not require large bandwidths. Generally, the access switches with low prices are used as long as they meet the interface access requirements, for example, Huawei S5700

[Contact Us](#)



All Products and Solutions



Directory of Huawei enterprise IT infrastructure products, solutions, and services.

[Contact Us](#)



Checking the Cabinet or Rack

Check whether the cross-sectional area meets the requirements for routing network cables and optical fibers. Table 1-3 list the requirements for routing optical fibers in a cabinet/rack when boards are fully

[Contact Us](#)



Building Networks Cable Management Solutions , Legrand

Legrand's Building Network Cable Management Solutions Legrand has had a strong focus on providing the ultimate in cable management solutions, serving to protect

[Contact Us](#)



Got a rack, now cable management? : r/homelab

What if you want to split up your rack or reconfigure something, a short DAC cable

[Contact Us](#)





Installing Stack Cables and Powering On the Switch

Power off the switch before connecting stack cables. Physical member ports of logical stack port (stack-port n/1) on one switch must be connected to physical member ports of logical stack port (stack-port

[Contact Us](#)



Space-Saving Cable Management Rack Systems

Space Optimized, High Capacity Cable Management Systems Panduit builds on years of experience as a leader in cable management, integrating best practices, and application knowledge to develop

[Contact Us](#)

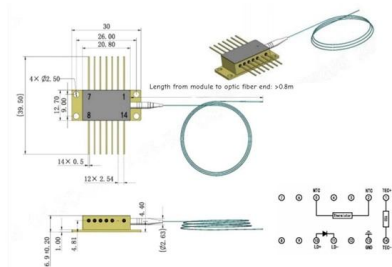
Replacing a Smart Rack Controller

Before deleting the faulty rack controller, you are advised to record the running parameters (choose Monitoring > ESS > ESU > ESR > Running Param.). To delete invalid modules for the new rack

[Contact Us](#)



Outline drawings
mm



Installing the Smart Rack Controller

Procedure If you do not install the rack controller cables immediately, you are advised to install the short-circuiting copper bars on the rack controller by referring to steps 1 to 3. If you install the rack

[Contact Us](#)



Huawei 19 Inch Rack Guide: How to Choose the Right One

A practical, no-fluff guide to selecting a Huawei 19 inch rack--covering dimensions, certifications, compatibility, and real-world trade-offs for telecom, data center, and edge deployments.

[Contact Us](#)



Installing Cable Troughs and Cable Racks

FusionModule2000S Smart Modular Data Center User Manual C:21013368,21013368-001;M:FusionModule2000S;V:V100R021C10 Installing Cable Troughs and Cable Racks

[Contact Us](#)



Horizontal Rack Cable Management: Cable

The following tips will teach you how to create a good horizontal rack cable management strategy that will not only help keep things neat and organized.

[Contact Us](#)



Installing Chassis Header and Cable Management Frames

Confirm the number of cable management frames before the installation. The CE12804, CE12808, CE12812, CE12816, CE12804S, and CE12808S switches use four, six, eight, ten, ten, two, and four

[Contact Us](#)



Rack Mount Cable Management

The server rack serves as the essential core element of the entire rack mount cable management, housing all critical equipment. As such, it is imperative to

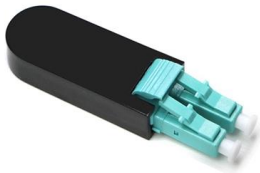
[Contact Us](#)



iStack Overview

iStack Overview Intelligent Stack (iStack) allows multiple stacking-capable switches to function as a single logical switch. Before a stack is set up, each switch is an independent entity and

[Contact Us](#)



iStack Overview

Explore Huawei's iStack technology, enabling multiple switches to operate as one logical switch for enhanced network performance and management.

[Contact Us](#)



Installing Cable Management Frames

The procedures and methods for installing cable management frames of all the CE12800E chassis models are the same. This figure shows the installation of cable management frames on a

[Contact Us](#)





Cable Management

Cabinets, Thermal Management, Racks and Enclosures Our vast selection of cabinets, thermal management, racks, enclosures for data centers,

[Contact Us](#)



Contact Us

For datasheets, pricing, or custom fiber access solutions, please visit:
<https://frindel.es>