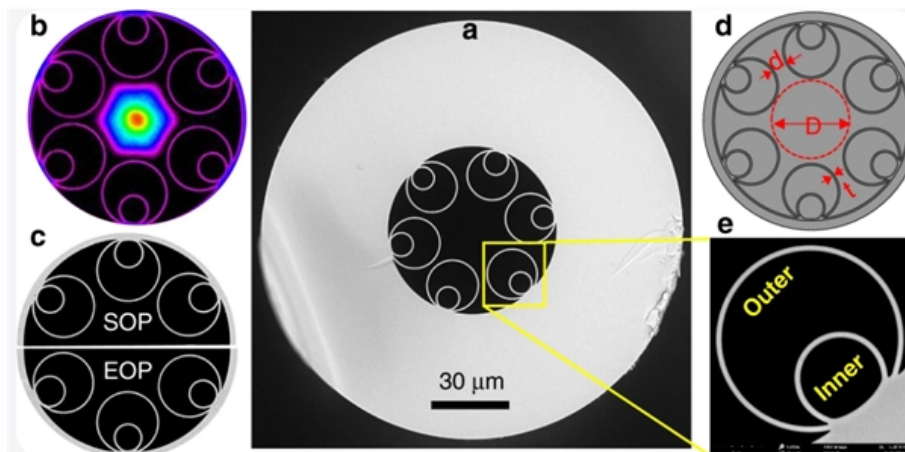


# Huawei All-Optical Switch IP





## Overview

---

Based on Huawei's Versatile Routing Platform (VRP), CloudEngine S5736-S supports enhanced Layer 3 features, simplified Operations and Maintenance (O&M), flexible Ethernet networking, and mature Internet Protocol version 6 (IPv6) features. CloudEngine S5736-S Series Switches are next generation standard all-optical GE switches, with 48 downlink optical ports and four 10 GE uplink ports. The Huawei S5735-L48P4X-A stands as a premier solution for modern enterprise access, offering a high-density gigabit foundation for digital transformation. Within the fast-paced world of industrial networking, the S5735-L48P4X-A Huawei switch provides a "simplified" yet powerful architecture.



## Huawei All-Optical Switch IP

---



### CloudEngine S5736-S Series Switches , Huawei Enterprise

CloudEngine S5736-S series switches are all-optical switches that feature 48 downlink optical ports and four uplink 10 GE ports. Learn more.

[Contact Us](#)



### CloudEngine S5735-L-V2 Series All-Optical Switches Brochure

Huawei CloudEngine S5735-L-V2 series are simplified gigabit Ethernet switches that provide 24/48 x GE downlink ports, 4 x GE or 10GE uplink ports and 2 x 12GE dedicated stack ports.

[Contact Us](#)

### Empowering Enterprise Connectivity: An In-Depth Look at the Huawei

Discover the details of Empowering Enterprise Connectivity: An In-Depth Look at the Huawei S5735-L48P4X-A Switch at LonRise Equipment Co. Ltd., a leading supplier in China for Optical

[Contact Us](#)



### What Is a Switch? What Is It Used for?

When receiving a TCP/IP packet, the switch checks whether the packet is a broadcast packet. If so, the switch broadcasts the packet out of all ports. Otherwise, the switch checks its MAC

[Contact Us](#)



### Optical Terminal

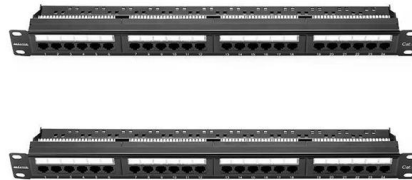
The OptiXstar product series extends optical connectivity to every home, enterprise, and campus, bringing families closer and making enterprise operations far more

[Contact Us](#)

### How to Master Huawei Switch Stacking: Best Practices and

Switch stacking is a cornerstone of modern network design, enabling simplified management, improved redundancy, and scalable bandwidth. Huawei's stacking technology (e.g.,

[Contact Us](#)



### Optical Access

Optical Access -- Huawei OptiXaccess Passive all-optical network access solutions for enterprises, Internet Service Providers (ISPs), and Multiple System Operators

[Contact Us](#)



## How To Read Optical Module Information On Huawei Switches

The following uses the Moduletek SFP-10G-LR module connected to a Huawei S6700 switch as an example to introduce how to read information of the connected optical module on a Huawei switch.

[Contact Us](#)



## CloudEngine S5736-S Series All-Optical Switches

In addition to traditional Spanning Tree Protocol (STP), Rapid Spanning Tree Protocol (RSTP), and Multiple Spanning Tree Protocol (MSTP), the CloudEngine S5736-S supports Huawei-developed

[Contact Us](#)

## CloudEngine S5735-S-V2 Series All-Optical Switches

CloudEngine S5735-S-V2 Series All-Optical Switches Huawei CloudEngine S5735-S-V2 series all-optical switches build on a next-generation high-performance

[Contact Us](#)



## CloudEngine S5736-S Series Switches , Huawei Enterprise

Based on Huawei's Versatile Routing Platform (VRP), CloudEngine S5736-S supports enhanced Layer 3 features, simplified Operations and Maintenance (O& M), flexible Ethernet networking, and mature

[Contact Us](#)



## Optical Module Solutions for Huawei S5700/S5720 Series Switches

When using switches, we may encounter many confusions, such as what types of optical modules are needed for different models of Huawei switches, and how to resolve issues encountered

[Contact Us](#)



## Huawei CloudEngine S5535-S-V2 Series Hybrid Optical-Electrical Switches

Huawei CloudEngine S5535-S-V2 Series Hybrid Optical-Electrical Switches Brochure Huawei CloudEngine S5535-S-V2 series hybrid optical-electrical switches are standard gigabit Ethernet

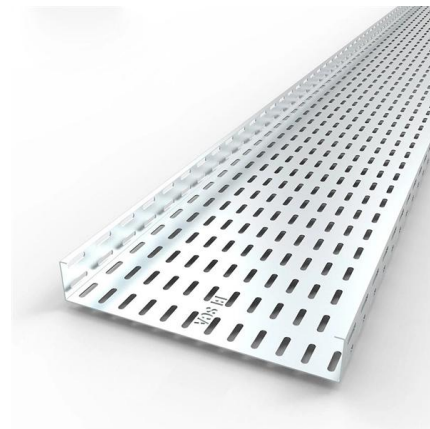
[Contact Us](#)



## Cisco C9200L-STACK-KIT= Switch Stacking Module

High-performance stacking kit for Cisco Catalyst 9200L switches. 80Gbps bandwidth, supports 8-unit stacks, simplifies management with single IP control.

[Contact Us](#)



## CloudEngine S5735-S-V2 Series All-Optical Switches

Huawei CloudEngine S5735-S-V2 series all-optical switches build on a next-generation high-performance hardware platform and a unified software platform

[Contact Us](#)



### CloudEngine S5735-L-V2 Series All-Optical Switches

CloudEngine S5735-L-V2 Series All-Optical Switches Huawei CloudEngine S5735-L-V2 series all-optical switches build on a next-generation high-performance

[Contact Us](#)



### Intelligent OptiX Network , OptiX , All-Optical Networking

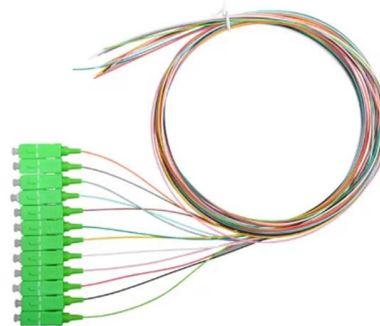
Huawei's intelligent OptiX network strategy aims to build intelligent, simplified, ultra-broadband, and ubiquitous next generation all-optical networks.

[Contact Us](#)

### IP + Optical Networks

An IP + optical solution could take advantage of the aggregation capabilities within access networks and utilise an optical transport network (OTN) switching capability to efficiently match varied client-side

[Contact Us](#)



### What Is an All-Optical Ethernet Switch?

All-optical Ethernet switches are a type of switch that provides optical uplink and downlink ports, making them an ideal choice for building an all-optical campus network. They can function as

[Contact Us](#)



## Network Switches , Huawei Enterprise

Huawei Ethernet Switches Turbocharge your enterprise network with high-performance, high-availability for resilient services and simplified management.

[Contact Us](#)



## Huawei CloudEngine S5735-S-V2 Series All-Optical Switches Brochure

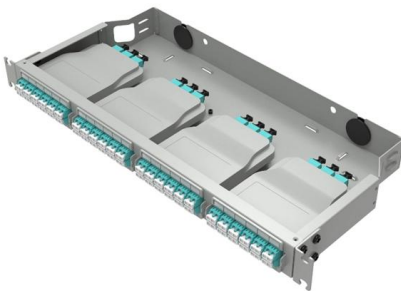
CloudEngine S5735-S-V2 switches support simplified operations and maintenance (O& M), and flexible Ethernet networking. It also provides enhanced Layer 3 features and mature IPv6 features.

[Contact Us](#)

## All-Optical Ethernet Switch

An all-optical Ethernet switch provides both optical uplink and downlink ports, and uses optical fibers that feature high transmission speed, large bandwidth, and strong anti-interference capability.

[Contact Us](#)



## New Iraqi National IP and Optical Network

S5735-L48T4X-A Gigabit Ethernet Switch for Campus Networks Cisco Catalyst 9400 Series: Complete Guide to Features, Migration Strategy, and 4500/4500E Compatibility S5735-L48T4S-A1 Huawei

[Contact Us](#)



### **S3700-28TP-EI-AC**

S3700& S5700& S6700 Series S3700-28TP-EI-AC:  
Access product manuals, HedEx documents,  
product images and visio stencils.

[Contact Us](#)



### **Huawei S3700, S5700 and S6700 Switches Support Guide, Manuals**

S3700& S5700& S6700 Series: Access product  
manuals, HedEx documents, product images and  
visio stencils.

[Contact Us](#)

### **Software & Firmware Download of Enterprise Products**

Directory of software & firmware for Huawei  
products of Enterprise Networking, IT, Unified  
Communications and Collaboration, Network  
Management System, Enterprise Wireless,  
Network

[Contact Us](#)



### **Huawei's Data Center All-Optical Switch Wins the Special Prize at**

At Interop Tokyo 2025, the largest ICT exhibition  
in Japan, Huawei's DC-OXC Photon-Electronics  
Integration DCN in the AI Era (Data center all-  
optical switch - Huawei OptiXtrans DC808)

[Contact Us](#)



## What Is an All-Optical Ethernet Switch?

An all-optical Ethernet switch provides both optical uplink and downlink ports, and uses optical fibers that feature high transmission speed, large bandwidth, and strong anti-interference

[Contact Us](#)



## Striding Towards the Intelligent World White Paper

All-optical cross- connect OXC provides more innovative and flexible all-optical switching and grooming. Compared with traditional ROADM optical switching based on discrete boards and inter- board fiber

[Contact Us](#)

## Contact Us

---

For datasheets, pricing, or custom fiber access solutions, please visit:  
<https://frindel.es>