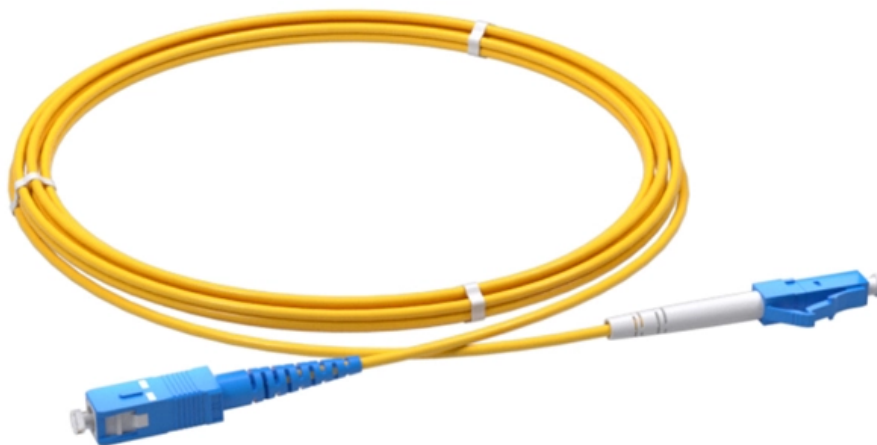


Huawei 10 Fiber-to-Electrode Module



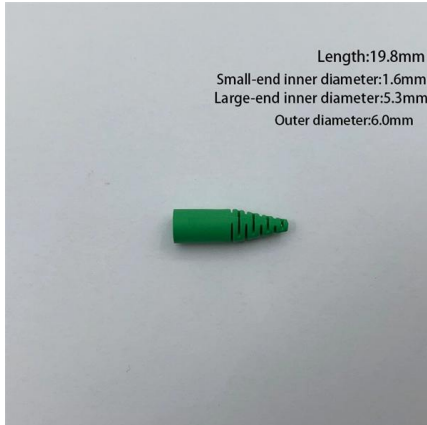


Overview

The Huawei Optical Transceiver SFP-10G-LR is a versatile and high-performance 10G SFP+ module. Designed for single-mode fiber, it offers reliable 10km transmission at 1310nm. If the SFP-10G-ER-1310 is connected to a 10Gbase-ER standard optical module (1550nm, 10GE, 40km), the maximum transmission distance is only 20km due to different specifications such as wavelength and receiving sensitivity. This product is highly beneficial for data centers and enterprise networks needing robust and long-range connectivity. This time period includes the transit time for us to receive your return from the shipper (5 to 10 business days), the time it takes us to process your return once we receive it (3 to 5 business days), and the time it takes your bank to process our refund request (5 to 10 business days). Huawei compatible SFP+10GE-LH10-SM1310 (02311MUU) is SFP+ (Small Form factor Pluggable) Transceiver, operating over Double Fiber Single-Mode Fiber (SMF) optical cable. It has minimum guaranteed optical budget of 6 dB, with in most cases is enough to reach about 10 km distance.



Huawei 10 Fiber-to-Electrode Module



SFP+10GE-LH10-SM1310

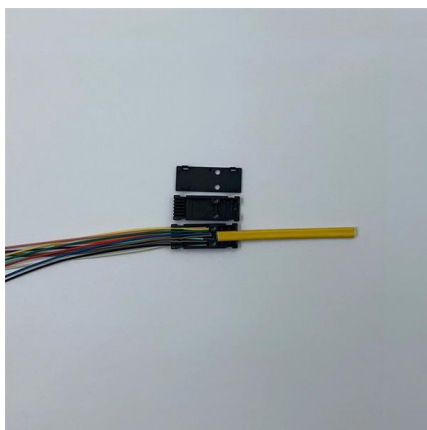
Huawei compatible SFP+10GE-LH10-SM1310 (02311MUU) is SFP+ (Small Form factor Pluggable) Transceiver, operating over Double Fiber Single-Mode Fiber (SMF) optical cable. It has minimum

[Contact Us](#)

Huawei Technical Support

This document provides technical details about 1Gbps eSFP Optical Modules, including specifications and support information.

[Contact Us](#)



10GBase-LR 10G SFP+ 1310nm DOM 10km Dual LC SMF Transceiver, Huawei

GET brand new Force10 10GBase-LR Compatible optical transceiver whit wholesale price at 10Gtek Store, 10G SFP+ (DOM, 1310nm 10km SMF Dual LC) modules online sale.

[Contact Us](#)

10GE SFP+ Optical Modules

10GE SFP+ Optical Modules OMXD30000 (02318169) OSX010000 (02318170) OSX040N01 (02310CNF) OSXD22N00 SFP-10G-ER-1310 SFP-10G-ER-C SFP-10G-ER-SM1270-BIDI SFP-10G

[Contact Us](#)



Huawei SFP-10G-ER-1310 Compatible 10G SFP+ ER Module , FiberMall

Huawei SFP-10G-ER-1310 Compatible SFP+ Module is designed for optical communication applications and supports link lengths up to 40 km over LC duplex SMF fiber.

[Contact Us](#)



Huawei SFP-10G-USR Compatible 10Gbps SFP

Huawei SFP-10G-USR compatible optical transceiver is a dual fiber 10Gbps Small Form-factor Pluggable SFP+ module for use in 10GBASE Ethernet network.

[Contact Us](#)



Huawei SFP-10G-iLR SFP+ 10GBASE-LR Singlemode Transceiver

The SFP-10G-iLR 10GBASE-LR LC Duplex SFP+ compatible with Huawei has a receiving function (receiver with 1310nm) and a transmitting function (transmitter with 1310nm) for the transmission of

[Contact Us](#)





10 Gbit/s SFP+ Optical Modules

10 Gbit/s SFP+ optical modules apply to 10 GE optical ports. The wavelength can be 850 nm, 1310 nm, or 1550 nm, and the transmission distance ranges from 0.5 km (0.31 mi) to 80 km (49.71 mi).

[Contact Us](#)



Huawei SFP-10G-T compatible SFP+ 10G Copper 30m

Description This 10Gbps Copper Small Form Pluggable (SFP+)transceiver is suitable for high performance, cost effective module compliant with the Gigabit Ethernet

[Contact Us](#)

Huawei Optical Modules and Cables

Buy Genuine Huawei Optical Modules and Cables from GenuineModules with best price and fast worldwide shipping.

[Contact Us](#)



Huawei 10GBase-LR SFP+ Compatible Transceiver 10G Module

10Gtek's 10GSFP-BD-10-U/D (pair) is a pair of 10Gbps SFP+ BiDi transceivers supporting up to 10 km over single LC SMF fiber, following IEEE 802.3ae and SFP+ MSA 10GBase-LR.

[Contact Us](#)



Original HUAWEI 10G-1310nm-10km-SM-SFP+

High quality Original HUAWEI 10G-1310nm-10km-SM-SFP+ from China, China's leading product market Huawei Optical Transceiver product, with strict quality

[Contact Us](#)



SFP-10G-BXU1

Huawei Compatible SFP+ Transceiver Module QuickSpecs Technical Specifications 10GBASE-BXU Small Form-factor Pluggable Plus (SFP+). Standards based 10

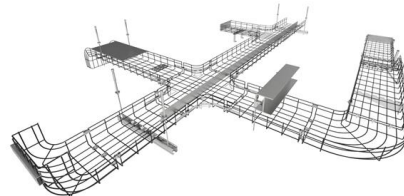
[Contact Us](#)



SFP-10G-LR, Huawei SFP+ Optical Transceiver, 10G,

The Huawei Optical Transceiver SFP-10G-LR is a versatile and high-performance

[Contact Us](#)



SFP-10G-ER-1310 Original HUAWEI 10G 1550nm 40km

Buy Huawei SFP-10G-ER-1310 Original 10G SFP+ Module with Compatible Test Report Assured, 3-Level Quality Control, at 8-Year Gold Supplier Thunder-link

[Contact Us](#)





Huawei Optical Transceiver eSFP GE Single-Mode Module

The Huawei eSFP GE Single-Mode Module 1310 nm 10 km LC delivers reliable 1 Gbps fiber connectivity for long-distance networks. Designed for enterprise switches and routers, it supports Digital

[Contact Us](#)



10G SFP+ Module

Huawei SFP-10G-ER-C 02312UUH 1550nm 10GE 40km LC Transceiver Module 10G SFP+ Module SKU: 02312UUH Rated 5.00 out of 5

[Contact Us](#)

10GE SFP+ Optical Modules

Single-fiber bidirectional (BIDI) optical modules must be used in pairs. For example, SFP-10G-BXU1 must be used with SFP-10G-BXD1.

[Contact Us](#)



HUAWEI 10G 1550nm 80km SM SFP module

HUAWEI 10G 1550nm 80km SM SFP module OPTCORE 10GBASE-ZR SFP+ module is designed for use with ZTE 10G equipment and is equivalent to part number SFP-10G-ZR. It supports data-rate of

[Contact Us](#)



Huawei SFP-10G-LR Compatible 10GBASE-LR SFP

Huawei SFP-10G-LR Compatible 10GBASE-LR SFP+ Transceiver module data sheet (SMF, 1310nm, 10km, LC connector) from fiberopticdistribution

[Contact Us](#)



Huawei SFP-10G-ZR100 10GBASE-ZR SFP

Check Huawei SFP-10G-ZR100 Compatible 10GBASE-ZR SFP+ Transceiver module data sheet(SMF, 1550nm, 100km, LC connector) and price list on

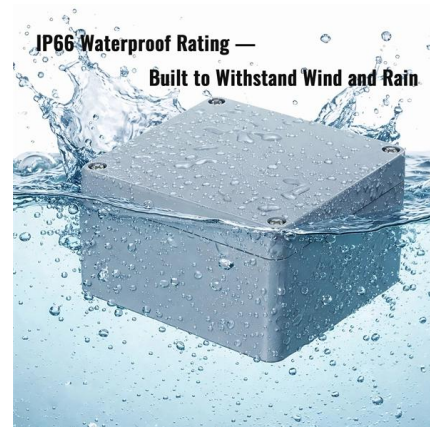
[Contact Us](#)



Huawei SFP-10G-LR Compatible 10Gb SFP

This high-quality Huawei SFP-10G-LR Compatible 10GBASE-LR SFP+ 1310nm 10km DOM Transceiver. A cost-effective solution that provides high bandwidth

[Contact Us](#)



Contact Us

For datasheets, pricing, or custom fiber access solutions, please visit:
<https://frindel.es>