

How to view the MAC addresses of VLANs connected to a switch





Overview

`show mac-address [vlan <VLAN-ID>] [<PORT-LIST>] [<MAC-ADDR>] [TUNNEL-ID]` Lists all MAC addresses on the switch and their corresponding port numbers. You can also choose to list specific addresses and ports, or addresses and ports on a VLAN. (from what I know you can check that by `Switch#sh mac-address-table` command) I mean say you are on switch1 what command do you use to check switch1's mac address?

2) Does each switchport interface have a separate mac addresses for each. To find the MAC Address on a Cisco switch port, we use the command `show mac-address-table`. When performing troubleshooting or maintenance tasks on an enterprise network, it is sometimes necessary to identify the MAC address of particular devices (hosts, other switches, other network devices) that are connected to the network.



How to view the MAC addresses of VLANs connected to a switch



CCNA 200-301 v1.1 Study Notes: Exam Map & Core Models

Useful commands: show vlan brief, show interfaces trunk, show spanning-tree, show etherchannel summary, show mac address-table.
CCNA 200-301 v1.1 Study Notes Page 2 3.

[Contact Us](#)

Commands to Find Device Mac Address on Cisco

The mac address or CAM table shows the VLAN associated with the port, MAC being learned on the port (i.e. mac address of the connected device)

[Contact Us](#)



If I know the MAC address of a system on the campus network

If I know the MAC address of a system on the campus network, is there an easy way to locate what switch and interface it's connected to?

[Contact Us](#)

command to show vlan connections on cisco switch

What is the command to show which vlan a user or a device is connecting to on switch? in other words, how to look at the running config of the

[Contact Us](#)



Configure MAC-based VLAN Groups on a Switch through the CLI

This article provides instructions on how to configure MAC-based groups on a switch through the CLI.

[Contact Us](#)



Understanding LAN Security: AAA, Attacks, and Prevention , Course

When there are multiple routers and switches, server-based AAA is more appropriate. 3. Category Examples MAC Table Attacks Includes MAC address flooding attacks. VLAN Attacks

[Contact Us](#)



How to Setup UniFi Network - Complete Guide 2026

Complete guide on how to setup and configure UniFi network. Everything you need to know to get the best performance

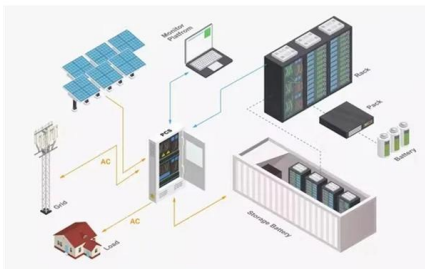
[Contact Us](#)



How to find IP & MAC addresses on Cisco IOS Devices

As a Network Administrator/Engineer you may be asked to find MAC addresses and/or IP Addresses, hopefully this can make your job a little bit

[Contact Us](#)



RouterOS

RouterOS Documentation This webpage contains the official RouterOS user manual. RouterOS is the operating system of MikroTik devices. Documentation applies for the latest stable

[Contact Us](#)

Viewing the port and VLAN MAC addresses

The MAC address assigned to each switch port is used internally by such features as Flow Control and the spanning-tree protocol. Using the walkmib command to determine the MAC address assignments

[Contact Us](#)



Help with command to locate devices by MAC addresses on switches

Enter sh mac address-table address (mac address) Is there a different command sequence that I could use that would help me locate these APs when multiple switches are involved.

[Contact Us](#)



Checking MAC Addresses on a Cisco Switch

You can check the MAC addresses stored by a Cisco switch by logging into the switch and issuing the command `show mac address-table`. The addresses are stored in a table called the

[Contact Us](#)



How to Find My IP Address

Learn how to find your local and external IP address with instructions for devices, including Windows, Linux, Mac, Android, and iOS, for easy

[Contact Us](#)

How to Configure Spanning Tree on Omada Controller

When switching modes or re-enabling RSTP, VLANs are mapped to available instances in ascending order of VLAN ID, until the maximum number of instances is reached. Any remaining

[Contact Us](#)



Viewing the switch's MAC address assignments for VLANs configured

Viewing the port and VLAN MAC addresses The MAC address assigned to each switch port is used internally by such features as Flow Control and the spanning-tree protocol. Using the `walkmib`

[Contact Us](#)



Commands to find mac-address and IP on a port

Solved: Can someone show me the commands to find a mac-address on a switch and if I know the port I am looking to find it on, also how i find the IP address on that port

[Contact Us](#)



How to see mac address of the switch that you are currently on

Yes, each switchport has it's own MAC address, I think this is how the switch itself (ASICs) makes forwarding decisions. Not quite sure tho, there isn't too much info on this I could find on the fly.

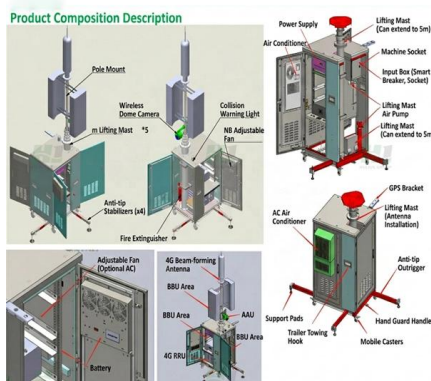
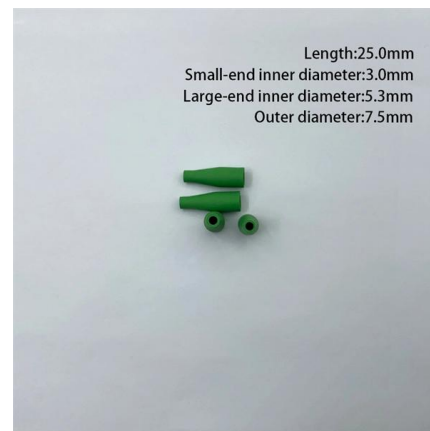
[Contact Us](#)



How to Find a Device MAC Address on a Cisco Switch

In this article, we'll explore how this can be done on Cisco-based networks ranging from a single switch to a larger enterprise network with several switches. On

[Contact Us](#)



Viewing the switch's MAC address assignments for VLANs configured

The Base MAC address is used by the first (default) VLAN in the switch. This is usually the VLAN named "DEFAULT_VLAN" unless the name has been changed (by using the VLAN Names screen.) On the

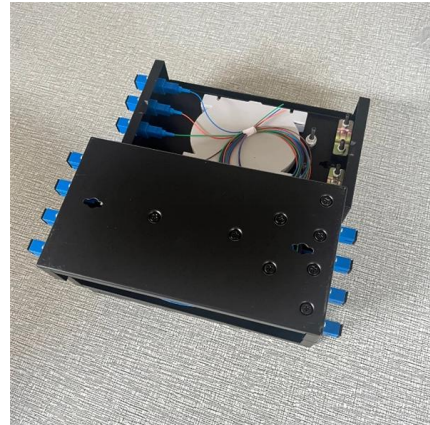
[Contact Us](#)



Viewing the switch's MAC address assignments for VLANs

The Base MAC address is used by the first (default) VLAN in the switch. This is usually the VLAN named "DEFAULT_VLAN" unless the name has been changed (by using the VLAN Names screen). On the

[Contact Us](#)



Catalyst 9300/X/L-M Series Installation Guide

This guide provides instruction on how to install and configure your Catalyst 9300/X/L-M series switches in the Meraki-managed mode.

[Contact Us](#)



How to find a list of devices connected to my network

In other words, when I restart a device and it acquires a new IP address (dynamic) I end up with the old IP address also listed in my ARP table,

[Contact Us](#)



UniFi Switch Settings - Ubiquiti Help Center

UniFi Switch Settings let you configure how your network switches handle traffic, VLANs, port behavior, and Layer 3 isolation. These settings are critical for

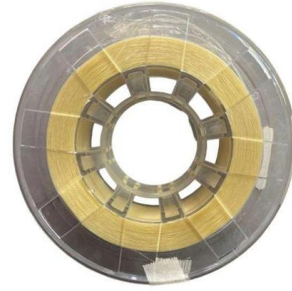
[Contact Us](#)

Solved: mac address table per vlan



Cisco switches support per-vlan mac-address tables. As posted by John you can show all the mac-addresses specific to a vlan and you can also clear all mac-addresses specific to a vlan.

[Contact Us](#)



Switching Basics: VLANs and MAC Address Tables

Meanwhile, MAC address tables enable precise frame forwarding within each VLAN, eliminating bandwidth waste. Moreover, VLAN segmentation

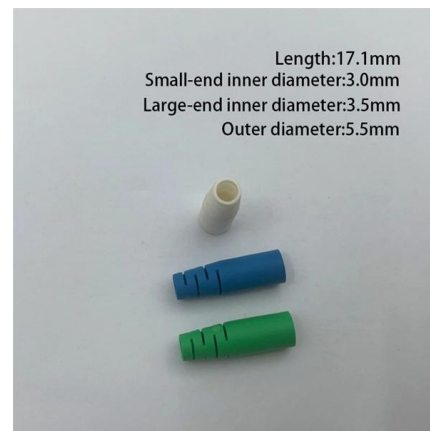
[Contact Us](#)



How to Find Any Device's IP Address, MAC Address,

Every network-connected device -- computers, smartphones, tablets, smart home gadgets, and more -- has an IP address and a unique MAC address

[Contact Us](#)



show mac-address

Lists all MAC addresses on the switch and their corresponding port numbers. You can also choose to list specific addresses and ports, or addresses and ports on a VLAN.

[Contact Us](#)





Contact Us

For datasheets, pricing, or custom fiber access solutions, please visit:
<https://frindel.es>