

How to verify the distribution box





Overview

Verify the specifications of the power distribution box against project requirements. To ensure that the electrical testing & pre-commissioning of the control, distribution, and miscellaneous panel are carried out in a manner that is risk-free, productive, and in accordance with good working practice, as required by the project work specifications. Long cable runs can result in a voltage drop, which can be solved by using a heavy gauge wire. This article series discusses procedures for safe and effective visual inspection of residential electrical systems including electrical panels and other components, when the.



How to verify the distribution box



Distribution Box Guide: Types, Components & Solutions

Understand distribution boxes (DB boxes) in 5 minutes. Learn about types, components, functions, and uses. Find the perfect DB box for your needs.

[Contact Us](#)

Understanding Distribution Boxes: A Comprehensive Guide

A distribution box, also known as a power distribution box or electrical distribution box, is used to distribute electrical power safely to multiple

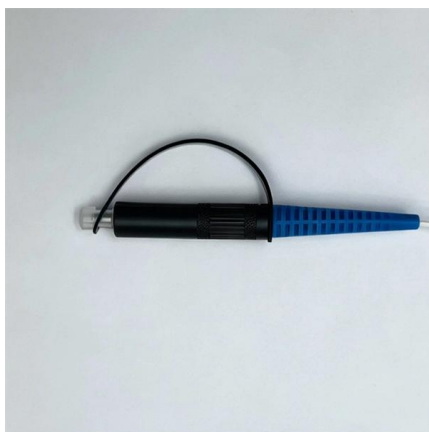
[Contact Us](#)



How to Install a Cable Distribution Box Safely and

Reliable cable distribution boxes ensure safe, efficient power management for residential, commercial, and industrial systems. Learn

[Contact Us](#)



Distribution Panel Board Testing & Commissioning

This post is supposed to provide distribution panel testing and execute commissioning while the inspection checklist is being completed.

[Contact Us](#)



Network Cabinet & Rack



what is a Distribution Box

In electrical systems, a distribution box, also known as a breaker box or distribution board, plays a critical role in managing and distributing electrical

[Contact Us](#)

Distribution Box Certification Guide: What Testing and Documentation

Short-circuit withstand tests verify that the distribution box can safely handle fault conditions. Testing typically involves subjecting the assembly to fault currents ranging from 6kA to

[Contact Us](#)



10-Yr Pro's Guide: 3 Details to Check a Reliable Distribution Box

10-Yr Pro's Guide: 3 Details to Check a Reliable Distribution Box A 10-year master breaks down how to tell if a distribution box is reliable (step by step): Crack-free copper

[Contact Us](#)

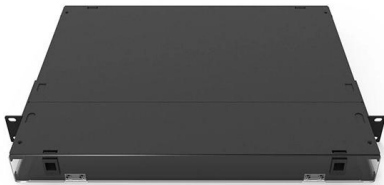




Understanding Distribution Boxes: Your Guide to Power

Weatherproof Distribution Boxes These serve specific outdoor purposes, with rain, dust, and extreme temperatures sealed shut, protecting any

[Contact Us](#)



How to confirm whether the installation location of the

Confirming whether the installation location of the power distribution box is reasonable is the key to ensuring the safe and stable operation of the

[Contact Us](#)

electrical distribution box preventive maintenance check list

Here are some additional steps that could be included in the Testing section of your electrical distribution box preventive maintenance checklist Verify the functionality of surge protection devices Conduct a

[Contact Us](#)



Power Distribution Box

Testing and Commissioning Perform a visual inspection of all connections and components. Test the functionality of the distribution box and circuit breakers. Verify that all indicators and meters are

[Contact Us](#)



Types of Distribution Boxes Explained with Applications & Functions

These Boxes eliminate chances of short circuits by distributing electricity in the right portions and serve as the load centre and distributor of electrical power.

[Contact Us](#)



How to Read and Interpret Your Distribution Box Labels

Understand your distribution box labels to identify circuits, improve safety, and troubleshoot electrical issues in your home with confidence.

[Contact Us](#)



How to Inspect a Residential Electrical Distribution Panel

This article summarizes inspection of the building electrical panel, main panel, or electrical distribution and sub panels.

[Contact Us](#)



A comprehensive understanding of distribution box

Distribution boxes are at the heart of safe and organized electrical systems--whether in residential, commercial, or industrial settings. But how do

[Contact Us](#)





Distribution Box Certification Guide: What Testing and Documentation

Navigating the complex world of distribution box certification¹ can be overwhelming. Without proper certification, your products face market rejection, safety concerns, and potential legal

[Contact Us](#)



What Is a Distribution Box?

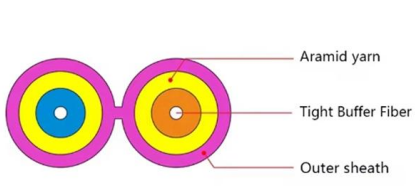
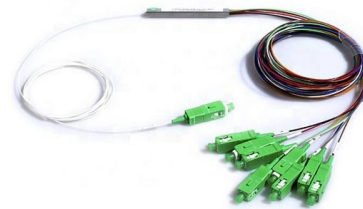
What to Look for When Choosing a Distribution Box If you're going to buy a distribution box, there are several things you should look for. You should

[Contact Us](#)

The Complete Guide to Distribution Box: Installation, Types & More

Quality distribution boxes represent a wise investment that pays dividends through improved safety, reduced maintenance costs, and enhanced system flexibility. As electrical demands

[Contact Us](#)



Power Distribution Boxes Explained Simply

Discover the essentials of a Power Distribution Box--how it works, key types, benefits, and tips to ensure safe, efficient electrical power management.

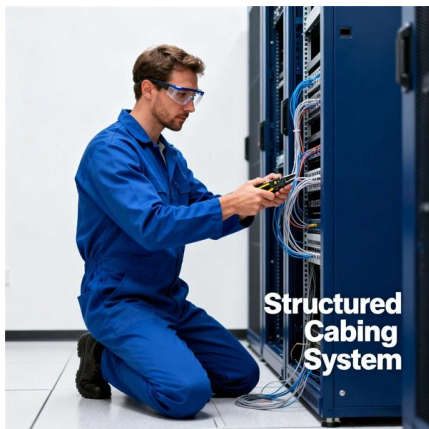
[Contact Us](#)



Step-by-Step Guide: Testing a Septic Tank Distribution Box

The septic distribution box (D-box) sits between the septic tank and the drain field. Its job is to evenly distribute wastewater from the tank into several drain field lines for proper absorption. When the D

[Contact Us](#)



DB Box Inspection Checklist , PDF

The document provides a 16 item checklist for inspecting a main

[Contact Us](#)

Power Distribution Box

Be sure that the power distribution box has sufficient power provided to it. Long cable runs can result in a voltage drop, which can be solved by using a heavy gauge wire. Check wires/DIN terminal clasps

[Contact Us](#)



What is a Distribution Box? - A Comprehensive Guide

A distribution box organizes and controls power flow, ensuring safety and efficiency in electrical systems.

[Contact Us](#)



How to Install a Distribution Box--A Comprehensive

Whether you are an electrical contractor or a construction brigade, knowing how to properly and safely install distribution boxes is the basis of

[Contact Us](#)



How to Read and Interpret Your Distribution Box Labels

You might feel a little nervous about opening your distribution box, but you can do it safely if you follow some simple steps. Let's walk through what you need to know before you start.

[Contact Us](#)

Contact Us

For datasheets, pricing, or custom fiber access solutions, please visit:
<https://frindel.es>