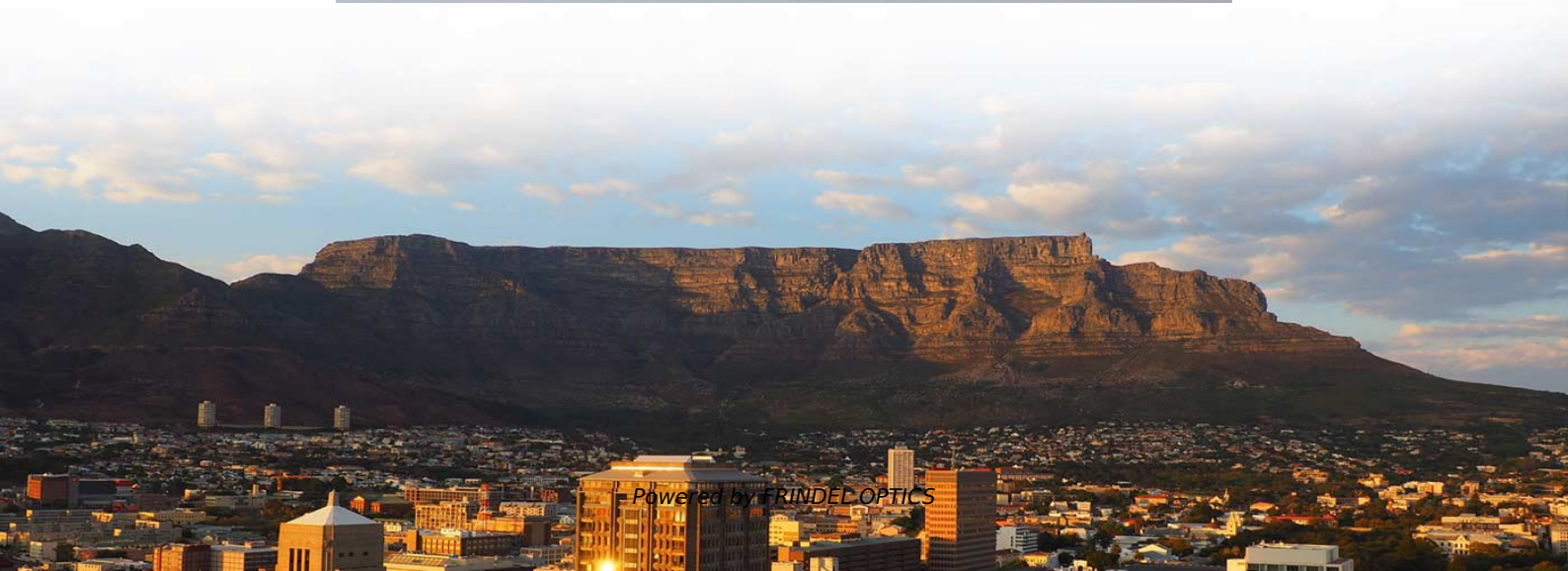


How to use the follow spot control module





How to use the follow spot control module



How to Operate a Follow Spot Series

How to Operate a Follow Spot Series Follow spot series are a powerful lighting device used to follow actors or props on stage and add dimension, dynamics and clarity. follow spot series

[Contact Us](#)

Operating the follow spot

During a performance, a stage manager will be talking to the follow spot operators over a PL system (a belt pack, two-way communications system). You can tape

[Contact Us](#)



Followspot Basics

Veteran Stagehand Tim Ramsay talks about and demonstrates the basic functions of a spotlight and discusses interfacing with bands, tour LDs

[Contact Us](#)



Mastering Follow Spots in Stage Management

Traditional Follow Spots: These are manual follow spots that require an operator to physically adjust the beam size, shape, and focus.

Automated Follow Spots: These follow spots use



GroundControl Followspot System , Prolight + Sound Blog

The newest development from PRG makes it possible for followspot operators control with greater flexibility. At the same time, the PRG GroundControl

[Contact Us](#)



Robe FollowSpot Manuals , ManualsLib

Robe FollowSpot Pdf User Manuals. View online or download Robe FollowSpot User Manual

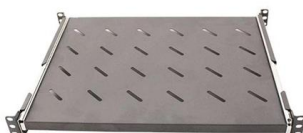
[Contact Us](#)



The Art of Follow Spot Operations

Take your follow spot skills to the next level with expert tips and tricks from industry professionals. Learn how to optimize follow spot performance and enhance your live productions.

[Contact Us](#)

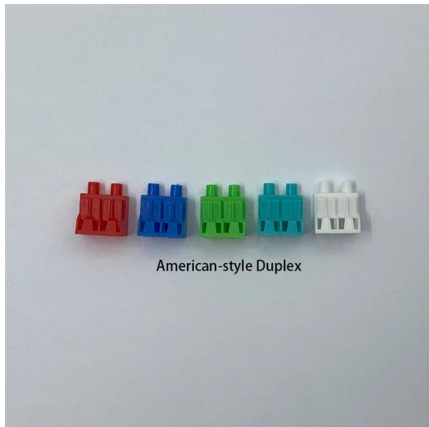




Follow-Me Remote Follow-Spot Control System an Ideal

Lighting designer, Matt Mills wanted to have more control over the follow-spots in his designs, and increased confidence in the consistency of their

[Contact Us](#)



PRG GroundControl Remote Followspot System User Manual

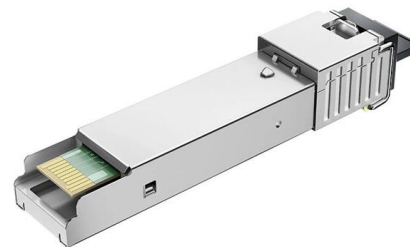
View and Download PRG GroundControl Remote Followspot System user manual online. GroundControl Remote Followspot System control systems pdf manual download. Also for: Gc rfs.

[Contact Us](#)

Theatrecrafts

Followspotting Tips and Tricks Theatrecrafts > Topics > Lighting > Followspotting Tips and Tricks A followspot is a special type of profile lantern

[Contact Us](#)



How do you control your followspots? : r/techtheatre

Manual control, simply because our followspots use lamps that can't be plugged into a dimmer, so they use an iris. Somebody did suggest fitting motors to automate it, but by that point you might as well

[Contact Us](#)



Followspot aiming tips

The follow spot operator doesn't get this help thus must be able to transition quickly between hitting a pre-assigned cue or pickup point and turning to watch and follow the action on

[Contact Us](#)



FOLLOW-SPOTS

FOLLOW-ME REMOTE FOLLOW SPOT CONTROL
Follow-Me started in 2010 as a simple, flexible and affordable way of using moving lights as follow-spots. The system improves on-show safety and

[Contact Us](#)



Product Catalog



YLZ

Introduction Thank you for selecting Macula. Macula is the only open Ground Controlled Follow Spot System open to any fixture of your choice. The Macula system can be used as a direct system or as

[Contact Us](#)



Control system for remote follow spot , All About Circuits

Hi All, I'm hoping someone out there can help me come up with a good way to create essentially a remote control for a moving head stage light, to use it as a follow spot. The lights have

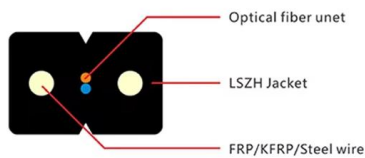
[Contact Us](#)



LED Followspot 120ST User Manual Rev. 2

To control the product in standalone mode, press until the Control Panel displays NAn. Then, simply use the button menu on the back of the product.

[Contact Us](#)



DMX Board, Followspot Standard Mode Tutorial

In this video, we explain how to use the Moving Head Controller 2.0 in Standard "Followspot mode" for a system with 2 Moving Heads. It is assumed that, at th

[Contact Us](#)

Followspot_User

Control data is supplied by a CAT5e cable that plugs into the controller and into one of the Ethernet ports on the front of the luminaire. The Followspot Controller will work on any Bad Boy luminaire

[Contact Us](#)



Follow_Spot_200ST_UM_Rev2

To access the control panel functions, use the four buttons located underneath the display. Please refer to the Product Overview to see the button locations on the control panel.

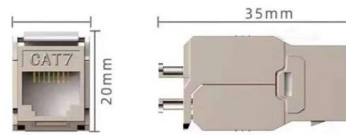
[Contact Us](#)



ROBE ROBOSPOT USER MANUAL Pdf Download

View and Download Robe RoboSpot user manual online. Base Station Set. RoboSpot professional video accessories pdf manual download. Also for:

[Contact Us](#)



GroundControl® Followspot System

GroundControl® 4-Way Switch lets users switch between up to four luminaires from one controller. GroundControl® Multi newest member of the product family,

[Contact Us](#)

ROBE ROBIN BMFL FOLLOWSPOT USER MANUAL Pdf Download

View and Download Robe Robin BMFL FollowSpot user manual online. Robin BMFL FollowSpot lighting equipment pdf manual download.

[Contact Us](#)



Followspot Basics

It can be an intricate part of a concert or theatrical production. The follow spot being demonstrated is a Strong Intl (Phoebus) Ultra Arc II long throw spot.

[Contact Us](#)



Eos & Followspot Control - Mike Wood

We ultimately decided that the best way was to put each spot into its own cuelist, and then trigger those cuelists using the main lighting cuelist. There

[Contact Us](#)



DMX Board, Followspot Standard Mode Tutorial

In this video, we explain how to use the Moving Head Controller 2.0 in Standard "Followspot mode" for a system with 2 Moving Heads.

[Contact Us](#)

Contact Us

For datasheets, pricing, or custom fiber access solutions, please visit:
<https://frindel.es>