

How to test the condition of a switch s optical port





Overview

Run the following command to view interface status information: `show port status <slot/port>` The output includes interface rate, duplex mode, module type, and link status (the link up state is a prerequisite for normal module operation). This article provides instructions on how to view the Optical Module Status on your switch through the Command Line Interface (CLI). When optical modules operate on a switch, it is usually necessary to read the module's internal information to understand its working status—such as connection status and real-time metrics like optical power and temperature. Cisco IOS has many commands that help network engineers check the switch, see its settings, and fix problems quickly. for example WS-X6724-SFP Is there no command to check fiber link?

?

Thank you 04-01-2009 10:48 PM It's got.



How to test the condition of a switch s optical port



View the Optical Module Status on a Switch through the Command

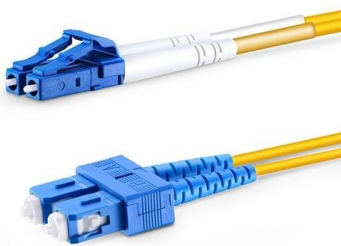
Once the transceiver and fiber optic cable are plugged in properly in the switch optical module, you should be able to view the current information for the optical connection, which helps you manage

[Contact Us](#)

Optical switches assist functional test

Unfortunately, so is the cost for optical test equipment, and delivery times may be long. You can decrease test time, reduce system operator intervention, and reduce the amount of

[Contact Us](#)



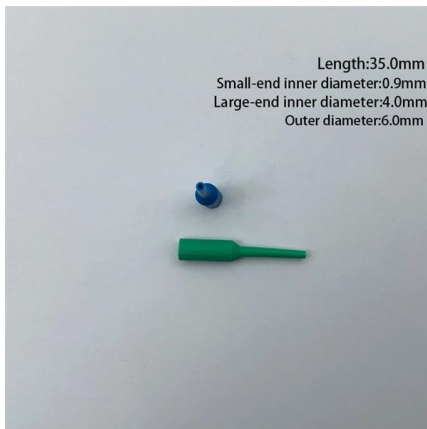
16 Tips to Troubleshoot Your Optical Transceiver Issues

The switch port may be faulty, or the optical transceiver may be overheated. If the optical transceiver is overheated, it will cause the switch port to

[Contact Us](#)

How To View Port Status And Optical Module

When an optical module is running on a switch, it is often necessary to read its internal information to check the operating status, including link status, real-time



Mouse Is Not Detected or Working in Windows

Solutions to fix a non-detected mouse in Windows. This guide offers troubleshooting steps for frozen systems, driver issues, hardware conflicts, and

[Contact Us](#)

View the Optical Module Status on a Switch through the

This article provides instructions on how to view the Optical Module Status on your switch through the Command Line Interface (CLI).

[Contact Us](#)



Troubleshoot Fiber Links on Catalyst 9000 Series Switches

This document describes how to troubleshoot fiber optic interfaces by addressing some of the fiber optic module and cabling specifications.

[Contact Us](#)

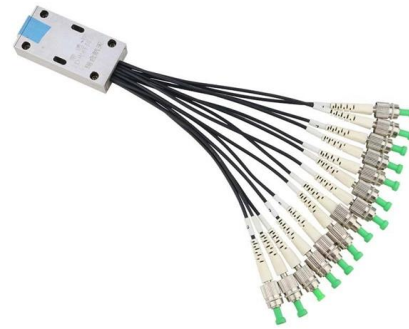




How To Check A Network Switch

Learn how to check a network switch for issues and troubleshoot common problems with this comprehensive guide. Understand the importance of

[Contact Us](#)



Useful Cisco Switch Verification Commands

Master essential Cisco switch verification commands! This guide provides a comprehensive overview of commands to check switch health,

[Contact Us](#)

How to Properly Test an Ethernet Switch

How to Properly Test an Ethernet Switch. For small businesses that need to connect a large number of nearby computers to the Internet, setting up a local wired

[Contact Us](#)



Ordering information

NO.	1	2	3	4
Model	P480	P192	P128	P192
Product name	Patch Panel	Patch Panel	Patch Panel	Patch Panel
Illustration				
RU	1	2	3	4
Maximum number of cores	96	192	384	384
Product size (excluding module and indicator)	482.0*208.7*43.3mm	482.0*208.7*86.6mm	482.0*208.7*129.9mm	482.0*208.7*173.2mm
Standard color code	RAL9005	RAL9005	RAL9005	RAL9005

How To View Port Status And Optical Module

To monitor the operating status of optical modules installed on a switch, it is necessary to read the module's internal information, including link

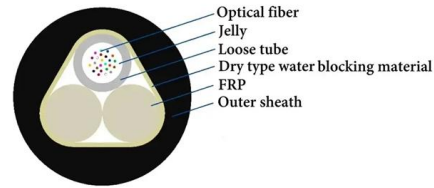
[Contact Us](#)



How To View Port Status And Optical Module Information On

This document uses the Moduletek SFP-10G-LR-BIDI optical module installed on an Extreme X690-48x-2q-4c switch as an example to demonstrate how to view port status and optical

[Contact Us](#)



Optical Module Failure Diagnosis and Prevention:

A comprehensive guide on Optical Module Failure diagnosis and prevention to maintain network stability through effective troubleshooting,

[Contact Us](#)

Cisco Catalyst 1200 Series CLI Guide

This chapter contains the following sections: test cable-diagnostics tdr show cable-diagnostics tdr show cable-diagnostics cable-length show fiber-ports optical-transceiver test cable

[Contact Us](#)



How To View Port Status And Optical Module Information On

When optical modules are installed on switches, it is necessary to read internal module parameters to monitor operating status, including link connectivity, real-time transmit/receive optical

[Contact Us](#)

How To View Port Status And Optical Module Information On DELL



Optical modules working on the switch usually need to read the internal information of the module to understand its working status, such as the module connection and real-time collection of

[Contact Us](#)



How to check fiber cable in cisco switch?

Solution: Clean the connectors, replace the cable if damaged, and use an optical power meter to check signal levels. In conclusion, checking fiber optic cables in a

[Contact Us](#)



Verify the Operation of an Optical Switch Port / SFP with the

How do you tell if an optical port or SFP is working? It's simple with the Fluke Networks CertiFiber Pro.

[Contact Us](#)



Comprehensive Guide to Fiber Optical Switch Maintenance: The Core

II. Port Inspection and Maintenance Fiber switch ports are gateways for data transmission, and their condition directly affects throughput efficiency. Maintenance personnel should

[Contact Us](#)





Solved: Testing fibre cables from a switch

Solved: Hi everyone, I have two new Cisco switches connected to each other with a fibre cable. Does anyone know any CLI commands to test the

[Contact Us](#)



Troubleshoot Switch Port and Interface Problems

This document describes how to determine why a port or interface experiences problems.

[Contact Us](#)

View the Optical Module Status on a Switch through the Command

This article provides instructions on how to view the Optical Module Status on your switch through the Command Line Interface (CLI). The Cisco Small Business Series Switches allow you to plug in a

[Contact Us](#)



How To View Port Status And Optical Module Information On Cisco

Additionally, identifying module information helps detect coding compatibility between the module and the switch. The following introduces the specific operations to view the working status

[Contact Us](#)



How To View Port Status And Optical Module Information On

Optical modules work on the switch usually need to read the internal information of the module to understand its working status, such as module connectivity and real-time collection of

[Contact Us](#)



Optical Fiber Cabling for Data Communication - Test and Troubleshooting

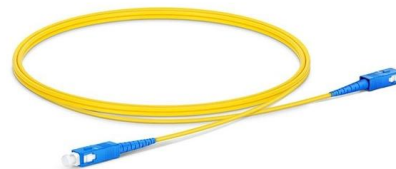
This booklet reviews best practices for test and troubleshooting methods as well as the test tools to ensure that installed optical fiber cabling provides the transmission capability to reliably support LAN

[Contact Us](#)

How do I know if my switch port is bad?

How Do I Know If My Switch Port is Bad? A switch port is a crucial component of a network infrastructure, and a faulty port can cause significant disruptions to your network operations.

[Contact Us](#)



Optical Transceiver Manufacturer,How To Check Optical

How to View Optical Module & Media Converter Details In the second step, in the privileged exec mode of the switch, enter the following command to display the

[Contact Us](#)



Fiber optic cable check command

The command "show interface transceiver detail" will NOT work on non-DOM (Digital Optical Monitoring) modules, like the SFP. If you have a 10Gb module or the ruggedized SFP, try

[Contact Us](#)



How to test fiber optic cable cisco switch?

By following these steps, you can effectively test and maintain fiber optic cables connected to Cisco switches, ensuring optimal network performance and reliability.

[Contact Us](#)

Contact Us

For datasheets, pricing, or custom fiber access solutions, please visit:
<https://frindel.es>