

How to set the FX-525N fiber optic sensor to stop at the designated position





How to set the FX-525N fiber optic sensor to stop at the designated



Panasonic FX-100 Digital Fiber Optic Sensor

By connecting a fiber sensor to the master fiber sensor, the master sensor settings can be copied along with data communications. When the same settings are input to several units, trouble from setting

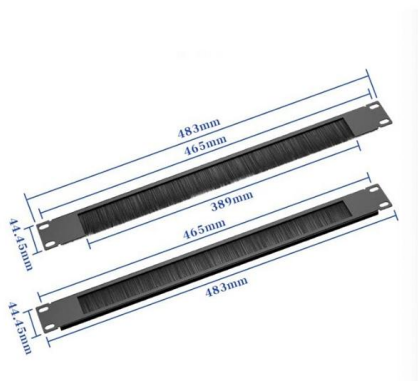
[Contact Us](#)

Panasonic FX-501, FX-502, FX-505 -C2 Digital Fiber Sensor

Learn about the features and functions of the Panasonic Digital Fiber Sensor Amplifiers FX-501, FX-502, and FX-505 -C2. This instruction manual provides instructions on teaching, settings, and optical



[Contact Us](#)



Digital Fiber Sensor FX-500 SERIES Ver

High stability! FX-500 series is used together with our super quality fiber, the incident light intensity variation among units is decreased to only 1/4 of that of conventional models. By being close to

[Contact Us](#)

3BL

We've helped over 1,500 organizations build stronger communications and distribute their stories on credible publishers that drive reputation.

[Contact Us](#)



Fiber Defender FD525TM User Manual

The fiber optic sensor works by measuring modulated laser radiation that results from potential intruders who vibrate the structure to which the fiber is attached.

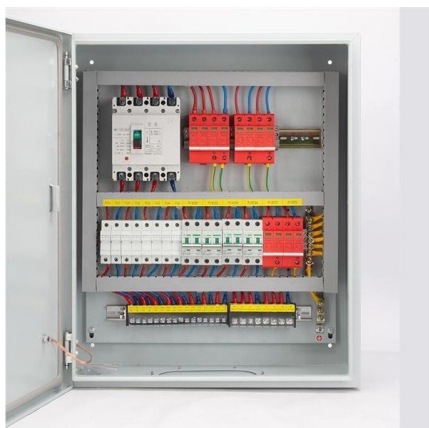
[Contact Us](#)



Digital Fiber Sensor Amplifier FX-500 Series PRO MODE

This mode can change the threshold value depending on the cycle (1 to 9,999 sec.) that is set with the variations of the incident light intensity. The tracking shift amount is the one which is set at the shift

[Contact Us](#)



FX-500 SERIES Ver.2

FX-502(P) / 505(P)-C2 can set Output 2 as a self-diagnosis output. When the teaching of Output 1's threshold value is carried out, Output 2 is set concurrently with the setting randomly shifted by the

[Contact Us](#)



FX-500 Series Instruction Manual

For details, refer to the instruction manual enclosed with the fibers. Snap the fiber lock lever 1 down as far as it will go. Insert the fiber cables slowly into the inlets until they stop (see note). Return the fiber

[Contact Us](#)



How to set optical fiber for Fix position electric eye (sensor)

How to set optical fiber for Fix position electric eye (sensor) EC Printing Machine Factory Limited 10.4K subscribers Subscribed

[Contact Us](#)



Digital Fiber Sensor FX-300 SERIES

FX-301-HS FX-305 If the light receiving level becomes saturated during close-range sensing or when sensing transparent or minute objects, you can adjust the light emitting amount of the sensor to

[Contact Us](#)



4 INSTALL MORE AMPLIFIER OF SERIES CONNECTION TYPE

(Note) 3. Return the fiber lock lever to the original position till it stops. 1. Snap 2. Insert 3. Return Fiber for receiver Fiber lock lever Fiber for emitter Note: With the coaxial reflective type fiber, insert the

[Contact Us](#)



Digital Fiber Sensor Amplifier FX-551 Series connection type. ME-FX551 No.0058-72V This product is not equipped with an automatic interference prevention function.

[Contact Us](#)



Panasonic FX-500 Fiber Optic Sensor w/ built-in Logic Control

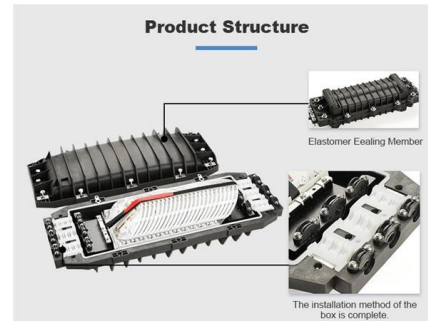
The FX-500 is a highly advanced digital fiber sensor with high-end features and class-leading stability and performance. An exclusive detection ASIC, designe

[Contact Us](#)

Digital Fiber Sensor Amplifier FX-505 -C2

When this product and other products (e.g. fiber sensor amplifiers, pressure sensor controllers, etc.) are connected together in cascade, install those prod-ucts so that they are in order of Group A, B, D and

[Contact Us](#)



Manually Set Fiber Sensor FX-311

Moreover, since the pointer of indicator has a red backlight, you can confirm the position at a glance, even in a dark area. Long life and reduced maintenance

[Contact Us](#)



DIGITAL FIBER SENSOR FX-500 SERIES Ver.2, FX-550 SERIES,

If multiple fiber sensors are installed in the same operating conditions, the incident light intensities are nearly identical. With the new sensor version, one exact threshold value can be managed across all

[Contact Us](#)



Panasonic FX-551 Series Digital Fiber Sensor Amplifier Instruction

This PDF document is an instruction manual for the Panasonic FX-551 series digital fiber sensor amplifier. It includes an overview of the product, function introductions, usage methods and

[Contact Us](#)

FX-500 Series Instructions

FX-501, FX-502, FX-505 -C2 Series Thank you for purchasing products from Panasonic Electric Works SUNX Co., Ltd. Please read this Instruction Manual carefully and thoroughly for the correct and

[Contact Us](#)



Digital Fiber Sensor Amplifier FX-551 Series INSTRUCTION MANUAL

Snap the fiber lock lever down till it stops completely. QVHUW WKH ¿EHU FDEOHV VORZO LQWR WKH LQOHVV until they stops. (Note) Return the fiber lock lever to the original position till it stops.

[Contact Us](#)



FX-501

FX-501 MJE-FX501C No.0035-73V Thank you very much for purchasing Panasonic products. Please read this Instruction Manual carefully and thoroughly for the correct and optimum use of this product.

[Contact Us](#)



Manually Set Fiber Sensor FX-311 SERIES

The FX-311 series has a convenient built-in "assist function" which indicates the optimum sensitivity position by flashing rapidly when optimum sensitivity is reached. This enables easy and reliable

[Contact Us](#)

Fiber optic sensor amplifier FX-525

Download Fiber optic sensor amplifier FX-525. Available for SOLIDWORKS, Inventor, Creo, CATIA, Solid Edge, autoCAD, Revit and many more CAD software but also as STEP, STL, IGES, STL,



[Contact Us](#)



Digital Fiber Optic Sensor/Amplifier Wiring and Setting

Fiber optic sensor has a digital LED display and 3-wires out lines. Digital fiber optic sensor is used for detection, counting and position control in the occasions with high accuracy

[Contact Us](#)



Digital Fiber Sensor Amplifier FX-505 -C2

Be sure to fit the attachment to the fibers first before inserting the fibers to the amplifier. For details, refer to the instruction manual enclosed with the fibers.

[Contact Us](#)



Panasonic FX-501, FX-501P Instruction Manual , Manualzz

Instruction Manual for Panasonic FX-501, FX-501P digital fiber sensor amplifiers. Learn how to connect the fiber cable, set sensing output modes, use teaching modes, fine-tune threshold values, and more.

[Contact Us](#)



Digital Fiber Sensor Amplifier FX-500 Series PRO MODE

" ": Set when using the interference prevention function by optical communication. Maximum adherence mounting of sensor head is 12 units "

" ": Set when using interference prevention function by changing

[Contact Us](#)



FX-500 SERIES Ver.2

3 logical calculations (AND, OR, XOR) are available with fiber sensor only. 3 logical operations can be selected against Output 1. Additional controller is not required so both wire-saving and cost reduction

[Contact Us](#)



Contact Us

For datasheets, pricing, or custom fiber access solutions, please visit:
<https://frindel.es>