

How to reduce the size of cable tray elbows





Overview

Cable trays reducers are specialized connectors designed to join different sizes of cable trays. This article breaks down cable tray dimensions in a clear, practical, and engineering-driven way. The mechanical and electrical characteristics, tests, certifications, overall quality management, recommendations mentioned in this technical guide only apply to our own cable management ranges and cannot under any circumstances be transposed to silicone, overheating or.



How to reduce the size of cable tray elbows



Cable Tray Dimensions Guide: Standard Sizes, Tray

We will first explain standard cable tray dimensions used across the industry, then examine how dimensions vary by tray type, and finally show how to

[Contact Us](#)

TECHNICAL AND SIZING DATA

Once the designer has ascertained what cables are being used and their construction, he must determine the size of the ladder tray cavity. Please reference the following section on Technical

[Contact Us](#)



Learn REVIT Fast LRF-ELEC-01-03 - Cable Tray - Revit news

4. Cable Tray Fittings When drawing trays that intersect or change direction, Revit will auto-generate fittings (elbows, tees, crosses) based on the project settings. Emphasizes the importance of loading

[Contact Us](#)

Cable Tray Systems: Requirements and Best Practices

Comprehensive guide to cable tray systems requirements: tray types, materials, loading, supports, bonding, routing, and best practices for safe electrical cable management.



Cable Tray and Trunking Overview , PDF , Length

The document discusses different types of cable containment systems including cable trays, cable ladders, and cable trunking. It provides details on the

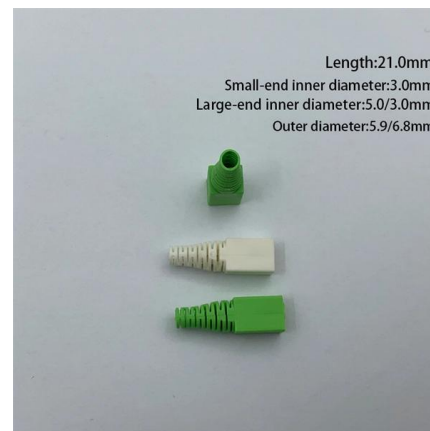
[Contact Us](#)



Vertical Cable Support Elbow , Ladder Trays , Cable Tray and Reels

The aluminum I-beam design of ITray is perfect for industrial installations with large diameter cables in long span situations, minimizing total tray width and creating a smooth transition between straight

[Contact Us](#)



Everything You Need to Know About Cable Trays

In this article, we will dive deep into what cable trays reducers are, why they are important, their types, and how to select the right ones for your system.

[Contact Us](#)





Cable Tray Dimensions Guide: Standard Sizes, Tray

Explore standard sizes by tray type, understand width and depth limits, and see how to calculate and choose compliant cable tray sizes for real projects.

[Contact Us](#)



A Guide to Cable Tray Accessories and Their Functions

Cable Tray Accessories Types and Their Functions Cable tray accessories are crucial components that transform simple tray sections into a

[Contact Us](#)



Complete cable tray manual for electrical engineers and

Fewer supports have to be designed and less coordination is required between the design disciplines for the cable tray supports compared to conduit supports.

[Contact Us](#)



Reducers , Cable Tray Systems , Power Utility Products

Cable Tray Reducers are offered for cable tray systems of varying capacities, ranging from light to heavy duty. These reducers effectively decrease the width of

[Contact Us](#)





Cable Tray Technical Guide A practical guide to product selection and

Cable Tray Technical Guide A practical guide to product selection and installation This guide for engineers and installers has been developed by ABB as a practical reference regarding cable tray

[Contact Us](#)



CABLE TRAYS

Vari-cleat cable cleats are available for trefoil single and bundled cable applications where moderate levels of short circuit withstand are required. The unique patented compact design allows the

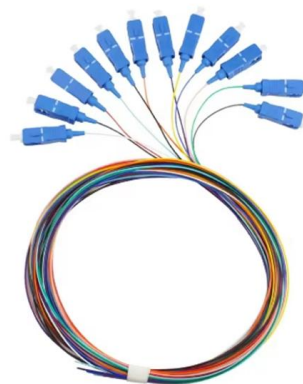
[Contact Us](#)



Cable Tray Size and Dimensions: How to Choose the

Learn how to calculate the perfect cable tray size and dimensions for your electrical project. This guide covers load capacity, fill ratios, and industry

[Contact Us](#)



Cable Tray Size Calculation for Project Engineers

Cable tray size calculation is important for ensuring safe cable installation, proper heat dissipation, and enough spare capacity for future

[Contact Us](#)



Cable Tray Technical Guide A practical guide to product selection and

Reduce the loading When anchoring supports for cable tray, it is extremely important to avoid cutting or drilling into structural building components, such as I-beams, unless approval has been given by the

[Contact Us](#)



30° Vertical Elbow , Cable Tray Systems , PUPCO

Discover our 30° Vertical Elbow for cable tray systems. Seamlessly transition between sections and fittings, reducing tray width. Contact us today!

[Contact Us](#)

CABLE TRAY, CABLE LADDER, CABLE TRUNKING CATALOGUE

Fitting and accessories. Fittings are accessories that connects this cable tray to another cable tray to changing direction with the same or different width of the cable run. All fittings are available in sizes

[Contact Us](#)



TECHNICAL AND SIZING DATA

The designer is able to: 1) load his tray more heavily, 2) make more extensive use of 152 mm (6") high tray and 3) reduce the number and width of tray in his system design.

[Contact Us](#)



Cable Tray

FITTINGS Fittings are sections of cable trays which are joined to other cable trays sections for the purpose of changing the direction, elevation or width of the cable run. All fittings are available in sizes

[Contact Us](#)



Cable structure

electrical #cable tray# making 90,° elbow

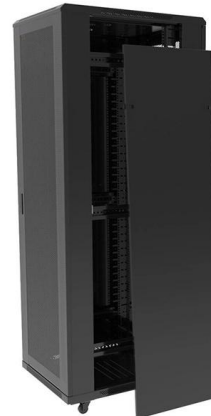
Creating a 90-degree elbow in an electrical cable tray, often called a "fabricated" or "mitered" bend, involves cutting, bending, and fastening a straight section of tray.

[Contact Us](#)

Cable Tray Systems

Find Cope I-BEAM straight reducers for cable tray systems. Designed to fit multiple NEMA classes with durable splice plates.

[Contact Us](#)



Cable Tray Design and Components Guide

This document provides information about cable trays and accessories, including straight cable trays, perforated trays, returned edge and flange types, and bent

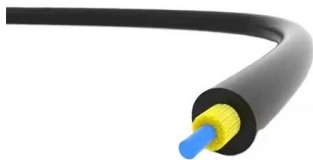
[Contact Us](#)

GUIDE CABLE TRAYS TECHNICAL



cable trays are equivalent. The mechanical and electrical characteristics, tests, certifications, overall quality management, recommendations mentioned in this technical guide only apply to our own cable

[Contact Us](#)



Cable Tray Size Calculation for Project Engineers

Cable trays are essential for organizing and supporting electrical and communication cables, as well as assuring safe installations. Choosing the

[Contact Us](#)

CABLE TRAY, CABLE LADDER, CABLE TRUNKING CATALOGUE

Fitting and accessories. with the same or different width of the cable run. All fittings are available in sizes and types corresponding to the straight cable tray sections. These fittings are including: elbow,

[Contact Us](#)



Contact Us

For datasheets, pricing, or custom fiber access solutions, please visit:
<https://frindel.es>