

# How to install the fiber optic tray in the server rack





## Overview

---

Remove the liner from the tape on each spool and place them inside the enclosure. Mount the enclosure to the rack using (4) #12-24 screws. Let's examine the specialized techniques and components needed to properly organize, route, and protect fiber optic cables in server rack environments. Quick, easy, and essential for fiber pigtail management! Before plugging into a port or patch panel, the installer must inspect the surface of the fiber optic glass end point (ferrule) with a microscope and, if needed, clean the connector with a one-click cleaner. So to attain efficient network rack cable management, you'd better perform the following steps. Proper fiber management inside rack and wall mount enclosures is vital for maintaining reliability, protecting delicate optical connections, and ensuring your network infrastructure remains easy to service. Whether you're working with a small telecommunications closet or a high-density data center.



## How to install the fiber optic tray in the server rack

---



### How to Manage Fiber Optic Cables in a Server Rack?

Learn how to manage fiber optic cables in a server rack. Discover cable management tips, how to bundle fiber cables, and accessories for easy

[Contact Us](#)

### HES Series Installation Guide

There are 5 undrilled U-shaped Fiber Cable Input Holes reserved for flexible fiber installation. To use these holes for fiber installation, first use a mini hand drill to drill U-shaped holes as pre-outlined in

[Contact Us](#)



### FS Slide-Out Rack Mount Fiber Enclosure Installation

FS slide-out rack mount enclosure shall house, organize manage, and protect fiber optic cables, fiber cassettes, fiber optic panels, and splices. It has multiple sizes

[Contact Us](#)

### How To: Install Fiber Optic Cable for Success - trueCABLE

These are use cases for which they were not originally intended. Although fiber optic patch cords are constructed to provide some protection from



**faker/internet.go at master · pioz/faker · GitHub**

Random fake data and struct generator for Go. Contribute to pioz/faker development by creating an account on GitHub.

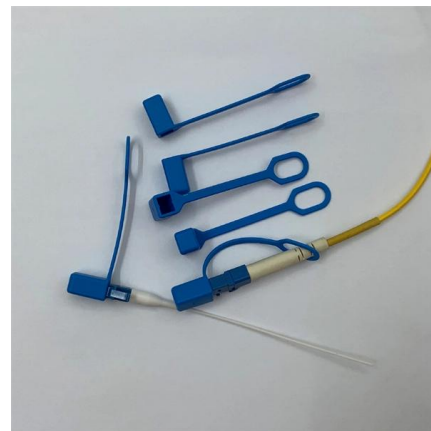
[Contact Us](#)



**How the AI Infrastructure Boom is Reshaping Fiber Optic Network**

The AI buildout is reshaping fiber optic networks. Learn how rising rack densities, east-west traffic, and 1.6T speeds are changing design choices.

[Contact Us](#)



**waifu-diffusion/tokenizer/vocab.json at main · jack-op11/waifu**

Contribute to jack-op11/waifu-diffusion development by creating an account on GitHub.

[Contact Us](#)

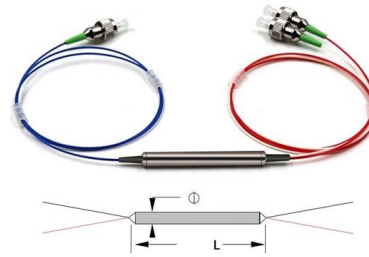




### zxcvbn-rs/src/frequency\_lists.rs at master

Port of Dropbox's zxcvbn password strength library for Rust - shssoichiro/zxcvbn-rs

[Contact Us](#)



### How to manage fiber optic cables in a server rack

Fiber optic cables are a bit more delicate than their copper counterparts but that doesn't mean cable management needs to be difficult!

[Contact Us](#)



### How to manage fiber optic cables in a server rack

How to properly manage fiber optic cables Some key factors to think about when managing fiber optic cables are: Availability / scalability Cooling

[Contact Us](#)



- TELECOM CABINET
- BRAND NEW ORIGINAL
- HIGH-EFFICIENCY

### Data Center Cable Tray Design Guide , PDF , Optical

This document outlines best practices and engineering standards for designing and implementing structured cable and fiber tray systems in modern data centers. It

[Contact Us](#)



### Splicing 250 μm Fiber in a Splice Tray for



## Rack-Mount

Quickly learn how to properly splice an optical fiber into a standard splicing tray. This video focuses primarily on properly accessing and routing the cable before and after splicing.

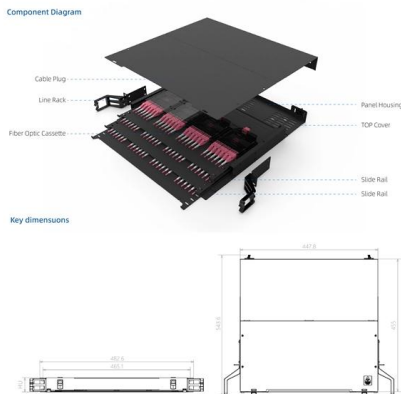
[Contact Us](#)



## Opticom Rack Mount Fiber Enclosure

Remove the knock-out at entry location of the fiber tray. Install grommet following the proper cutting diagram. Place the strain relief bracket near area where the cable will enter the enclosure. Fasten

[Contact Us](#)



## Best Practices for Managing Fiber in Rack and Wall Mount Enclosures

Learn how to properly organize, route, and protect fiber inside rack and wall mount enclosures while maintaining airflow and accessibility for maintenance.

[Contact Us](#)



## A Guide to Server Rack Cable Management for Fiber

This guide details tips for achieving organized server rack cable management within the server rack and the essential cable management tools

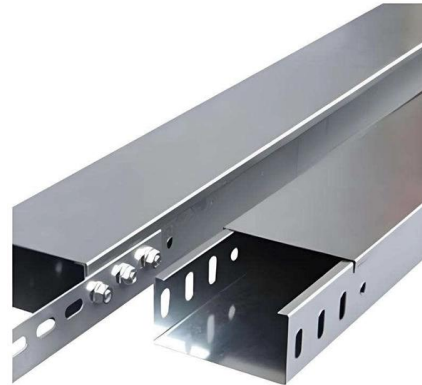
[Contact Us](#)



## Fiber Optic Hardware , Fiber Panels, Housings, Racks, and Splice Trays

Corning has a variety of hardware solutions including ethernet fiber switches, panels, racks, splice trays, and other structured cabling components.

[Contact Us](#)



### Universal Splice Tray Installation Instructions

It is recommended to place the first tray in the lowest position and build out when adding new trays and facing up when open for splicing. Position one of the hinge tabs into the desired position hole. Align

[Contact Us](#)

### How to Install a Fiber Optic Splice Tray Step by Step #

Learn how to install fiber splice trays inside an enclosure step by step. Quick, easy, and essential for fiber pigtail management! <https://bit.ly/4n8OCjl>.

[Contact Us](#)



### Fiber Optic Patch Cables: The Complete 2026 Buyer's Guide

Confused by LC, SC, MPO, UPC, and APC? This complete fiber optic patch cable guide covers connector types, single-mode vs multimode, insertion loss specs, and how to choose the right

[Contact Us](#)

## Fiber optic Rack , Foss Fibre Optics



Fiber optic Rack for front mounted equipmen. It is produced in aluminium ensuring low weight and simple transport. It has profiles with slide rails that allows

[Contact Us](#)



### **Fiber Optic Jobs, Employment in South Florida, FL , Indeed**

81 Fiber Optic jobs available in South Florida, FL on Indeed . Apply to Senior Field Technician, Network Engineer, Solar Technician and more!

[Contact Us](#)

### **Fiber Cable Tray System**

Cut the flexible hose to the desired length, then insert one end of the hose into the hose bracket and route the hose to the desired location at the top of the cabinet/rack.



[Contact Us](#)



### **15 BEST PRACTICES FOR DATA CENTER FIBER-OPTIC CABLING**

Best practice: Copper and fiber trunk/bulk runs should be separated in either the same tray or run in separate trays. This reduces the potential for dB link loss in fiber from kinks and pressure build-up.

[Contact Us](#)



## 15 BEST PRACTICES FOR DATA CENTER FIBER-OPTIC CABLING

Optimize data center cable installation with this FREE guide from CABLExpress! Learn best practices for labeling, service loops, and more. Download now!

[Contact Us](#)



## Contact Us

---

For datasheets, pricing, or custom fiber access solutions, please visit:  
<https://frindel.es>