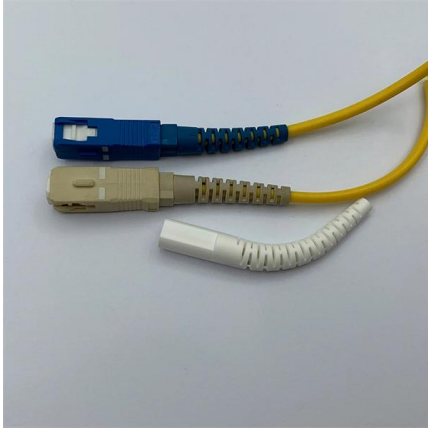


How to install an internal cable routing ramp





How to install an internal cable routing ramp



Cable Routing

In the interest of safety and longevity, one cannot simply route electrical power and signal cables randomly between different locations.

[Contact Us](#)

CABLE RAMP

When connection you must press down the join where the Cable Ramps meet in order to secure the connection. Once more Cable Ramps have been added, slot into the other and repeat the drilling

[Contact Us](#)



How To Replace A Cable On A Bike With Headset Cable Routing

Working on a bike with headset cable routing can seem daunting, but Owen Coutts is here to show you that it's not as tricky as it seems.

[Contact Us](#)



How To Fit Internal Cables On A Road Bike

With most top end road bikes now having internal cables, it's a job that you may have to start doing sooner rather than later. Actually fitting the cables isn't an exact science.

[Contact Us](#)



Mountain Bike Action

We like the Park Tool IR-1.3 internal cable-routing kit. These instructions are for a brand-new build, and it's time to run the cable to the dropper.

[Contact Us](#)



How to Install a Dropper Post Internal Cable: A Step-by-Step Guide

Start by removing the seat post and old cable (if applicable). Identify your frame's internal routing ports--most modern

[Contact Us](#)



How to Install a Dropper Post Internal Cable: A Step-by

Route the housing to the lever, trim excess, and secure the cable with the provided clamp. Tighten the lever bolt, but leave room for fine-tuning later.

[Contact Us](#)





how to install internal cables on a road bike

Internal cable routing not only provides a cleaner look but also protects cables from dirt and damage, ensuring smoother shifting and braking. This guide will walk you through the steps necessary to

[Contact Us](#)



What are the best practices for cable routing and installation?

Discover the best practices for cable routing and installation to ensure efficient and reliable network cabling infrastructure. Tips, examples, and more from CMW.

[Contact Us](#)

Internal Cable Routing made EASY!

UPGRADE Your Bike with Aero Handlebars and Integrated Cables! Internal Routing of Dropper Seat Post - LIVE! - Tech Tuesday #57 Integrated cables conversion tutorial - Giant TCR Pro

[Contact Us](#)



Cable Route

Cable route refers to the designated path that cables, such as instrument and electrical cables, follow within a facility, often utilizing equipment like cable trays or ladders to ensure proper organization and

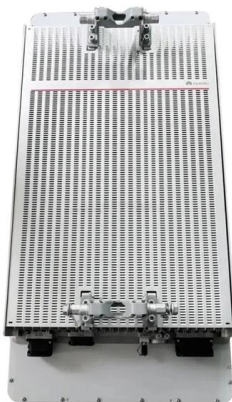
[Contact Us](#)



Tricks for Internal Cable Replacement

Cable protection, too Internal cable routing serves another purpose, which is to protect the cables (or wires in the case of electronic components) from being

[Contact Us](#)



CABLE RAMP

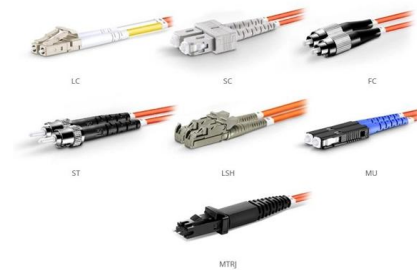
Once more Cable Ramps have been added, slot into the other and repeat the drilling process. Open hi-visibility yellow lid and install your cables along the channels. When adding your cabling to the

[Contact Us](#)

Internal Cable Routing Tips for Mountain Bikes

Internal cable routing for a mountain bike frame doesn't need to be a thing of mystery. Sam James shows us how to make it simple.

[Contact Us](#)



OM1 Fiber Patch Cable Family

8-Port PLC Fiber Splitter Box

12-Port SC Fiber Splitter Box

Size: 235*215*75mm
Material: ABS, IP65,



Cable Ramp Technical Details and Installation Guide

CABLE RAMP An effective cable protection solution to allow free and easy movement of both pedestrians and heavy plant and machinery on site.

[Contact Us](#)



IR-1.3 Internal Cable Routing Kit , Park Tool

Reduce internal routing-induced headaches with this simple-yet-comprehensive set of guide cables and magnets, with six unique fittings to route housing, cables,

[Contact Us](#)



How to Install a Dropper Post Internal Cable: A

Start by removing the seat post and old cable (if applicable). Identify your frame's internal routing ports--most modern

[Contact Us](#)

PN535

Once the fiber optic cables have transitioned from the FiberRunner™ into the rack or cabinet, it is critical to properly manage the cable routing prior to entry to the rack-mounted fiber enclosures or

[Contact Us](#)



Cable routing , Tips for proper cabling , Simply explained

Flexible cable routing solutions make it easier to make adjustments to the enclosure configuration, install new devices or add extensions. Accessibility is also

[Contact Us](#)



How To Fit An Internally Routed Gear Cable? (With

Fitting a gear cable should be a relatively simple task for most experienced bike mechanics. However, fitting an internally routed inner and outer

[Contact Us](#)



HOW TO: Route internal gear cables

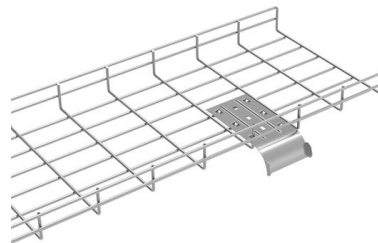
Want to learn how to easily install those fiddly internal cables? Here's how to do it, step by step, the Park Tool way and the Hack Tool way. Got any other hacks?

[Contact Us](#)

INTERNAL ROUTING THE EASY WAY

INTERNAL ROUTING THE EASY WAY Internal cable and hose routing is great until you have to work on it. The clean, sleek lines are all but

[Contact Us](#)



Internal Routing of Dropper Seat Post

Calvin demonstrates internal cable routing to a dropper seat post using the Park Tool IR-1 Internal Cable Routing Kit. This Tech Tuesday was originally streamed live on Facebook!

[Contact Us](#)



Threaded #14: an easier route to internal cable routing

Internal cable routing is a topic with plenty of nuances that can only be learned through doing. This edition of Threaded covers just a few tips, tools, and

[Contact Us](#)



PN535

When routing distribution or interconnect cables from FiberRunner™ pathways to an equipment rack or cabinet, an appropriately sized spill-out should be used to assist in the transition from the pathway to

[Contact Us](#)



How to Use the IR-1 & IR-1.2 Internal Cable Routing Kit

Demonstration of the IR-1 Internal Cable Routing Kit. These instructions also apply to the updated IR-1.2, which also includes an additional cable with a dedicated E-tube Di2 cable connector.

[Contact Us](#)



Internal routing tips for installing cables and housing for all

Internal routing tips for installing cables and housing for all components. On the new Ibis DV9 hardtail I show how to install housing for the dropper post.

[Contact Us](#)





Internal Cable Routing NIGHTMARE?

2004 Klein Aura X 58cm - Installing Cables and Housing Shimano 6500 group set - Part 5.1 I
Know A Guy Bicycles - Hanging Out With The Guy
- Internal Cable Routing

[Contact Us](#)



Internal Cable Routing

Remove the old cable (leaving the liner in the frame!) and insert the new cable through the liner. Slide the liner out of the frame, and your cables are routed perfectly.

[Contact Us](#)



Cable Ramp Technical Details and Installation Guide

Before installation, please inspect the area for any obstructions. Installation must be carried out on a flat and stable surface, avoid inclines and broken ground as damage could occur.

[Contact Us](#)



How to Install a Dropper Post Internal Cable: A Step-by

Cut the cable housing to length, allowing extra slack for adjustments. Feed the housing through the frame's internal channels, starting at the seat tube

[Contact Us](#)





Contact Us

For datasheets, pricing, or custom fiber access solutions, please visit:
<https://frindel.es>