

How to insert large cables into cable trays

Focus creates quality products





Overview

Mark the cable tray route based on your electrical cable tray design and site layout. When completely installed, without damage either to conductors or structural system use maintain spacing or to keep cables in place when the tray is erect the minimum bend radius for cables as they exit the bottom of the cable tray.



How to insert large cables into cable trays



Master Cable Tray Installation: A Professional Step-by-Step Guide for

Learn how to install cable trays for large-scale projects with our professional, step-by-step guide covering industry standards, safety protocols, and efficient routing techniques.

[Contact Us](#)

Step-by-Step Guide to Installing Cable Trays Safely

Step-by-step guide to safe cable tray installation for industrial wiring. Improve safety, prevent overheating, and ensure organized cable management.



[Contact Us](#)



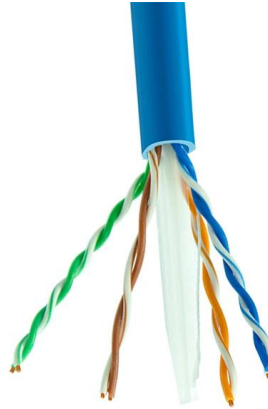
How To Install Cable Tray On Wall: A Step-By-Step Guide

Cable trays are essential for safely organizing cables along walls or ceilings, especially in industrial or commercial spaces. They're a straightforward

[Contact Us](#)

How to load cables into cable tray with lock

With the cable trays S20N, S21N and S22N from SILTEC it is easy for you to organize and load several cables into a wire mesh cable tray. For more details and



Best Practices for Installing Cables in Trays

Learn the best practices for installing cables in trays. This guide covers essential steps, technical requirements, and key details for efficient cable

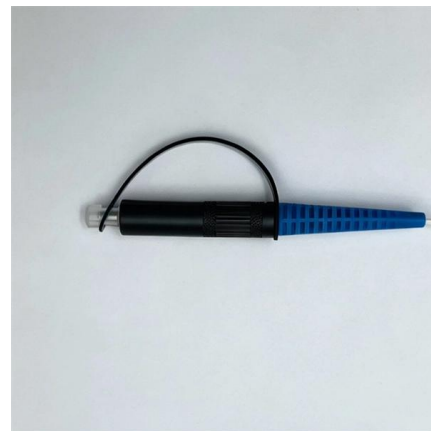
[Contact Us](#)



Installation Of Cable In Cable Trays: NEC, Safety

For over thirty years, the use of a ladder-type tray as a rigid structural system for support of cables has grown dramatically. Accompanying this increase is the

[Contact Us](#)



DIY Installation: Mastering Light Duty Cable Tray Setup

Introduction In cable management, an often overlooked but crucial component is the cable tray. Cable trays support and organise cables, ensuring a tidy and efficient infrastructure. While

[Contact Us](#)

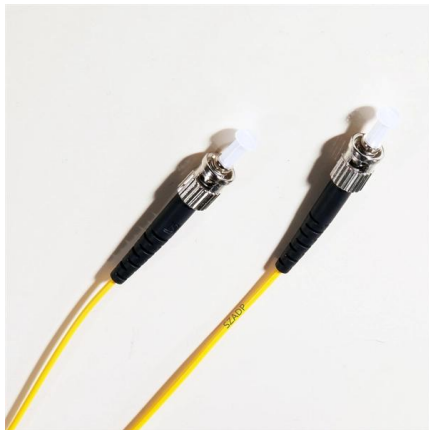




Mastering Cable Tray Installation , Step-by-Step Guide for a Seamless

Learn how to install cable trays correctly. Get the ultimate step-by-step guide on setting up a seamless and reliable cable management system.

[Contact Us](#)



Best practice guide to cable ladder and cable tray

Cable ladder and cable tray systems The following recommendations are intended to be a practical guide to ensure the safe and proper installation of

[Contact Us](#)

A Guide to Installing and Supporting Electrical Cable Trays

A professional guide to installing electrical cable tray systems per NEC Article 392. Covers support, securing cables, and fill calculations.

[Contact Us](#)



5 Steps to Learn How to Install Cable Trays

Installing a cable tray system requires careful planning to ensure it can support the weight of the cables and adheres to electrical safety codes. Here

[Contact Us](#)

How to Install a Wire Mesh Basket or Cable



Tray , CMW

Learn how to properly install a wire mesh basket tray or cable tray for effective cable management. Tips, tools, and advice from the experts at CMW.

[Contact Us](#)



Wire Duct, Raceway & Tray

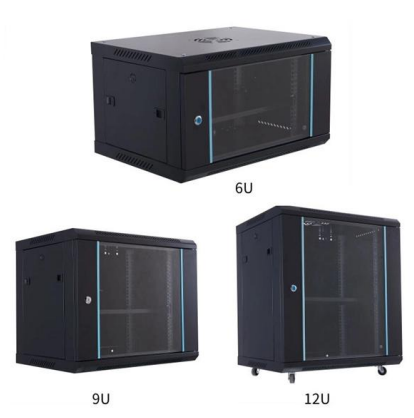
Wire Duct, Raceway & Tray Protect your employees and equipment from harm by using wire ducts, raceways and trays for cable containment and organization. Easily integrated into existing systems,

[Contact Us](#)

How to Install Cable Tray: A Comprehensive Guide to Different Cable

Welcome to our step-by-step guide on installing cable trays! In this video, we'll explore the different types of cable trays available and provide detailed instructions for their installation.

[Contact Us](#)



Cable Tray Installation

Cable Tray Technical Guide A practical guide to product selection and

In designing supports for a cable tray system, consideration should be given to the loads associated with future cable additions and any additional loading that may be applied to the cable tray system (e.g.,

[Contact Us](#)



Learn everything about cable tray installation with our complete guide. Discover types, steps, and safety tips for efficient electrical cable management.

[Contact Us](#)



INSTALLATION GUIDE

Center hung tray supports allow for quicker and easier cable installation by allowing cables to be deposited into tray systems from each side. There is a maximum load capacity per hanger of 318 kg

[Contact Us](#)

Cable Tray Technical Guide A practical guide to product selection and

SOLID-BOTTOM CABLE TRAY Providing additional cable protection, solid-bottom cable tray is sometimes preferred to support and protect numerous small instrumentation and control cables.

[Contact Us](#)



Ampacity of Power Cables Installed in Cable Trays

Cable ampacity, the maximum current-carrying capacity, is a critical factor in the design and operation of power cable systems. Cables installed in trays have

[Contact Us](#)





Connecting Cable Trays: Your Guide to Secure and

Learn common methods for connecting cable trays safely and efficiently. Our guide covers splice plates, quick-connects, and key tips for secure

[Contact Us](#)



A Guide to Installing and Supporting Electrical Cable Trays

This guide covers the critical steps, from selecting the right electrical cable tray and performing accurate cable fill calculations to managing a safe cable pull through

[Contact Us](#)

Contact Us

For datasheets, pricing, or custom fiber access solutions, please visit:
<https://frindel.es>