

How to ground a distribution box using soft copper wire





Overview

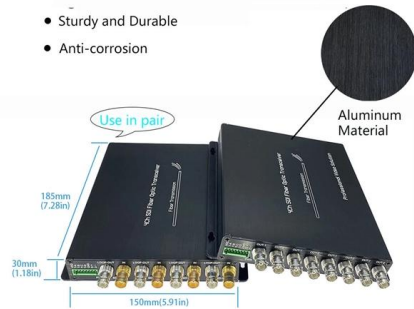
26 mm² (10 AWG) ground wire must be used, and in all other markets a 6 mm² must be used. The correct connection method of Distribution box grounding wire mainly includes the following steps: 1. However, for experienced DIYers, this guide provides a detailed, step-by-step approach to ensuring your circuit breaker box is properly grounded, enhancing electrical safety grounding throughout your home. This helps to reduce the potential difference that exists between conductive parts and the earth. Whether you're a seasoned pro or just starting out, this comprehensive guide will give you practical insights into proper grounding techniques, with a special focus on how selecting quality materials from a reliable building material supplier impacts your entire system's safety and longevity.



How to ground a distribution box using soft copper wire

High Quality Aluminum Housing with Compact Size

- Sturdy and Durable
- Anti-corrosion



How to Properly Ground a Metal Electrical Box

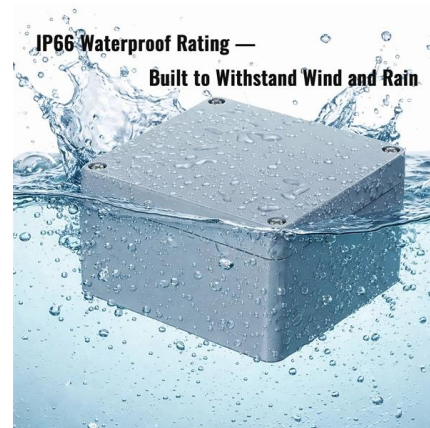
Ensure electrical safety. Learn the crucial steps for properly grounding metal electrical boxes to prevent shock hazards.

[Contact Us](#)

How to Ground a Metal Electrical Box: A Step-by-Step Guide

Learn how to ground a metal electrical box in 3 easy steps. This guide will walk you through the process, from identifying the grounding point to connecting the ground wire. With our help, you can safely

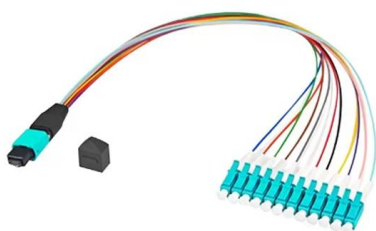
[Contact Us](#)



Nine Recommended Practices for Grounding

Bond all metal enclosures, raceways, boxes, and equipment grounding conductors into one electrically continuous system. Consider the installation of an

[Contact Us](#)



Grounding Practices in Power Distribution Systems

It is absolutely necessary to implement efficient grounding in distribution systems in order to guarantee the safety, dependability, and performance of the electrical



Method for making the ground wire of a household distribution box

Connect one end of the insulated copper wire to the grounding grid and lead the other end into the distribution box and connect it to the ground bus bar of the distribution box.

[Contact Us](#)

Bare Copper Wire for Grounding , Eng-Tips

Soft drawn copper (or annealed copper) has a lower breaking strength than hard drawn copper, however, it does have lower resistivity. Use the soft drawn for your ground wire. Use hard

[Contact Us](#)



DISTRIBUTION BOX

Each DISTRIBUTION BOX and controller must be grounded. On the US market, a 5.26 mm² (10 AWG) ground wire must be used, and in all other markets a 6 mm² must be used.

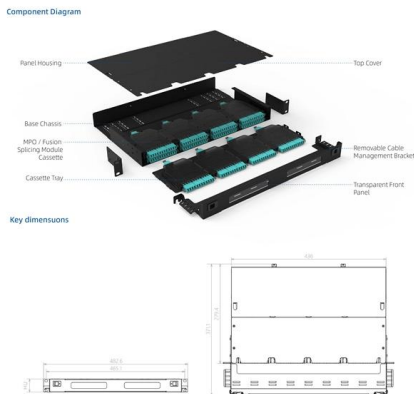
[Contact Us](#)



DISTRIBUTION BOX

Each DISTRIBUTION BOX and controller must be grounded. On the US market, a 5.26 mm² (10 AWG) ground wire must be used, and in all other markets a 6 mm² must be used.

[Contact Us](#)



How To Run A Ground Wire To An Electrical Panel Box

Your service panel's ground wire prevents a line fault from becoming a shocking experience. By shunting excess line voltage back to the panel's neutral pole, the ground current

[Contact Us](#)

How To Ground A Circuit Breaker Box Safely: A Step-by

Q1: How do I know if my circuit breaker box is grounded? A: Look for a thick bare copper or green wire extending from the grounding bus bar inside

[Contact Us](#)



How to Ground a Circuit Breaker Box: Essential Steps

Grounding a circuit breaker box is essential to ensure safety and compliance with the National Electrical Code (NEC). To ground your circuit

[Contact Us](#)



What Is a Ground Wire & How It Works , TRADESAFE

What is a ground wire? Discover how it works, why it's essential for safety, and how proper grounding protects against electric current risks.

[Contact Us](#)



Ground Wire Size Chart NEC 2026: Complete

Master NEC ground wire sizing with complete Table 250.122, copper/aluminum conductor comparisons, and practical examples for safe

[Contact Us](#)



DETAILS DISPLAY

Focus On Every Detail



01

Neat & Clean Layout

Cleaner arrangement of components, Easy to operate

Grounding System Installation Standards for Distribution Boxes and

Whether you're a seasoned pro or just starting out, this comprehensive guide will give you practical insights into proper grounding techniques, with a special focus on how selecting quality materials

[Contact Us](#)



How to Ground an Electrical Panel: A Complete Guide

Learn how to ground an electrical panel step-by-step. Ensure safety, code compliance, and protect your home from electrical hazards.

[Contact Us](#)



Installing Copper Ground Wire To My Panel Box! #shorts #electrical

In this video, I show how I installed the ground wire to my panel box. Here is the full video o How To Wire A Main Electrical Panel - Star

[Contact Us](#)



Installing Copper Ground Wire To My Panel Box! #shorts #

Search "electrical conduit"
@TheExcellentLaborer Installing Copper Ground Wire To My Panel Box! #shorts #electrical 8.8K Dislike

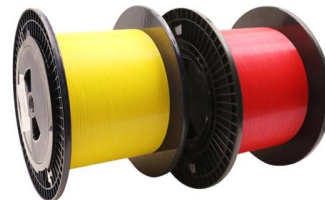
[Contact Us](#)



How to Ground a Metal Electrical Box: A Step-by-Step Guide

This guide will walk you through the process, from identifying the grounding point to connecting the ground wire. With our help, you can safely ground your metal electrical box and protect yourself from

[Contact Us](#)



The Importance of Ground Wires in the Breaker Box: A

The ground wire in a breaker box is a crucial element of an electrical system, providing safety and preventing electrical shocks. Learn more about its

[Contact Us](#)

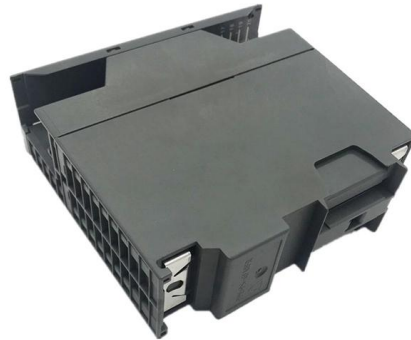




How To Ground A Circuit Breaker Box Safely: A Step-by

Examine Your Main Panel: Open the cover of your main circuit breaker box. Look for a thick, bare copper wire or a green-insulated wire. This

[Contact Us](#)



How to Install a Cable Distribution Box Safely and

Misconception: If the cable distribution box is not grounded or has poor grounding, it is easy to cause electric shock accidents when the box is

[Contact Us](#)

How do you ground a plastic electrical box

Overall, grounding a plastic distribution box is a process that requires specialized knowledge and skill. If you are not sure how to proceed, you should

[Contact Us](#)



Electrical Box Ground Wire Connectors & Connections

How to make proper & safe electrical ground wiring connections in the box: This article describes options for connecting a metal electrical box to the grounding conductor & connecting the grounding

[Contact Us](#)

Correct Connection Method Of Grounding



Generally, copper core wire is selected as the ground wire and connected to the PE wiring bar. When connecting, it is necessary to strip the wire

[Contact Us](#)



Diy electrical safety: grounding circuit breaker boxes for peace of

In a circuit breaker box, grounding involves connecting the metal enclosure to the ground, which is typically a metal rod driven into the earth. Materials Required Before beginning the

[Contact Us](#)

How to Install Ground Rods: 11 Simple Steps (with

Plan the route for the grounding electrode conductor. Once you install the ground rod, you connect it to the electrical panel inside with a copper wire

[Contact Us](#)



Contact Us

For datasheets, pricing, or custom fiber access solutions, please visit:
<https://frindel.es>