

How to connect a single-mode SEEP optical module





Overview

To connect an optical cable to an SFP module, use the appropriate patch cord (e. In this guide, you will learn what a single mode SFP transceiver is, how it works, the key specifications and types available, and where it is commonly used. Whether you are a network engineer, IT decision-maker, or simply exploring fiber optic technologies, this article will help you clearly. These transceiver modules are hot-swappable input/output (I/O) devices that plug into 100BASE, 1000BASE and 10GBASE ports (for SFP+), which connect the module port with the fiber-optic or copper network. The fiber-optic SFP+ / SFP28 modules contain a laser that is classified as a "Class 1 Laser.



How to connect a single-mode SEEP optical module



Single-mode vs Multimode SFP: What's the Difference?

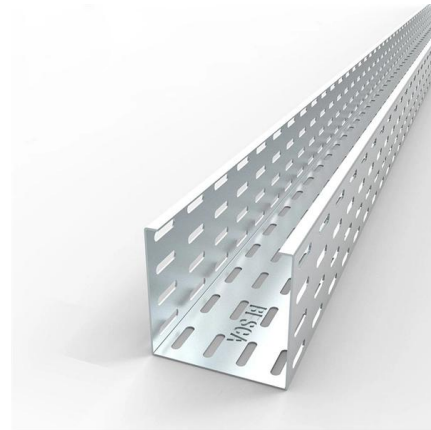
Discover the differences between single-mode and multimode SFP transceivers. Learn which one suits your network needs for optimal performance

[Contact Us](#)

Single Mode SFP Transceiver: Complete Guide Explained

In this guide, you will learn what a single mode SFP transceiver is, how it works, the key specifications and types available, and where it is commonly used.

[Contact Us](#)



QSFP-DD Optical Transceivers for High-Speed

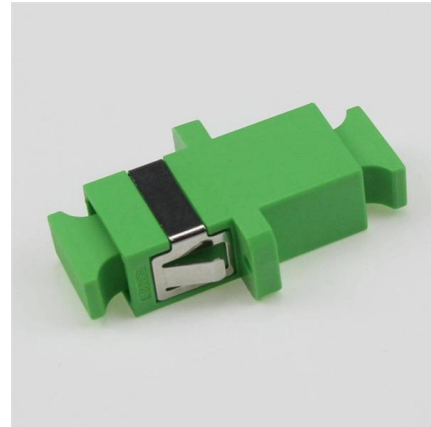
Cisco's comprehensive portfolio of QSFP-DD modules support 400G and 800G data rates across copper, multimode fiber, and single-mode fiber, and

[Contact Us](#)

SFP Optical Transceiver Modules for Long Distance: A

This guide provides a comprehensive breakdown to help network professionals, IT architects, and procurement teams make informed decisions

[Contact Us](#)



BiDi SFP Module: A Complete Guide for Fiber Networks

Learn what a BiDi SFP module is, how it works, key types, benefits, and when to use BiDi optics in fiber networks.

[Contact Us](#)



What is QSFP & QSFP+ Transceiver: An Ultimate Guide

Single Mode QSFP: The SMF type typically features an LC connector and a WDM laser, suitable for 9/125 single-mode fiber cabling, offering a

[Contact Us](#)



Types of Area Network and How Optical Modules Support Them

A small LAN may use short-range 10G or 25G optical modules for switch-to-server connectivity. A MAN typically relies on long-range single-mode optics and CWDM/DWDM technologies.

[Contact Us](#)





The Ultimate Guide to SFP Modules (2026): Types,

Confused by SFP vs SFP+? Read the definitive 2026 guide on SFP modules. We explain Single Mode vs Multimode, DDM diagnostics, and how to choose the right

[Contact Us](#)



Next-Generation Connectivity: The Rise of 800G OSFP 2*FR4 Optical

It features an integrated finned heatsink on the module body, which allows for superior heat dissipation compared to the QSFP-DD standard. This is critical for 800G modules, which often

[Contact Us](#)

3 FAQs of Connecting Switches by Fiber Optical Ports

Whether the optical modules of the two switches are single-mode or multi-mode. Whether the wavelengths of the optical modules of the two switches

[Contact Us](#)



What is SFP Port? Everything You Need to Know

What is an SFP port? The SFP port also refers to a Small Form-factor Pluggable port. It is a compact mechanical slot that accepts an SFP module

[Contact Us](#)



such/ignore.txt at main · yeerma/such · GitHub

aasdadasda. Contribute to yeerma/such development by creating an account on GitHub.

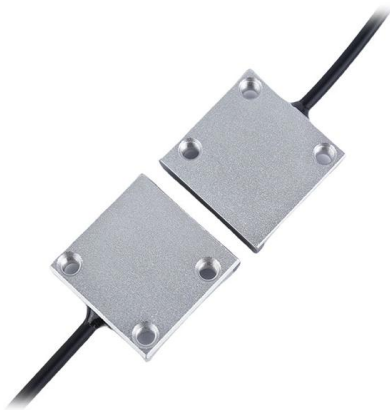
[Contact Us](#)



Introduction of 10G SFP+ Optical Modules

Scalability: They allow you to easily upgrade your network to 10 Gigabit speeds by simply swapping out the modules. Flexibility: They come in

[Contact Us](#)



How to Connect Fiber Optic Cables to SFP Modules , Weunion Guide

Align the module with the device's SFP port, ensuring TX/RX labels match the cable's direction. Gently push the module until it clicks into place (a latch will secure it).

[Contact Us](#)



How to Install or Remove SFP, SFP+, QSFP, and XFP

To connect an optical cable to an SFP module, use the appropriate patch cord (e.g., LC-LC, SC-LC, etc.). The patch cord must match the fibre type -

[Contact Us](#)





200G Optical Module Market Report: Size, Growth,

200G Optical Module Market Size And Forecast
200G Optical Module Market size was valued at USD 2.5 Billion in 2023 and is projected to reach USD 5.1 Billion

[Contact Us](#)



ABB N4BG 1KHW002238R0001/1KHW002237R0001 OPIC1 R1A

ABB N4BG 1KHW002238R0001 / OPIC1 R1A 1KHW002237R0001 is an ABB OPIC series optical fiber pilot protection interface board. It is specially designed for power system relay protection and

[Contact Us](#)



BiDi SFP: The Complete Guide to Bidirectional SFP Transceivers and

Learn everything about BiDi SFP and BiDi fiber, including working principles, 1310nm/1550nm wavelength design, single fiber advantages, wiring diagrams, and key differences

[Contact Us](#)



Fosco Connect QSFP-4002-IR4 QSFP+ 40G IR4 optical module, single-mode

Product description The QSFP-4002-IR4 is a short range single-mode 40G QSFP+ optical module compatible with the 40GBase-IR4 specifications. It uses 4 CWDM 10G lasers running 1271~1331nm

[Contact Us](#)



Optical module - A comprehensive exploration

The optical module is one of the core devices of the optical communication system, and its development has a vital impact on its related

[Contact Us](#)



SFP Optical Transceiver , SFP Optical Module , Perle

Perle SFP Optical Transceivers are hot-swappable, compact media connectors that provide instant fiber connectivity for your networking gear. They are a cost

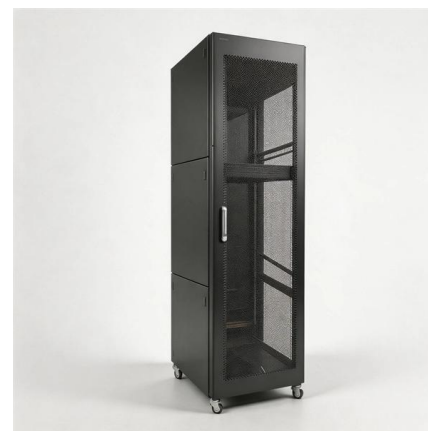
[Contact Us](#)



Top Optical Modules for POTN Deployment: SFP, QSFP, and OSFP

Connector interface: LC duplex, MPO, or MTP, depending on whether the fiber is single-mode or multi-mode. Power and thermal envelope: The heat generated by high-speed optics affects

[Contact Us](#)



Why Large AI Clusters Need Optical Shuffle Architecture for

Optical Shuffle architecture is gradually becoming a crucial network foundation for building ultra-large-scale AI GPU clusters. Its underlying key lies in Fiber Shuffle capability.

[Contact Us](#)





Lumentum

Lumentum Holdings Inc. ("Lumentum"), a global leader in photonic solutions, today announced its showcase of technology and product demonstrations designed to meet the

[Contact Us](#)



Cisco SFP and SFP+ Transceiver Module Installation

These transceiver modules are hot-swappable input/output (I/O) devices that plug into 100BASE, 1000BASE and 10GBASE ports (for SFP+),

[Contact Us](#)



Next-Generation Connectivity: The Rise of 800G OSFP 2*FR4 Optical

At its core, an 800G OSFP 2*FR4 transceiver is a hot-pluggable optical module designed for 800 Gigabit Ethernet links. Unlike traditional single-channel modules, the "2*FR4" designation

[Contact Us](#)



interface	SFP+	rate	10Gbps
Line length	1-100m	Wave diameter	850nm

AshwinD24's gists · GitHub

GitHub Gist: star and fork AshwinD24's gists by creating an account on GitHub.

[Contact Us](#)





201845_PluggableModulesInstall_RevG

These installation instructions provide overview and specification information for small form-factor pluggable (SFP/ SFP+/SFP28) modules, as well as instructions for installing and removing the modules.

[Contact Us](#)



5-INCH COLOR TOUCHSCREEN

Intuitive operation, easily accessible with just one touch



QSFP-DD Optical Transceivers for High-Speed Connections

Double existing 400GE port bandwidth with 2x400G-FR4 and 8x100G-FR modules across single-mode fiber links up to 2 km. QSFP-DD800 modules enable higher radix for next-generation network

[Contact Us](#)

Contact Us

For datasheets, pricing, or custom fiber access solutions, please visit:
<https://frindel.es>