

How to calculate the total traffic of the core switch





Overview

Use this Switching Capacity Calculator of Networking Switches to quickly determine the total throughput of your network switch, including full-duplex performance. It's defined as the maximal forwarding speed without loss of packets, typically measured in the form of packets each second (PPS/FPS) or bytes per second (bit/s Mbit/s, Gbit/s). Calculating the throughput of a network switch is essential for understanding its performance capabilities and ensuring that it meets the demands of your network environment. NetFlow Analyzer is switch traffic monitoring software that monitors interface-level bandwidth usage and provides traffic trend reports for a custom period. As a flow-based monitoring tool, it supports NetFlow primarily along with other flow technologies like sFlow, JFlow, IPFIX, and NetStream to.



How to calculate the total traffic of the core switch



Network Switch Performance Calculators , Indra Heera Group:This

These calculators from Indra Heera Group help IT professionals and network engineers estimate both switching capacity and forwarding performance of their network switches, enabling high-speed,

[Contact Us](#)

How To Analyze Network Switch Performance: 7 Key Metrics

Learn how to analyze network switch performance with 7 key metrics. Compare throughput, latency, packet loss & more to choose the right switch for your needs.

[Contact Us](#)



Switching Capacity Calculator

Switching capacity refers to the maximum amount of data that a network switch can process and forward in a given amount of time, typically measured in gigabits per second (Gbps). It is a critical

[Contact Us](#)



How to calculate switch throughput/ capacity in handling data

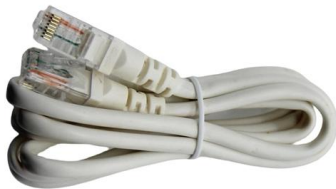
Hi Friends, I have problem in understanding Switch 2960 data throughput/capacity. How do we calculate in Mpps in show interface command. I read the switch performance sheet. It has



Switching Capacity Calculator of Networking Switches : A

In the world of networking, switching capacity is a critical metric that determines how efficiently a network switch can handle data traffic. Whether you're managing a small office network or a large enterprise

[Contact Us](#)



How are network interface metrics calculated using SNMP?

Learn how interface report data is calculated using SNMP metrics for traffic, utilization, packets, errors, and discards. Understand formulas with examples, 32-bit vs. 64-bit counters, and

[Contact Us](#)



Cisco Switch Traffic Monitoring

Access switch and core switch traffic monitoring NetFlow Analyzer offers real-time traffic insights for the access switches and core switches in your network. You can monitor how well the network

[Contact Us](#)





How to calculate the switch's backplane bandwidth?

The backplane bandwidth marks the total data exchange capability of the switch, and the unit is Gbps, also called the exchange bandwidth. The higher

[Contact Us](#)



How To Calculate The Backplane Bandwidth And Packet Forwarding

Calculation of backplane bandwidth and packet forwarding rate for switches in each layer. For a large surveillance project, the focus is the choice of switches. Here we choose a layer

[Contact Us](#)

How do you calculate the throughput of a switch?

Calculating and optimizing the throughput of a network switch involves understanding both theoretical capacities and real-world performance factors. By carefully measuring and analyzing network traffic,



[Contact Us](#)

GAIN AN IN - DEPTH UNDERSTANDING OF



- ① LED DISPLAY PANEL
- ② PROTECTOR OPERATION BUTTONS
- ③ NEUTRAL WIRE OUTPUT TERMINAL
- ④ LIVE WIRE OUTPUT TERMINAL
- ⑤ WORKING CURRENT AND VOLTAGE INSTRUCTIONS
- ⑥ FLAME - RETARDANT SHELL

Calculate Distance Between Two Cities Places Locations Addresses

Distance Calculator This tool helps in calculating mileage and distance between cities, places, locations, points, zip codes, coordinates, or addresses on map. Please enter the origin and destination

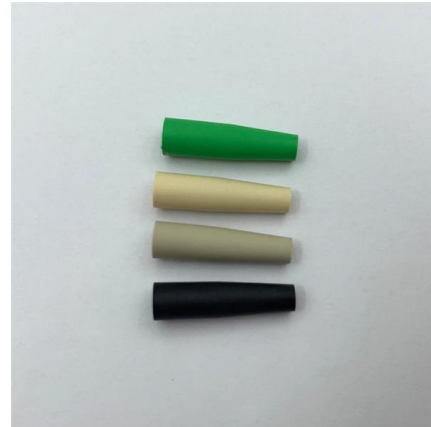
[Contact Us](#)



How to calculate throughput in your network -- The right

Get practical tips on how to calculate throughput in a network, boost performance, and keep systems efficient with actionable advice.

[Contact Us](#)



How to Calculate Network Switch Capacity?

Calculating a network switch's capacity, often referred to as its backplane bandwidth or switching fabric capacity, is crucial for determining if it can handle the anticipated network traffic

[Contact Us](#)

Traffic Analysis

Traffic also includes the relationship between call attempts on traffic-sensitive equipment and the speed with which the calls are completed. Traffic

[Contact Us](#)



How to calculate required switch speed based on network usage?

I have a 48 100Mbit/s port HP Procurve Switch 2610 (J9088A) that can handle 13.0 million PPS (packets per second) and features wire speed switching capacity at 17.6Gbps. First off, what does that

[Contact Us](#)



Switching Capacity Calculator of Networking Switches : A

Use this Switching Capacity Calculator of Networking Switches to quickly determine the total throughput of your network switch, including full-duplex performance.

[Contact Us](#)



You should understand the 6 concepts of core switches!!

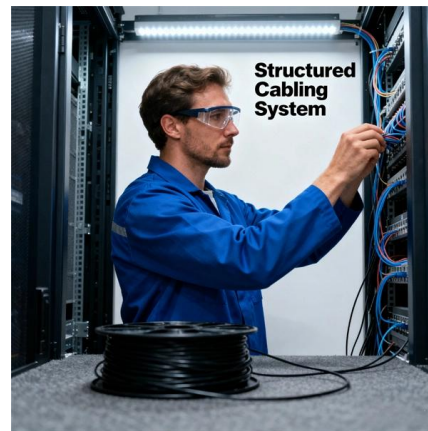
For core switches, important components should have redundancy capabilities, such as management module redundancy and power supply

[Contact Us](#)

Network Switch Calculator

Choosing the right switch involves balancing port count, speed, PoE capability, and management features. This calculator helps you determine exactly how many ports you need before you shop. The

[Contact Us](#)



How do you calculate the throughput of a switch?

Calculating the throughput of a network switch is essential for understanding its performance capabilities and ensuring that it meets the demands of your network environment. Throughput refers to the rate

[Contact Us](#)





Switching Capacity Calculator

This is a key specification for understanding whether the switch backplane can carry simultaneous traffic across many ports (note that it is

[Contact Us](#)



How calculate the total of incoming / outgoing traffic of all

I need a calculated item that sum all total traffic (In/Out) of all network interfaces on a switch and then calculate the bandwidth usage in percent to know for example 20%, 40% of my bandwidth its used.

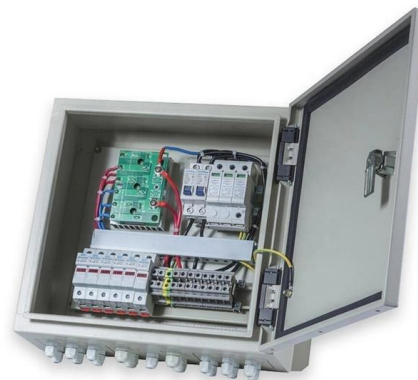
[Contact Us](#)



Traffic intensity

o Traffic intensity is a bare number, but in order to emphasize the context, one often writes as its "unit" erlang (E, erl) o A.K. Erlang (1878-1929) was the pioneer of traffic theory, which he applied to study

[Contact Us](#)



[#ZBXNEXT-4618] How calculate the total of incoming / outgoing traffic

[#ZBXNEXT-4618] How calculate the total of incoming / outgoing traffic of all interfaces of my switch to calculate which percentage is used.

[Contact Us](#)



Cisco Switch Traffic Monitoring

Our Cisco switch traffic monitoring tool makes the network performance troubleshooting process easier by helping you drill down to find the source of network slowness with interface-level traffic data for the

[Contact Us](#)



What Is a Core Switch in a Network?

Define the core switch--the central, high-speed backbone required for aggregating and routing massive volumes of enterprise network traffic.

[Contact Us](#)

Calculating Switching Capacity and traffic ratio

Is there any rule shall i follow to calculate the core's switch capacity? Another question about traffic ratio, if i have 48 desktop users equipped with 10/100/1000 NIC and all are connected to

[Contact Us](#)



How to calculate Backplane bandwidth and packet sending rate of a switch?

Step 1: Calculate the bandwidth of the switches in the aggregation layer. If there are 1000 IP cameras and 8 aggregation switches, each switch will handle a total of 500M data rate from 125

[Contact Us](#)



Switching Capacity Calculator

Switching capacity refers to the maximum aggregate throughput the switch fabric can handle, typically quoted by vendors as the sum of all ports' line

[Contact Us](#)



Switching Capacity Calculator , Calculate Switching Capacity

To calculate Switching Capacity, you need Number of Subscriber Lines (N) & Traffic Handling Capacity (TC). With our tool, you need to enter the respective value for Number of Subscriber Lines & Traffic

[Contact Us](#)

Contact Us

For datasheets, pricing, or custom fiber access solutions, please visit:
<https://frindel.es>