

# **How to Choose Cable Tray Support Materials**





## Overview

---

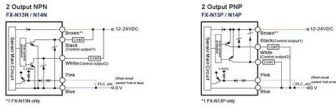
Selecting the right electrical cable tray support is vital for maintaining structural integrity, safety, and ease of maintenance. Among the various options available, rod supports and angle steel supports are two of the most commonly used types in cable tray installations. The Cable Tray ng standards, performance standards, test standards and application in this document have been tested extens ompetent professional en completely installed, without damage either to conductors or. Cable trays are essential components in modern electrical and data cable management systems.



## How to Choose Cable Tray Support Materials

---

### How to Select the Right Cable Tray for Your Project



Cable trays are integral support systems for the safe, efficient transport of electrical and communications wiring. Choosing the right cable tray can seem complex, but

[Contact Us](#)

### Comparing Electrical Cable Tray Materials- Aluminium,

Aluminium, steel, or plastic? Compare key features of electrical cable tray materials to find perfect match for your building's requirements.

[Contact Us](#)



### How to Choose the Right Cable Tray for Efficient Cable

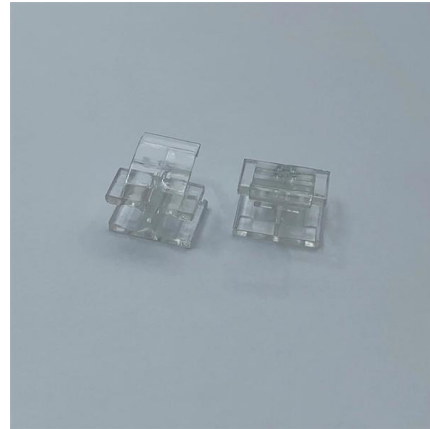
Learn how to choose the right cable tray for electrical installations. Explore different designs, materials, and fastening methods to ensure optimal

[Contact Us](#)



### How to Choose the Right Cable Tray Support for Your

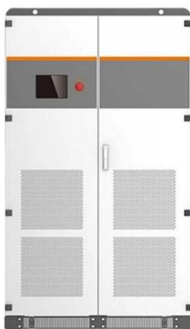
Assess Environmental Factors The environment where the cable tray will be installed significantly influences the choice of support. Indoor vs. Outdoor:



### **How to Install Cable Tray: A Comprehensive Guide to Different Cable**

Welcome to our step-by-step guide on installing cable trays! In this video, we'll explore the different types of cable trays available and provide detailed instructions for their installation.

[Contact Us](#)



### **What Is A Cable Tray? 5 Types Of Cable Trays**

A cable tray is a structural system used to support and manage electrical cables in various settings, such as industrial, commercial, and residential environments.

[Contact Us](#)



### **Cable Trays: How to Choose the Right Type for Your**

With a variety of types and materials available, it is important to carefully consider the specific needs of your installation and choose the right

[Contact Us](#)

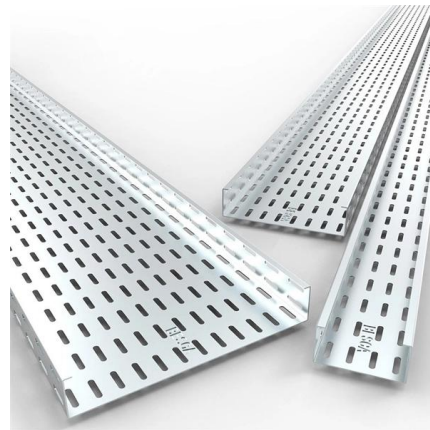




## Selecting the right materials for cable tray use at high temperatures

Selecting the right materials for cable tray use at high temperatures From the blistering heat of the Mojave Desert to the sweltering temperatures of foundries, cables need to be supported to ensure

[Contact Us](#)



## Cable Tray Technical Guide A practical guide to product selection and

In designing supports for a cable tray system, consideration should be given to the loads associated with future cable additions and any additional loading that may be applied to the cable tray system (e.g.,

[Contact Us](#)

## How to Choose the Right Cable Tray for Your Project?

Learn how to select the best cable tray for your project with insights on load capacity, corrosion resistance, customization, and common applications.

[Contact Us](#)



## Best Practice Guide to Cable Ladder and Cable Tray Systems

Cable ladder systems and cable tray systems are designed for use as supports for cables and not as enclosures giving full mechanical protection. They are not intended to be used as ladders, walk ways

[Contact Us](#)

## A Guide to Selecting Cable Trays for



## Engineering Design

Learn about the essential factors when selecting cable trays for engineering design. Understand load calculations, safety factors, material choice,

[Contact Us](#)



## Cable Tray Systems: Requirements and Best Practices

Comprehensive guide to cable tray systems requirements: tray types, materials, loading, supports, bonding, routing, and best practices for safe electrical cable management.

[Contact Us](#)

## Types of Cable Trays & Installation Guide

Explore cable tray types, materials, and installation techniques. Learn the difference between cable trays, wireways, and raceways at Cable Ties and More.

[Contact Us](#)



## Cable Tray Support: Rod vs. Angle Steel

Learn about the different types of cable tray support, including rod supports and angle steel supports, and how to choose the right one for your

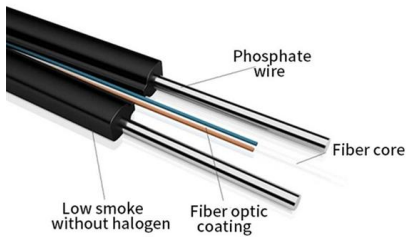
[Contact Us](#)



## 10 Things to Consider when Selecting a Cable Tray

Selecting a cable tray? Learn key factors like material, load capacity, and environment to choose the best cable management solution

[Contact Us](#)



## Cable Trays Selection Guide: Types, Features,

Cable trays are components of support systems for power and communications cables and wires. A cable tray system supports and protects both power and

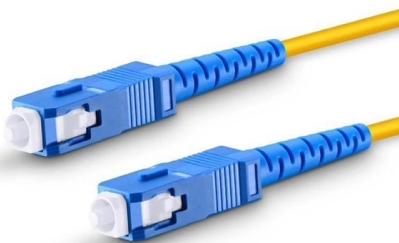
[Contact Us](#)

## Cable Trays: How to Choose the Right Type for Your

Conclusion Cable trays are an essential component of any cable management system, providing support, protection, and organization for cables.



[Contact Us](#)



## The Comprehensive Guide to Cable Tray Systems:

Master cable tray systems with our expert guide covering structural engineering, material selection, and NEC compliance to ensure safe, efficient,

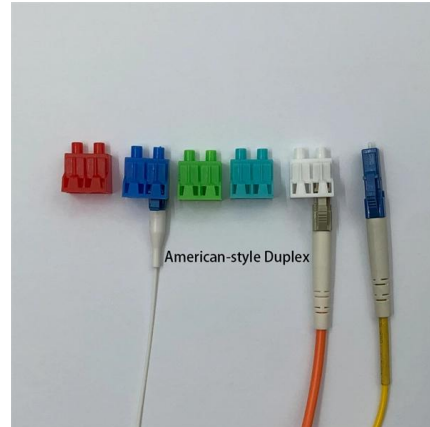
[Contact Us](#)



## Guide to cable support systems

The cable support lengths and fittings can basically be designed as cable trays, cable ladders or mesh cable trays, in which cables are routed. Fittings can, on the one hand, be used for horizontal or

[Contact Us](#)



## Best practice guide to cable ladder and cable tray

Cable ladder and cable tray systems The following recommendations are intended to be a practical guide to ensure the safe and proper installation of

[Contact Us](#)

## HOW TO CHOOSE THE RIGHT CABLE TRAY

A cable tray is a system used to support and route cables and wiring in an industrial environment. Cable trays are used in various installations, including commercial construction, data centers, computer



[Contact Us](#)



## Cable Tray Technical Guide A practical guide to product selection and

SOLID-BOTTOM CABLE TRAY Providing additional cable protection, solid-bottom cable tray is sometimes preferred to support and protect numerous small instrumentation and control cables.

[Contact Us](#)

## Ultimate Guide to Cable Tray Selection -



**Types,**

Learn how to choose the best cable tray system for your needs. Explore types, materials, installation tips, and NEC compliance in this expert guide.

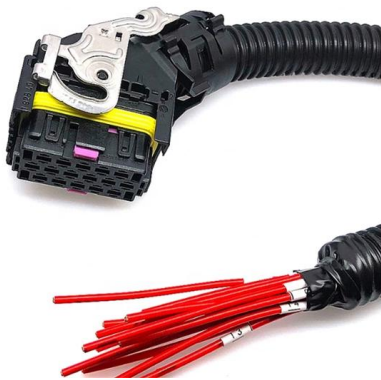
[Contact Us](#)



### Cable Tray Systems Explained: The Right Solution for

Discover cable tray systems, including tray types, sizes, duty ratings and materials, and learn how to choose the right solution for safe cable management.

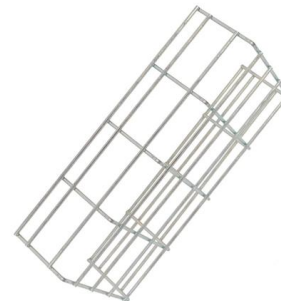
[Contact Us](#)



### Cable & Tray Selection Guide: Expert Insights

2. Cable Tray Systems: Design Considerations and Material Options Cable tray systems provide organized and secure routing for power and data cables in

[Contact Us](#)



### CABLE TRAY SYSTEMS GUIDE

The Ladder Tray features light, rugged, tubular steel construction. It is designed for mechanical support and strain relief in long runs of cable and creates a smooth gradual bend for cable. Rail and stringer

[Contact Us](#)





## Contact Us

---

For datasheets, pricing, or custom fiber access solutions, please visit:  
<https://frindel.es>