

How thick should the fire-retardant paint be for fireproof cable trays



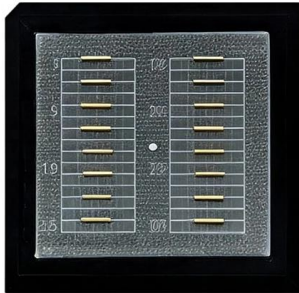


Overview

(2) Type H is a thick coating type fire-resistant coating, also known as a fire-resistant thermal insulation coating. Every fire retardant paint has a required film thickness—measured in mils or microns—to achieve its rated fire protection. Calculate the square footage of the surface and use the manufacturer's coverage chart to determine how many gallons or liters are required. These coatings create a thick, insulating layer that protects the underlying material from reaching its critical failure temperature. ASTM E-119 measures the the time it takes for a coating to fail under extreme heat and flame. Normal painted surface burns within 5 minutes, BAUMERK ANTI-FIRE Paint extends this time for 2-3 hours du n the fire and f the rust, dirt and moisture. Fire-retardant paints minimize the spread of fire and smoke over a given surface by releasing a gas that helps dampen the flames.



How thick should the fire-retardant paint be for fireproof cable tray



Intumescent Paint Vs. Fire-Retardant Paint

Cost: Intumescent paint is typically more costly than fire-retardant because it's a specialized application requiring extra labour, materials, and fire

[Contact Us](#)

Everything you need to know about fire retardant paint

How does fire retardant paint work? Intumescent fire retardant paint is the most commonly used type, and there are good reasons for its popularity. It's

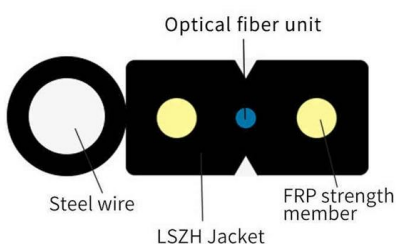
[Contact Us](#)



Technical Data Sheet ANTI-FIRE

Application Areas Interior wall, wood and steel in buildings. High risk of fire areas such as hospital, school, airports.

[Contact Us](#)



What are the different types of fireproof coatings?

Types like intumescent coatings, cementitious coatings, ceramic coatings, and fire retardant paints provide varying levels of fire resistance and are



Fire Retardant Coatings: Answers to Your Burning

Fire retardant materials act through one or more mechanisms to reduce flame propagation in coatings. These mechanisms act on the sides of the

[Contact Us](#)



HOW TO USE FIRE RETARDANT PAINT AND

Intumescent Paints work differently to fire retardant paint; instead of releasing the afore mentioned gas they char and swell up when exposed to fire. This has the

[Contact Us](#)



Fire-Resistant Paint: When and How To Use It

Take a comprehensive look at when and how to use fire-resistant paint to ensure the buildings you work on are safe, compliant, and ready for

[Contact Us](#)





cs-178-project/imdb.vocab at main · apmalani/cs-178-project

Contribute to apmalani/cs-178-project development by creating an account on GitHub.

[Contact Us](#)



Common Questions before Applying a Fire-Resistant

Always follow the manufacturer's guidelines when it comes to applying fire-resistant coatings and intumescent paint. Before starting work on a building project, you

[Contact Us](#)

Why Use Fire Retardant Paint?

Fire safety is a continuous effort, and with fire retardant paint as part of your strategy, you're taking a proactive step toward a safer future for all. International Fireproof Technology

[Contact Us](#)



When Should I Use Fire-Retardant Paint

Fire-retardant paint is normally designed for use on steel, wood, and other non-plastic flammable building materials.

[Contact Us](#)





Fire Retardant Paint Guide , Fire Retardant Coating & Fire Proofing Paint

It depends on how good the fire retardant paint's how thick you apply it and the weather it is exposed to. If you put the fire paint on correctly and take care of it it will work for many years.

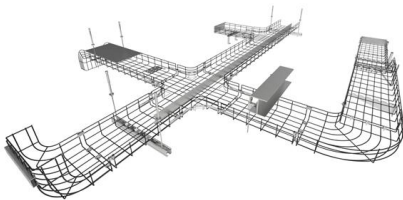
[Contact Us](#)



HOW TO USE FIRE RETARDANT PAINT AND

Once rubbed down and prepared, now apply 3 coats of Timbercoat Intumescent Paint or 3 coats of clear Intumescent Varnish (or similar products, following

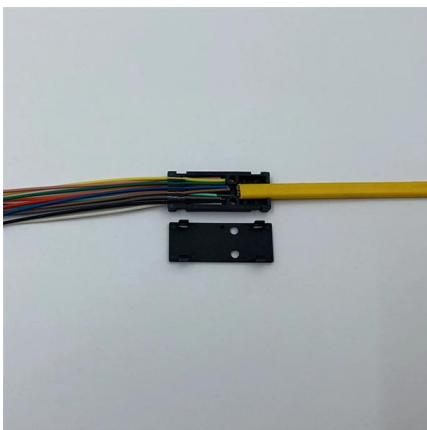
[Contact Us](#)



How Fireproof Spray Paint Works and When to Use It

Multiple thin coats are superior to one heavy coat, as thick layers can be prone to peeling or cracking, which would compromise the intumescent reaction. Adherence to the manufacturer's specified dry

[Contact Us](#)



How to use Fire Retardant Paint?

Film thickness changes depending on the product and the fire rating you need. If you want longer protection, you'll need to put on thicker coatings, usually in a few layers. Temperature and

[Contact Us](#)



Fireproofing Materials for Steel, Concrete, and Wood

Fireproofing steel beams and structural steel
There are several methods that can be used to fireproof steel beams and structural steel. One

[Contact Us](#)



Do Fire-Retardant Products Last Forever?

In some cases, fire-retardant products can't be re-treated and must be replaced entirely: After Fire Damage: Products exposed to fire should be

[Contact Us](#)

How does fire retardant paint work?

How long does fire retardant paint last? The fire-resistant capabilities of a given material can be rated from 30 minutes to 60 minutes, depending on the

[Contact Us](#)



Best Fire Resistant & Fire Retardant Paint in 2025

In this article, we'll cover everything you need to know about fire resistant and fire retardant paints, recommend the best fire resistant paints, and

[Contact Us](#)



Fireproofing

Spray gypsum -based plaster fireproofing being installed. Circuit integrity fireproofing of cable trays, using calcium silicate boards. Damaged spray fireproofing

[Contact Us](#)



Everything you need to know about fire retardant paint

Other fire retardant paints use different methods, such as releasing flame-dampening gases, to prevent flame spread. Once the gases run out, the

[Contact Us](#)

What Is Fire Retardant Paint?

Additionally, intumescent paints are generally easier to apply than traditional water-based paints due to their thick consistency-perfect for surfaces

[Contact Us](#)



How To Properly Apply Fire Retardant Paint

Every fire retardant paint has a required film thickness--measured in mils or microns--to achieve its rated fire protection. Calculate the square footage of the surface and use the

[Contact Us](#)



How to Use Fire Retardant Paint and Intumescent Paint

We are experts in specifying fire retardant and resistant paints and fire stopping products and door intumescent upgrades and are happy to provide free

[Contact Us](#)



Fire Retardant Paint: Everything You Need to Know

Also known as fire-resistant, intumescent paint is another type of fireproof coating, that works in a slightly different way to fire-retardant paint. When a surface coated with intumescent paint

[Contact Us](#)



Fire-resistant Paint Mil Gauge and Coating Thickness

Fire-resistant coatings are mainly used on the surface of flammable materials to improve the fire resistance of the material. The coating thickness can

[Contact Us](#)



How to Make Wood Fireproof

Fire Retardant Paints While fire resistant coatings, like intumescent paint, create a barrier that protects the wood itself, fire-retardant paints contain

[Contact Us](#)





Fire Retardant Paint: Working, Types, and Installation Guidelines

Product Type & Usage Instructions: Fireproof paints have different types and usage methods. They have three product types depending on the substrate, fire resistance, and application.

[Contact Us](#)



3 Best Practices When Applying Fire Retardant Paint

Experts can ensure the paint performs as intended by following these best practices when applying fire retardant paint. Remember, safety should

[Contact Us](#)

Contact Us

For datasheets, pricing, or custom fiber access solutions, please visit:
<https://frindel.es>