

How much should the ground cable tray be raised



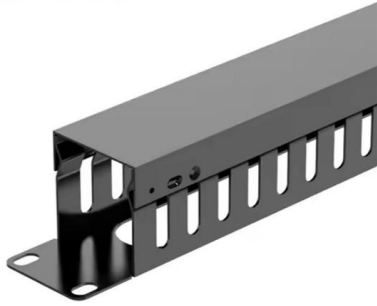


Overview

To maintain compliance and optimize system performance, best practice recommendations suggest keeping cable trays at 50% capacity or less. This approach not only supports proper airflow and cooling but also allows room for future expansion without compromising safety or efficiency. It involves connecting cable trays to the facility's grounding system, providing a low-impedance path for fault currents and protecting personnel. The metal in cable trays may be used as the EGC as per the limitations of table 392. maintain spacing or to keep cables in place when the tray is ect the minimum bend ra-dius for cables as they exit the bottom of the cable tray.



How much should the ground cable tray be raised



Indoor Grounding of Data Centers to IEC30129 and TIA607-E Standards

Abstract--The indoor grounding system at a data center has been an evolving discipline from its inception in the early days where almost all data centers had a raised floor construction. Today

[Contact Us](#)

faker/internet.go at master · pioz/faker · GitHub

Random fake data and struct generator for Go. Contribute to pioz/faker development by creating an account on GitHub.

[Contact Us](#)



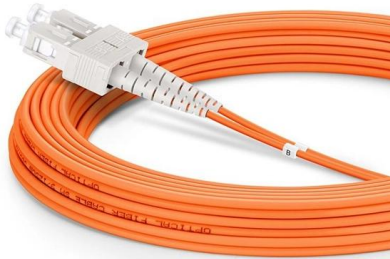
Cable Tray Grounding Wire: What You Need to Know

Discover the best practices for Cable Tray Grounding Wire installation. Learn key requirements, safety tips, and material choices to ensure a

[Contact Us](#)

Grounding cable trays: requirements, norms, instructions

In order to commission cable routes, it is necessary to take various measures to improve the safety of equipment. One of these measures is the grounding of cable trays. This process must be given



Understanding Cable Tray Grounding: A Comprehensive Guide

This comprehensive guide delves into the complexities of cable tray grounding, offering in-depth insights into its importance, principles, design considerations, installation best practices, and

[Contact Us](#)

Cable Tray Technical Guide A practical guide to product selection and

The choice of method should be discussed with a local inspector. The best decision may be to extend only the cables, creating a discontinuity in the cable tray.

[Contact Us](#)



Cable Tray Grounding: Power, Instrumentation, and Telecommunications

Where cable tray systems contain only signal and communication circuits that operate at low energy levels, power grounding per NEC Section 318-7 is not appropriate, but cable tray grounding for

[Contact Us](#)



Cable Tray Installation and Cable Handling Method

Ensure that all cable tray systems are bonded together with bonding jumpers. Ground cable trays at least every 15 m (50 ft) and at both ends to maintain

[Contact Us](#)



Cable tray manual

Instead of large conduits, cable channel may be used very effectively to support cable drops from the cable tray run to the equipment or device being serviced and is ideal for cable tray runs involving a

[Contact Us](#)

CABLE

Cable ladder is more commonly used where heavier cables need to be carried, but is more expensive. Apart from the choice between solid or perforated cable tray and wire basket, as Rendell

[Contact Us](#)



cs-178-project/imdb.vocab at main · apmalani/cs-178-project

Contribute to apmalani/cs-178-project development by creating an account on GitHub.

[Contact Us](#)

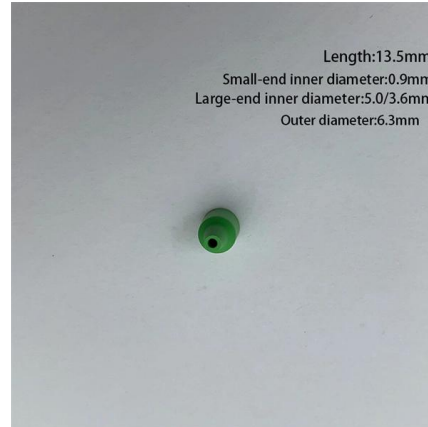




Cable tray grounding , Information by Electrical Professionals for

I was not the original designer of this detail and am by no means an expert on cable trays. The detail (see attached) calls for bonding to expansion joint or tray. I was wondering if doing

[Contact Us](#)



Cable Tray Grounding: Power, Instrumentation, and

Cable tray systems that contain signal and communication circuits should be grounded and, in some situations, shielded from external electrical and magnetic disturbances.

[Contact Us](#)

NEC Standards for Cable Trays: Grounding, Fill Capacity

This article provides a comprehensive framework that governs various aspects of cable tray installations, including the types of cables that are deemed acceptable for use, requirements for

[Contact Us](#)



Practices for grounding and bonding of cable trays

Aluminum cable trays shall not be used as equipment grounding conductors for circuits with ground-fault protection above 2000 amperes.

[Contact Us](#)



Cable Tray Technical Guide A practical guide to product selection and

SOLID-BOTTOM CABLE TRAY Providing additional cable protection, solid-bottom cable tray is sometimes preferred to support and protect numerous small instrumentation and control cables.

[Contact Us](#)



Grounding Requirements for Electrical Cables, Cable Trays, and

If the cable tray length is 30m or less, at least two connections to the main grounding conductor are required. If the length exceeds 30m, additional grounding points should be added

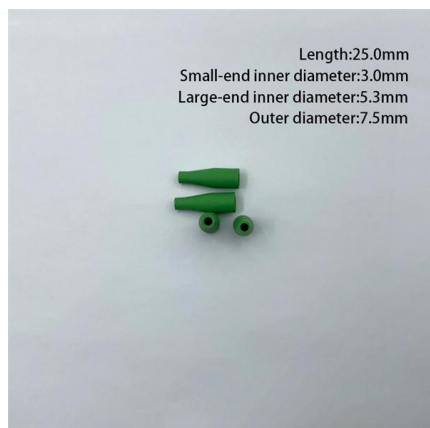
[Contact Us](#)



Cable Tray SHIB NAL

Where a cable tray includes only multiconductor cables, there is generally no need to use the tray as an equipment grounding conductor because each multiconductor cable should have integral equipment

[Contact Us](#)



Grounding Requirements for Electrical Cables, Cable Trays, and

Guidelines for grounding electrical cables, busbars, and cable trays in wiring projects, ensuring safety and compliance with industry standards.

[Contact Us](#)



Underfloor Cabling Best Practices , Winnie Industries

Modern data centers rely heavily on raised-floor cable pathways, underfloor cable management systems, and plenum-rated routing methods to

[Contact Us](#)



5 Golden Rules for Safe & Compliant Cable Tray Installation

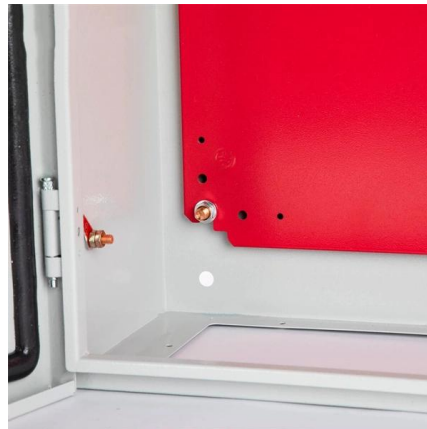
The 40-50% Rule: As a general best practice, avoid filling a tray to 100% capacity. Most standards recommend a fill ratio of 40% to 50% to allow for air circulation and heat dissipation.

[Contact Us](#)

Cable Tray Installation

4. What materials are commonly used for cable trays? Depending on the application and environment, fiberglass, aluminum, and steel (galvanized or stainless) are typically used. 5. What are the standard

[Contact Us](#)



Equipment Grounding Conductors for Cable Tray Systems

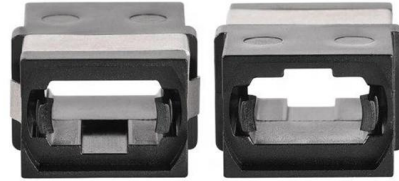
Cable tray wiring systems have excellent safety and dependability records. These excellent records are the result of cable tray's unique features plus the proper

[Contact Us](#)



Grounding Inspection of Steel and Aluminum Cable Tray Systems

Regardless of which type of equipment grounding system used, cable tray systems must be electrically continuous and effectively bonded and grounded per Section 250-75 in the NEC. The most important



[Contact Us](#)

Contact Us

For datasheets, pricing, or custom fiber access solutions, please visit:
<https://frindel.es>