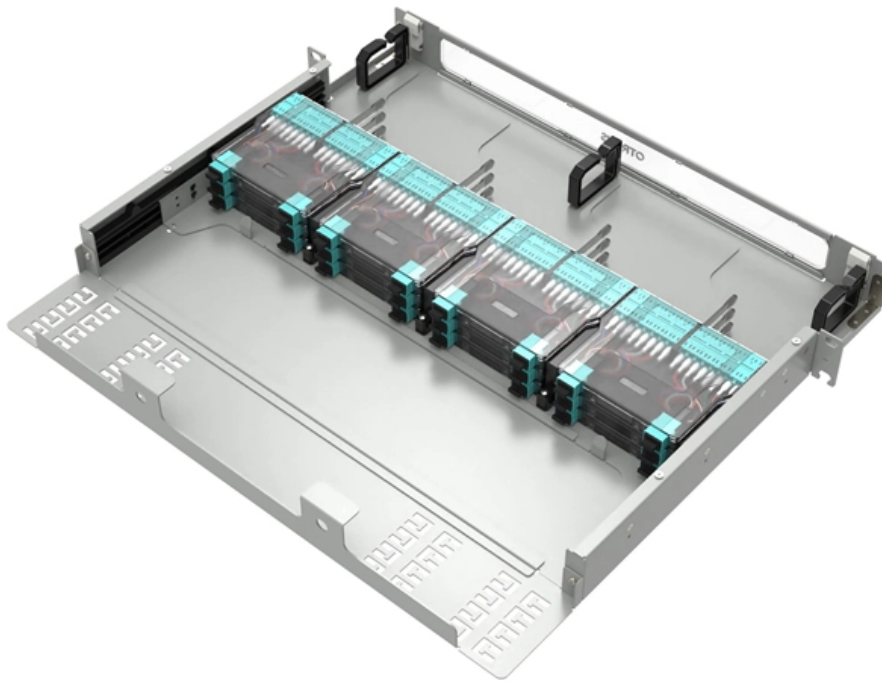


How many sections of cable tray should be sent for inspection





How many sections of cable tray should be sent for inspection



Cable Tray Systems: Requirements and Best Practices

11. Inspection, Maintenance, and Modifications
One of the advantages of cable tray systems is ease of inspection and modification, but this requires a structured maintenance approach:

[Contact Us](#)

Cable Tray Technical Guide A practical guide to product selection and

The choice of method should be discussed with a local inspector. The best decision may be to extend only the cables, creating a discontinuity in the cable tray.

[Contact Us](#)



METHOD STATEMENT FOR CABLE TRAY AND

Supports for Tray / Trunking (spacing) shall be as per standard practice and manufacturer's recommendations. o Additional support shall be

[Contact Us](#)



Inspection of Cable Trays, Installation Instructions Of Cable Tray

Cable trays can provide a safe structure for a wiring distribution system. If not designed or installed properly, wiring inside cable trays may pose hazards such as fire, electric shock and sudden blast



Inspection of Cable Trays, Installation Instructions Of Cable Tray

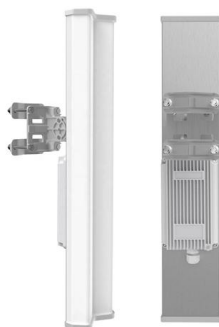
When trays, ladders & channel supports have been subjected to unusual weather patterns or any other abnormalities, it is recommended that an inspection is carried out and any remedial activity undertaken.

[Contact Us](#)

Cable Tray Inspection Checklist for Safety and Efficiency

Cable Tray Inspection - Key Technical and Structural Considerations When inspecting cable trays, several technical and structural aspects must be checked

[Contact Us](#)



Cable Tray Systems: Requirements and Best Practices

This article explains the main requirements and good practices for cable tray systems, including tray types, materials, loading, supports, bonding, cable selection, and installation details.

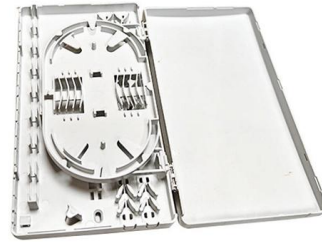
[Contact Us](#)



Cable Tray Inspection Checklist for Safety and Efficiency

Cable Tray Inspection - Key Technical and Structural Considerations When inspecting cable trays, several technical and structural aspects must be checked to ensure safety, efficiency, and

[Contact Us](#)



Cable Tray Width, Dimensions and Specifications as per

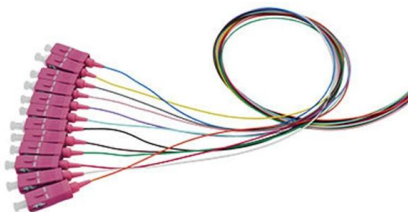
Learn about cable tray width dimensions and specifications as per NEC standards. Understand types, sizes, materials, and installation guidelines for safe and

[Contact Us](#)

Precautions for Cable Tray Installation

The overall layout of the cable tray should be short distances, economic feasibility, safe operation, and meet the requirements for construction, maintenance, and

[Contact Us](#)



A Guide to Installing and Supporting Electrical Cable Trays

A professional guide to installing electrical cable tray systems per NEC Article 392. Covers support, securing cables, and fill calculations.

[Contact Us](#)



Inspection Methods for Cable Trays: A Comprehensive

Ensure the safety and reliability of your electrical systems with our guide on inspection methods for cable trays. Learn about structural, load, fire

[Contact Us](#)



QA/QC Inspection Checklist for Cable Trays Ladders etc

QA/QC INSPECTION CHECK LIST FOR CABLE TRAYS,TRUNKING,LADDERS & ACCESSORIES The attached editable checklist format let you know about your QA/QC

[Contact Us](#)

Cable Tray Inspection Checklist , PDF

This document is a checklist for the inspection of cable trays used in a project. It includes various criteria such as the make, type, size, and thickness of the cable

[Contact Us](#)



QA/QC Inspection Checklist for Cable Trays Ladders etc

QA/QC Inspection Checklist for Cable Trays Ladders etc by HSE DOCUMENTS on September 16, 2020 in Downloads

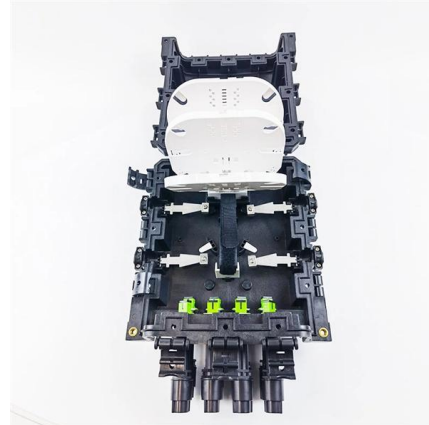
[Contact Us](#)



Cable Tray Installation Quality Assessment Guide

A well-installed cable tray ensures that cables are kept secure, organized, and protected from damage while offering easy access for

[Contact Us](#)



Inspection Test Plan for Cable Tray and Accessories Installation

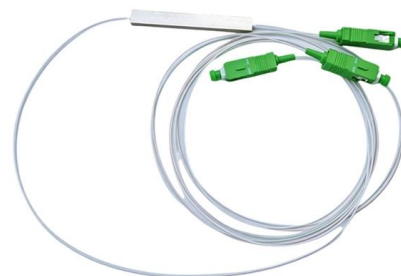
This article is about ITP (Inspection Test Plan) Plan for Cable Tray and Accessories Installation.

[Contact Us](#)

Cable Tray Technical Guide A practical guide to product selection and

SOLID-BOTTOM CABLE TRAY Providing additional cable protection, solid-bottom cable tray is sometimes preferred to support and protect numerous small instrumentation and control cables.

[Contact Us](#)



Cable Tray Questions , Cable Tray Institute

NEC section 318-5 (e) indicates that multiconductor cables rated 600 volts or less are permitted in the same cable tray, however, separation of power and control cables is necessary as indicated in other

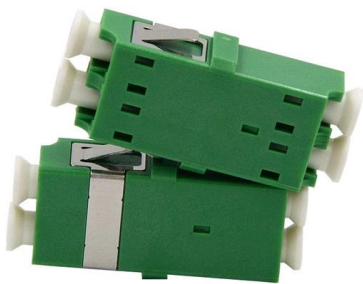
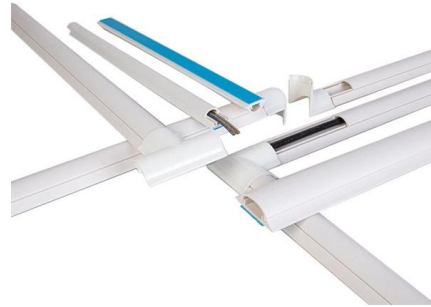
[Contact Us](#)



Inspection Test Plan for Cable Tray and Accessories Installation

This article is about ITP (Inspection Test Plan) Plan for Cable Tray and Accessories Installation. Inspection Test Plan for Cable Tray and Accessories Installation Description of inspection/test and

[Contact Us](#)



Microsoft Word

SECTION C: STORAGE All tray items whether stored outside or indoors, should be placed on sufficient support, to enable future mechanical lifting. Trays and fittings should be stacked by their physical

[Contact Us](#)

Cable tray manual

Where cable tray wiring systems with current carrying conductors are installed in a dust environment, ladder type cable trays should be used since there is less surface area for dust buildup than in

[Contact Us](#)



Cable Tray Inspection Checklist Report , PDF , Wire

The document is a field inspection report for the installation of cable trays, conduits, and trunking. It includes checklists to inspect items like cable tray sizing and

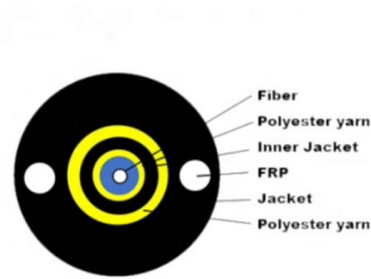
[Contact Us](#)



Avoiding Mistakes in Instrumentation Cable Tray

Learn how to avoid common mistakes in instrumentation cable tray installation. Follow IEC standards and EPC best practices for safe, reliable

[Contact Us](#)



Safely Installing, Maintaining and Inspecting Cable Trays

A generic guideline developed by the Cable Tray Institute indicates that cable trays should not be filled in excess of 40-50% of the inside area of the tray or of the tray's maximum weight based on the cable

[Contact Us](#)

Inspection Methods for Cable Trays: A Comprehensive

In this detailed guide, we'll explore the essential inspection methods for cable trays, focusing on maintaining their structural integrity, load-bearing

[Contact Us](#)



Key Steps for Regular Cable Tray Inspection Success

During cable tray inspection, inspectors should verify that the grounding wire size and connections meet NEC requirements. This includes

[Contact Us](#)



Contact Us

For datasheets, pricing, or custom fiber access solutions, please visit:
<https://frindel.es>