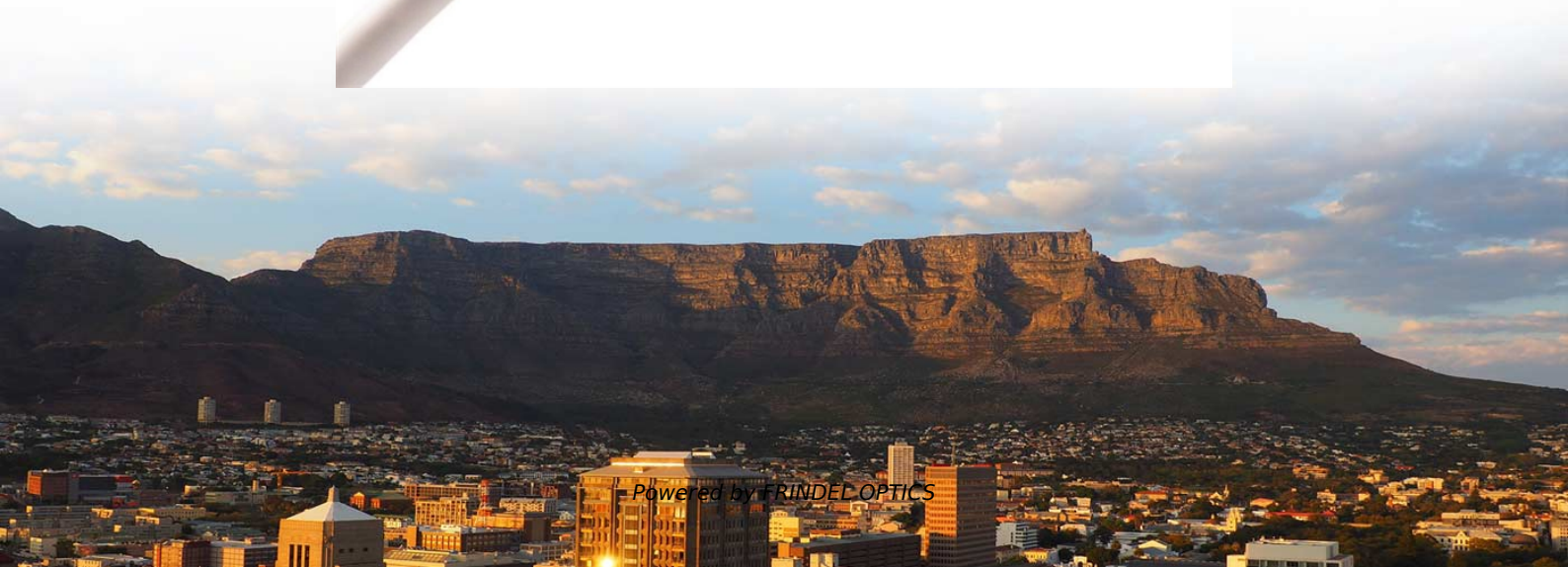
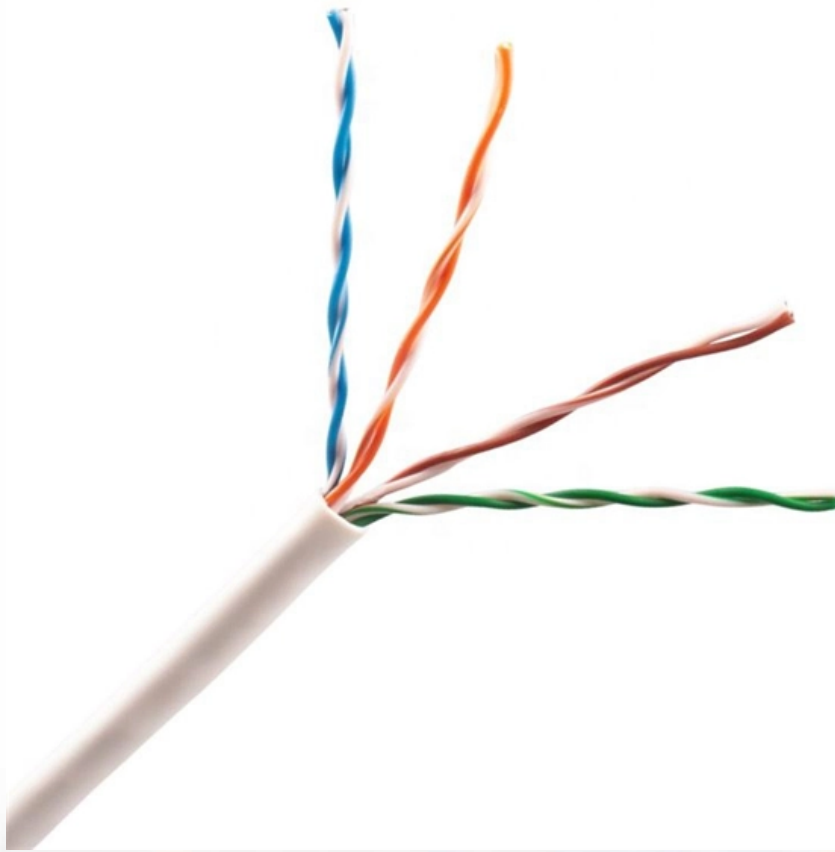


How many residual current devices RCDs should be installed in the distribution box





Overview

The regulations require RCDs to be installed on the main switchboard in accordance with the Electricity Regulations. acknowledged that the early RCD designs were Subsequent editions of the wiring rules has used by electrical utility companies as a means of increased the mandatory requirements of. An RCD 'Residual Current Device' is an electrical device that monitors the current flowing through either an individual circuit such as an RCBO 'residual current operated circuit-breaker with integral overcurrent protection' or multiple circuits within an installation using an RCCB 'residual.



How many residual current devices RCDs should be installed in the



What is the difference between MCB, MCCB, ELCB, and

Low-voltage switching devices This technical article briefly describes the most common breaker-related protection devices in low-voltage applications:

[Contact Us](#)

Residual current devices (RCDs) - what electricians

Residual current devices (RCDs) play a crucial and often underappreciated role in protecting people in their homes. InstallerELECTRIC

[Contact Us](#)



How to Choose a Home Distribution Box - Expert Guide

Learn how to choose the right home distribution box with our expert guide. Compare circuit capacity, IP ratings, breaker types & avoid common mistakes.

[Contact Us](#)

RCDs explained

These are installed in the consumer unit (fusebox) and can provide protection to individual or groups of circuits. A fixed RCD provides the highest level of

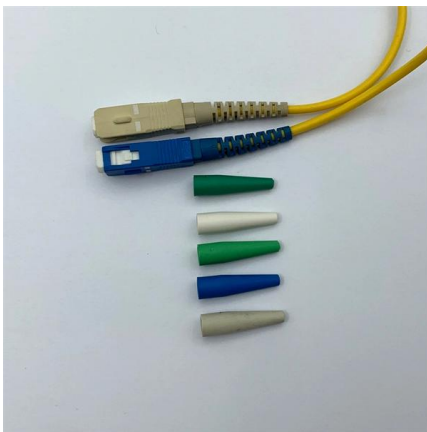
[Contact Us](#)



A complete guide to Residual Current Devices (RCDs)

An invaluable safety device in any electrical installation, our detailed guide on Residual Current Devices will cover what an RCD is, what their primary

[Contact Us](#)



Consumer Unit Replacement Cost Guide (UK Prices 2026)

Supply-Only Consumer Unit Prices If you are buying the fuse box or consumer unit separately, supply-only prices are lower than the full consumer unit replacement

[Contact Us](#)



Consumer Unit Replacement Cost Guide (UK Prices 2026)

The average consumer unit replacement cost is £525. Usually involves replacing an older fuse box with a modern consumer unit. This job will take around 1 day to

[Contact Us](#)





In-depth focus on the latest update to the IET Wiring Regulations

This is especially true when considering the suitability of protective devices to be installed, e.g. residual current devices (RCDs) such as residual current circuit breakers (RCCBs) and residual current

[Contact Us](#)



Which RCD Type?

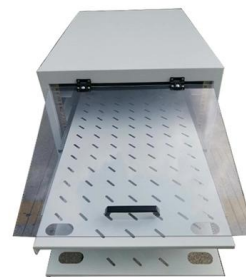
Each installation or item of equipment should be assessed for the potential of residual DC fault current and the correct type of RCD shall be selected in

[Contact Us](#)

Understanding Residual Current Devices (RCDs)

Understanding Residual Current Devices (RCDs)
Protective devices used in electrical installations, RCDs are designed to quickly break electrical circuits, thus

[Contact Us](#)



What Is a Residual Current Device (RCD) and How

In this article we will look at what a RCD is, its purpose, principle of operation and construction features. What Is a Residual Current Device? Residual current

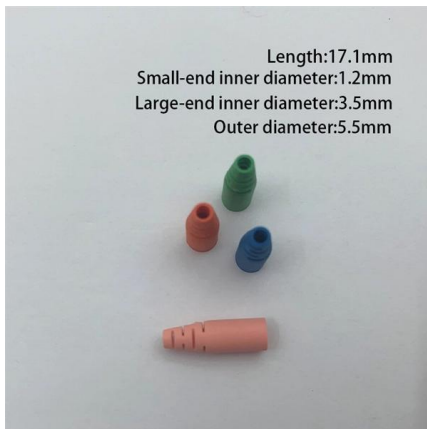
[Contact Us](#)



RCD safety switches

The regulations require RCDs to be installed on the main switchboard in accordance with the Electricity Regulations. Two is a required minimum, but more than two may be needed.

[Contact Us](#)



All About RCDs (residual current devices)

This means that the Type A or AC RCDs within the installation will not be affected and will continue to operate. However, if the EVSE does not contain an RCD-DD then the installation will

[Contact Us](#)

Which type of residual current device (RCD) to use and

Residual current breakers (RCBs), residual current circuit breakers (RCCBs) and RCDs are one and the same thing. Read more about this. Modern

[Contact Us](#)



RCDs

As a general rule, fixed and socket RCDs should be tested approximately every three months. However, portable RCDs should be tested every time that they are used.

[Contact Us](#)



What is a Residual Current Device? The Complete LED

Residual Current Devices (RCDs) are a cornerstone of modern electrical safety in homes and commercial or industrial settings. At LED Controls Ltd, we supply high

[Contact Us](#)



RCDs: Operation and Application Explained

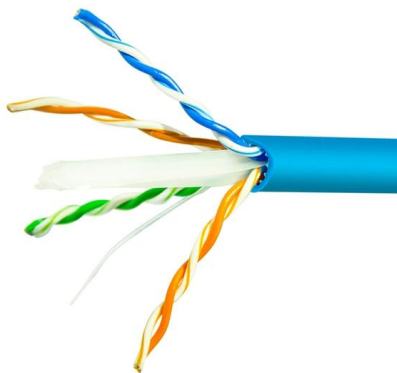
The disconnection time should not exceed 40 ms (643.8). Whilst product standard testing requires manufacturers' to subject RCDs to tests at half

[Contact Us](#)

Electricians WA (Western Australia) , RCD Test Results , Facebook

- o Measured (live test with RCD lockout enabled).
- RCD & Functional Testing
- o All installations must have 30mA RCDs (GN3, pg 96, Table 2.1.7).
- o RCD should disconnect within 30ms.
- o Live testing:
- o Set

[Contact Us](#)



Changes to RCD testing in BS 7671:2018+A2:2022

Regulation 531.3.3 of BS 7671:2018+A2:2022 states that the appropriate RCD shall be selected according to the presence of DC components and AC frequencies.

[Contact Us](#)



INSPECTION AND TESTING OF ELECTRICAL INSTALLATIONS:

'RCD' is the generic term for a device that operates when the residual current in the circuit reaches a predetermined value. The following table, Figure 1, indicates the different types of RCD available, a



[Contact Us](#)



Buy Residual Current Devices (RCD) - Modular Circuit Brakers (MCB)

Order Residual Current Devices (RCD) (Modular Circuit Brakers (MCB)) at competitive prices. Fast delivery starting from 24 hours, secure payments, and up to 2-year warranty. Made in the EU.

[Contact Us](#)

The Ultimate Guide To RCDs

Choose the Right RCD for Your Needs
Introduction to The Ultimate Guide to RCDs
Residual Current Devices (RCDs) play a vital role in protecting

[Contact Us](#)



RCDs

An RCD is a life-saving device designed to detect leakage current. In the event of detection, the device automatically disconnects the circuits being monitored. This helps to prevent

[Contact Us](#)





WHITE PAPER Residual current devices (RCDs) Protection against

AS/NZS 3000 also requires additional protection in most final sub-circuits by residual current devices to automatically disconnect the supply when an earth leakage current reaches a predetermined value.

[Contact Us](#)



REINFORCED VIRGIN PVC TRUNKING

Superior Crush Resistance



37.6MPA
Tensile Strength



2856MPA
Elastic Modulus



9.8KJ/M²
Impact Strength



1.54G/CM
Density

A Guide to RCBOs (Residual Current Circuit Breakers)

The residual current device (RCD) or residual current circuit breaker (RCCB) enables the rapid disconnection of electricity, thereby avoiding prolonged

[Contact Us](#)

Contact Us

For datasheets, pricing, or custom fiber access solutions, please visit:
<https://frindel.es>