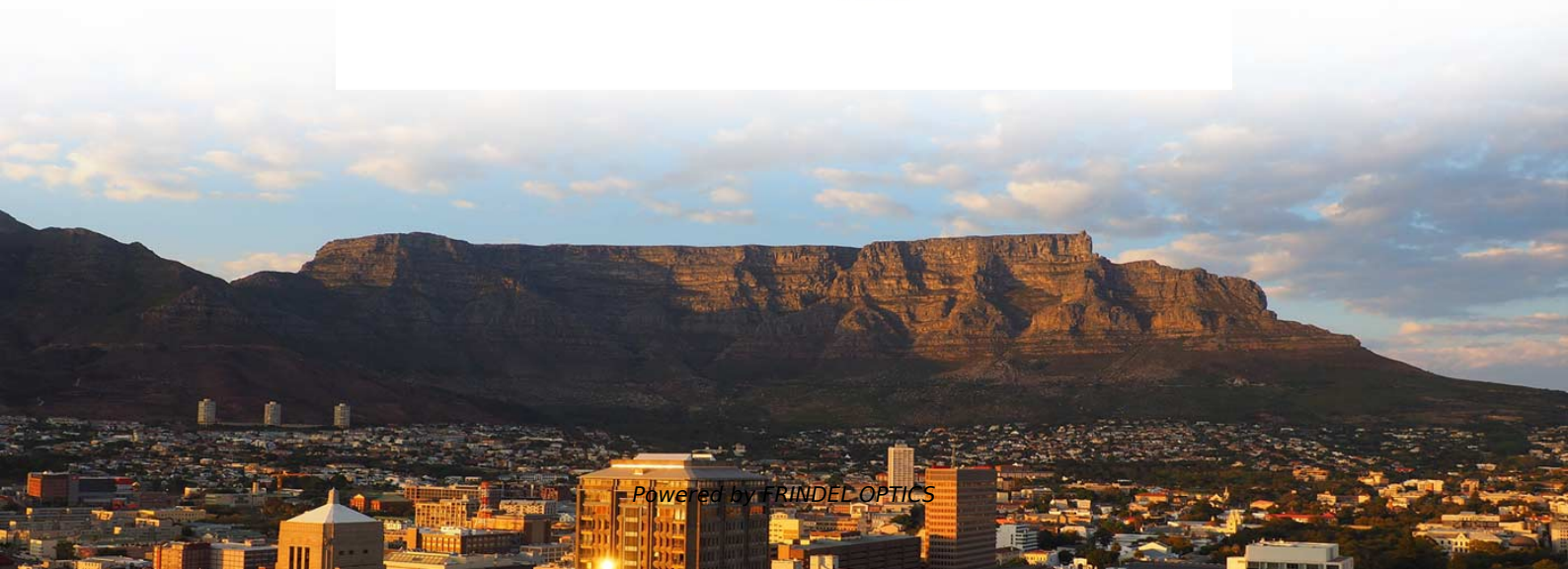


How many cores of MPO cable are needed for a 100g optical module





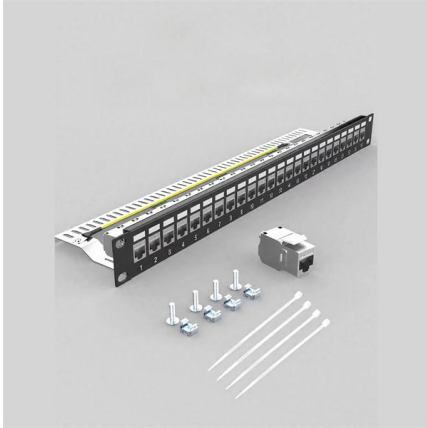
Overview

The 8-core MTP to 4-core LC duplex fibre patch cable is used to connect the 400G-DR4 optical transceiver with a 100G-DR optical transceiver. For more specific 400G connectivity solutions, please refer to FS 400G ZR/ZR+ DCI Solution. When building a 40G data center network, it's common to use 12-core MTP/MPO connectors. This architecture can handle 40Gbps transmission rates in a single fiber optic cable, making it great for environments with a lot of data and high bandwidth needs. This article explains: And a practical checklist to design MPO systems that scale cleanly. The QSFP-100G-SR4-S module supports 100GBASE-SR4 Ethernet over link lengths of up to 100m over parallel multimode fiber. 100G SR4 in a QSFP28 form-factor MPO connector, and a suitable MPO cable connector can be seen in the image below: From the image, it can be seen that there are several important points for choosing the correct MPO cable. Common 40G and 100G multimode & single-mode parallel transmission optical modules on the market include 40G-SR4/PSM4 and 100G-SR4/PSM4. After purchasing these modules, how should customers select MPO patch cords and MPO adapters for network deployment?

In practical applications, how do we manage.



How many cores of MPO cable are needed for a 100g optical module



How To Select MPO Patch Cords And MPO Adapters

Two MPO-interfaced optical modules can be connected as transceiver endpoints on the left. The modules connect to a Type A MPO adapter via one Type A and one

[Contact Us](#)

Understanding MPO and LC/UPC Optical Cables for

Discover the key differences between MPO and LC/UPC optical cables for 100G cabling. Learn about their advantages, compatibility with OM4

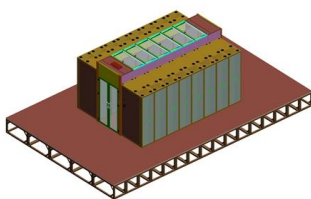
[Contact Us](#)



Panduit Cable Ordering Guide For Cisco 100G Optics

The QSFP-100G-PSM4-S module supports 100G link lengths of up to 500m over parallel G.652 SMF (Single-Mode Fiber). It accepts angle-polished MPO12 connectors and can interoperate with 4

[Contact Us](#)



A Guide Based on Core Numbers to Choose The Right MTP/MPO Cable

In addition, 8-core MTP to 4-core LC duplex cables are also commonly used for connecting 400G-DR4 and 100G-DR optical modules, supporting flexible networking among multiple



SFP vs QSFP: Which Module Does Your Switch Need? (2025 Guide)

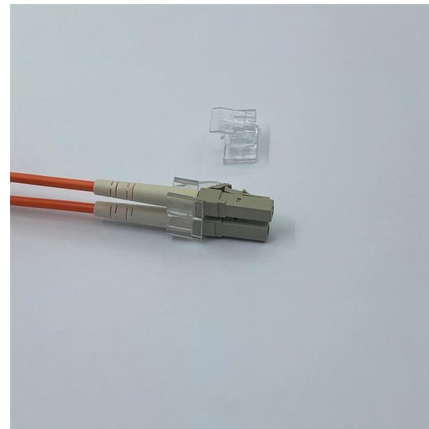
4. Cable type and reach SFP tends to use LC or short copper. QSFP often involves MPO/MTP for parallel optics at higher speeds, or breakouts to LC for 25/10G. Always confirm the reach class

[Contact Us](#)

Comparing 8, 12, 16, and 24 Fiber MPO Connectors

Compare 8, 12, 16, and 24 fiber MPO Connectors to understand differences in fiber count, compatibility, and how each type fits your network's needs.

[Contact Us](#)



Everything You Need to Know About MPO-12 Fiber

Explore a comprehensive guide to MPO-12 fiber optic cables: Their structure, applications, key selection criteria, and differences between MPO vs MTP

[Contact Us](#)



MTP®/MPO Cables Explained: Types, Applications, and

An MTP®/MPO cable is a high-density fiber optic cable that uses multi-fiber connector to transmit multiple optical signals through a single interface.

[Contact Us](#)



White Paper

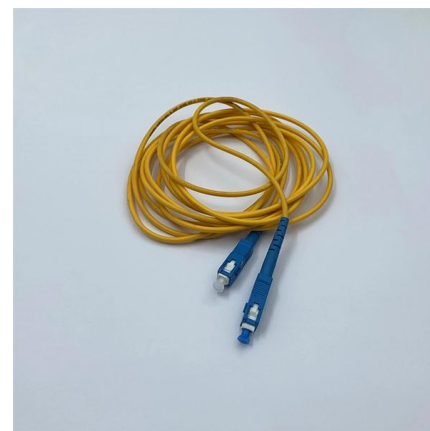
This is even more apparent in 8-fiber, parallel optical applications. A Base8 or 8-fiber cabling infrastructure actually uses 12-fiber MPO connectors to achieve 40, 100, 200, or 400 Gb/s channels.

[Contact Us](#)

A Guide Based on Core Numbers to Choose The Right MTP/MPO Cable

Among them, 8-core or 12-core MTP/MPO single-mode cables are commonly used for the direct connection of two 400G-DR4 optical modules, which is suitable for short-distance single

[Contact Us](#)



Maximizing Fiber Optic Performance: A Complete Guide

MPO connectors are a type of fiber optic connector that supports high-density, multi-fiber cables. Designed to accommodate 12, 16, 24, or even up to 72

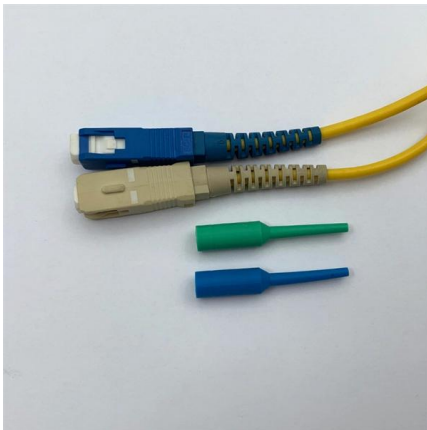
[Contact Us](#)

The Ultimate Guide to MPO Cable Types:



Explore the ultimate guide to MPO cable types, fiber optic connectors, and their applications in data centers. Understand cable features,

[Contact Us](#)



MTP/MPO Cable Selection Guide for Different Core Numbers

The 12-core MTP/MPO cables can also be used for 100G parallel to parallel connection. Through the use of MTP patch panels, network reliability is enhanced, ensuring the normal operation

[Contact Us](#)

How to Choose the Suitable Number of Fiber Cores for

When designing or upgrading your network infrastructure, one of the most important decisions you'll face is choosing the appropriate number of fiber

[Contact Us](#)



Google

Checking your browser before accessing undefined Click here if you are not automatically redirected after 5 seconds. Checking your browser - reCAPTCHA

[Contact Us](#)

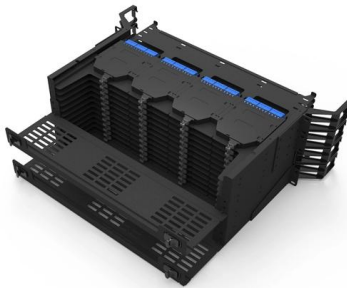




Panduit Cable Ordering Guide For Cisco 100G Optics

The QSFP-100G-SL4 module supports link lengths up to 30m over OM4 MMF with MPO-12 connectors. It primarily enabled high-bandwidth optical links over 12-fiber parallel fiber terminated with MPO

[Contact Us](#)



Pre-Terminated Trunk Cables , LC & MPO/MTP Fibre

Pre-terminated optical trunk cables are multi-fibre cable assemblies designed for quick, reliable installation in data centres and telecom infrastructure. Each trunk cable is factory-terminated with

[Contact Us](#)

MTP MPO Cable Guide: Types, Polarity & Connections

Master MTP MPO cables with our complete guide. Learn connector types, polarity (A/B/C), keying positions, and applications for 100G-400G networks.

[Contact Us](#)



MPO 12-Fiber vs 24-Fiber: density, performance & best

Why: MPO-24 reduces connector count and cabling complexity at scale, often lowering total cost-of-ownership despite higher per-connector price. Link

[Contact Us](#)



FS Community

Hier sollte eine Beschreibung angezeigt werden, diese Seite lässt dies jedoch nicht zu.

[Contact Us](#)



MPO/MTP Connectors: The Practical Guide for

Why MPO/MTP Matters for High-Speed Networks?
As data centers move from 10G/25G links to 40G, 100G, and 400G, the way we move light also changes.

[Contact Us](#)

MPO Cabling Guide: Types, Applications & How to Choose the Right

Can MPO cables be compatible with 100G/400G optical modules? Yes, as long as the core count, polarity, fiber type, and connector endface (PC/APC) all match, MPO cables can directly

[Contact Us](#)



MPO Fiber for 40G, 100G and 400G Networks

Many 100G data center links use MPO in SR4-style parallel optics, but some 100G architectures use duplex-based approaches instead. The correct answer depends on transceiver

[Contact Us](#)



MPO Connectors Explained: Fiber Counts, Polarity

Why it matters: Reduces cabling clutter, enables parallel optics (SR4, SR8, DR4), and increases density. Core counts: 12 and 24 are most common,

[Contact Us](#)



MPO Connector Basics and Best Practices , White Paper

White Paper MPO Connector Basics and Best Practices To handle higher bandwidth, improve network density, and prepare for future upgrades, more data center designers and network managers are

[Contact Us](#)

SFP vs QSFP: Which Module Does Your Switch Need? (2025 Guide)

4. Cable type and reach SFP tends to use LC plustas or short copper. QSFP often involves MPO/MTP for parallel optics at higher speeds, or breakouts to LC for 25/10G. Always confirm the reach class

[Contact Us](#)



Contact Us

For datasheets, pricing, or custom fiber access solutions, please visit:
<https://frindel.es>