

How many circuits are there in the lighting of the distribution box





Overview

The number of outgoing ways specified on an electrical panel gives you a clear indication of how many separate sub-circuits you can run off from it.



How many circuits are there in the lighting of the distribution box



Distribution Box Guide: Types, Components & Solutions

What is a Distribution Box? A distribution box, or DB box, is a circuit breaker enclosure. It is a vital part and central hub of any electrical system. The

[Contact Us](#)

Understanding Distribution Boxes: A Comprehensive Guide

A distribution box, also known as a power distribution box or electrical distribution box, is used to distribute electrical power safely to multiple

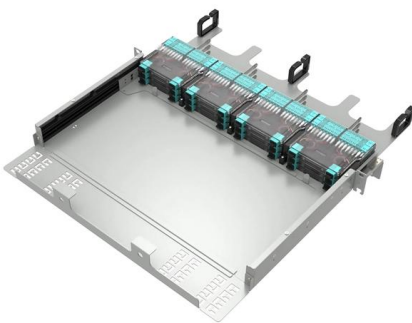
[Contact Us](#)



Distribution Box: Types and Functions , Axis-Electricals

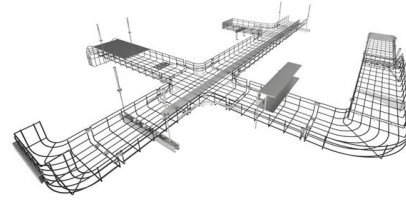
A distribution box houses all the contact breakers, earth leakage units, doorbells, and timers. The electrical power supply comes from the network to the building

[Contact Us](#)



Distribution Box: Types and Functions , Axis-Electricals

The cable is connected to the distribution board and the power is distributed through the breakers in the secondary circuits (lights and plugs). The basic structure and



How to Calculate the Size and Number of Circuits for a Distribution Box

Planning Your Circuits: More Than Just Math
You're not just calculating numbers--you're designing a system that matches how you live .
Kitchen Strategy: Avoid plugging your fridge and toaster oven

[Contact Us](#)



Distribution Boxes: Types and Functions

A distribution boxes acts as the load center and main distributor of electrical power within a building. Also called a distribution board, panel board,

[Contact Us](#)



Understanding Distribution Boxes:A Comprehensive Guide

A distribution box, also known as a distribution panel or board, is a cabinet that holds electrical parts used to supply power to multiple circuits within

[Contact Us](#)



Distribution switchboards



The distribution switchboard includes an incoming functional unit and one or more functional units for outgoing circuits, depending on the operating requirements of the installation

[Contact Us](#)



How to Calculate the Size and Number of Circuits for a Distribution

Okay, let's talk distribution boxes. You know that metal cabinet packed with switches and wires you see in basements? Yeah, that's the heart of your electrical system. Getting its sizing right isn't just about

[Contact Us](#)

Circuit Breaker Distribution Panel

Since we get so many questions on this topic, we feel a blog post dedicated to your circuit breaker distribution panel might be helpful. Your home's

[Contact Us](#)



cs-178-project/imdb.vocab at main · apmalani/cs-178-project

Contribute to apmalani/cs-178-project development by creating an account on GitHub.

[Contact Us](#)



Explanation of different domestic electric lighting wirings

Whilst this system is rarely used now, it is much less complicated for the consumer to connect new light fittings. Examples of the wiring found at ceiling roses on radial/junction-box installations are given on

[Contact Us](#)



How Many Circuits Do You Really Need? The Simple NEC Answer

The Unseen Network: How Your Home's Electrical Panel and Circuits Keep You Safe Your home's electrical system is like a finely tuned machine, and at its very core lies the Electrical

[Contact Us](#)

What Is A Distribution Board and How Does It Work? , TOSUNlux

Do you wonder how electric power is distributed in different parts of your home? Well, a distribution board or distribution box helps to do that! As the name goes, it is the load center and

[Contact Us](#)



House Wiring Circuits (UK) - Ring, Lighting & Appliance

Ring Circuit Lighting Single Ring Circuit Below is shown a basic ring circuit for a UK House . The circuit is provided with a 32 A fuse /MCB in the consumer unit. There

[Contact Us](#)



Understanding domestic electric lighting circuits (UK)

Two wiring methods There are two basic methods of wiring lights - by ceiling rose and by junction box. Systems using the ceiling roses make all the connections at

[Contact Us](#)



Distribution Boards

Distribution boards, often referred to as electrical panels or breaker boxes, serve as the nerve center of any electrical system. Here we explore the crucial parts of a distribution board and gain insights into

[Contact Us](#)

Nasdaq: Stock Market, Data Updates, Reports & News

Get the latest stock market news, stock information & quotes, data analysis reports, as well as a general overview of the market landscape from Nasdaq.

[Contact Us](#)



The Essential Guide to Understanding Electrical

3. Follow the power flow: Electrical distribution system diagrams illustrate how power flows from the source to various loads or devices. Typically, the power flows from

[Contact Us](#)



Distribution board

Instead of just circuit breakers, the rack has a solid state electronic dimmer with its own circuit breaker for each stage circuit. This is known as a dimmer-per-circuit arrangement.

[Contact Us](#)



A Definitive Guide To Distribution Boxes

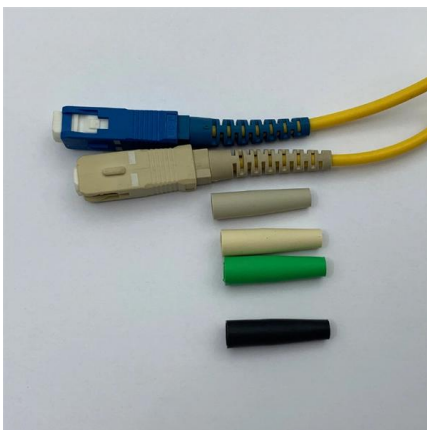
Power distribution boxes are beneficial because they eliminate the requirement for each output device to be connected directly to the power source. As a result, there's no reason to utilize

[Contact Us](#)

What is an Electrical Distribution Box? A

It's where power from the main supply splits into different circuits that feed lights, appliances, and equipment throughout the building. Think of it like a

[Contact Us](#)



Distribution Boxes: Types and Functions

From there, the power is distributed through the breakers to secondary circuits such as lighting and power outlets. Essentially, the distribution

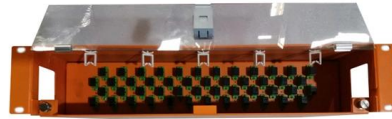
[Contact Us](#)



ELECTRICAL DISTRIBUTION CIRCUITS , TYPES OF

For the distribution of electricity from the consumer control unit to other points in an ordinary building, the supply is divided into the following three separate Types of

[Contact Us](#)



Residential electrical installation

National standards commonly recommend the subdivision of circuits according to the number of utilization categories in the installation concerned (see Figure Q10): At least one lighting

[Contact Us](#)

Contact Us

For datasheets, pricing, or custom fiber access solutions, please visit:
<https://frindel.es>